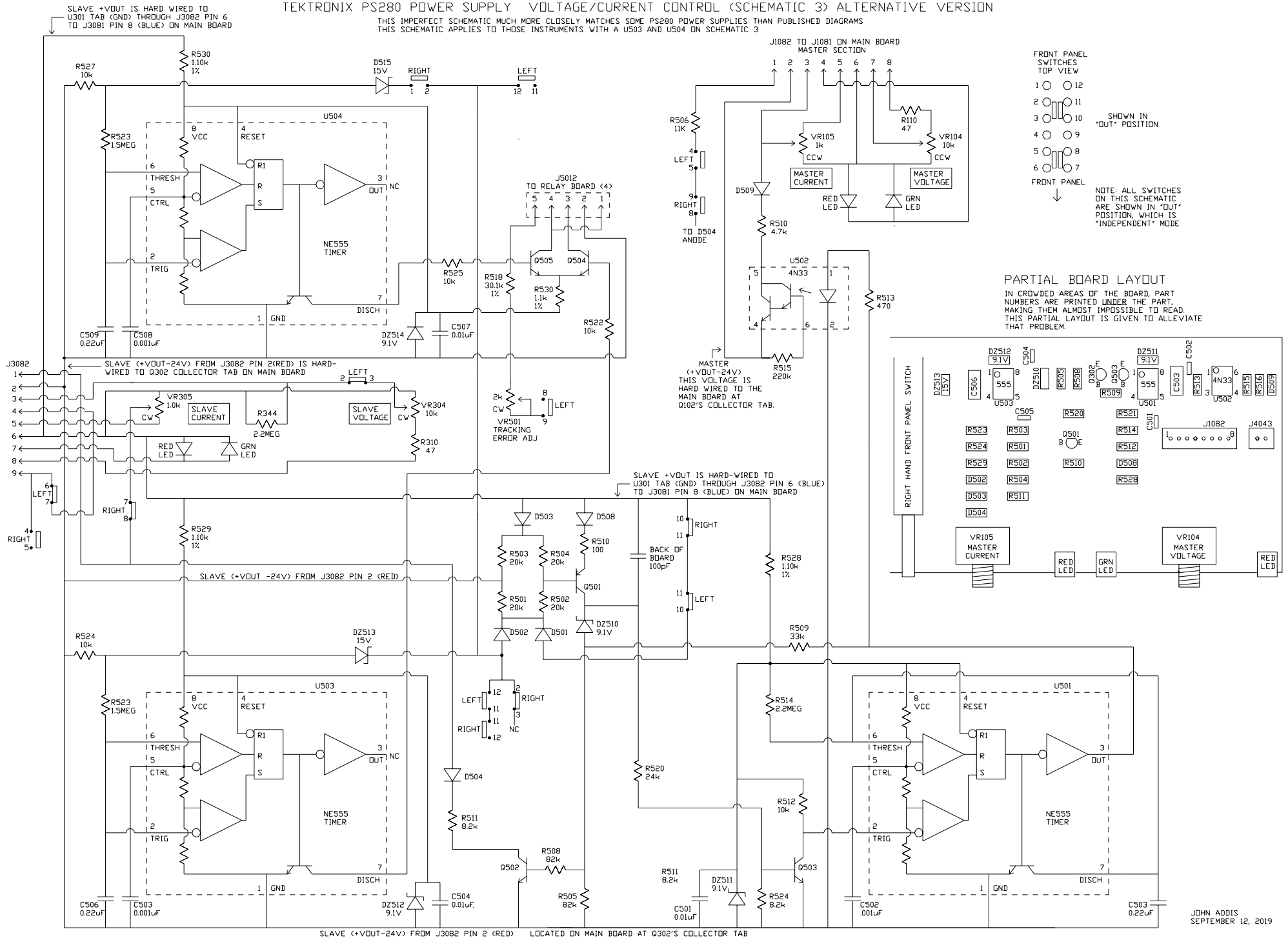


TEKTRONIX PS280 POWER SUPPLY VOLTAGE/CURRENT CONTROL (SCHEMATIC 3) ALTERNATIVE VERSION

THIS IMPERFECT SCHEMATIC MUCH MORE CLOSELY MATCHES SOME PS280 POWER SUPPLIES THAN PUBLISHED DIAGRAMS
THIS SCHEMATIC APPLIES TO THOSE INSTRUMENTS WITH A U503 AND U504 ON SCHEMATIC 3



FRONT PANEL SWITCHES TOP VIEW

- 1 ○ 12
- 2 ○ 11
- 3 ○ 10
- 4 ○ 9
- 5 ○ 8
- 6 ○ 7

SHOWN IN 'OUT' POSITION

NOTE: ALL SWITCHES ON THIS SCHEMATIC ARE SHOWN IN 'OUT' POSITION, WHICH IS 'INDEPENDENT' MODE

PARTIAL BOARD LAYOUT

IN CROWDED AREAS OF THE BOARD, PART NUMBERS ARE PRINTED UNDER THE PART, MAKING THEM ALMOST IMPOSSIBLE TO READ. THIS PARTIAL LAYOUT IS GIVEN TO ALLEVIATE THAT PROBLEM.