

Yipes! Stripes!

Tek Roadways Get A Paint Job

Now that the weather is a warmer and drier, Merle Smith (Plant Maintenance manager) reported, striping of Tek industrial park streets has begun. Loose sand had to be cleaned off roads before operations began, he added.

The work is being contracted to an experienced road striping company. Cost will be very low.

They will stripe Knowlton road, Karl Braun drive and Millikan way to the west barrier near the General Electric warehouse.

The paint that will be used is a special road striping paint. "We have chosen yellow," Merle said, "because we have found by experience that it is more durable than white. A broken center stripe will distinguish Tek roads from the roads in the surrounding area. We will get a good reflection from the stripe by adding beads to the paint. This is a much-needed advantage during foggy or rainy weather."

Present plans call for center striping only. Eventually, the crosswalks, islands and curbs (if it is deemed necessary) will be striped.



FIELD EMISSION CO. supervisors from McMinnville listen to Jim Morrow (F & M Manufacturing Engineering) explain the construction of an injection molding die. FEMCO men toured Tektronix January 15.

Tekweek

Tektronix, Inc., Beaverton, Oregon
Vol. 3, No. 43 January 25, 1963

F&M's Manufacturing Engineering Designs and Builds Safety Nozzle



DOROTHY FORNSHELL (Precision Mechanical Assembly) uses air nozzle adaptor to blow lint from C-12 camera case.

An air nozzle adaptor, developed by F & M's Manufacturing Engineering, is finding widespread use throughout the company as an effective safety tool. In operation, it reduces air pressure at the nozzle outlet and at the same time increases the amount of air for such applications as blowing debris from workbenches, tools and equipment.

The new adaptor was developed to comply with State Industrial Accident Commission requirements. The Commission had suggested that line pressures be reduced to 40 pounds per square inch. Since higher pressures were required in some applications, the Commission then suggested regulators where high pressure air was not required. This was expensive and led to the development of the adaptor. Air regulators cost about \$30 per installation—the new adaptors can be made for about \$1.50 each.

To date, more than 300 air nozzle adaptors have been requested. The adaptors are available by calling Al Spegel of the Manufacturing Engineering tool crib, extension 594.

Auto Skid Takes Life Of Panelcraft Employee

Panelcraft employee Larry Bird, 20, died Thursday in an automobile accident in Prosser, Washington. His younger brother, Donald, was critically injured when the foreign sports car Larry was driving skidded on ice and overturned.

Larry came to Tektronix in July 1961 and worked in the Panel Unit until September 1962 when he took an educational leave of absence to attend Columbia Basin junior college.

He is survived by his brother, Donald, and parents, Mr. and Mrs. Paul Bird of Grandview, Washington.

Movie Discount Offered

Paramount theatre is offering a discount to Tektronix employees for two showings of "The Longest Day," Darryl F. Zanuck's movie of the Normandy D-Day invasion.

Discount admission is \$2 (regular price \$2.50) for the February 3, 2 p.m. show or the February 6, 8:30 p.m. show. Discount blanks are available now at area receptionists' desks.

A "dine out" coupon book for \$2 is also available from receptionists.

'63 Credit Union Officers Elected At Annual Meet

At the annual Tektronix Employees Federal Credit Union business meeting Sunday, Helen Thome (CRT Production Engineering), Dick Schmidt (Advertising) and Ted Shaver (IM Planning) were elected to three-year terms as members of the board of directors.

Norm Brown (Plant 1 Assembly GM), nominated from the floor during the meeting, was elected to a two-year post as board member.

Approximately 50 Credit Union members were present to hear a report that the Credit Union had grown from \$1.7 million in 1961 to \$2.3 million in 1962. It was also noted that the new Credit Union building is completed and paid for.

Glen Bunker (Manuals) and Carl Taylor (Material Control) were elected to Credit committee positions. Reggie Halligan (IM Planning) and Willie Henning (Communications) are alternates.

Board member Ted Shaver said that the officers for 1963 pledged a continuing policy of efficient Credit Union operation.

Foundation, F&M Donate \$1000

Portland State college received a donation of \$1000—\$500 from the F & M Scholarship Fund and a matching Tektronix Foundation gift—this week to supplement funds in the college's student small loan fund. The fund provides short term loans for students who may otherwise be forced to drop from school during regular school terms.

Money for the F & M Scholarship Fund was accumulated by a regular \$2 per month donation from F & M department managers. The fund was sweetened by a \$1 fine for managers arriving late at meetings. The fine additions actually dwindled to nothing.

The Scholarship Fund was initiated 18 months ago by Ash Ashenbrenner (F & M manager) and heartily supported by F & M managers. Jim Morrow acted as treasurer of the fund and Jim Sare and Bob DuFresne arranged for final disbursement with Dr. Millar, president of Portland State college.

ELECTROCHEMICAL CONSTRUCTION

A construction bid from the Ross Hammond Co. was approved January 9, for the Electrochemical building. Estimated completion and "move-in" date is October 1.

Teks in the News

The cover of February's "Micro-waves" magazine will picture Tektronix' new T519C CRT. Egon Ellsner (CRT Tube Design manager), Larry Simpson (CRT Tube Design) and Cal Hongel (Instrument Design) wrote a tube description which appears inside. The magazine also contains a technical article on sampling, written by Cliff Moulton (Instrument Design).

NAACP member Wally Priestley (Plant 1 Test) appeared before a Tuesday meeting of the Oregon State Board of Higher Education to present information concerning racial aspects of college fraternity and sorority membership qualifications.

John Tomberg (IM Planning) and John Weigand (DOQA) attended the Ninth National Symposium on Reliability and Quality Control in San Francisco, Tuesday, Wednesday and Thursday.

Norma Caufield (Field Maintenance Support) retired after 11½ years at Tektronix. She was hired in 1951 and had worked in Assembly, Planning, Engineering and Marketing.

On January 11, Jack Schaller (Drafting GM), John Erb (DOQA) and Chuck Kauffman (Mechanical Engineering Standards & Procedures) attended an Industrial Education Institute seminar in San Francisco entitled, "True Position Dimensioning and Tolerancing."

Tekaqua Installs New Club Officers

Tekaqua elected 1963 officers last Friday night. They are: Dave Lohr (Provisioning Documentation), president and ICRC representative; Leo Fief (Shop Inspection), first vice-president; Herman Boll (Machine Building), second vice-president; Don Sherrod (Mechanical Design, third vice-president; Don Hoch (Data Processing), treasurer and Jessie Bennett (Plastics Processing), secretary.

Board of directors for this year is: Ed Stowe and Hank Jones (Manufacturing Engineering Oven & Kiln), Dick Braniff (Manufacturing Tooling GM) and Tim Kirtley (Manufacturing Tooling).

Tek Baseball Club Elects 1963 Officers

The Tek Baseball club elected 1963 officers, January 16. They are: Chuck Duquette (Manuals), president and manager; Dick O'Brien (Transformers), vice-president and assistant manager; Ken Nelson (Stock Warehouse), treasurer and ICRC rep.

Later meetings will establish schedules and teams. Chuck stated that persons interested in club participation this year must contact him, ext 7357, by Feb. 15.

Tek Hockey Team Loses

The Tek hockey team, competing in the three-team Portland hockey league, now is in last place with no wins and two losses. In its latest game, January 14, the team lost to the Red team, 8-2, at Memorial coliseum.

Departmental News

Electrochemical

We are happy to have **June Reed** back to work after a stretch in the hospital.

Roger Sogge is back after a "falling out" with his new home-building project, suffering just bruises, luckily.

Bruce Wong reports he will manage a Little League group this year.

Best news all: Our building is a building!

Component Selection

Artie Nelson passed her seventh Tek anniversary this week and **Betty Adams** her sixth. Together they served our group to celebrate the events.

Our group had 100 per cent attendance on January 14 when the roads were sheets of ice. Some came from as far as Salem and Oak Grove.

Plant 2, Vern Keller's Group

The following group members celebrated their Tek anniversaries recently: **Evelyn Meyers** (seven years); **Jo Ragsdale** (three years); **Alice Ploghoft** and **Pat Findley** (one year); **Elinor Hopper** (four years) and **Nora Pirrie** (three years).

We all welcome **Margaret Miner** back into the group after six months on swing.

Cake was served last coffee break January 4 for **Larry Fitzpatrick**, who went on swing.

Plant 2, Phil Mallery's Group

John Rankin is our new utility man. **Elaine Regan** is new in our group. **Virginia Mae Brown** became engaged to **Bill Schmitz**.

Capacitors, Swing

Group elections were held January 15. **Pauline Newsome** was re-elected group representative; **Alma Ward** ernate; **Darlene Owen**, social chairman and **Sally Frye**, Tekweek reporter.

We welcomed **Hal Krouth**, supervisor, back to work after he spent a week's vacation in San Francisco.

Darlene Owen served fudge to show our appreciation to **Ted Hiatt**, who was acting supervisor on swing the past week.

Plant 2, Ram's Lambs

Charlotte Estabrook treated the group to celebrate her first anniversary at Tek.

Our group had potluck January 4 in honor of **Bill Mayer**, who left us to go on Cables, days, and **Bud Ramsdell**, our new foreman. Bud was unable to attend, because of illness.

A baby shower was held for **Bill Mayer**, January 5, much to his surprise.

Plant 3, Johnson's Jewels

Opal Bowles celebrated her first anniversary at Tek January 15.

Building Service, Nite Owls

Bonam Wiley, upon completion of his second year at Tek, transferred to CRT Bulb Prep.

Duane Sylvester transferred to **Jack Vandehey's** group at Sunset.

Ed Adams transferred to our group from Sunset.

Larry Seeber, formerly of our group and now in the Air Force, stopped in to pay us a visit.

71—C/S Strip

Ellen Stout treated the group January 15 to celebrate her first year at Tek. **Timothy Floyd Stewart**, 17-year son of **Floyd Stewart**, joined the group for three years and left for Fort January 17 for basic training.

Jo Anna Titus had the misfortune to lose most of her belongings when her parents' home on Wilsonville road exploded from unknown causes January 11. Fortunately, no one was home at the time.

Plant 2, Bob's Vyna Koters

Jim Tester has been chosen by the group as "Jumper of the Month." Jim dove from his car when it got out of control on his way to work last week.

Betty Spohn is playing hookey over at the Sunset plant this week.

Plant 3, Tom Moore's Group

Doris Rothenberger marked her sixth Tek anniversary by treating the group; **Eva Paylor** treated the group to celebrate her fourth year at Tek.

Barbara Riverman returned to the group from Accessories for a short time before being loaned to Capacitors.

Olive Spitzer's husband, **Charles**, who works in Plant 3 Cabinetizing, is in the hospital. He is recovering from a broken arm received from a fall on the ice.

We treated **Alice Danner**, who celebrated her 21st birthday recently.

Plant 1, Rickman's Relics

Betty Hergert treated the group when she transferred to Mechanical, day shift. Cake was also served for **Joan Watts**, who transferred from Mechanical, days to the swing shift.

Plant 3, Marshall's Deputies

We welcome **Maylene Cuddington** and **Erlen Miller** back to our group. **Judy Norby** visited with her baby boy.

Birthday cakes were served for the group's birthday girls.

Jean Stoffer terminated. **Inge Broze** transferred to Diodes department at Sunset.

Erlen Miller was treated in honor of her recent marriage.

CAMERA BUGS

Bill Meyer (Photography) asks that anyone interested in forming a Tektronix Camera club contact one of the following:

Art Stipe MI 4-8334

Paul Soderquist . AL 2-4168

Bill Meyer MI 4-9767

Basketball

Jan. 14-18

Personnel—35, Transformers—30
Plant 4—56, Plant 2—29
Warehouse—52, Shop—51 (OT)
Plant 3—55, Research—43
Sunset—47, Plant 1—38

League play will be postponed one week, with the next action scheduled for February 6 and 7.

300 Game



TROPHY EXEMPLIFIES Bob White's (CRT Gun Assembly) first perfect bowling game, rolled January 13 at Rainbow Lanes in Forest Grove. A non-league game, it won the trophy but no prize money. Bob carries a 189 average in Rainbow's Wednesday scratch league; his highest previous game was 279.

Bowling

Jan. 14-18

Delores Douglas (Plant 3 Assembly), Scopettes bowler, earned an ABC triplicate patch with her three 148's.

Difficult splits picked up in Tek Bugs league included: 6-7-10, **Lorraine Stewart**; 4-7-10, **Helen Sherrod** (Special Products) and **Kathy Leslie** (Shop Prepack).

High game and series honors for the week's bowling were:

Tek Women's: **Rose Skinner** (Plant 1 Test) 165; **Florence Hood** (Plant 1 Special Stock) 440.

Tek Men's: **Roger Maxfield** (Electrochemical) 237; **John Winkelman** (MSE) 214, 192, 186—592. 20 over-200 games were rolled.

Tek Late Winter Mixed: **Yvonne Sandy** (Plant 1 Assembly) 171; **June McCracken** (Accessories) 435. **Bob Tracy** (Plant 3 Test group manager) 234, 556.

Scopettes: **Flip Nedrow** (Coils) 205, 513. Other 500's: **Betty Bohall** (Plastics Preproduction) 505; **Luouise Jones** (Accessories Test) 502.

Tek Bugs: **Audrey Critchfield** (Shop Etching) 190; **Lorraine Stewart** 544. **Burt Eberly** (Manufacturing Tooling) 212; **Ted Hiatt** (Capacitors unit manager) 569.

Job Postings

Tektronix employees should contact **Alice Kida**, ext. 7620 (8-7620 from Sunset), to apply for positions listed in JOB POSTINGS.

CLERK-TYPIST: Woman to work day shift for the Planning department of Plant 3, Instrument Manufacturing (J.P. no. 704).

FUNCTIONS: Perform general typing and filing duties; maintain Bill of Materials; perform receptionist duties.

QUALIFICATIONS: Ability to work accurately with numbers and detailed information; typing and filing skills.

GRAPHICS CLERK: Woman to work day shift for the Graphics group of the Electrochemical department of Fabrication & Molding (J.P. no. 3418).

FUNCTIONS: Coordinate all materials and film work required to process orders; set up new film files and maintain existing files; type.

QUALIFICATIONS: Organizational ability, some filing experience; type 40-50 wpm; able to work with minimum supervision; ability to read mechanical drawing prints helpful.

STOCK CLERK: Man to work day shift for the Stock-Warehouse department of Materials Management (J.P. no. 1489).

FUNCTIONS: Deliver materials from dock to various areas in plant; maintain and order materials for automatic shelves; perform necessary clerical work involved.

QUALIFICATIONS: Stock and material handling experience helpful, but not necessary; good clerical aptitude, mental alertness; good physical stamina, able to stand most of the time.

CLERK-TYPIST: Woman to work day shift for the Stock-Warehouse of Materials Management (J.P. no. 1488).

FUNCTIONS: Type, file keep records; record warehouse input and output of finished instruments; keep current 'on hand' file of instruments in warehouse.

QUALIFICATIONS: High school, business school and/or equivalent clerical experience; numerical accuracy; memory for procedures; ability to do detailed work.

RECORDS CLERK: Woman to work day shift for the Engineering Procurement group of the Purchasing department of Materials Management (J.P. no. 1212).

FUNCTIONS: Type letters and purchase orders from dictaphone; maintain Kardex records; answer telephone.

QUALIFICATIONS: Typist, ability to work with minimum of supervision; accurate filing; organizational ability; highly compatible.

CLERK: Woman to work day shift for the Factory Repair group of Field Engineering of Marketing (J.P. no. 4154).

FUNCTIONS: Keep accurate inventory records of all Pool I instruments; responsible for employee loaner instruments; keep records of instruments returned from customers, shows and field offices; do paperwork necessary for return of these instruments to Production; process paperwork on accessories returned from the field for repair; communicate with Accessories, Precision Mechanical Assembly, MSE and Customer Service on status of items for repair.

QUALIFICATIONS: Basic knowledge of Tek instrument line desirable; ability to recognize different models by Type number; typing; accuracy and attention to details; ability to communicate with others.

MISC. FOR SALE

2-PIECE SECTIONAL: \$95; 4 dining chairs, \$45; 2 cherry end tables, \$45 ea. MI 4-0961.

HAM GEAR: 200-watt, SSB trans., 10-80m, \$160; VFO, \$20; D-104 mike, \$7. Bean, ext. 325 or MI 4-8996.

CO'S BIKE: 24 in.; boy's bike, 26 in., \$7 ea. CH 4-3632.

DRAPES: fit 6-12 ft. windows, beige background w/modern design, hooks & rod, \$40 or best offer. 244-7938.

TWO FORD WHEELS: new, 14-in., \$9.50 ea. PR 4-7066.

WEDDING DRESS: & veil, size 10, 3-tier w/lilypoint sleeves, excel. bargain, \$40. 223-6070.

MALE SAMOYED: AKC reg., complete w/doghouse & '63 Clackamas license, \$25 or best offer. Stan Griffiths, ext. 344.

SPARK OIL HEATER: 100 gal. barrel & feed-in line, \$20. Monty, ext. 646 or JA 7-2135.

ELECTRIC RANGE: apt. size, very gd. cond., \$50 or best offer. MI 4-6376.

ELMAC PMR-6A: mobile receiver w/12v pwr. supply & manual, excel. cond., \$65. Ray Hein, ext. 574 or OL 8-2282.

WOMAN'S SKI PANTS: imported, gold, size 10, cost \$32.50, sell \$12. CY 2-4662.

DAVENPORT: newly recovered, 7 ft., rust color, loose pillow back, \$75; color TV, RCA, as is, trade for best TV offered or ? CH 6-1844.

CHROME DINETTE SET: \$14. MI 4-0034.

MOUTON JACKET: like new, size 12-14, \$30. MI 4-7086.

BASSINET: w/liner & mattress, \$10; nearly new playpen w/pad, \$15. MI 4-6528.

RCA ELECTRIC RANGE: Estate, 30 in., gd. cond., \$65. MI 8-5700 aft. 5.

CHRISTENING DRESSES: imported Spanish lace, \$6 to \$15. AL 2-6090.

WEDDING GOWN: perf. cond., size 12-14, cost \$125, sell \$65. Betty, ext. 289, MI 4-2597 or AL 3-3478.

CRAFTSMAN TRAILER: one-wheel, w/steel frame body, like new, \$45. CH 4-2249 aft. 4.

MEN'S WRIST WATCH: 21 jewel, auto. wind, approx. value \$55, trade for good portable TV set. Ext. 510.

PICTURE WINDOW: 4 x 6 ft., \$20; '60 Ward's Riverside motor scooter windshield, luggage carrier, excel. cond., \$175. Milt, ext. 340 S or MI 4-8906.

STEP TABLES: walnut-grained, & coffee table, like new, \$30 for set. Helen Berger, ext. 7203 or MI 6-2292.

DANISH MODERN DAVENO: & chair, dark brown, reversible cushions, \$85 or make offer. Bob Keen, ext. 7108.

MAYTAG CLOTHES DRYER: good cond., \$60. Anita, ext. 7744 or MI 4-7055 aft. 4.

DELUXE GAS RANGE: O'Keefe & Merritt w/all auto. features, like new, \$60. CH 6-5777.

WEBCOR TAPE RECORDER: 1 yr. old, used twice, trade for movie camera or sell for \$75. CH 4-1421.

JOHNSON MOTORS: '46 2 1/2 hp, \$35; '60, less than 50 hrs., \$195. Chuck, ext. 351 or 287-9571 aft. 4:30.

SHEET METAL SHEAR: elec. skil. 16 ga., nearly new, was \$115, now \$50. Errol, ext. 350.

MAN'S SKI EQUIPMENT: 6 ft. 9 in., Kneissl skis, size 10 boots, safety bindings, pants & parka, gd. cond., \$55. Tom, ext. 7145 or 285-7245.

TOY ENGINE: 6 1/2 hp, minus carb. \$20; 2 rubber-tired Planet Jr. tricycle wheels, \$10. 331-2457 bef. 3 p.m.

WINDOW WITH GLASS: 6 panes, 8 x 5 ft., \$8; boat, glass-lined, 13 ft., like new, \$35. CH 4-8847.

SHOE ROLLER SKATES: 1 pr. ladies, size 9N, used once, \$15. Marge Daulsberg, ext. 672 swing.

Trading Post

Deadline: ads must be received at the Tek-week office by Friday noon to appear in the following issue; send to delivery station 74-298

or phone extension 405; 1 ad per person per issue; 15-word limit does not include name and phone number.

MISC. FOR SALE

HI-FI PREAMP: Heathkit, w/pwr. supply, 5 yrs. old, \$12.50. Tom Bull, ext. 7170 or MI 4-4523.

'59 HOTPOINT DISHWASHER: portable, excel. cond., \$75. Pat, ext. 401.

WOOL BRAIDED RUG: 9 x 12, \$50. Sandy, ext. 205 or MI 4-9007.

HAMSTER CAGE: \$2. Madeline, ext. 7583.

UREA: 46 per cent for fertilizer or ice removal (non-corrosive), 80-lb. bag, \$5.25. Frank, ext. 7214 or AV 6-0395.

ELECTRIC RANGE: gd. cond., \$20. MI 8-3686.

FRIGIDAIRE RANGE: 40-in., gd. cond., \$50. MI 4-0014.

STEREO TAPE RECORDER: four track, professional unit, extra speakers, turn table, \$400. OL 9-1442.

CARLSON ENCLOSURES: 2-15 in., w/speakers, make offer. Roy Harden, ext. 7550.

HIDE-A-BED: w/T cushions & Simmons mattress, \$55. MI 8-1023.

AIR COMPRESSOR: "Spray-It", 1/4 hp motor, 30 cfm, new, \$25. Lee, ext. 655.

RENTALS

SLEEPING ROOM: men only, \$6 week, 457 S W 2nd, Beav. Mrs. Humburg, MI 4-1377.

4-BDRM: unfurn., country home, fp, school bus stop, west of Hazeldale on Farmington rd., \$85. MI 4-5259.

1-BDRM: duplex, cozy, clean, convenient location, \$72.50. 375 S W 5th, MI 4-7242.

1-BDRM: duplex, ptly. furn., 1 or 2 persons, \$50 incl. water, 7165 S W Hwy. 217. MI 4-5243.

3-BDRM: gar., on lge. lot in Lake Grove near freeway, \$90. CH 4-7355.

2-BDRM: apt., in Beav. avail. Feb. 1, \$75, all util. paid. except elec. MI 4-5075.

1-BDRM: attached gar., lge. kitch., liv. rm. has fp, semi-furn., in Beav., \$90. MI 4-2356.

4-BDRM: farm house in Scholls, \$55. MI 4-6792.

1-BDRM: furn. house, 1 mi. to Tek, \$65. MI 4-8876.

1-BDRM: Aloha, \$47. MI 4-4312 or MI 4-2260.

RIDES WANTED

FROM 1310 S W COLLEGE ST: or 12th & Jefferson to bldg. 47, 8-4:30 shift. Millie, ext. 316 or CA 2-2815.

FROM S E 97TH: betw. Burnside & Stark, day shift, to bldg. 39. Georgia Fields, ext. 7698.

FROM S W ST. CLAIR: to bldg. 39, day shift. Betty Robb, ext. 7698.

FROM HILLSBORO: S E 18th to Sunset plant, 7:30-4 shift. MI 8-5113.

FREE

MALE KITTENS: 1 black, 2 black & white, housebroken, 7 wks. Jin Jungwirth, ext. 672 swing or JE 8-2473.

CINDERS SPADE FEMALE: 10 mos. old, shots, wants country home. BE 5-7483 aft. 5.

THREE KITTENS: Ella Beaver, ext. 7698.

WINDOW SIDE CURTAINS: for '59 Sprite. Art Arnold, ext. 396.

HOUSES FOR SALE

3-BDRM: Bel Aire, ranch style, 1 2/3 bath, fp, din. & fam. rms., hdwd. floors, fenced bk. yd., birch. kitch., \$14,950 FHA w/\$450 down. MI 4-4207.

3-BDRM: 2 bath, lge. fam. & din. rms., fp, builtins, garb. disp., dble. gar., \$17,900. 12840 S W Bowmont, Cedar Hills.

3-BDRM: Cedar Hills, completely redec. in & out, fenced 72 x 120 lot, gar., refinished floors, din. area, fp, garb. disp., \$12,500. MI 4-8523.

3-BDRM: lge. liv. & din. rms., den, att. gar., 100 x 165 lot, corner fp, 1 1/2 miles from Tek, \$12,300. MI 4-7901.

3-BDRM: den, liv. & din. rms., fp, full bsmt., gar., comp. furn., \$10,400. Darrell Hall, 234-1608.

3-BDRM: din. rm., fp, new ceramic tile bath, secluded patio, nicely landscaped, \$11,700 or assume mortgage, \$89 mo. MI 4-5848.

3-BDRM: 1 1/2 bath, fp, lge. cov. patio, 1/2 acre lot, Cedar Mill area, \$14,500. MI 4-0539.

3-BDRM: contemporary, lge. lot, close to schools, shopping & Tek, 1 1/2 yrs. old, \$9300. noth. down, FHA. MI 4-4021.

2-BDRM: at Scholls, 6 yrs. old on 5 acres, 10 miles to Tek, \$15,000 KE 9-8554. aft. 4.

3-BDRM: 2 bath, fp, patio, lge. dble. gar. w/storage, walk to Vose school, take over GI loan or \$500 down FHA, \$14,500. MI 4-7749.

MOBILE HOME: '57 Nashua, 2-bdrm., 8 x 45, excel. cond., \$2190. MU 7-3558.

3-BDRM: 2 bath, 2 fp, w/w carpet, day-lite bsmt., appraised \$20,700. Lloyd, ext. 266 S.

2-BDRM: full-length semi-finished 2nd story, 80 x 104 lot, fully fenced bk yd., must sell, FHA appraised \$12,175. MI 6-1453.

3-BDRM: 2 bath, fp, dble. gar., ex. lge. patio, fenced-in yd., 4 1/2% GI loan, \$15,000 or make offer. S. E. Beav. Ext. 7234, 7685 or MI 4-6467 eves.

3-BDRM: lge. back yd., patio, dishwasher & disposal, 1380 sq. ft., terms, \$15,800. MI 4-3581.

MOBILE HOME: ultra modern 50 x 10, Champion Lakewood, 2-bdrm., w/w carpet, \$4000, might rent. Jackie, ext. 270 or MI 6-2587.

1-BDRM: 4 acres, w/unfinished addition containing fam. rm., 1/2 bath, possible 3-bdrm., \$14,500. MI 6-2292 or CY 2-3402.

2-BDRM: new cabin near Mt. Hood, handy to golf, swim, hike, \$4000. \$500 down, \$50 mo. Mendel Phillips, ext. 7474 or AL 4-7554.

3-BDRM: Vermont Hills, fenced yd., bus at door, close Hayhurst elementary, Alpenrose dairy, \$11,950. CH 4-9366.

ACREAGE

LEVEL LOT: in Sunset Homes, close to Tek, 100 x 150, \$1500. PR 4-9752.

WANTED

CO-AXIAL CABLE: 75 ft., RG59-U. Jim Tester, page 7201.

PHOTOGRAPHIC EXPOSURE METER: used, gd. cond. Ron Powell, ext. 7474 or BE 5-4560.

WOMAN TO SHARE HOME: w/working mother of 2 small girls in exchange for board & room. PR 1-1980 a.m. or MI 8-5121 p.m.

CARS FOR SALE

'50 CHEVROLET: 2-dr., pwr glide, gd. cond., w/4 new tires, \$175. MI 4-9510 aft. 4.

'54 DESOTO: 4-dr., V-8, auto. trans., pwr. steer. & brakes, r/h, w/w tires, 2-tone, 50,000 miles, \$225 or offer. CA 3-5043.

'57 FORD: 4-dr., country sedan wagon, \$795. Ken Stuart, MI 4-8448.

'57 FORD: Fairlane 500, 2-dr. hdtip., V-8, od, gd. batt., antifreeze, very gd. shape, \$995. MI 4-8076.

'60 CHEVROLET PICKUP: 1/2-ton, 2-speed, 6-cyl., wide box, top cond., \$1145. Ruben Rosen, JE 8-4677.

'38 PLYMOUTH PICKUP: gd. rubber, new batt., all-steel body, \$125. CH 4-1421.

'62 FORD: convert., black w/white top, red interior, auto. trans., excel. cond., still under warranty, \$2800. Gordon Coulter, page Plant 1 swing or AI 3-8752 days.

'51 GMC PICKUP: 4-speed trans., long box, \$195. Virginia, ext. 7315 or MI 4-8535.

'55 PONTIAC: 2-dr. hdtip., gd. cond., \$300. Ed Norgard, CH 6-2729 aft. 4.

'57 PONTIAC: Chieftan, 2-dr., r/h, auto., new tires, \$750. Ira, 777-3567.

'53 BUICK: 2-dr. hdtip., running cond., \$115. CY 2-3653.

'850 AUSTINS: two-'60, & '59 Porsche coupe, make offer. John Antons, PR 4-7491.

CHILD CARE

EXPERIENCED CARE: in my home, child & infant, hourly, daily, eves, & weekends. Uplands, Westhaven dist. 292-2286.

BABYSITTING: my home, 548 S E 3rd, Beav., 2 yrs. & up. MI 6-1085.

CHILD CARE: \$2 per child, days, my home, near Bertha Beav. hwy. CH 4-7209.

METZGER AREA: my home, 1 or 2 children, 6 mos. & up. 244-9035.

HILLSBORO AREA: my home, days, 228 N. Bailey. MI 8-2616.

HOT LUNCHES: day or night, near Tek, any age, my home. MI 4-0808.

RELIABLE MOTHER: weekdays & Sat., own home, near Bel Aire shopping. MI 4-5061.

GARDEN HOME AREA: care by mother of 2 yr. old, our home, days. CH 6-6671.

CHRISTIAN HOME: 2 yrs. & up, close to Tek. MI 4-7666.

Credit A/R Girls Move

Elizabeth Henderson, Maxine McCormic and Donna Alderman (all of Credit A/R) have moved to temporary quarters in the Cedar Hills shopping center. The delivery station is 92-600; extension is 302 Sunset.

NON-CITIZENS MUST REGISTER

Persons who are not United States citizens must register with the US Department of Justice before January 31. Alien registration cards are available at all post offices. They must be filled out, then turned in to a post office clerk.

UNION, N.J... In the Heart of the Eastern Seaboard

'Tektronix' Union, New Jersey, field office is a one-office district; geographically it is the smallest district. Instrument sales, however, compare favorably to larger districts' sales, indicating the density of industry in the Union area.

Although New Jersey is only one-fourteenth the size of Nevada, it has more than 600 times as many persons per square mile. It furnishes homes for hundreds of thousands of residents who travel to and from their jobs in New York and Philadelphia. The state lies in the heart of the thickly populated Eastern Seaboard region. That central location has aided its progress in trade and finance.

The Tek field office is located in a less congested suburb, Union, chosen especially for easy access to major highways. Tek Union's major customers are rurally located, too. Seldom do they have to call on customers in the cities or crowded areas.

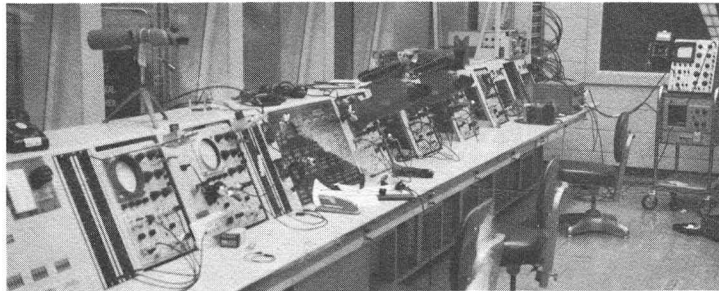
About one-fifth of the Garden State, as it is called, is covered by the Piedmont Plateau which consists of low, rolling plains broken by high ridges—known locally as mountains. There are some wide-open spaces in the state where a lot of farming is done. But last year, of the fourteen Tek employees at the Union office, thirteen lived in different towns.

Research and development make up the largest part of Union's territory. Military customers are an important part of the picture, too.

An interesting customer is Bell Telephone Laboratories, an affiliate and basic research and development arm of AT&T, which has three large facilities located



Union Field Office: 400 Chestnut street, Union, New Jersey.



CONTROL ROOM for the C Site Stellerator Room of Forrestal Research Center at Princeton university uses many Tektronix instruments. The ultimate aim there, according to our Union office, is to build up electric power—using water for fuel.

at Murray Hill, Whippany and Holmdel, N.J. At the Murray Hill location there are 7000 employees pursuing basic research projects with approximately 2600 Tek instruments. At Whippany, work is concentrated on the development of military systems such as the Nike-Zeus Control System. Holmdel recently opened a new 50 million-dollar laboratory where systems research is conducted. Presently, the large contract there is UNION—Universal Integrated Communication System. Bell Telephone Labora-

tories helps to develop all AT&T communications systems; they are responsible for the discovery of the transistor.

A humorous experience happened to Jim Griffin when he was FME supervisor. One evening a gentleman stopped by with trouble-shooting and operating questions about his Type 121. Jim gladly helped the man and gave him an operator's course. A little later, Jim discovered that the fellow he had been coaching was THE Dr. Brattain, one of the fathers of the transistor and a research scientist at Bell Telephone Labs.

The manner in which Tektronix instruments were used with Telstar is so diverse that it cannot be categorized. Most of the instruments—545A, associated plug-ins, 555 and 160 series—went to the labs at Murray Hill and Irvington where the satellite was built. Bell used its submarine cable manufacturing facility to actually build the Telstar because of the necessity of a clean environment. More instruments went to Rumford, Maine; Holmdel, N.J.; France and other locations.

Immediately prior to the success or culmination of Telstar, that is, prior to getting it in the air, Bell Telephone Laboratories found out that several scopes were required for locations outside the United States. The Union field office was able to supply the instruments on schedule with the assistance of Teks in Portland.

Bill Pyle held training programs specifically for technicians connected with the Telstar program who would be working outside the US where local field engineering support was not available.

At an Ivy League school, Princeton university is another interesting customer. The Penn-Princeton Accelerator, which is used in nuclear physics and high energy research, is housed there. Extensive research in plasma physics for the Atomic Energy Commission is carried on there, too.

The Union, N.J., office terms Radio Corporation of America (RCA) an outstanding customer. Among its many locations are: David Sarnoff Research Laboratories, Princeton; Astro Electronics Division, Princeton and Heightstown; and the Semiconductor Materials Division, Somerville. Astro Electronics Division is responsible for the Tiros, Nimbus and Ranger projects.

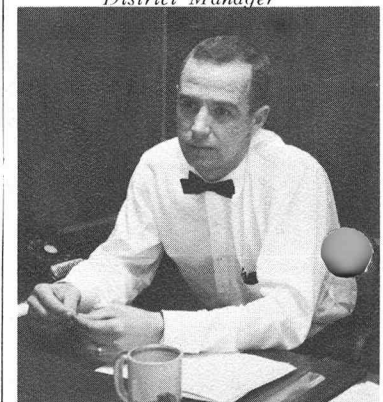
A customer which is primarily responsible for the development and production of military communications, radar systems and portions of TACAN is the International Telephone and Telegraph (ITT) Federal Laboratories.

The Union field office was opened November 1, 1956, by Harry Allison, who now works in the Advertising department in Beaverton. At present the following thirteen employees keep the office running smoothly:

Dick Herdman, district manager; Harriett DeLong, district secretary; Bob Keyes, Bill Lyle, Jim Griffin and Dick Bellamy, field engineers; Diana Green, Kathy Mohar and Helen Ruth Clifford, field secretaries; Leonard Bell, Aaron Eisenbach and Myron Forrester, field maintenance engineers; and Andy Calamaras, stock man and all-around helper.

Bill and Harriett enjoy painting; Bob golfs; Leonard, Aaron and Myron bowl frequently; Kathy is working toward a BS degree at Fairleigh Dickinson university; Diana starts courses at Union Junior college next month; and Andy is studying for a degree at Newark College of Engineering. An event that is becoming a tradition is Dick's Halloween party where costumes are a must. Besides being an excellent host, Dick is an accomplished twister.

Dick Herdman
District Manager



Teks in the News

R.C.A. Moore (Education & Training) was a panel member in the third session of the Fifth Annual Business Conference at the Benson hotel Wednesday. Subject for panel discussion was "The case method—its place in management development." "Ash" Ashenbrenner (F&M manager) and Bob Scott (F&M Personnel staff) also attended the all-day conference.

During the January 15 tour of Tektronix by members of Product Inventory Control association, Ray Crino (Material Stores) gave a talk on Tek's inventory control methods, and Bob Tracy (Plant 3 Test GM) gave a scope demonstration.

Paul Terry (Accessories Design) and Stan Chojecki (Component Evaluation) attended a class on wire and cable manufacturing problems, January 14 and 15, in Clinton, Mass. Surprenant Mfg. Co., a subsidiary of International Telephone and Telegraph, gave the class.

Calendar

Bridge club tournament—7:30 tonight at St. Bartholomew's Episcopal church.

Hockey game—9:00 Monday at Memorial coliseum. Tek Black—Tek White; free admission.

Bridge club—7:30 Wednesday in Building 45 cafeteria.

Rock club field trip—9:30 Saturday morning, February 2. Meet just outside Garibaldi, towards Tillamook. Barview jetty (pyrites); Bay Ocean and Short beach (agates). Heavy equipment required for pyrites.

TEKINTAG MOVES

Tekintag (Tektronix International A.G.) in Zug, Switzerland has a change of address: Tektronix International A.G., Zeughaus-Gasse #9, Zug, Switzerland, (P.O. Box 57).