

Tekweek

Vol. 3, No. 50 Tektronix, Inc., Beaverton, Oregon March 15, 1963

FEMCO Fire Ruins 27 Tek Instruments

Tuesday, March 5. Sandy Sanford, Portland field engineer, and Don Clifford, District manager, swung through McMinnville for a routine customer stop at Field Emission Corporation. On the edge of town Sandy commented, "These folks usually have a couple of problems I can help with."

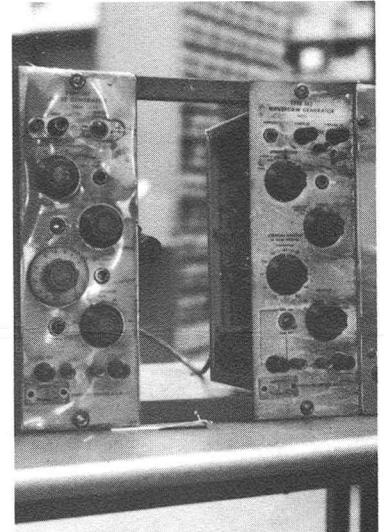
Sandy's prophecy was fulfilled as he and Don walked into a smoke-stained electronics lab at FEMCO, to face 27 badly-damaged Tek instruments and accessories. Test equipment in the lab started a fire which smoldered for several hours before smothering itself in the airsealed room. Superheated air and heavy smoke caused extensive damage to Jack Hipper-son's experimental lab (Jack worked in Tek's Calibration department during the summer of 1957).

Intense heat from the lab fire melted the aluminum side panel of a 519 oscilloscope. Sandy estimated the temperature must have been above 1300° F. Zinc die castings around camera adapters also melted.

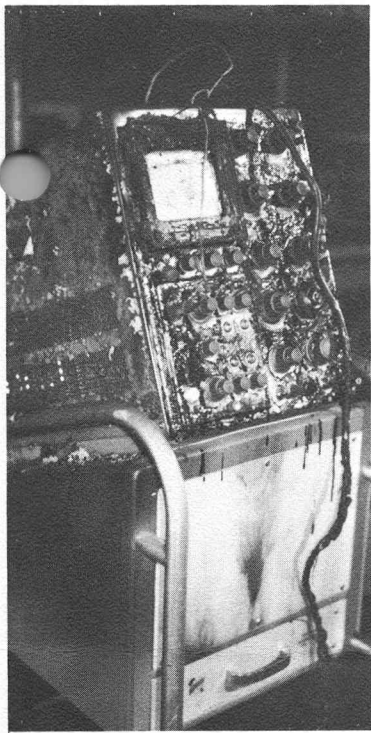
Five Tek-owned loaner instruments were destroyed in the blaze. A 545A/CA (pictured) received the worst damage, and three 160-series instruments were also lost. FEMCO's total loss figure for Tek instruments will not be available until Harry Tompkins' Factory Instrument Repair group completes evaluation of the damage.

Lab personnel expressed amazement when Sandy and Don walked in. Jack Hipper-son was across the street at the time phoning the Portland field office to ask Sandy to stop by. "How did you know about the fire?", asked one of the lab employees. And Sandy, with a straight face, replied, "Tek field engineers make it a practice to know what's happening with all their customers!"

In addition to providing them with technical advice about cleaning electronic instruments, Sandy donated half a barrel of his own Kelite Spray-White liquid detergent to aid in cleaning up the area. The special cleaning compound is not locally available on short notice.



THESE 160-SERIES instruments did not survive Field Emission Corporation's fire. The 161, 162 and 160A were on loan to FEMCO at McMinnville. Twenty-four other Tektronix-built instruments were damaged in the blaze.



ALL FIRED UP — Tek-owned 545A/CA/500A, damaged in Field Emission Corporation's blaze last week, are in Factory Instrument Repair for evaluation.

National CU Magazine Interviews Two Tek

In the February issue of *Credit Union Bridge*, the official publication of the Credit Union National Association, Dick Montag (Plant 2 manager; Tek Credit Union salary committee chairman) and Otto Zach (Manufacturing administrative assistant; Tek Credit Union president) were interviewed.

Their statements appeared in an article entitled, "Fair Compensation." Fifteen credit unions throughout the United States told how they decide on what to pay their credit union employees.

Wim Velsink Heads Accessories Design

Effective last Thursday, March 7, Lang Hedrick transferred management of the Accessories Design department to Bill "Wim" Velsink.

Lang is now manager of three functions which make up Engineering Services — Component Evaluation, Switch Unit and Accessories Design.

Two Magnetic Tape Units Installed In Tek Data Processing Department

On February 23, IBM installed two 7330 magnetic tape units in Tek's Data Processing department. Use of the tape units will quicken processing time, insure more accuracy and reduce costs in Data Processing operations.

Presently, the 7330 magnetic tape units are being used for the Credit group's Accounts Receivable and Sale Analysis program which is presently being run at Multnomah Data Processing Center in Portland on an IBM 1410 computer. The new tape system is also being used to convert Data Processing department's master card files onto magnetic tape.

The tape is capable of storing 556 characters (or digits) to an inch. One reel of magnetic tape holds approximately 14,000,000 characters. A reel is 10½ inches in diameter and contains 2400 feet of tape.

The 1401 computer in the Data Processing department here at Tek is able to read 20,000 digits per second from the magnetic tape. To put information onto tape, IBM cards with information in them are fed into the 1401 which transfers the data to reels of tape.

The following example shows how compact the magnetic tape method is: The data contained in 50,000 IBM cards (with 80 digits of information punched into each card) is equal to approximately one-fourth a reel of magnetic tape. In other words, four million digits can be stored on a quarter of a reel.

Foundation's Gift-Matching Plan Explained in Detail

Any Tektronix employee who wishes to donate money to a school with an accredited educational program—elementary, secondary, collegiate or graduate level—may ask Tektronix Foundation to match his donation.

Tektronix Foundation's gift-matching plan is the broadest and most liberal of any, state Foundation Secretary Bill Webber, but it cannot match donations for tuition or services, or for the benefit of any particular student. A donor may, however, earmark his contribution for a general purpose, as a science department or a reading fund, and request Foundation matching funds. Donations must be from the personal funds of an employee, \$10 or more, and be US tax deductible.

Bill said that in the past some donations to schools could have

been matched by the Foundation, but were not matched because the donating employee apparently didn't know enough about the donation-matching provision.

For example, Bill added, an employee donated to St. Mary's Academy without requesting Foundation matching funds. The Academy's building in Portland has been condemned by the fire marshal and a new building for their high school must be built by September of 1964. Had the donating employee known more about Tektronix Foundation, her donation could have been matched in this instance, thereby doubling the effectiveness of her gift.

Tektronix Foundation's matching gift plan for accredited education at all levels is intended to encourage the broadening of education's base of support.

The Foundation asks only that a check be: 1) A genuine donation, 2) by an employee, 3) sent directly to the school, 4) for the school's exclusive benefit.

An employee who wishes to have a gift matched by the Foundation should write a check payable to the school and send it to Joanne Edstrom, delivery station 74-866. The donor will be asked to sign a certification statement describing the gift.

Except when a donation does not qualify, which Bill said is very rare indeed, the Foundation will issue a check matching the employee's gift and forward both directly to the school.

If an employee has a question about the Foundation gift-matching plan, (such as whether a particular school qualifies), he may call extension 7151 for more information.

Departmental News

M.M.Q.A.

Congratulations to Lois Smith at the birth of her first grandchild, a boy named Mike.
We'll miss Audrene Cooper who is on leave of absence.

Plastic Pills

Our TV star Glen Mathewson appeared on the Outdoor Sportsman show last week.
Stella White is on loan to the Electrochemical department. Ann Velund is on loan to CRT; Virginia Couture is back from loan to the office.

Plant 2, Friendship VII Swingers

Dorothy Clark underwent minor surgery. Lucille Brust's son, Gerald, was married March 8. Julie Colbert's father passed away two weeks ago.

Plant 1, Planning

The election of officers was held at our last group meeting. Results: Bruce Turnbull, group representative; Francis Manning, alternate; Margaret Fieger, social chairman; Bob Keen, reporter.
Our thanks to Pearle Limper for a wonderful roast beef potluck at which we honored Marilyn Duyck and Millie Harms on their birthdays.
Best wishes to Dee Gardner for a speedy recovery after her recent operation.

Plant 1, John Steven's Group

Phyllis Brown is on loan to Plant 4 office; Nancy Hartleb is on loan to the IO building. Rose Wilkes and Esther Lyski are loaned to Preprod at Sunset.
Cathy Fleury is back from Fabrication and Molding; Barbara Kemper is back from Finals, Plant 1.

Capacitors, Swing

Grace Austin and Elsie Larson terminated March 1. Ray Bernert is Capacitors' new group manager; he transferred from the Modifications area and has been with Tek four years. JoAnn Whitlow transferred from days to swing. New in Potentiometers is Marge Madden from Kit Prep, Plant 3. Millie Bomhoff, who was loaned to us, returned to that same department.
Alma Ward is in the hospital for surgery.
Nina Young is trainer in Diodes. Darlene Owen went on day shift in Resistors March 4, for special training.

Plant 1, Lowell's Moles

Eleanor Brunswick, one of our inspectors, and Ethel Anderson went on day shift March 11.

Plant 2, Ram's Lambs

Velma Decious is back from leave and is with our group. Lorraine Prohaska transferred from Wire Prep to Mechanical.
Mickey May offered to supply a black lamb for us to use as a mascot for Ram's Lambs.
We apologize to the group in Plant 3 whose salads we got into by mistake. They certainly have some good salad-makers over there!

Plant 2, The Shortliners

A smorg was held for Jerry Annas, our utility boy, who left for Kit Prep. New U-boy is Mike Croft.
The Shortliners would like to mention how much we have enjoyed the nice inter-com music we have been listening to lately.

Plant 1, B. Henningsen's Group

Maxine Cedargreen, Don Moe, Carolyn Nightwine, Mardel Potts and Penny White celebrated birthdays recently.

Production Marking

Lila Baker's brother drowned in Alaska March 4.
Bertha Jones returned to our Pre-pack area after being on loan to Electrochemical for two weeks.

Plant 3, Jim's Gems

We served cake when Hildegard Schmidt was married and when Beth Economos terminated. At the same time we honored the February birthdays of Jean Thielen and Joyce Melcher.

Plant 3, Jerry's Mixwell's

Our group will miss Lydia Falla and Lois Rooney who transferred to day shift.

Shop, Swing Shift

On loan to Panelcraft from our department are Bob Brown, Bob Adams and Larry Middleton. We welcomed Sid Zehner who returned to Shop after two months at Panelcraft.

Capacitors

Pots surprised Darlene Moore with a stork shower.
Mary Mercer (4), Charlene Bloom (1), and Beulah Turner (1), celebrated Tek anniversaries.
Bonnie Evans is loaned from Unit Wiring to our department. Mollie Mulcare transferred to Diodes from Unit Wiring.

Plant 2, Mechanical-Wire Prep

Helen McIntosh transferred to Short Line. Cake was served for Irene Ponton who terminated. Maxine Johnson is loaned to Cables.

Plant 2, Cables-Kit Prep

Jo Carmichael's son, Jack, is home on furlough from Hawaii.
Carol Barnes and Wanda Zimmerman are cross-training in Unit Wiring.

Plant 2, Vern's Gabby Gals

Aldine Van Gieson is on loan to Short Line; Vernie Roesle just returned to us from there.
Our group expresses its deep sympathy to Patty Findley at the death of her grandfather.

Ceramics

Murle Schroeder transferred from Ceramic Production to Howard Lewis' group in Ceramic Quality Control.
Janice Klein returned to work from sick leave.

Plant 3, East Side Gang

Marie Vsetecka announced the birth of a new grandson.

Plant 3, McCabe's Babes

Thelma Duling is in Tuality Community hospital in traction.

Accessories, Swing

Our department had a potluck to welcome one new employee and to say goodbye to three old friends. Ronald Staples is new in our test area. He replaces Vernon Coyle who transferred to day shift.
Bruce Buckmaster is awaiting orders to serve six months active duty in the US Army.
Margaret Dauelsberg is terminating today. So does Sharon Hiatt who will be married March 24, to David R. Clemens, US Air Force. They will live in Spokane.
June McCracken gleefully exhibited her bowling trophy. She was captain of the Late Late League second place team.

CRT Parts Prep

Our sympathy to Vilma Leeto at the loss of her mother.
We wish a speedy recovery to Bertha Vining who is hospitalized for a heart condition. Minnie Pesenti is home recovering from surgery.
Refreshments were served when we celebrated the birthdays of Ron Caldwell, Annette Tolzman, Dixie Hieter, Elsie Green, Marjorie Dudgeon and Minnie Pesenti.

Plant 2, Oscar's Awards

New in our group are Juanita Adamson and Vi Lewis, and Iolene Peterson from Kit Prep who is on loan to us.
Laura Gabelman went to Kit Prep for several weeks.
Ariene Stites celebrated a February birthday with us.
Jo Ann Potter will be taking maternity leave soon; we had a cake for her.
Home from Germany is Kay Bone's brother, Steve, who served in the Army there for 2½ years.
Barbara Hartley, who underwent surgery, will be back with us in a few weeks.

Plant 2, Phil Mallery's Group

We had cake for Janene Larson who terminated; Deanne Discasey left for a Hawaiian vacation. We had a smorg in the form of a luau—grass skirts, muu-muus, etc.
Virginia Sipple will help out in Finals.
Mary Mercer treated us on her fourth Tek anniversary.
Phil Mallery's group wishes to thank everyone responsible for the new music. We appreciate the change and enjoy it very much.

CRT Finishing

The Yamhill Trail Riders have asked Judy Berwald to represent the club as a contestant for queen of the Sheridan Rodeo, April 7.
Vince Heinrich was treated to cake and coffee on his March 1 birthday.
A phone call from Detroit, Mich., informed Marie Frazee of a new granddaughter, Jean Marie, born March 3.
Herman Walters and Esther Hall each have bruises and bumps from recent car mishaps.

Thank You

My sincere appreciation for the nice cards and flowers at the loss of my beloved mother, Jennie Charf. Norma Minard (Warehouse Prepack).

We wish to thank you for the azalea plant you sent to us at the loss of our beloved daughter, Della Ann. It will be planted in our garden in her memory. John and Norma Warner (Test, Plant 3).

I humbly thank all my friends at Tek for the many cheering cards and flowers sent to me during my illness. Woody Champlain (Carpenter).

Thanks for the cards and flowers from my friends at Tek after my auto accident. Nancy Cude (Accessories).

I wish to thank my friends at Tek for all the cards and flowers during my stay in the hospital. Tim Harnett (Building Service).

Thanks to all my friends at Tek for the lovely plant and cards sent to me while I was hospitalized. Janice Klein (Ceramics).

I certainly appreciate the flowers Tek sent so quickly at the time of my mother's death in Redwood City, Calif. Bill Kahn (Painter).

We thank our friends at Tek for the lovely flowers and thoughtful words of sympathy at the death of our mother. Vilma Leeto and family (CRT Parts Prep GM).

HOUSES FOR SALE

3-BDRM: sep. utility, newly rededed. lge. fenced yd. w/fruit trees, cov. patio, 4% loan avail. below FHA at \$13,750. 12140 S W Faircrest. MI 4-9706.

MOBILE HOME: '61 ultra modern 2 bdrm. home, 50 x 10, 2-bdrm., carpet in front rm., new furniture, \$3,995, good terms. MI 6-2587 or MI 4-3017.

5-BDRM: liv.-din-fam. rms., 1½ baths, 3 car gar., rec. rm., fp, 1½ acres, horse & stable, \$26,500. MI 4-3326.

3-BDRM: 1½ baths, din. rm., kitch. w/eat. area, built-in range & oven, dishwasher, garb. disposal, w/w carpet, fp, dble. gar., Cedar Hills, \$16,850. MI 4-0584.

3-BDRM: Bel Aire, 1 2/3 baths, ranch style, fp, din. & fam. rms., l'scaped, fenced bk. yd., \$14,950 w/FHA, \$450 dn. MI 4-4207.

MOBILE HOME: 2-bdrm., '61 model, 55 x 10, w/w carpet, w/d, skirting, util. shed, carport, \$4800. Nut Tree Mobile Estate space No. 12. Don Zenger, ext. 445 or MI 4-5981 eves.

3-BDRM: Bel Aire dist., newly rededed, enclosed yd., cov'd patio, near shop. & bus, range & refrig., drapes. \$12,750. MI 4-6528.

3-BDRM: 1 2/3 baths, fp, attach. dble. gar., priv. patio, Beav., \$14,000, nothing dn. MI 8-3314.

3-BDRM: 1 2/3 baths, full wall fp. in fam. rm., lge. patio, wooded area, 1 yr. old, \$16,900, near Tigard. ME 9-5088.

2-BDRM: built-in oven & range, \$4500 cash or \$2000 dn. w/\$65 per mo. MI 4-9327 wkends. or bef. 2:30 wkdays.

3-BDRM: liv.-din-fam. rms., 1½ baths, oversize gar. & lot, garden house, cement dog kennel, \$16,800. Margaret, ext. 633 or MI 4-6680 aft. 5.

3-BDRM: North Plains, \$5900, \$500 dn. & \$75 mo., 2 lots. 331-2106 aft. 5:30.

4-BDRM: 2-level, on corner ¾-acre nr. Tigard, 3 fp, sundeck, patio dn. appliances, party & game rms., gar., \$22,500. ME 9-4446.

MOBILE HOME: '59 Nashua, 50 x 10, w/w liv. rm. carp., excel. cond., \$2700, sell equity for \$500. ME 9-1233.

4-BDRM: S. W. 88th off Barnes rd., walk to Sunset plant, 108 x 120 lot, gar., fruit trees, \$11,700. Write: Alfred J. Peterson, Rt. 2, Box 607, Poulsbo, Wash.

3-BDRM: 2 baths, 2 fp, liv.-din-fam. rms., patio, fenced yd., 1500 sq. ft., 100 x 100 lot, \$19,000. MI 8-2643.

3-BDRM: 1 2/3 baths, w/w carp., built-in range & oven, fenced bk. yd., nr. William Walker, patio, l'scaped, \$16,500. Cedar Hills. MI 4-7694.

4-BDRM: Bel Aire, 1 2/3 baths, corner lot, newly dec., \$15,900. 2055 S. E. Imperial dr. MI 4-4113 eves.

MOBILE HOME: '60 Fleetwood, 40 x 8, 1 bdrm., w/35 x 8 awning, \$3000. Ivy, ext. 208 or MI 8-4525 eves.

4-BDRM: 2 baths, hobby rm., dble. gar., fp, hdwd. flrs, ranch style, ½ acre, \$17,750. MI 4-8105.

3-BDRM: Bel Aire, 1 2/3 baths, ranch style, fp, din. & fam. rms., l'scaped, fenced bk. yd., \$14,950. w/FHA \$450 dn. MI 4-4207.

2-BDRM: new, contemporary, fp & patio, w/w carp., appliances, 1A w/view, \$10,250. MI 6-2454.

2-BDRM: Cedar Hills, tile kitch., util. rm., fenced bk. yd., patio, fp, buy \$3200 equity & assume 5% GI loan on \$7000 at \$80 mo. MI 4-7039.

3-BDRM: modern, west side, overlooks Tualatin Valley, 2½ baths, rec. rm., bsmt., 2 fp, 9 yrs. old, \$25,000. CY 2-2953.

3-BDRM: 2 baths, liv.-din-lge. fam. fp, built-ins, garb. disp., dble. l'scaped, Cedar Hills, \$17,900. S. W. Bowmont.

RIDES AVAILABLE

FROM 1609 SW 10TH: or vic., want riders to Beav. Pat Frey, 228-1846.

Trading Post

CARS FOR SALE

'61 ALPINE: Sunbeam, wire wheels, new w/w tires, r/h, excel. cond., \$1800. BE 4-0585 or JE 8-2333.

'56 CHEVROLET: Bel Aire, red & white, r/h, w/w tires, V-8 pwr glide, \$950. MI 4-0957.

'52 PLYMOUTH: 2-dr., stick, o/d, r/h, 6 tires, 2 snow, excel. cond., \$325. BE 5-5781 eves.

'55 CHEVROLET: convert., fair top, '58 Corvette 283 eng., stick, o/d, \$700. MI 4-4861.

'53 LINCOLN: convert., A-1 cond., \$400. AL 2-9681.

'55 FORD: Mainline, 6, good cond., r/h, \$400. MI 8-1246 days.

'61 STUDEBAKER: Hawk, 4-speed trans., bucket seats, leatherette interior, make offer. George Clark, 285-4401.

'48 CHEVROLET: pickup, w/canopy, 4-speed trans., \$195. Ext. 674 or MI 4-7519.

'61 CHEVROLET: Impala, 2-dr. hdtip., V-8, stick, clean, \$2095 or make offer. MI 4-8642.

'56 CHEVROLET: 2-dr. hdtip., V-8, stick, od, continental kit, \$750. MI 4-4667, no Sat. calls.

'57 VOLKSWAGEN: sunroof, red, radio, w/w tires, recent eng. o'haul, \$950. Dave, ext. 649 or MI 6-1947.

'62 FORD: convert., excel. cond., black w/white top, red interior, make offer. Gordon Coulter, swing shift.

'57 FORD: 2-dr. hdtip. V-8, Fordomatic, r/h, perf. cond., \$795. Dick, ext. 627 or MI 4-7-2501.

'57 PLYMOUTH: Savoy, 4-dr., r/h, o/d, \$1800. Ext. 7279 or MI 4-9701 eves.

'50 FORD: w/'56 V-8 eng., o/d, good tires, \$125. MI 8-6155.

'60 VOLKSWAGEN: excel. cond., \$1200. Dick, ext. 481 or MI 4-8143.

'57 CHEVROLET: sports coupe, equip. like Cadillac, 41,000 mi., \$1195. MI 4-0809 eves.

'59 BSA SPITFIRE: good cond., \$595. Doug Pagar, ext. 7474 or OL 6-5900.

'55 CHEVROLET: 2-dr., V-8 stick, r/h, new paint, best offer. 771-5649.

'50 AUSTIN: \$100 or trade for ham gear or what have you? MI 4-9879.

'61 FORD: 2-dr. Fairlane 500, r/h, o/d, V-8, \$1595 or make offer. Art, ext. 345.

'55 CHRYSLER: Windsor, 4-dr., auto., r/h, red & black, good shape, \$450 or make offer. Bob Keen, ext. 7108 or 232-0672.

RENTALS

1-BDRM: furn. duplex apt., men pref., Hillsboro, \$60. MI 8-5174.

1-2 BDRM: furn. or unfurn., brick court, North Interstate, \$82.50 to \$99.50, incl. heat. CH 4-1209 eves.

1-BDRM: apt., stove & refrig., all util. except elec., also laundry, S. E. Portland \$90. 232-1746 eves.

1-BDRM: apt. in Aloha, nice, clean; elderly lady or widow pref., avail. April 1, \$60. MI 4-6425.

1-BDRM: court apt., unfurn., lge., heat, water, garb. pd., \$80. 6615 S. W. Canyon Lane, CY 2-5980.

2-BDRM: house, hwd. flrs., attach. gar., 1/2-acre, new gas stove, nr. bus. 21760 S. W. Johnson, \$85. MI 4-7848.

2-BDRM: Hillsboro, nr. hi school, avail. now, \$85. MI 8-3733.

COURT APTS: furn. or unfurn., incl. heat, hot water & garb., \$90. Inquire at managers, 358 S. E. Tucker st., Beav.

MISC. FOR SALE

TRANSISTOR ELECTRONICS BOOK: by DeWitt & Rossoff, \$6. Agnes, ext. 7273.

'57 EVINRUDE OUTBOARD: all elec. w/controls & tank, one owner, excel. cond., \$275. CH 6-1867.

MOTOROLA CAR RADIO: 12-volt, push button, universal type, \$25. MI 4-0343.

RCA DISHWASHER: Whirlpool port., \$85. YU 5-3512.

REDWOOD PICNIC TABLE: 30 x 70, sep. benches, \$10. Walt Hansen, CH 4-7369.

YOUNGSTOWN DOUBLE SINK: 66-in. metal, porcelainized, w/all fittings, drawers & cabinets, \$99.50. Brad Webb, ext. 7110 or BE 5-3746.

BEAUTYREST MATTRESS: dble. size, long-boy, \$20. 654-3656.

ELECTRIC GUITAR: w/3-way pick-up case, fender amp, gretch flat wounds, \$90. CH 4-4517.

PICKUP BOX: '50 Chev., & rear fenders, fair cond., \$35 or trade for air cooled eng. Lillian Nofziger, MI 4-3902.

TV SET/STAND: Zenith, '58 model, works beautifully, \$75. Jerry, ext. 7159 or MI 4-2559.

RADIO/PHONO CONSOLE: am-fm, short wave, \$75. 282-5345.

'60 SKI BOAT: 13 1/2-ft., w/tarp & water skis, best offer. Peggy, ext. 7316.

GAS RANGE: \$10; Westinghouse dryer, \$15; new Philippine mah. doors, \$4 ea. Madeline Bose, ext. 7583 or EL 7-9073.

AIR CONDITIONER / HEATER: '55 Ford custom, brand new, \$98, units for \$25. Jim, ext. 655 swing.

GIBSON TRACTOR: w/dozer blade, plow, disc & Fresno, \$350. Henry, ext. 7276.

CLEARANCE SALE: gar. type, misc. fishing gear, tools, luggage, bedframes, golf clubs, make offer. Vurda, MI 4-8069.

CAB-OVER CAMPER: new, 8-ft., fully equipped, \$1000, see at bldg. 74. Ray, ext. 407.

SCRIPT TYPEWRITER: Olympia port., less than 1 yr. old, \$140 new, sell \$97.50. MI 4-1775 aft. 4.

14-FT. RUNABOUT: 35 hp eng., trailer, 4 jackets, wooden frame w/glassed top & bottom. Betty Thomas, 223-9460 aft. 4.

POODLES: 6 wks., brown male, \$75; silver female, \$85, AKC reg. CY 2-6026.

WIRING MATERIAL: 100 amp. entrance switch, range & r circuits, 1 1/4-in. entrance head, conduit meter base & wire, \$15 for all. MI 8-5965.

BLUE POINT SIAMESE: female showcat, excel. color, points & tapered tail, won as a kitten, \$35. MI 4-4952.

PORTABLE TYPEWRITER: Royal "quietwriter", yellow, top cond., \$75. EL 7-2707.

WOOL BEIGE RUG: 13 x 17, w/pad & 13-ft. hall runner, \$150 or best offer. MI 6-1472.

KENMORE WASHER: \$5. Donn, ext. 405 or CY 2-4285.

'58 PACKARD BELL TV: 21-in. table model w/legs, good cond., \$50. Dan Coy, ext. 7695 or 232-5590.

WATER SOFTENER: Rheem, \$75. EL 7-9566.

PISTOL: new .32 auto., Breta, \$28. Monty, ext. 646 or JA 7-2135.

P14 GLASS BOAT: 14-ft., steer., uphol. seats, Holsclaw trailer, life jackets, extinguisher, \$425. Dennis, ext. 7633.

PICKUP GRILLE: for '40 Chev., \$10; pre '47 Chev 4-speed non-synchro. transmission w/PTO. MI 4-7146 eves.

MISC. FOR SALE

8MM PROJECTOR: new, \$20. Larry, ext. 7222 or MI 6-1739.

TORO WHIRLWIND LAWNMOWER: 22-in., self-propelled, 1 yr. old, \$140 new, sell for \$85. Ext. 687 or NE 6-6996.

CLARINET: good, used, w/case & one reed, \$34.50. Gene Sakrisson, MI 4-1541.

GARDENERS ATTENTION: 1 ea., Planet Jr. seeder & Planet Jr. cultivator, w/attach., open to offers. Jim Hunt, ext. 536 or CY 2-3425.

AUTOMATIC WASHER: Frigidaire, works perf., looks like new, \$25. Bob Fields, ext. 675.

TABLE MODEL TV: RCA, 21-in., w/ matching stand, new pic. tube, excel. cond., \$50. CH 6-1025 eves.

CUSTOM-MADE DRAPES: 2 pr., salt & pepper, 81 x 66 in. panels, \$25 pr.; baby furniture, \$5 & \$10. PR 1-2750.

COFFEE TABLE: solid maple, 4-ft. long, \$50. Frances, ext. 7148.

POWER AMPLIFIER: dual channel, \$45. Wayne, ext. 248 S.

FILM EDITOR: 8mm, \$5. Dean, ext. 325 or MI 4-8996.

GELDING: 4 yr. old, brown & white, \$250. MI 6-2405 or MI 4-9891.

GLASS BOAT: 14-ft., windshield, top & side curtains, 25 hp Johnson motor & controls, tilt trailer, \$400, MI 4-4797 after 5.

REFRIGERATOR: 11.1 cu. ft., w/100 lb. freezer in top A-1 cond., \$65. Russ, ext. 575 or CH 4-8094.

MAHOG. KITCHEN TABLE: & chairs, w/match. buffet, good cond., \$30. Verle Guffy, OL 4-1889.

HEATHWAY SCUBA: tank & 2-hose regulator, & other equip., \$65. Fred Smith, ext. 7110 swing.

HAM GEAR: Apache TX-1 trans., \$240; Morrow trans. MB-560 incl. pwr. supply, \$125; wiring comparable to Tek's. John Bookout, ext. 411 or BE 2-1419.

HAM GEAR: RME 4300 amateur receiver, \$110; Elmac AF-67 trans. w/12V DC & 115V AC supplies, \$115. Tom Luther, ext. 411 or PR 1-8920.

DACHSHUND: AKC reg., wormed, puppy shots, \$30 ea. MI 4-7442.

BELL AMP: 50 watt, sold new for \$250, trade for reasonable stereo amp. Harold Wilson, ext. 7474 or 236-7834.

ROLLER SKATES: men's Douglas Snyder professionals, sizes 7 & 8, \$20 pr. EL 7-2429 aft. 5.

GAS HEATER: circulating, 70,000 BTU, \$50. BE 6-3035.

HEADBOARD: for king size bed, \$15; Westinghouse stove & refrig., over 10 yrs. old, \$20 ea. Ext. 7561.

GIBSON RANGE: excel. cond., dble. oven, minute timer, auto. oven timer, \$35. BE 2-1559.

POLE LAMP: black & brass, 3 lights, \$8. MI 8-3787.

PRINTING PRESS: 6 1/2 x 10 in., side lever, on metal stand, \$125. Ext. 7623 or CY 2-1643.

PHILCO ELECTRIC RANGE: \$50 or trade for 2-wheel trailer or rototiller; give or take difference. Florence Dye, page Plant 2 swing or MI 4-2629 days.

WANTED

16-FT. BOAT: 35 hp, motor trailer. Cleo Binker, MI 8-4519.

POWER MOWER: pref. reel, but will cons. any in good cond. MI 4-9003 aft. 5.

FOUR BARREL CARBURETOR: & manifold, '61-63 Pontiac. Ed Cottrell, MI 6-2975.

TENNIS RACQUETS: 2, used, good cond. Joan, ext. 270.

WANTED

ADDING MACHINE: 10-button, in operation, \$15 or less. MI 4-4732 aft. 7.

WHITE HEN DOVE: will buy or trade male. Lila Baker, ext. 689.

ELECTRONIC KEY MANUAL: ELDICO EE-3A & BC-610 conversion data, for copy purposes. Don Tucker, ext. 442 or MI 6-1765.

ROOMMATE: girl to share Portland apt. Carol, ext. 216 bef. 3:30 p.m.

PHONE NUMBER: of party who answered ad for cocker. NE 6-2356.

2-HORSE TRAILER: w/tandem axle. Joyce Meeuwse, swing, or EL 7-2994.

CAR: \$500 cash for '55 Chev. or '56 Ford, top cond. Jim Scott, ext. 7695 or MI 4-0931.

CHILD CARE

HILLSBORO AREA: high school girls, summer, experienced. MI 8-2395.

CHILD CARE: my home, near Tek. MI 4-6766.

RIDES WANTED

FROM HILLSBORO: to Sunset plant, 7:30 to 4:00. Ed Mitchell, ext. 271 S or MI 8-5113.

FROM 30TH & NE AINSWORTH: 228-3283.

FOUND

ONE GOLD EARRING: for pierced ears, found Feb. 27 at Office Ladies' dinner. Barbara, ext. 7660.

FREE

HOUSE DOG: part poodle, male, Ext. 395 aft. 3:00 p.m.

Statistics

BORN:

To Ken and Janice Waldo (Assembly, Plant 3), a daughter, Michele, 7 lbs. 2 oz., February 21.

To George and Glinda Heimuller (Shop Prepack), a daughter, LeAnn Adele 7 lbs. 7 oz., February 19.

To Leonard and Georgene Bernhardt (Electrochemical), a daughter, Darnette Gayle, 8 lbs. 3 oz., February 23.

To Larry and Sandy McCoy (Mechanical Instrument Design), a son, Michael Scott, 7 lbs. 9 oz., March 1.

To Art and Peggy Hayward (Unit Wiring, Plant 3), a daughter, Deberah Kaye, 5 lbs. 15 oz., February 19.

To Dick and Marlys Montag (Plant 2 manager), a son, Jeffrey William, 7 lbs. 13 oz., February 28.

To John and Virginia Zaiger, Jr. (Unit Wiring, Plant 2), a daughter, Lisa, 7 lbs. 9 oz.

To Lorne and Evelyn Hofeld (Switch Design), a son, Lorne Edward, February 7.

To Howard and Margie Moe (Assembly, Plant 2), a daughter, Eiricka Charlene, 9 lbs., March 6.

To Tim and Cynthia Harms (Finals, Plant 2), a son, Michael David, 7 lbs. 5 oz., February 24.

MARRIED:

Marcelle Buel (Capacitors Component Engineering) and Arthur Renton, February 16.

Johnnie Rae Armstrong (Unit Wiring, Plant 1) and Richard Carey, March 2.

Sharyl Johnson (Unit Wiring, Plant 3) and Harlan Fischer, February 19.

Beaver Baseball Discount Offered

Five hundred seats have been set aside in a special section for Tek Beaver Baseball boosters at the Kid's Opener, April 27, 2 p.m., at Multnomah stadium in Portland.

One-dollar tickets, good for adult admission to the game or for two children's admissions at 50 cents, are on sale at Tek reception desks until Friday April 5. Children's admission (12 and under) is 50 cents in the grandstand.

Until April 5, the general admission tickets (worth \$1.50) can also be purchased in books of ten for \$10. The ticket admits you to any area of the grandstand except box seats during the 1963 season. With an additional 50 cents, it can be exchanged for a box seat ticket. This advance ticket offer is good only until April 5, but tickets are good for the entire season at Multnomah stadium.

Except for Tek Day at the Ball Park, April 27, the tickets are available only in books of ten for \$10. For additional information call extension 401.

Bowlers Elect Officers

One hundred and forty votes from league bowlers last week picked the following new officers for the Tek Bowling club:

Bill Lukens (Manufacturing Staff Engineering), president; Bob Pickett (Plant 3 Test), vice-president; Kay Bartmess (Capacitors Pilot Production), re-elected secretary; Wilma Stapleton (Assembly, Plant 1), treasurer.

Outgoing president Ted Hiatt (Capacitors GM) said several volunteer committees of bowlers have started to work on new ideas and projects for the Tek Bowling club.

Calendar

Chess club—3:30 Tuesday in Building 45 cafeteria.

Hockey—9:00 Tuesday at Memorial coliseum. White vs. Yellow. Free admission; enter through lower coliseum doors.

Bridge club—7:30 Wednesday in Building 45 cafeteria.

Gun club shoot—7:30 tonight at Hind's warehouse.

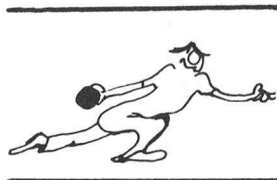
Rock club—7:30 Tuesday at OMSI.

Bridge club tournament—7:30 Friday at Aloha Odd Fellows hall. \$2.50 per couple, Monday deadline for entries. **Softball organizational meeting**—4:00 Tuesday in Plant 1 conference room.

Hockey—9:00 Monday at Memorial coliseum. Tek vs. Blue. 9:00 Tuesday at Memorial coliseum. Yellow vs. Black.



Happy
St. Patrick's Day
Sunday, March 17



Sports



Hockey

Tek Hockey club has three intramural teams which scrimmage weekly at Memorial coliseum: White, yellow and black. The best players from the three teams form a Tektronix team which plays regularly in the three-team city hockey league.

Hockey standings for Tek teams now are:

Team	W	L	T	Points
White	2	0	0	4
Yellow	1	1	0	2
Black	0	2	0	0
City League	0	2	0	0

Latest results were:

March 4: Blue (city league) 7, Tek 2

March 5: White 7, Yellow 5

March 6: Yellow 3, Black 2



JUMP ROPE CONTEST is held every spring by Plant 2 Finals and Plant 2 Unit Wiring. Participants (l. to r.) are Arne Gjerner, Sheri Hosea, Don Nordone

LITTLE RED SPORTS CAR shared John Gates' (Instrument Design) parking space at the Sunset lot last Friday. The teenie-weenie auto (with Kansas plates) was "pedaled" to work by John Kobbe (Instrument Engineering staff). The only problem this double parking might create would be if someone should trip over the car.

Bowling

March 4-8

Bowling honors for the week in Tek leagues went to:

Scopettes: Pat Wootten (Capacitors) 203; Carolyn Brejcha (IMPS Eng. Cont.) 511. Doris Gibbens (Plant 2 manager's secretary) rolled a 200 game in a 510 series; Martha Gibbs had a 506.

Tek Bugs: Ellen Holmes (Plant 2 Planning) 188; Reta Hiatt 506. Joel Duke (Modifications) 211; Burt Eberly (Manufacturing Tooling) 580.

Tek Late Winter Mixed: Lois Ferrell (Plant 3 Assembly) 188, 484. Bob Tracy (Plant 3 Test GM) 204, 534.

Tek Women's: Judy Hazel (Plant 1 Assembly) 208, 497.

Tek Men's: Terry Brooks (CMI) 213; Dean Christiansen (Plant 3 Test) 194, 207, 198, 599. Bob Wruble (Field Maintenance Support) staircased: 141, 142, 143.

Teks in the News

Ken King (Manufacturing Quality Assurance), **John Taylor** (Plant 1 manager), **Hugo Pankow** (Plant 3 manager), **Ken Hoggatt** (Capacitors department manager), **Ralph Hoffmeister** (Test-Final department manager) and **Dwayne Wolfe** (IMQA manager) attended the Western Regional Quality Control conference in Las Vegas, February 21 and 22.

Robert A. Johnson is a new technician in the Research Semiconductor Devices department working for Project Engineer **John Maticich**.

Aren't You Glad You Dial 9?

(Don't you wish everybody did?)

Plastics Engineering department had a problem with old phone number—646. Employees would dial Mitchell 6 prefix without dialing 9 first for the outside dial tone. Before the dialer could finish dialing his MI 6 number, he'd get Plastics Engineering or a busy signal.

So Plastics Engineering changed its extension to 7646, but they are still receiving a great many mis-dialed calls, reports Kay Feightner of the Plastics department office.

To give the fellows in Plastics Engineering a break, be certain to dial 9 for an outside dial tone, and remember that Plastics Engineering extension is **7646**.

TRAFFIC COURTESY

Residents of the area north of Jenkins road have asked again that Tektronix employees not use residential streets as through streets. In addition to the amount of traffic they particularly object to the speed at which vehicles are driven. Many Tek employees also live there, which is the reason some cars must go that way, but this does not mean traffic heading for Walker road and other points north, east and west of Jenkins road should drive through.

Time saved by those using this detour rather than staying on Ecole street may be another reason for the slowdown of traffic out of Ecole and Walker. Ultimately it is a problem only individual consideration and neighborly attitudes can correct. No one wants full time police surveillance.

John Wallen (Human Relations) spoke to the Portland Psychological Association meeting last Thursday at the Ione Plaza. Wednesday, as part of a program sponsored by the Mental Health Association of Oregon, he talked at Sunset high school. His topic: Family Fights—Good and Bad. On March 1, **John R. Jensen** (Military Products Engineering) spoke to approximately 350 students at Dale Ickes junior high school in Milwaukie. John was invited to talk about customs and schools in his native country, Switzerland.