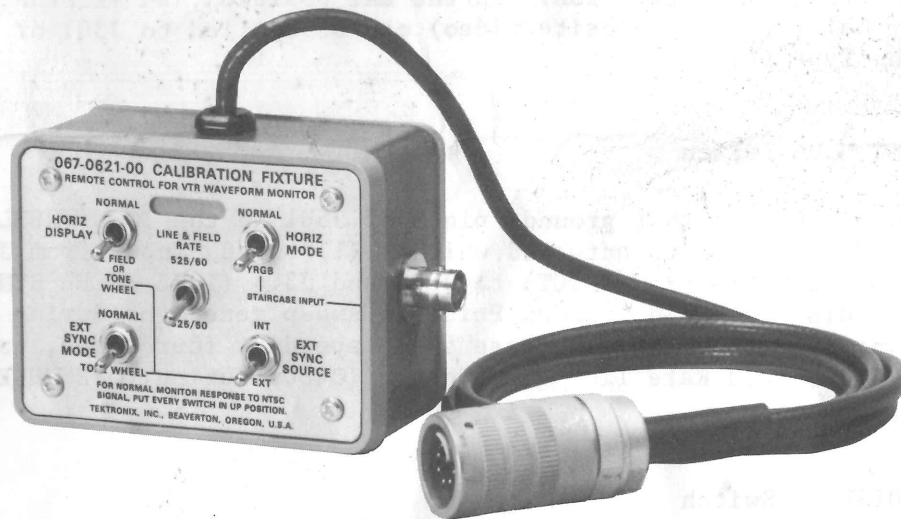


067-0621-00 CALIBRATION FIXTURE

Remote Control, VTR



The 067-0621-00 Remote Control Fixture is designed to provide remote selection of certain operating modes of Type 529 Waveform Monitors that have been modified for Video Tape Recorder (VTR) operation. The Remote Control Fixture attaches to J501 on the Type 529 rear panel. By operating the appropriate switches, certain relays inside the Waveform Monitor can be activated to calibrate the Type 529 for recording a variety of non-TV waveforms. A staircase input connector is also provided for applying a YRGB signal to J501.

Function of Switches (See schematic diagram)

EXT SYNC SOURCE Switch

Toggle switch that grounds pin J of J501 in the INT position for internal sync operation. In the EXT position, an external sync signal (e. g., composite video) can be applied to J301 or J302 on the Type 529.

EXT SYNC MODE Switch

Toggle switch that grounds pin A of J501 in the TONE WHEEL position. K437 and K480 are actuated which: (1) switch input from J301 and J302 (EXT NEG SYNC INPUT) to J303 and J304 (TONE WHEEL SYNC INPUT), (2) disable Field 1 Index Pulse in sweep generator during Tone Wheel Sync operation, (3) increase sweep speed by four times, and (4) open 625/50 Field Rate Timing capacitor (C480) during TONE WHEEL Sync operation.

HORIZ DISPLAY Switch

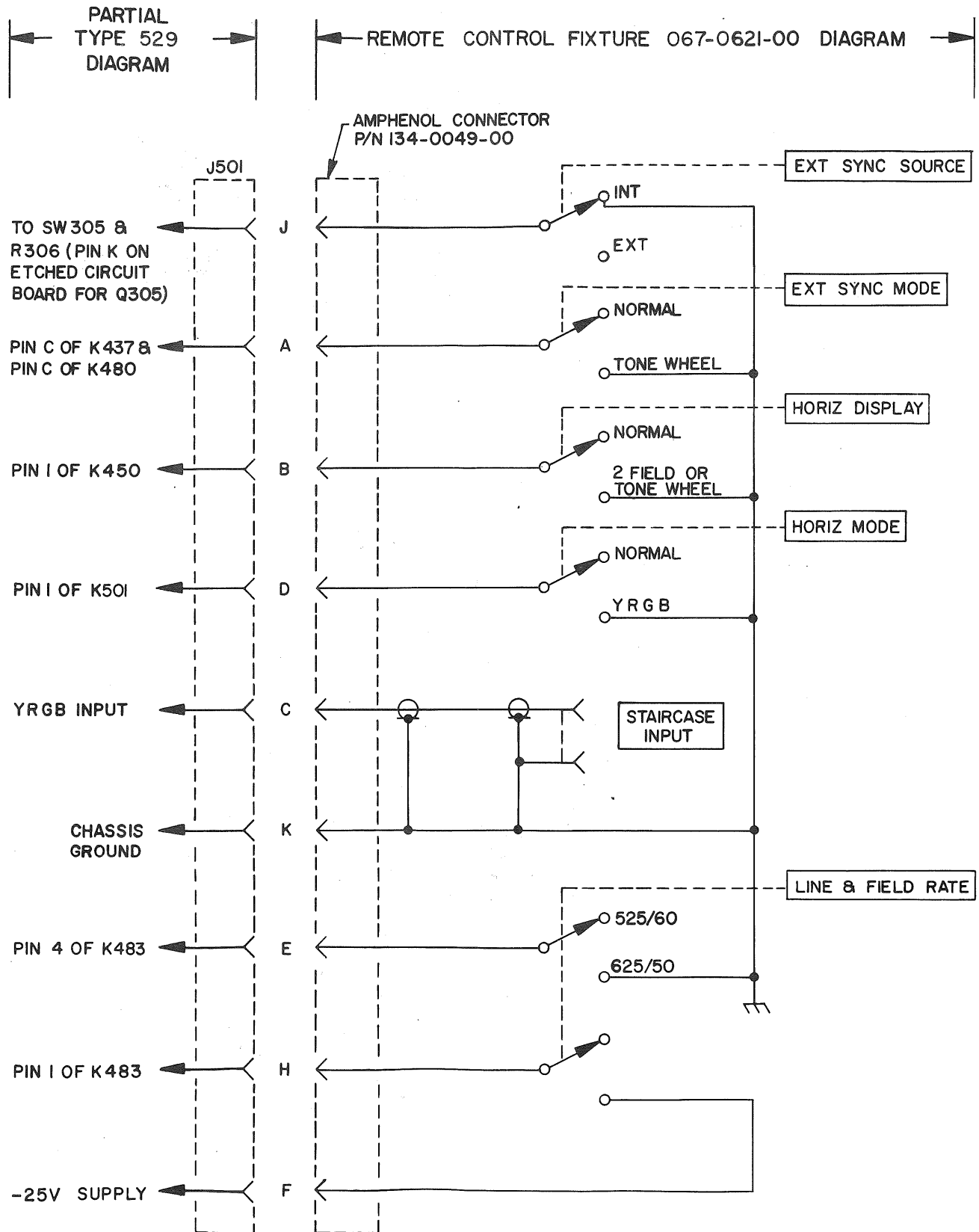
Toggle switch that grounds pin B of J501 in the 2 FIELD OR TONE WHEEL position. K450 in the Type 529 is actuated which overrides any position of the Horizontal Display switch providing 2 Field operation only.

HORIZ MODE Switch

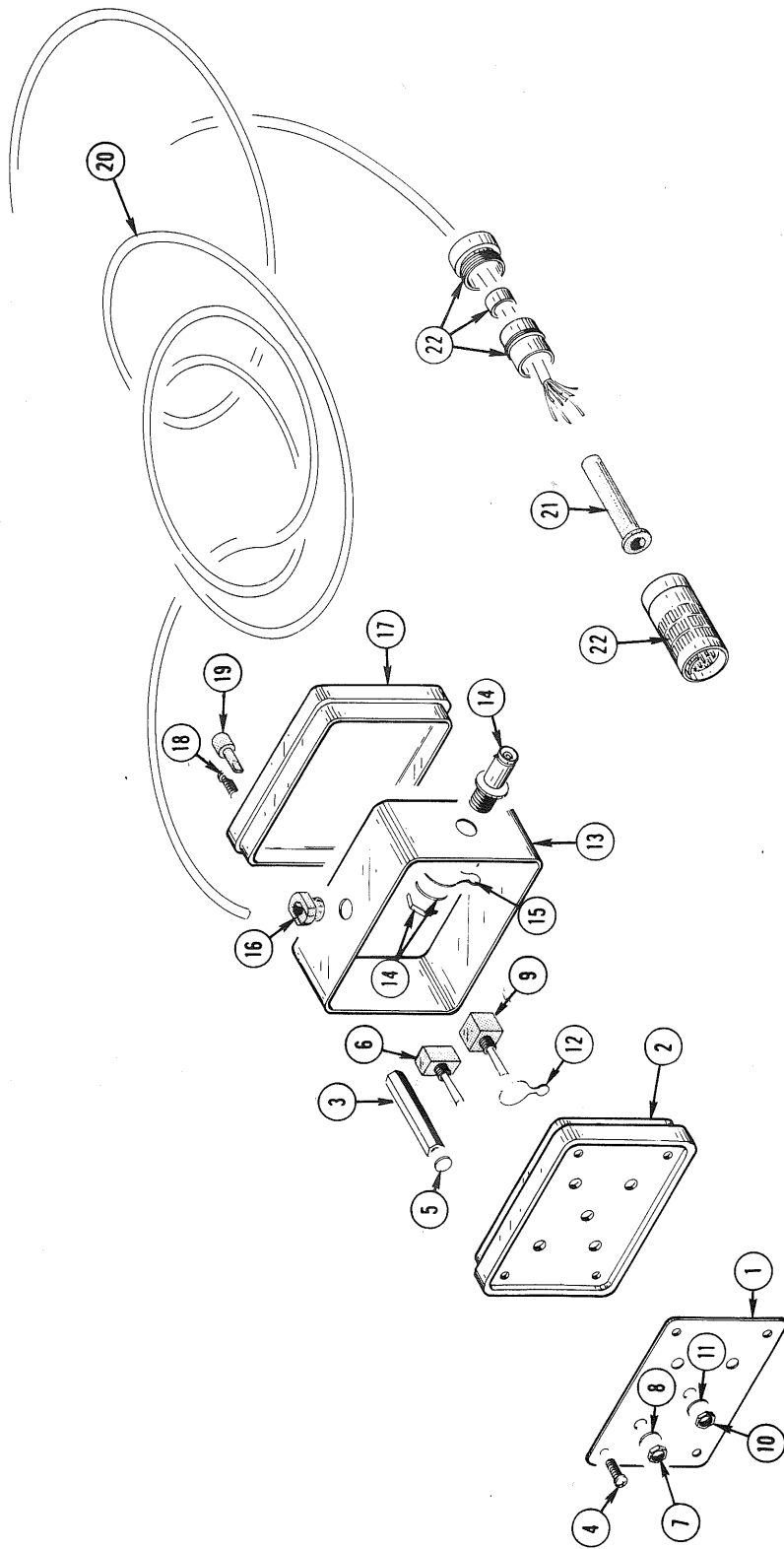
Toggle switch that grounds pin D of J501 in the YRGB position. K501 in the Type 529 is actuated which reduces the Horizontal Amplifier gain by a factor of 4. Thus, the trace will take 4 sweeps to cross the CRT, enabling the 4-color YRGB signal to be viewed on one CRT display.

LINE & FIELD RATE Switch

Toggle switch that grounds pin E, and applies -25 V from pin F to pin H of J501 in the 625/50 position. K483 is actuated which changes the sweep timing components from 525/60 to 625/50 line and field rate operation.



EXPLODED



MECHANICAL PARTS LIST

Fig. & Index No.	Tektronix Part No.	Serial/Model No. Eff	No. Disc	Q					Description	
				y	1	2	3	4		5
	067-0621-00			1						CALIBRATION FIXTURE, Remote Control For VTR
	- - - - -			-						Waveform Monitor
	- - - - -			-						calibration fixture includes:
1	333-1331-00			1						PANEL, front
2	200-0276-07			1						SUBPANEL, front
3	384-0616-00			4						ROD, spacer, 1.37 inches long
	- - - - -			-						mounting hardware for each: (not included
	- - - - -			-						w/rod)
4	211-0097-00			1						SCREW, 4-40 x 0.312 inch, PHS
5	210-0004-00			1						WASHER, lock, internal, 0.12 ID x
	- - - - -			-						0.26 inch OD
6	260-0613-00			1						SWITCH, toggle--HORIZ DISPLAY
	260-0613-00			1						SWITCH, toggle--HORIZ MODE
	260-0613-00			1						SWITCH, toggle--EXT SYNC MODE
	260-0613-00			1						SWITCH, toggle--EXT SYNC SOURCE
	- - - - -			-						mounting hardware: (not included w/switch)
7	210-0562-00			1						NUT, hex., 0.25-20 x 0.312 inch
8	210-0940-00			1						WASHER, flat, 0.25 ID x 0.375 inch OD
9	260-0834-00			1						SWITCH, toggle--LINE & FIELD RATE
	- - - - -			-						mounting hardware: (not included w/switch)
10	210-0562-00			1						NUT, hex., 0.25-20 x 0.312 inch
11	210-0940-00			1						WASHER, flat, 0.25 ID x 0.375 inch OD
12	210-0223-00			1						LUG, solder, 0.25 inch
13	380-0205-00			1						HOUSING, wrap-around
14	131-0126-00			1						CONNECTOR, coaxial, 1 contact, BNC
	- - - - -			-						mounting hardware: (not included w/
	- - - - -			-						connector)
15	210-0241-00			1						LUG, solder, 0.50 inch
16	358-0161-00			1						BUSHING, strain relief
17	200-0276-08			1						SUBPANEL, rear
	- - - - -			-						mounting hardware: (not included w/
	- - - - -			-						subpanel)
18	211-0097-00			4						SCREW, 4-40 x 0.312 inch, PHS
19	348-0089-00			4						CUSHION, plastic
20	175-1046-00			ft						CABLE ASSEMBLY, special purpose, 51 inches
21	200-0779-00			1						CABLE NIPPLE, plastic
22	134-0049-00			1						PLUG, 9 pin, male