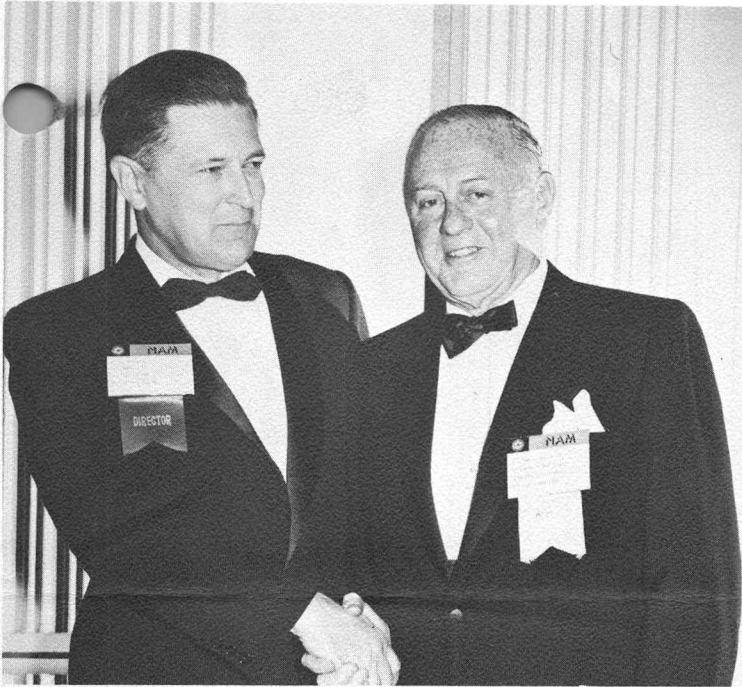


A new NAM director . . .



CONGRATULATIONS are received by Jack Murdock (left), chairman of Tektronix board of directors, on his election as a new director of the National Association of Manufacturers from NAM Chairman William T. Brady. Scene was the directors' dinner at the 68th Annual Congress of American Industry at the Waldorf-Astoria hotel in New York, December 4-6. Mr. Brady is also chairman of Corn Products Company, New York, N.Y.

tekweek

Tektronix, Inc., Beaverton, Ore., Dec. 13, 1963, vol. 4, no. 32

Many things 'make spirits bright' at Tek

*Deck the plants with boughs of holly
Fa-la-la-la-la-la-la-la-la-la
Profit-share paychecks make us jolly
Fa-la-la-la-la-la-la-la-la-la*

A lot of Christmas plans are in the minds of employees as Decem-

Visitors to Europe tell of Guernsey construction

Earl Wantland, International Manufacturing manager, and Roger Haight, International Manufacturing Support, returned last week from visits to Tektronix Guernsey Ltd. and Tektronix Holland N.V. They report that construction will begin soon on an 8800-square-foot addition to the La Villiaze plant, adjoining Guernsey airport. It is scheduled for completion in 1964, and will house part of the Tektronix Guernsey Ltd. manufacturing unit presently in the Victoria Avenue plant.

The space vacated by Tek Guernsey will be remodeled for use as a warehouse by Tektronix Ltd.

ber 25 approaches—too quickly. Departments and groups are reserving restaurants, halls and homes for their annual get-togethers. Potluck and smorgasbords here at work will be frequent next week.

One cannot help but hum or whistle a familiar carol that sticks in his mind after it comes over the PA system. A little holly, a bit of tinsel or a miniature tree reminds him that he must purchase a Christmas tree soon as he gets a chance; the kids have been pestering him for three weeks now. So much to do . . .

And there is much to be done for others, for those who might not have a Christmas tree, or Christmas dinner, or presents for their kids to shake and rattle and guess what's in 'em. So Tektronix employees, in the true spirit of the season, are doing their best to help those who are not as fortunate as they are.

More planning: Careful calculation is needed to "divvy up" the profit-share paycheck employees received this week. So much for the wife's present, so much for the savings account, so much for that

East and west 'big boards' to list Tektronix shares

Tektronix' application for listing of its shares on both the New York Stock Exchange and the Pacific Coast Stock Exchange was approved December 5. Tentatively January 10 has been set as the date for listing on both exchanges.

The Pacific Coast Stock Exchange operates both in San Francisco and Los Angeles, and includes among its members many West Coast dealers who are not members of the New York Stock Exchange.

Don Ellis, treasurer, explained that Tek's listing on the New York Stock Exchange will permit shareholders and employees to read the prices at which Tek shares are traded in all major

daily newspapers throughout the nation and in many overseas capitals. This will be especially beneficial to our 39 field offices and our European subsidiaries.

Presently, Tek shares are traded "over-the-counter". Since Tek shares appeared on the open market September 11, all three Portland dailies have reported bid and asked prices indicating the range in which an investor could have sold (bid) or bought (asked) Tek shares. The Wall Street Journal has also reported these price ranges in its "Recent Securities" box.

(The scope and operation of the "over-the-counter" market was explained in a Tekweek article September 27.)

Appearing on the Pacific Coast Stock Exchange will make it more attractive for local dealers who are not members of the New York Stock Exchange to deal in Tek shares.

Unlike the New York Stock Exchange, the Pacific Coast Stock Exchange listing is not generally published in daily newspapers although the Wall Street Journal Pacific Coast edition, edited in San Francisco, does have the listing each business day.

A factual history of the New York Stock Exchange, how it came about and how it operates today, will appear in a forthcoming issue of Tek Talk.

In case of snow 'play it by ear'

If it snows, there are no instructions to employees this winter as to who to call, when to call, or when to listen to newscasts.

Best advice that Dick Pooley (Facilities staff) and Otto Zach (Manufacturing administrative assistant) can give is: DON'T CALL ANYBODY. COME TO WORK IF YOU CAN MAKE IT.

Otto pointed out that even if the snow was "chin-high to a tall giraffe," there always will be some employees showing up for work. "That's the kind of place Tektronix is," he noted. "And Tek will always provide work for those who do get here."

With the aid of complete emergency operating procedures, emergency crews and adequate snow removal equipment, the Facilities department, Dick said, can have Tektronix roadways cleared, sanded and ready for traffic. Buildings will be heated and all machinery in operation.

At any rate, Dick and Otto both agree that snow will not keep Tektronix from opening its doors.

So if you wake up one morning soon and discover a "winter wonderland" outdoors, you don't have to call anybody. Just don those long undies, go crawl under the car and start putting on those (#!!&½?!½) chains.

New Tek road dedicated to famous circuit man

The name Alan Blumlein (pronounced bloom-line) has been chosen for a new Tektronix industrial park road.

The road will run south from Jenkins road and intersect Karl Braun drive near the proposed Technical Center.

Alan Dower Blumlein (1904-1942) was killed, along with a group of other research scientists, when an RAF bomber, on a test flight, crashed in Britain. He is regarded as one of electronics' most brilliant circuit engineers; he devised and pressed the first single-groove stereo disc and proposed the present universally-adopted 45/45 stereo recording system.

extra gift the kids have been asking for—but don't deserve—but are getting anyway.

And even more planning: How to squeeze everything that has to be done into the short time before Christmas. The unpaid shutdown day, Monday, December 23, will help; and the paid shutdown day Tuesday, December 24, will be even better. Tek's will work Saturday of that week, December 28.

So Tektronix employees, as well as all other American citizens, are caught up in the hustle-bustle of pre-Yule preparation.

Foundation talk today

"Mossbauer Effect" is the title of a lecture to be given this afternoon at Portland State college by a Tektronix Foundation-sponsored lecturer, Prof. Hans Frauenfelder, professor of physics at the University of Illinois.

He will talk in Room 171 of State hall at 4 p.m. today. Yesterday Prof. Frauenfelder spoke at University of Oregon in Eugene.

Australian FE praises 564's stamina

The October 11 issue of Tekweek included a report from Guernsey of a plane crash, from which a Type 647 environmentalized oscilloscope emerged in operating condition. We now hear from "down under" that the Type 564 storage scope is also a pretty rugged instrument.

Al Hannmann, manager of Tek-

tronix Australia Pty. Limited in Sydney, recently sent this memo to Scotty Pyle, International Marketing staff:

"Am not trying to steal John Thompson's thunder after his test of the 647 but after putting about 1500 miles on some of the toughest roads I've seen in a long time — something has to be said for

the 564. It was bounced over washboard roads — suffered the shock at sixty when the road dropped about a foot and went from asphalt to dirt, exposed to high humidity and temperature—all without a problem.

"Must admit being ready to tune for maximum smoke when I switched on at the next demo but it worked like a charm. The only protection it had was the springs of the car and a wrapping of sponge rubber carpet underfelt around it.

"Think it ought to put the 564 in the class of one not easily 'shook up'."

The 647 is built to withstand exceptional operating and storage conditions. The 564 does not have any special environmental specifications.

Job Postings

Tektronix employees should contact Joyce Anderson, ext. 7627 (8-7627 from Sunset) stat. 95/010, to apply for positions listed in JOB POSTINGS.

STENOGRAPHER: Woman to work day shift for the Office Service group of the Plant Supporting Services department of Central Staff Services (J.P. no. 3579).

FUNCTIONS: Type letters, invoices, etc.; take some shorthand; file; operate duplicating machines.

QUALIFICATIONS: Typing 50-60 wpm; shorthand 80-100 wpm; general knowledge of numbers helpful; previous experience helpful but not required.

SECRETARY: Woman to work day shift for the Factory Repair Center of the Field Maintenance Support department of US Marketing (J.P. no. 4157).

FUNCTIONS: Type job orders and repair estimates; price, type and record repair parts lists; record personnel information; compile weekly and monthly repair and personnel reports; file info releases, completed repair files, etc.; receive and send TWX messages; take dictation; type correspondence; initiate some correspondence.

QUALIFICATIONS: Typing 50-60 wpm; shorthand 100 wpm; grammatical skill; good command of English language; accuracy; attention to detail; ability to work with minimum supervision.

MESSENGER & CLERK: Woman to work day shift for the Manufacturing Staff of CRT (J.P. no. 5769).

FUNCTIONS: Pickup and deliver mail in Bldg. 46; relieve receptionist for lunch and coffee breaks; spend balance of time assisting CRT Planning Accounting staff—calculator operation, adding machine, typing, posting, general office work.

QUALIFICATIONS: Previous messenger training helpful; aptitude for working with numbers, adding machine and calculator operation, filing and general office skills; typing.

RECORDS CLERK: Woman to work day shift for the Manufacturing Materials group of the Manufacturing Planning department of Instrument Manufacturing (J.P. no. 982).

FUNCTIONS: Coordinate and research Customer Service, International and special orders; perform secretarial duties for Materials personnel; compile various reports and provide information to requesting areas; operate interplant teletype.

QUALIFICATIONS: Accurate typing; ability to organize work load, to make decisions and to communicate well over the telephone.

CERAMIC TECHNICIAN: Man to work day shift for the Engineering group of the Ceramic department of Fabrication & Molding (J.P. no. 4967).

FUNCTIONS: Perform laboratory tests; formulate ceramic compositions; make out data sheets and records; operate equipment to make proto-types; use laboratory equipment to fabricate test and preproduction parts; schedule and fire ceramic test kilns.

QUALIFICATIONS: Two years of college or equivalent in experience (preferably in chemistry and mathematics); mechanical aptitude.

TEKWEK is published every Friday for Tektronix employees by the Communications department, 74/298, ext. 405, in cooperation with the Printing and Photography departments. Staff: Dick Koe, editorial manager; Carol VanderZanden, editor-writer; Jane Martin, staff writer; Becky Weber, staff writer; Charlotte Sneathen, Trading Post; Graphics Arts group, layout & pasteup.

STAFF OPERATIONS ACCOUNTANT: Man to work day shift for the Cost Services department of Finance (J.P. no. 3263).

FUNCTIONS: Serve as liaison between Finance and Manufacturing, as well as some non-manufacturing areas; assist and advise plant accountants regarding financial matters and keep them informed of procedural changes; review statements and reports prepared by plant accountants, review source documents and accounting activity reports; perform assigned month-end closing functions; prepare various month-end reports and analyze significant changes; assume responsibility for accurate re-recording of charges in assigned areas; prepare and maintain accounting operating procedures.

QUALIFICATIONS: College degree in business administration, including course in cost-accounting, with some experience in cost-accounting work. Experience may be acceptable in lieu of educational requirement.

MESSENGER: Woman to work day shift for the Messenger Service of the Plant Supporting Services group of Central Staff Services (J.P. no. 3578).

FUNCTIONS: Pick up and deliver interplant mail; post bulletin boards; operate duplicating machines; type.

QUALIFICATIONS: Average typing; clerical experience helpful.

CLERK-TYPIST: Woman to work day shift for the Systems and Specials group of the Pre-Production Engineering department of Engineering (J.P. no. 7000).

FUNCTIONS: Type communications, forms and reports; match incoming mail with files; answer telephone.

QUALIFICATIONS: Accuracy; ability to perform detailed work including numerical typing; ability to organize material and work without close supervision.

TOOL ENGINEER: Man to work day shift for the Mechanical Engineering group of the Production Engineering department of F & M (J.P. no. 6052).

FUNCTIONS: Design tooling, jigs, fixtures and other machines used to produce parts and assemblies in Plastics, Ceramics, Metal Fabrication, Metal Finishing and Electrochem; design tooling for other departments outside F & M.

QUALIFICATIONS: Good mechanical background; familiarity with machine shop practices; capable of producing good drafting work; must understand dimensioning practices.

TYPIST-CLERK: Woman to work day shift for the MRO Purchasing department of Materials Management (J. P. no. 1942).

FUNCTIONS: Type; file; answer telephone; post; match invoices to purchase orders.

QUALIFICATIONS: Typing; filing.

ENGINEERING WRITER: Man to work day shift for the Technical Writing group of the Instrument Manufacturing Production Services department of Instrument Manufacturing (J. P. no. 5302).

FUNCTIONS: Write text material for instrument instruction manuals and other instructional material as required; take waveform photographs and design artwork required to illustrate text material.

Don Kepler buys copter 'for fun'



HEARD PUT-PUT-PUTTING over Beaverton recently? Don Kepler (Personnel Services manager) was flying his new Hughes helicopter purchased last week.

Don Kepler, Personnel Services manager, has become Tektronix' first helicopter owner. Last week he purchased a Hughes model 269A copter from Columbia Helicopter Sales Co. on Swan Island, where the craft is stored until Don logs in the 40 hours necessary to get his license.

Actually Don is a long-time fixed-wing pilot, having obtained his private license in 1928 and a Canadian commercial license in 1929. However, he says learning to fly a helicopter is more difficult, because he has to "unlearn" many of his old habits.

The chopper carries only the pilot and one additional brave soul as passenger. Don claims it's only for fun and plans no business travel with it. His ultimate goal is to get his hands steady enough on the stick to land the chopper in his yard and roll it into the garage. Says this takes a while though, unless you're not particularly fond of your garage.

The whirly-bird cruises at about 75 mph with a maximum speed of 86.

(The report that he has requested firemen's poles installed from the roof of all Tek buildings is entirely fictitious.)

WANTED

WITNESS TO AUTO-BUS ACCIDENT: Sept. 19, at 19th & SW Columbia yellow farm labor bus & '58 blue & white Chev. Any info? John Balog, ext. 7110.

MY SON, 16, NEEDS ACTIVITY: Used gas mower or motor to repair on. Nothing too expensive. Errol, ext. 350.

HUSKY PUPPY: Alaskan or Siberian, not over 3 mos. old, pedigree not necessary. Helen Osburn, ext. 7696 swing.

15-FT. HOUSE TRAILER: or thereabouts; also want Mod. 70 30-06 or 257 rifle. CH 4-1421.

TIME MAGAZINE: December 1 issue. Clara, ext. 200-S.

USED TV SET: pref. one w/remote control attach., need not be work. cond. Jack Millay, ext. 345.

SABER SAW: in gd. cond. Ed Cottrill, 246-5519.

NATIONAL GEOGRAPHIC: '62 & '63 editions; also '60 to '63 Britannica yearbooks. MI 4-1775 aft. 4.

ELECTRIC BUTTER CHURN: MI 6-2204.

METAL-BOTTOM CAGE: suitable for one fat guinea pig (under \$5). Jim Jungwirth, JE 8-2473.

MISC. FOR SALE

STRATFORD-BESSON CORNET: & Holton Collegiate trumpet, \$75 ea. or trade. Paul Adamson, ext. 335 S or EL 7-3697.

AMERICAN FLYER TRAIN: like new, 5-pc. set w/transformer & track, paid \$75—sell \$25. Anita Moore, ext. 7315 or MI 4-3358.

SKIRTS & SWEATERS: high school type, \$5 set; dresses & coats, \$10 set. ME 9-3872.

SIEGLER OIL HEATER: '62 mod., like new, w/elec. fan; used only 8 mos. \$175. EL 7-6838.

POLAROID CAMERA: Mod. 80A, 11 attach., \$45. Jo Hill, ext. 7582 or EL 7-6636.

BOY'S 26-IN. BIKE: excel. cond., \$25; 6-yr. crib & matt., \$15. MI 4-6374.

CHILD'S SEWING MACHINE: Singer \$5; child's elec. organ \$7.50; lge. doll buggy \$3; toy chest, 20x45, \$15; chrome & metal dinette \$15. MI 8-1518 aft. 4.

CHRISTMAS TREES: U-cut at Hornecker's; turn right off Sunset hwy. at N. Plains exit—follow signs; 50 cents—\$1 per ft. 331-2622.

SHOTGUN: 20 ga. 3-shot bolt w/1 box shells, \$25; Kennedy mach. tool chest, \$25; formica-top table & leaf, yellow, \$15. MI 6-3771.

FOR THE HOBBYIST: Philco radio-phonograph, table mod., needs work, \$10. MI 4-1237.

6-VOLT BATTERY: gd., \$4. MI 4-7460.

THOMAS ELEC. ORGAN: single manual, gd. cond, \$225 cash. MI 6-2990.

MOTOROLA TV: \$45; accordion \$150; silver miniature poodle pups \$100 ea. MI 4-2935.

TT GAUGE ELEC. TRAIN: w/track & access. Make offer. Katherine, NE 6-4768.

GEM-TOP CANOPY: for Jeep ½-ton, pickup, \$90 or best offer. Bud, ext. 7184 or 292-1728.

8MM PROJECTOR: \$35. MI 4-9327.

KENMORE AUTO. WASHER: late model Pink Lady w/suds saver, excel. cond., \$100. MI 6-4208.

NEW '63 GAS RANGE: cabinet type, brown tone, never used, \$100. Carlton—1-852-7890.

STURDY PLAYPEN: & baby seat CY 2-1493.

MAN'S TUXEDO SUIT: pants, size 38, cummerbund, shirt size 15½, studs, complete, \$35. OL 4-7320.

LIONEL TRAIN: complete set, incl. transformer, \$11.50. AL 3-5790.

GIRL'S BIKE: 26-in., gd. cond., \$25. 289-1232.

MISC. FOR SALE

BLOOMING PALM: house plant, \$5. CH 4-2354.

SIMMONS HIDE-A-BED: beige nylon, never used since re-uphol., \$175. MI 4-6970.

Y BB GUN: \$15 value, 1 yr. old, 8 cond., \$8.95. Dora Purdy, 331-2219 (North Plains).

CLARINET: 3-Star, all metal, excel. cond., \$30; man's suit, size 38, worn 3 times. \$25. AL 4-5120.

2-STAGE REGULATOR: US Divers Aquamaster, like new, \$50. BE 5-7708.

MOVIE CAMERA: Brownie 8mm, light bar, assort. extras, \$17.50. Ext. 307 or 292-8091.

TWO OVAL RUGS: w/pads, 4 mos. old; 8 x 10 red, \$49 and 10 x 15 green, \$129. Hank Bullock, ext. 575.

26-IN. GIRL'S BIKE: needs 1 tire, \$15; 26-in. girl's bike, gd. cond., \$20. MI 4-0080 aft. 4.

WURLITZER: spinet piano, perf. cond., mahog. & leather, \$375. CH 6-2834 aft 4:30 or wkends.

MINOX CAMERA: B/C & elec. flash guns, tripods, binocular attach., viewer, proj., develop. kit, etc., etc. \$500 value for \$375. Loyde, ext. 7241.

HAND-CROCHETED BEDSPREAD: white; cleaned & blocked, \$30. MI 8-6275.

3-PC. BLUE LUGGAGE: \$20; brown tweed girl's coat, size 12, \$8, uke, \$6. MI 4-0577.

CONVENTIONAL WASHER: gd. cond., \$30; elec. hot water heater, 42-gal., \$35. EL 7-3392.

HOTPOINT DRYER: gd. cond., \$25; 4ft. fluorescent lights, 2-bulb type, \$3.50 ea. MI 4-3423.

HORSE TRAILER: \$50. Joe, ext. 340 S.

SIMMONS BEAUTYREST: extra long box springs & matt., \$50. MI 6-4248.

NORMANDY CLARINET: Reso-tone No. 1, cost \$139, sell \$95, gd. cond. Eva or, ext. 7316 or EL 7-9450.

EASY SPIN-DRY WASHER: \$15. Gladys Chamberlain, CH 4-1278.

DOLL BUGGY: new cond., \$7.50; yellow chiffon formal, size 14, full length, excel. cond., \$12.50. MI 4-7242 aft. 5:30.

SPANIEL-SAMOYED: pups, 10 wks., need Christmas homes, \$2. ME 9-5289 aft. 5.

ROCK HOUNDS, ATTENTION: Tur-rattella agate, 50 cents lb. Jim, ext. 450 or MI 4-1608.

BARBIE DOLL CLOTHES: priced from 35 cents to \$2.50; order for Christmas. MI 4-2675.

ACCORDION: Scandali 120-base w/case, \$95. BE 6-7607.

BIG RED DOLL BUGGY: almost new \$5; bowling set \$1; punching bag & rack \$3; elec. train w/extras \$15; Tiny Tears doll \$2. 228-2791.

CHRISTMAS PUPPIES: mixed breed, \$5 ea. KE 9-3417.

ENGLISH RACING BIKE: boy's 10-speed, 26-in., 6 mos. old, \$35. 656-3202 aft. 6 p.m. or Barbara Hartley, ext. 7797.

BIKE: 3-speed Huffy Sportsman w/all racing equip., excel. cond., \$35. MI 4-6028.

FIREPLACE WOOD: gd. clean dry fir, all chopped, ready to use. \$14.75 per ¼ cord, delivered. MI 4-0577.

GIRL'S BIKE: 26-in., gd. cond. except tires \$10. BE 5-7483.

ROSELLI ACCORDION: a beaut. instrument, \$75. MI 4-0805.

SAILBOAT: 18-ft., \$400. CH 4-2318.

AKC REG. SHELTIES: min. Collies, hold 'til Christmas, \$50 & \$75. 395.

TWO 15-IN. WHEELS: for '58 thru '62 Rambler, like new, \$4 ea. Ext. 7616.

SOFT TOP: white for Austin-Healey, w/support, gd. cond. Best offer. MI 4-6345.

CONN CAPRICE ORGAN: immac., big sound, lt. mahog., 4 yrs. old, cost \$1000, top buy for \$500. MI 6-2349.

MISC. FOR SALE

FIRESTONE TIRES: four 8:00 x 14, off new car, \$40. Ext. 7486 or EL 7-6029.

OVERHEAD CAMPER: '62 Aloha, 8-ft. w/jacks, gd. cond., \$950. 771-9634.

DBLE. BEDSTEAD: box springs & matt. \$20; twin Holly. headboard, frame, matt. & box springs \$15. Lola, ext. 252 S.

SPORTING RIFLE: w/Redfield sights, custom stock, Mauser 7.65 cal., \$45 or best offer. Donna Harwood, ext.253 S or CY 2-2276.

DOLL CLOTHES: Chatty Cathy, Candy Fashion, Lindy & Ruthie, \$1 to \$3; doll wedding dresses on order. Penny, MI 6-4270.

WALNUT DINNING SET: \$65. Louise, ext. 270 S or MI 6-1858.

GOLD FORMAL: ballerina length, size 13, \$10. 284-5312 aft. 4.

ROPER GAS RANGE: excel. cond., \$50. MI 6-4268.

BARBIE CLOTHES: 10 outfits for \$7 on order; sturdy children's table & 4 chairs, \$19.95. CA 8-1564.

CHRISTMAS PRESENT: two AKC reg. toy Terriers w/papers; sacrifice \$50 ea. or best offer. MI 8-6352.

TREATED HOLLY: lots of berries, 5 lbs. \$2.50. Order now, any amount. Lloyd Austin, MI 6-2568.

14-FT. INBOARD BOAT: skis, rope, jackets, etc. Everything goes—\$1095. W. Thelen, ext. 527.

KAYE SPANISH GUITAR: w/case, very gd. cond., \$25. MI 8-1904.

RIDES WANTED

FROM 4314 SE LOGUS RD: Milwaukie area, to Beav. plants, 7-3:30 shift. OL 4-2291.

FROM FOREST GROVE: want ride or carpool, 7-3:30 shift, to Warehouse. Mary King, ext. 7441 or EL 7-6018.

FROM SE 13 & POWELL BLVD: or will join carpool. BE 6-8810.

FROM 197 & SW BASELINE RD: 7-3:30 shift, after Jan. 1. Betty Thomas, ext. 7696.

FROM SE 22 & POWELL: to Bldg. 47, 7-3:30 shift. BE 4-2123 eves.

FROM VIC. NE 54 & SANDY: to Sunset plant, 7-3:30 shift. 284-5312.

FROM FOREST GROVE: to Bldg. 47, 8-4:30 shift. Virginia Forsythe, EL 7-6240 or ext. 7261.

FROM 179 & FARMINGTON RD: to Bldg. 46, 6:45 to 3:15 shift. Rose Moses, ext. 7582.

RIDES AVAILABLE

FROM VANCOUVER, WASH.: to Beav. plants, 7-3:30 shift; will join carpool. OX 3-5006.

CARS FOR SALE

'58 ISETTA: 40-50 mpg., heater, sunroof, very gd., \$150. MI 8-3555 or 228-8712 aft. 5.

'52 HENRY J: new eng., brakes, shocks, gd. shape, \$250 or trade for motorcycle. Tony Antons, ext. 7789 or ME 9-3839.

'51 CHEV: 2-dr. sedan, beige, \$150; '60 Chev pickup w/camper, \$1695. ME 9-4665.

'51 CHEV: 4-dr. sedan, gd. cond., \$150. Jim, OL 6-1021.

'55 DODGE: 4-dr. wagon, r/h, excel. mech. cond., auto. trans., \$425, cons. trade. ME 9-3518 aft. 6.

'52 DESOTO: wagon, runs, motor needs work, gd. body, r/h, best offer over \$75. Ron, MI 4-9331, Sunday only.

'52 PLYMOUTH: 4-dr., gd. motor, brakes & body, \$125. Bob Valley, ext. 295 S or BU 9-0782.

'51 FORD: 2-dr., best offer. ME 9-4688.

'60 FORD: ½-ton pickup, V-8, 4-speed, custom cab, long, wide box, commercial tires & wheels, \$1300 or offer. Lloyd, 234-9163 eves.

CARS FOR SALE

'61 TRIUMPH: twin, motorcycle, \$600. MI 4-3842 aft. 4.

'55 CHEV: ½-ton pickup, 261 cu. in. motor w/o'drive, very clean, \$775. MI 4-5807 eves.

'53 CHEV: 2-dr., 6-cyl., auto., r/h, sharp, green, \$295. Don, ext. 7460 or ME 9-3026.

D-2 CATERPILLAR: best offer. Rt. 2, Box 282, Gaston. Phone N-2-3954.

'62 CORVAIR: big eng., r/h, buy now for only \$1495. Ext. 530 or MI 8-2235 aft. 4:30.

'57 CHEV: ¾-ton pickup, 4-speed, r/h, steel deck, 6 ply tires, sharp, \$800. OL 9-1898.

'52 MERC: \$150. ME 9-4596.

'49 CHEV: \$100 or best offer. Marlene Hunt, ext. 7317.

'53 FORD: sedan, stick shift, r/h, gd. shape, \$200. CY 2-8202.

'62 RAMBLER: 400 series, bucket seats, hydro., low mileage, \$1750; '61 custom Rambler, hydro., positraction, \$1575. KE 9-8364.

'48 CHEV PANEL: \$300, w/many spare parts; never been raced. Davey, ext. 7375.

'49 GMC: ½-ton pickup, r/h, nearly new paint, brakes & battery, 40% rubber, \$325. Tony, ext. 630 or MI 8-3443 eves.

'54 VW: r/h, '58 eng. & trans., new top & brakes, 3 new tires, \$475. Cal Watson, ext. 575.

FORD F-8: 2-ton truck, 16-ft. van, hydraulic tail gate & steel floor, gd. cond., gd. rubber, 10:00 x 20 tires, \$800. MI 4-5312 or MI 6-2151.

'29 MODEL A: Desoto mill, 4 carbs, white paint & uphols., elec. fuel pump, make offer. John, ME 9-4427.

'60 CHEV: wagon, V-8, auto., r/h, new tires, excel. cond., \$1400. Ext. 353 S or MI 8-4321 aft. 5.

'52 STUDE: Champion, 2-dr. htdp., gd. motor, body, r/h, \$150. Ray, ext. 295 S or ME 9-3917.

'59 SIMCA: 4-dr., very gd. cond., \$375. Ext. 672 or AL 5-5188.

'58 PONTIAC: convert., new top, excel. cond., must sacrifice, reasonable offer accepted. Verla Argo, ext. 7796 swing.

'52 CHEV: brakes, bat., starter new, o'hauled 1 yr. ago, gd. rubber, r/h \$125. Mendel Phillips, ext. 7474 or AL 4-7554.

RENTALS

3-BDRM: house, Cedar Hills, 12200 SW Edgewood, nr. bus, school, \$120 lease or lease/opt. CY 2-5553 eves.

SMALL HOUSE: West Slope, suit. for single person, \$40, 2435 SW 87th. CY 2-5980.

3-BDRM: house, Beav., \$125 or \$120 lease. MI 4-2572 aft. 6.

2-BDRM: duplex, \$55. 5810 SW 54th. CH 4-4129.

2-BDRM: range & refrig., \$82.50; three 1-bdrm., range & refrig., \$60. Sunset apts., corner Cornell & Murray rds. MI 6-1377.

1-BDRM: house, furn., water & garb. pd., 10 min. to Tek, couple or single person, \$75. MI 6-1675 or MI 4-5195.

3-BDRM: Baseline betw. Tek & Hillsboro, unfurn., garden spot, 2 yrs. old, \$90 incl. water. MI 4-3298.

2-BDRM: duplex, gar., water & garb. pd., elec. heat, adults, no pets, \$70, 2860 SW 178th, Aloha. MI 4-1507.

2-BDRM: Cedar Mill, clean, new dec., lge. liv. rm., fp, kitch. w/handy util., attach. gar., \$90. MI 8-2652.

3-BDRM: house, Huber area, \$85. MI 4-3843.

2-BDRM: house, Aloha, nr. transp., stores, adults, \$85. MI 4-3168 days, or MI 4-5568 eves.

1-BDRM: lge. furn. apt. Beav., all util. except elec., adults, \$85. CH 4-3744.

2-BDRM: lge. liv. & din. rms., kitch. w/nook, all util. pd. except phone, rec-dec., \$125. AT 7-1149 or AT 8-2013.

RENTALS

1-BDRM: house, appli. furn., nr. Tek, \$85. MI 4-8876.

2-BDRM: apt., some util. furn., 1 mi. to Tek, no children or pets, \$90. MI 4-9210.

SKI CABIN: Gov. Camp, furn. for 8 to 10, rm. for many sleeping bags, \$25 per week. Fred Nickel, ext. 374 S or 292-3928.

ROOM: \$6 wk. 457 SW 2nd. MI 4-1377.

HOUSES FOR SALE

3-BDRM: FHA appraised at \$11,425, \$375 dn., 950 SW Main, Beav. MI 4-7967.

3-BDRM: 2 bath, builtin range, carpets, l'scaped, nr. Sunset hi; transf. to Detroit. \$19,200 or make offer, State GI. MI 6-4048.

4-BDRM: 1-2/3 bath, din. rm., 100 x 240 lot, kitch. w/nook, dble. gar., \$20,500. SW Murray rd. MI 4-3361.

3-BDRM: ranch home, new dec., \$13,950, 29400 SW 216, Aloha. MI 4-7954 eves or wkends.

2-BDRM: close in, w/80 x 120 lot, lge. cov. patio & attach. gar., \$10,800. MI 4-7039.

3-BDRM: ½ A, fp, w/w carp., 2 yrs. old, 6135 SW 179, Beav., \$14,000. Sam Allen, MI 6-1956.

3-BDRM: Cape Cod, 2 blks. to Portland U in College Crest, new roof, \$13,950. BU 5-3475.

5-BDRM: 3 bath, 3 fp, 1 yr. old, ¾ A, Tigard area, \$22,500, FHA. ME 9-4446.

NINE CABINS: & house at Oceanlake, close beach & ramp, \$23,500. MI 4-3473.

3-BDRM: ¾ A, Aloha, 2½ mi. to Tek, 2 bath, 2 fp, fam. rm., sep. util., base-board heat, w/w carp., patio, \$17,900. MI 4-2895.

3-BDRM: bargain, tile bath, birch panel., nat. wdwk., sep. din. & util., cov. patio, \$12,900. MI 4-4259.

CHILD CARE

PERMANENT: loving care; also by hour, very convenient Beav. plant. MI 6-2566.

MY HOME OR YOURS: babysit; 4745 SW 173, Aloha. MI 6-4471.

INFANTS TO SCHOOL AGE: my home, hourly or daily; fenced yd., 1 mi. east Tek, 1 blk. off Sunset, 1800 SW 76. 292-6212.

CHILDREN ANY AGE: my home on Walker rd., anytime. MI 6-2264.

MY HILLSBORO HOME: \$2 day. MI 8-4812.

CARE FOR ONE CHILD: 2 yrs. old or up; my Cedar Hills home, meals, 5-day week, experience. MI 4-4492.

BABYSITTING: eves. & wkends., high school senior, Hillsboro-Beav. area. Nancy, MI 8-4564 aft. 4.

FREE

2 CUTE KITTENS: 1 all-black, 1 black w/white marks, 10 wks., half Siamese. MI 4-6156.

TEENAGE GIRL CAT: all-black, desires new atmosphere away from strict Siamese parents. MI 4-0014.

ADORABLE PUPPIES: wonderful Christmas gifts, must see to apprec. Nancy Turner, page Plant 2 or 244-4298.

KITTENS: cute, long-haired, to gd. homes. CH 6-5577.

DARLING: female kittens, 2 calico, 1 orange & white; will hold 'til Christmas. MI 8-5909.

REG. GERMAN SHEPHERD: all papers & shots; must have room to run. Jim Harms, ext. 7474 or MI 8-6338.

PET GOAT: young female, very gentle. 292-2927 bef. 3:30.

GERMAN SHEPHERD: 1 yr., black w/silver trim, excel. health, good with children. JE 8-2378.

Warehousers put F&M in storage at hoop opener

By ED DAVIS

The initial dribble of the season turned into a fairly steady stream as the Warehousemen pelted F & M in Tek's basketball opener, 50-26, at Jesuit high gymnasium. John Flett led the Warehousemen with 20 points. F & M's

leading point-maker was Loren Trumbo with 15.

The week's second game saw the Sun(set) rapidly in the west—aided to an early twilight by Plant IV, 59-27. High scoring Fourman was Vern Jenkins with 18 points. Sunset's brightest ray was Bob Thierman's 10 points.

Game three saw the defending champs, Plant III, continue their two-year-old undefeated record by outscoring Plant II, 55-29. Leading scorers were: Plant III, Bill Hardin, 18 points and Plant II, Fred Quigg, 13 points.

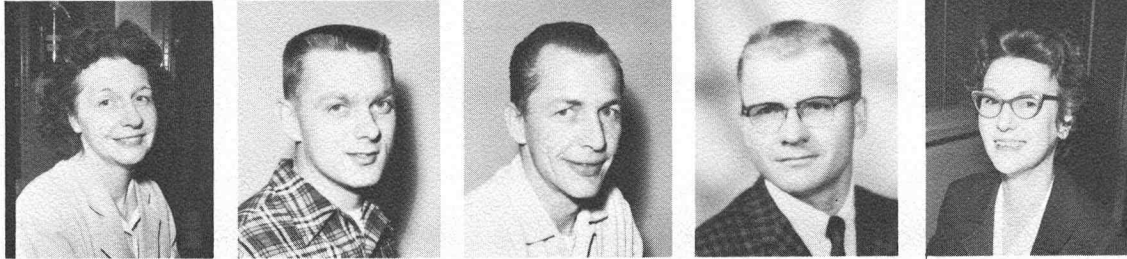
Game four pitted Research against Plant I with Research

emerging as victors by a lopsided 55-18. An amazing 40 points were scored by Ray Anderson of Research, while Elwin Yates tossed in 6 to lead Plant I offense.

The Basketball League plays two games each Wednesday and Thursday night. The first game each night starts at 6:45 and the second at 8:00. The games are played at Jesuit high school. Spectators are asked to please comply with the no smoking agreement.

The Wednesday night games are refereed by two paid officials from Portland; the Thursday night games will be officiated by King Handley (Materials Management manager) and Ron Stempel (Product Administration) who have generously agreed to donate their time and talents.

Five receive December 10-year service awards



TEN-YEAR SERVICE AWARDS were presented to the following employees during the month of December: (L. to r.) Juanita Schenk (Assembly, Plant 1), Bob Jackson (Assembly, Plant 1, unit manager), Vaughn Weidel (Instrument Engineering), Kermit Fleck (Syracuse field office) and Marybelle Rash (Product Administration).

Calendar

Tek Fotobugs regular meeting—Monday, Dec. 16, 7 p.m., Plant 3 conference room. Slide show of various subjects, with discussion on photographic improvements. Story welcome.

Unpaid shutdown day—Monday, December 23; work the following Saturday, December 28.

Paid shutdown day—Christmas Eve, Tuesday, December 24.

Paid holiday—Christmas Day, Wednesday, December 25.

Tekaqua Christmas tree sale—(See story in today's Tekweek.)

Dick Terho smashes pins to score total of 221

Dick Terho of the Tek Men's league "bowled 'em over" last Wednesday evening at Sunset Lanes with his high game of 221. That same night Don Darnell tallied high series of 192, 192, 188—572.

Unusual Scopette bowling score was Gail Denham's triplicate: 111, 111, 111. Other highpoints of the week's activity were:

High series: Ruth Lukens 550; Darlene Samuelson 529 (202 games); Pearl Pinion 525; Jennie Herb 507; Doris Gibbens 502. High game: Dit Hooker 210. Missed triplicate: 160, 168, 168 of Wilma Stapleton.

Seven Tek Bug men tallied 200 or over during league play. Bug scoring went like this:

High series: Ruth Lukens 456; John Winkelman 588. High game: Lois Lockwood 175; Vern McAdams 233. 200 games: John Winkelman 205, 203; Ben Brazauski 216; Tim Harnett 202, 200; Arnold Brokaw 217; Don Sherrod 203; Vern McAdams 233.

December dinner held

Tektronix office girls enjoyed a banquet last Friday evening at DeVault's in Beaverton.

Jeanette Fowler and Paula Lawson, both of MSE, were co-hostesses.

Oregon Mountain Rescue members summoned for F-89 pilot search

Four Tektronix employees, members of the Oregon Mountain Rescue team, were summoned November 21, along with six other rescuers, and were advised to prepare for a trip to northeastern Washington where they would conduct a ground search for the pilot of an F-89 that crashed in the area November 14.

Stan Foss of Field Information, Dave Nelson of Patents & Licensing, Bob Ragsdale and Jerry Pattison, both of Research Device Application, flew early that evening on an Air Force "boxcar" to Geiger field in Spokane. The group of 10 was then transported by Air Force vehicles to Loomis, Wash., where they transferred into trucks equipped with chains. When the trucks could travel no further, snow cats carried the men as far as possible—within a few miles of the crash.

After the crash the Air Force searched the Windy Peak area by air as often as the weather permitted—which wasn't too often, Stan said. They used light planes and their new AF jet helicopters.

Oregon Mountain Rescue began a "grid search" upon arrival, climbing hills and peaks, then using skis on sloping hills and flat terrain. They were instructed to look for clues impossible to spot from the air, such as a parachute dangling from a tree. The temperature fell to 11° above zero one morning; precautions were taken so no one would get frost-bitten, Stan said, otherwise the "rescuers would have to be rescued."

"We all felt hopeless after we saw the situation," he reported. "There had been three feet of snowfall since the crash." They

were joined the next day by 28 other rescuers from Portland. The "last-ditch" search effort lasted for 2½ days. Unfortunately, not a trace of the pilot could be found.

Teks in the News

Robert Muzzey (FME) transferred November 27 from Field Training to the Boston field office.

Deanne Discasey (Assembly, Plant 2) was crowned Portland's USO Girl of the Year November 30.

Marion Peterson (Electron Physics Research, Chem lab) had an article published in the October 1963 issue of Metal Finishing magazine. His work was entitled "Electroless Plating on Gallium Arsenide."

Morrie Motola (Standards & Specifications) wrote an article "It Pays to be Dense (In Drawing for Reproduction)," for the September 1963 Graphic Science magazine.

Mike Park, Manufacturing manager, toured the Oregon State Mental Hospital in Salem December 4 and spoke to group representatives there.

Scotty Pyle, International Marketing staff, attended an American Management Association clinic in New York last week, and visited the Bureau of International Commerce in Washington, D.C.

TEKTRONIX BASKETBALL LEAGUE

First Week Standings

	W	L	PF	PA	PCT	GB
Warehouse	1	0	50	26	1.000	...
Plant IV	1	0	59	27	1.000	...
Plant III	1	0	55	29	1.000	...
Research	1	0	55	18	1.000	...
F & M	0	1	26	50	.000	1
Sunset	0	1	27	59	.000	1
Plant II	0	1	29	55	.000	1
Plant I	0	1	18	55	.000	1

FIRST WEEK RESULTS

Warehouse 50, F & M 26
Plant IV 59, Sunset 27
Plant III 55, Plant II 29
Research 55, Plant I 18

NEXT WEEK'S GAMES

Dec. 18, 6:45 p.m.: F & M vs. Sunset
Dec. 18, 8 p.m.: Plant III vs. Plant I
Dec. 19, 6:45 p.m.: Wareh'se vs. Pl. IV
Dec. 19, 8 p.m.: Plant II vs. Research

The seven-week regular schedule will allow the eight teams one complete round robin of play. After the end of the regular season, a playoff series (beginning February 5) will determine the 63-64 season champions. Plant III is the two-year defending champion.

Tekaqua trees on sale

Christmas trees are on sale now on a lot across from the Ceramics building (Bldg. 13); the annual sale is sponsored by the Tekaqua water sports club.

The quality fir trees were purchased by Tekaqua from a tree farm. All are priced at \$2.50.

Club members will be on hand from 3:30 to 5 p.m. daily, and from 9 a.m. to 4 p.m. Saturdays and Sundays, to sell the trees.

Contact Dave Lohr, ext. 325, or Roy Slack, ext. 647, for additional information.

Sign study underway

Development of a consistent sign system for both directional and building signs on Tektronix industrial park is nearing completion.

Mel Lofton of the Facilities staff is working on the project.