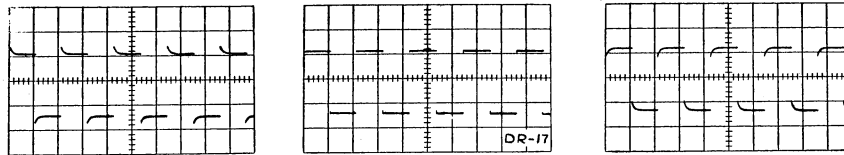
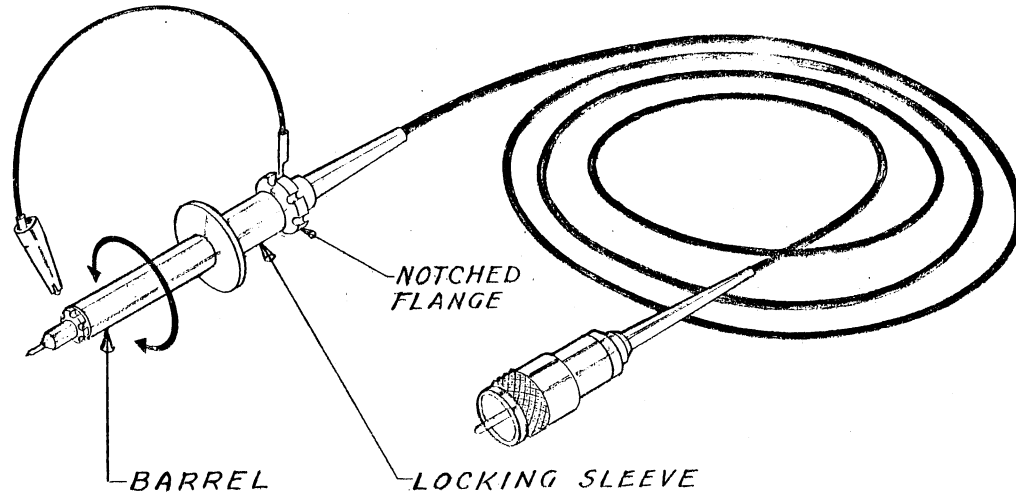


# P6000 PROBE



## ADJUSTMENT PROCEDURE

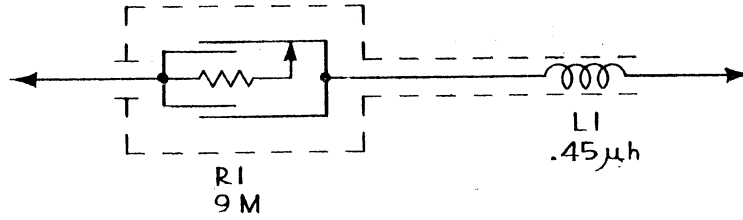
A Type P6000 Probe is furnished as an accessory with your oscilloscope. Connected to the INPUT connector of the oscilloscope, the probe presents an input characteristic of 10 megohms shunted by 10 micromicrofarads and has an attenuation ratio of 10:1. The maximum voltage which may be applied to the probe is 1200 volts. Exceeding this rating, either in peak ac volts or dc volts, may result in damage to the components inside the probe body.

An adjustable capacitor in the probe body compensates for variations in input capacitance from one instrument to another. To insure the accuracy of pulse and transient measurements, this adjustment should be checked frequently.

To adjust the P6000 probe, set the calibrator

control for a calibrator output signal of suitable amplitude. Touch the probe tip to the CAL. OUT connector and adjust the oscilloscope controls to display several cycles of the waveform. Unlock the probe for adjustment by turning the locking sleeve at the rear of the probe body 4 or 5 turns counterclockwise. Hold the probe firmly by the notched flange at the base of the probe, and adjust by turning the probe barrel for an optimum waveshape as shown in the center waveform illustration.

After a good flat-top square-wave is achieved, turn the locking ring clockwise until it is fairly snug but not tight. Holding the probe by the barrel, make fine adjustments by turning the notched flange. Then carefully turn the locking ring down tight.



P 6000 PROBE <sub>gAB</sub>

**PARTS LIST**

|                                 |         |
|---------------------------------|---------|
| 6000 Complete Probe Assembly    | 010-020 |
| 6000 Probe Tip Assembly         | 206-015 |
| 6000 Ground Lead Assembly       | 175-039 |
| 6000 Probe Pincher Tip Assembly | 013-027 |
| 6000 Tek-Tip, Hook              | 206-023 |
| 6000 Tek-Tip, Straight          | 206-034 |
| 6000 Probe Holder               | 352-024 |