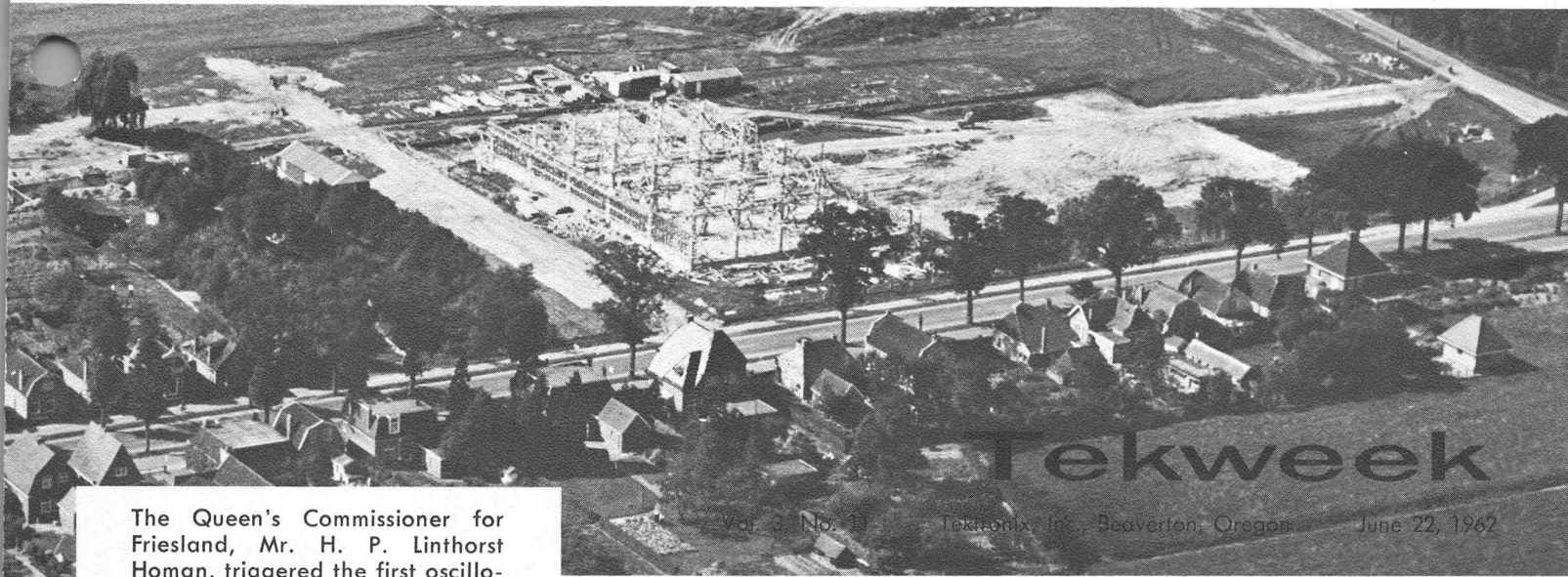


Formal Opening of Tek Holland N.V. Today



The Queen's Commissioner for Friesland, Mr. H. P. Linthorst Homan, triggered the first oscilloscope at three o'clock this afternoon at the formal opening of the manufacturing operation of Tektronix Holland N.V.

About 100 employees will occupy the new building located at Marktweg 73a, Oudeschoot, on the outskirts of Heerenveen, Netherlands. Earl Wantland is manager.

Vol. 3, No. 11

Tektronix, Inc., Beaverton, Oregon

June 22, 1962

Trip To Tektronix' Overseas Operations 'Quite Fruitful,' Says Hans Van Dam

"It was a pleasure to meet Earl Wantland, who is in charge of Tektronix Holland N.V., and who, with his staff, was very busy preparing for the official opening of the plant on June 22."

This comment from Hans Van Dam reflected one of the accomplishments of his recent trip to Europe. Hans is in charge of corporate consolidation accounting between Tektronix, Inc. and the international subsidiaries. He spent a major part of his time at 73a Marktweg, Oudeschoot, Netherlands (in the Municipality of Heerenveen), headquarters for Tektronix Holland N.V. and the Heerenveen branch of Tektronix International A.G.

At Oudeschoot he discussed with our accountants (Bill Borbiro, Tektronix Holland N.V.; Kees Roest, Tektronix International A.G.) specific problems in connection with the closure of the fiscal year. Hans, a native of The Netherlands, was able to converse in Dutch with Tek's personnel in Holland. He felt the trip was of special advantage in speeding up communications, by personal contact, and in avoiding misunderstandings that often arise in translation of correspondence.

He also spent a few days at Tektronix Guernsey Ltd., discussing similar fiscal matters with our accountant, Al Graham.

Hans mentioned that the trip was quite fruitful and that he appreciated the opportunity to get acquainted with the international personnel. He also remarked, "I noted that many people in the Heerenveen plant, even at this distance from Beaverton, have a touch of 'Tektron-itis'—meaning that they came back nights and weekends to solve problems that are inherent to any factory which has just started producing."



BASEBALL BOOSTER DRAWING was held last week at the Warehouse cafeteria. Joann Spiering (Stock Whse.) drew winners' tickets from box held by Ken Nelson (Stock Whse.), Tek Baseball club president.

Softball Game Called Due to Player Fatigue

Some tired softball players called it quits at the end of the sixth inning of play, June 18, at Fir Grove school field, when the Photography department team played the Electrochemical team.

Photography team captain Ron Lowry beamed with pride when he announced the score—Photography 44, Electrochemical 28. Ron said the game was called "due to fatigue" and that the boys "just couldn't hack it any longer."

He encourages other departments to organize softball teams and challenge the three teams that have been playing.

Ten Employees Win Prizes In Baseball Club Drawing

Marcella Wakefield (Precision Mechanical Assembly) won a transistor radio in the Tek Baseball club's booster campaign drawing last week. Ken Nelson, club president, reported that the campaign was very successful.

Other employees whose names were drawn for prizes were Sherm Bucher (C/S Order Proc.), Vince Vandecoevering (Building Service), Ken Hunt (Whse. Stock), Joe Harvey (Data Systems), Joe Bolin (Stock Whse.), Ethel Hunt (Shop Prepack), Don Handbury (Finals, Plant 3), Roger Donato (Panelcraft) and Ron Wetzler (Finals, Plant 3).

BUILDING SERVICE NIGHT OWLS

Clem Klink served a farewell treat—strawberry shortcake and ice cream—last Wednesday. He is transferring to Ceramics.

Jan Hettema and **Ernest Hendricks** are new men in Bldg. 46; **Stephen Turner** is our summer employee in Bldgs. 39 and 47.

Bruce Whitmore and **Dick Gibbons** celebrated birthdays recently; **Bill Hall** commemorated his first Tek anniversary.

ACCESSORIES, SWING SHIFT

Bob Jenkins, **Kit Eng**, **Paul Lee** and **Roy Lee** are here for the summer.

Marge Dauelsberg and **Marilyn Robinson** have gone on day shift.

Norma Powne, **Peggy Karr** and **Vivian McCawley** are new girls.

ASSEMBLY, PLANT 1 GEORGE RICKMAN'S GROUP

We welcome three new people into the group: **Helen Haning**, **Diann Knorr** and **Aaron Tanielian**.

New officers are **Jane Harnette**, group representative; **Opal Barth**, alternate; **Colleen King**, social chairman; and **Betty Fillinger**, reporter.



PRECISION MECHANICAL ASSEMBLY is losing a long-time Tek, **Bob Strutz**, who began work at Tektronix in November 1948. He is leaving to take a maintenance engineer's position at the Idaho Technical Institute. Almost fourteen years ago Bob was one of six people employed in the Shop which, at that time, had one foot shear, a kick press, one drill press and an old turret lathe. Eighteen months ago Bob transferred to Precision Mechanical Assembly where he worked as an inspector and was an important part of the success of Tek's C-12 camera.

STOCK STATIC WAREHOUSE

Joann Spiering announced her engagement to **Paul Peters**. They plan a fall wedding.

Frankie Houston is back with us for the summer. She is working in Central Control.

Ellen Slyter of Pre-Pack department went to Fargo, N.D., to be with her parents who celebrated their 60th wedding anniversary June 15.

New employees in Warehouse Stock are **Ira Cleland**, **Leonard Woolhiser**, **Harvey Gross** and **Howard Drey**. New in Pre-Pack are **Ruth Shirley**, who transferred from Food Services, and **Lora Mae Elerick**.

ASSEMBLY, PLANT 3 FORREST MARTIN'S GROUP

We had a spaghetti smorg last Friday.



'62 PICNIC COMMITTEE — Front row: **Bill Cronin** (A/C), concessions; **Bob Zurcher** (Films), adult games; **Bob Hart** (CMI), rec. comm. chmn; **Dick Falk** (Emp. Relations), picnic coordinator. Back row: **Doreen Dwigans** (Finals, Pl. 1), children's games; **Russ Bassindal** (Mfg. Tooling), picnic chmn.; **Lee Wagner** (CMI), adult dance; **Bud Wright** (Test, Pl. 3), gate; **Fran Holliday** (Int'l Mkt.), teenage dance. Not pictured: **Jerry Kroetch** (C/S Parts Pub.), bingo; **Ron Stempel** (C/S Inv. Control), sports; **Mike Brand** (Cent. Staff Services), balloons; **Connie Kler** (Photography), prizes.

ELECTROCHEMICAL

Paul Jordan is working as summer help in the Support group of the Electrochemical department.

Our softball game, which was to be played June 13, was rained out.

ASSEMBLY, PLANT 3 LUKE'S SPOOKS

Cables had a smorg honoring **Cy Hardie** who received her citizenship papers last week.

New Test Trainers are **Don Gray**, **Wilbur Nees** and **Earl Raeburn**. New permanent employees are **Sharon Rogers**, **Darlene Wruble**, **Susan Lee** and **Joy Norgard**.

Margaret Landon, **Keith Lyon**, **David Lord**, **John Costi**, **Rick Mooty**, **Larry Hunter**, **Allen Dutton** and **Ed Ritz** are summer employees.

COILS

Twenty-six girls attended a May 22 dinner at the Country Kitchen honoring **Olive Ball** who was celebrating her birthday and her retirement. Before her last day (May 25) she received many cards and gifts.

Pat Winkler left for maternity leave; **Pat Cookman** is back after a short illness.

Barbara Webb was elected group representative; **Carol Pitt**, alternate; **Mary Schilling**, social chairman; **Charlene Fraser**, reporter.

We welcome three new girls: **Hazel Thompson**, **Barbara Nemeyer** and **Margaret Buckman**.

ASSEMBLY, PLANT 1 LOWELL COOK'S GROUP

Our new officers are **Betty Turnbull**, group representative; **Joan Clark**, alternate; **Betty Thomas**, social representative; **Becky Gilmouth**, reporter.

Barbara Griffith transferred to Kit Prep. Welcome to our new summer help—**Michael Mauk** and **Douglas Ding**.

ASSEMBLY, PLANT 2 BILL'S SHORTIES

New group officers are **Kathy Hope** (group representative), **Margie Moe** (alternate) and **Kathy Wegter** (social representative). Cake and punch were served for the outgoing officers—**Ruby Kersey**, **Ann Knudsen** and **Dorothy Reeves**.

Ina Neidigh is hospitalized at Portland Sanitarium.

Like the stock market action, Short Line has been registering heavy losses and gains lately. The losses came as **Ann Knudsen** took a leave of absence and both **Florence Dye** and **Ingeborg Pierce** went on swing shift. The gains were in the forms of **Edna Botkin**, **Steve Senders** and **George Landsburg** who entered the group.

PLANT 2, PLANNING

Summer help in the Planning office is **Mary Lou Tucker**. **Mary Lou** will be a sophomore at Oregon State university next fall.

Denny Olson is on military leave at Fort Lewis for two weeks.

ASSEMBLY, PLANT 1 CABLES AND WIRE PREP

We had potluck for our new supervisor, **Dick Jamerson**, and a gift for our departing supervisor, **Marv Sprecher**.

Helen Thomsen served a first Tek anniversary treat.

Carol Bookshnis terminated. **Irene David** is back on day shift for three months.

PLANT 2, SWING SHIFT MECHANICAL ASSEMBLY

Jackie Harper's husband, **Jim**, returned home after completing his service hitch.

New summer help are **Barbara Dimki**, **Jan Danielson**, **Barbara Elirath**, **Sheila Harris**, **Monica Angstrom** and **Marilyn Kaczan**.

New officers are **Florence Dye**, group representative; **Jackie Harper**, alternate; **Dora Jensen**, social chairman; and **Peggy Wallstrum**, reporter.

Thanks to the outgoing officers for a very fine job. They are **Sue Loader**, **Norlynn Baker** and **Louise Glockner**.

ASSEMBLY, PLANT 3 MARSHALL'S DEPUTIES

Barbara Speece treated the group on the occasion of her 22nd wedding anniversary.

Mary Charlson, **Jane Miesen**, **Eosalie Sateren** and **Donna Pyle** are new members of the group.

The group extends its deepest sympathy to **Lillian Meyer**, whose husband, **Richard**, died recently.

ASSEMBLY, PLANT 1 CABLES & WIRE PREP

Helen Thompson announced the birth of her 7th grandchild June 13.

Birthday cake was served to honor **Lil Walker**, **Janis Elmer**, **Laura McCrory** and **Jean Dickinson**.

Cake was served to honor the outgoing and incoming officers. New officers are **Sally Plaisted**, group representative; **Frances Cotner**, alternate; **Betty Bryant**, social chairman; and **Dolores Peabody**, reporter.

CRT GUN WIRING

A farewell party was given for **Vel Mahaney** who terminated.

Ethel Holbrook Brown returned from leave of absence.

ASSEMBLY, PLANT 2 JAMES' GANG

We have four college boys in our group this summer: **Tom Crabtree, Chuck James, Don Olson** and **Wally Henderson**.

Elsie Niemeyer was elected group representative; **Joyce Weber**, alternate; **Iris Collier**, social chairman; **Aggie Whitman**, reporter.

ASSEMBLY, PLANT 2 DOUG'S DOODLERS

Strawberry shortcake was served honoring **Marilyn Wolever** and **Doug Thompson** who are leaving temporarily. Marilyn will train on swing and Doug will work a split shift between days and swing.

ASSEMBLY, PLANT 2 SUPPORT GROUP

Support group has split into two groups: Wire Prep & Mechanical, Cables & Kit Prep. Wire Prep & Mechanical elected **Ollie McClinton**, group representative; **Margaret Bustrum**, alternate; **Pauline Wolever**, social chairman; **Judi Holsey**, reporter.

Mechanical had a potluck last Thursday in honor of new girls and girls from swing.

Doris Wormington is helping in Wire Prep; she's from Kit Prep.

ASSEMBLY, PLANT 2 ELROY FARAH'S WHEELS

Ginger Hanson is our summer help. **Carmen Lewis** is on loan to inspection for training.

Helen Johnson's daughter, **Nancy**, is working in Resistors this summer, and **Jamelene Caywood's** daughter, **Judy**, is in Plant 2 Training.

ASSEMBLY, PLANT 2 DALE DERBY'S DAYDREAMERS

Our new officers are: **Nora Pirrie**, group representative; **Doris Flynn**, alternate; **Patty Findley**, social chairman; **Larry Fitzpatrick**, reporter.

Elain Regan joined our group from training. Summer employees are: **Vern Crow** and **David Knight** from Portland State college; **Mike O'Rourke** from Reed college; **Wes Brown** from Oregon State university; and **Tammy Gallreath** from University of Oregon.

We had cake June 8 for **Lalah Smock**, who transferred to swing shift.

Anna and **Herman Jacob** were in an auto accident June 11; neither was seriously injured.

QC girls treated **Jean Lebsack** June 15; she is going on leave of absence.

ASSEMBLY, PLANT 2, SWING THE SOLDERETTES

The newly-elected officers are **Helen Kemper** (group representative), **June Frantz** (alternate), **Marla Miklancic** (group hostess) and **Wilda Bryant** (reporter).

We welcome **Sandra Norris**, **Deana Bowman**, **Goldi McIntyre** and **Mary Meyers** from Training; **Ken Bock** from Portland State; and **Chuck James** from Oregon State. Ken and Chuck are working for the summer.

Lucy Root (summer help) is leaving for day shift in Wayne James' group. **Connie Brookens** is transferring to **Bill Mayer's** Short Line.

June Frantz celebrated her second Tek anniversary.

TRANSFORMERS

Jay Dye discontinued his Assembly operations and started in the Winding group June 12.

All of last summer's temporary employees have returned this year: **Tom Wolf**, **Craig Wohlgemuth**, **Gregory Gleason**, **Glen Brisbine** and **Dave Frewen**.

Gary Jones joined Assembly after 18 months with the Winding group.

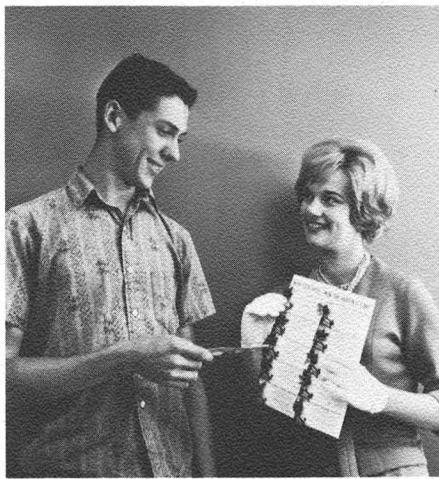
Ramon Heesacker is back with us this summer after a leave of absence to attend Portland State college.

UNIT WIRING, PLANT 1 CASE HISTORIES

New girls in our group from Training are **Doris Bailey** and **Shirley Brown**.

We served cake to celebrate the birthday of our supervisor, **Howard Case**, and as a farewell to **Wilma Nichols** who is going on day shift.

Diana Graham is back at work after sick leave.



PAINLESS EXTRACTION — Ken Becket (Finals, Plant 2) didn't mind purchasing a Rose Festival rosebud pin from Princess Cathryn White of Lincoln high school when the court visited Tek two weeks ago.

CERAMICS

Dale Thornburg received his pilot's license June 4.

Todd Webb won first in his class at the 2nd Annual Rose Cup Concourse D'Elegance, June 9 at the Lloyd Center.

Welcome to **Jim DeGeer** and **Bill Fitch** who have joined us for the summer. Jim is a student at Portland State and Bill has been attending the University of Washington.

Our receptionist, **Corela Hardisty**, is on leave of absence. **Diana Holly** is taking over for us.

ASSEMBLY, PLANT 1 WILSON'S WACKY WIRERS

Ruth Vermeulen and **Colleen Janson** are new to the group from Training.

MATERIAL MANAGEMENT QUALITY ASSURANCE

We are happy to welcome **Lillian Parker** back after she successfully underwent major surgery. She rejoined us June 4, just in time to celebrate her sixth anniversary with Tektronix.

FACTORY INSTRUMENT REPAIR & FE TECHNICAL SUPPORT

Betty Trumbo, **Jerry Eastman** and **John Tucker** have joined our group. Betty is new at Tek, Jerry transferred from the Long Island field office and John transferred from Plant 2 Test.

CRT FINISHING

Mary Corrieri, from Pumps, treated us to candy when she celebrated her sixth anniversary at Tek.

Doris Uhrich (CRT Test) drove with her family to Los Angeles. They brought back **Richard Uhrich** who has been attending Cal Tech. He will be a summer employee in the Electrochemical department.

ASSEMBLY, PLANT 3 GIPSON'S GIRLS

Merlene Warneking and **Millie Millsap** are new in our group.

Dee Ann Vick and **John H. Mathews** are working in the group for the summer.

Snacks were served honoring the birthdays of **Karen Stanley** and **Betty Kjelland**.

SUPPORT GROUP, PLANT 1

Cables and Kit Prep held elections: **Roberta Wilson** is group representative. Her alternate is **Virginia Neilson**. **Irene Olson** was chosen social representative and **Leon Nelson** is new reporter. **Iolene Peterson** is social chairman for Kit Prep. **Erna Butterfield**, who has been training with the day Cabling group, transferred to swing shift. **Edla Borgen** is now a permanent part of Kit Prep.

Doris Wormington is on loan from Kit Prep to Wire Prep.

ASSEMBLY, PLANT 3 JERRY'S MIXWELLS

Erlen Miller, **Laura Goss** and **Kathy Bay** are all new in our group.

Bob Wallace and **Carolyn Ladd** are back with us for the summer.

ASSEMBLY, PLANT 1 STAN SAETY'S GROUP

Betty Neuman and **Margaret Stewart** are new trainees in our group.

Darlene Herreid is in the hospital recovering from surgery.

Joan Shepard is now a permanent member of our group.

Strawberry shortcake was served to celebrate the June birthdays of **Erna Clifton** and **Marlene Clark**.

Elections were held and our new group representative is **Marlene Clark**; alternate is **Dorothy Frye**. Social chairman will be **Eleanor Schneider** with **Doris Swanson** as reporter.

Dorothy Frye is the proud owner of a trophy won in the McMinneville drag "powder puff" races.

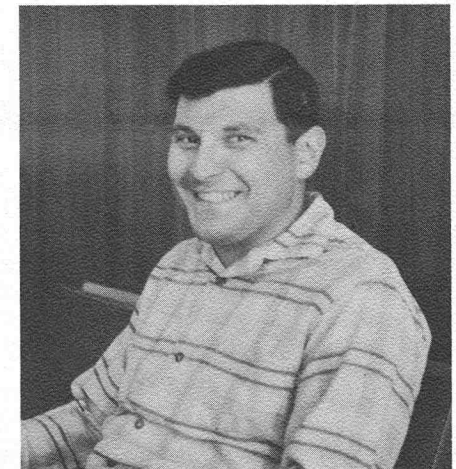
CAPACITORS

Strawberry shortcake was served in Resistors for **Peg Shuman's** third year at Tek, for **Mary Hannabass's** fourth year, and for **Deana McFerran's** sixth year.

A bridal shower was held in Capacitors for **Dee Ann Jones**.

John Rutis transferred to Diode Research.

New faces: **Mary Pregal** (office); **Marian Voss** and **Emma Raymond** (Diodes, days); **Melvin Clark** (Diodes, swing); **Matilda Thompson**, **Grace Austin** and **Norma Hoffman** (Capacitors, swing); **Billie Mae Gup-ton** (Pots); **Susan Wood**, **Sally Rosenberg**, **Cathie Curry**, **Peggy Swanson**, **Caroline Richen** and **Ralph Fisher** (summer help).



FLAG DAY — **JUNE 14**, **Joe Varadi** (Plastics Tooling) received his United States citizenship papers. Joe came to the U.S. five and one-half years ago from Hungary; he started work at Tek two weeks after he arrived. Joe and his wife, Sarah, live in Portland.

ASSEMBLY, PLANT 1 ROGER'S SUPPORTERS

Roger Noyes, **Ella Beaver**, **Freda Medearis**, **Irene David** and **Mable Bean** all brought treats to the group Saturday, June 2.

Lois Rowland, **Joan Olson**, **Marlene Hunt** and **Cy Hardie** were "borrowed" from Plant 3 Cables; **Minnie Menard** and **Doris Erickson** were loaned by Plant 3 Mechanical; and **Delores Corcoran**, **Norlynn Baker**, **Margaret Noble** and **Susan Loader** came up from Plant 2 Cables. All these employees worked with us Saturday night, June 2.

Jean Schulke is new in our Cables group. **Belle Triplett** celebrated her first-year Tek anniversary.

Connie Cundiff switched to swing shift, Wire Prep, replacing **Irene David** who went on days.

ASSEMBLY, PLANT 2 FRIENDSHIP -VII SWINGERS

Two new fellows in our group for the summer are **Tom Martin** and **Dennis Jackson**.

Loretta Merrow returned from maternity leave.

Lalah Smock transferred to our swing shift group from days.

PLASTICS PROCESSING & MOLDING HERB'S HEADACHES

Mary Lee Benner transferred to day shift May 11.

Betty Duffield transferred to our swing shift group from Processing, day shift.

Ardie Ebeling and **Judy Harle** are new girls.

ASSEMBLY, PLANT 2 DON'S DUCKS

Strawberry shortcake was enjoyed by our group to celebrate the June birthdays of **Don McDowell**, **Dotty Pratt** and **Marlene Jones**.

ASSEMBLY, PLANT 3 FRED'S FRAULEINS

Chris Agee terminated June 8; cake was served in her honor.

We welcome back to our group two of our college students, **Bob McKeown** and **Karen Tomlinson**.

FINAL'S PLANT 2, WEST BOB'S VYNACOTERS

Roger Ensrud is new to our group.

Hilbert Hippe will leave Finals this Friday for a two weeks' vacation; on his return he will return to work in Preprod Molding.

Twenty-Eight Tek Golfers At Eastmoreland Tourney

Twenty-four men and four women turned out last Saturday, June 16, for a Tektronix tournament at Eastmoreland golf course. The men played eighteen holes, the women played nine.

The following prizes were awarded to the men golfers: **Waldo Johnson** (low gross, 81); **Neill Martin** (low net, 58—he's Tek handicap chairman!); **Jim Zika** and **Bill Lowery** (tied, second low gross, 83); **Neill Martin** and **Fory Shiflett** (K.P.'s); **Bob Newberry** and **Jim Zika** (long drives); **Gordon Bennett** (long putt).

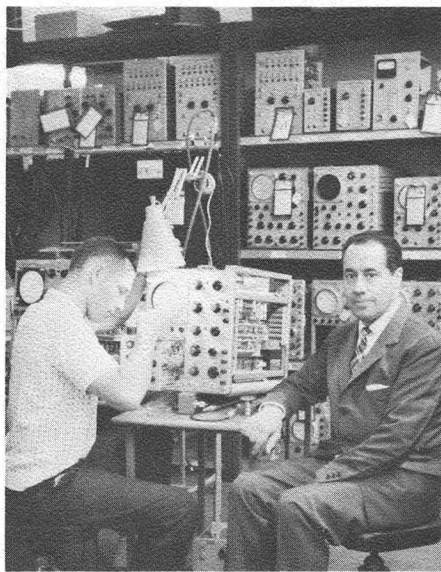
In the women's division **Pauline Johnson** won low gross with 59. She also won the prize for K.P.

A 16-man Tek golf team was named winner of a tightly contested match against Standard Oil two weeks ago, Saturday, June 9, at Meriwether golf club.

By a score of 28½ to 25½ Tek retained possession of a rotating trophy which was initiated three years ago. Standard Oil won it the first year.

Ross Hood shot 78 for low score of the day. **Derald Thornton** had low net for Tektronix. **Ross Hood**, **Kev Van Hoomissen** and **Joe Almand** won K.P.'s and long drives.

Teks who won individual matches were **Ross Hood**, **Derald Thornton**, **Kev Van Hoomissen**, **Joe Almand**, **Doug Taylor**, **Waldo A. Johnson**, **Delano Dalesky** and **Larry Frost**.



CARLOS RAFAEL MARES, Tektronix distributor for Spain, visited the Beaver-ton plant to learn about our manufacturing facilities. He is pictured with **Bernie Floersch** of Factory Instrument Repair. Mr. Mares sent a telex message containing his impressions of the visit to **John Thompson**, Tekintag field engineer:

"Pleased to report really impressed with Tektronix operation. Went through departments which were all first class. Had the pleasure of meeting the company president and was very happy to know how much he knows about Spain and its arts. We hope one day we shall receive him and all friends I have met here. Had aerial view of Portland and vicinity thanks to the kindness of **Scotty Pyle**. Hope you will have a good time in Barcelona."

Tek Baseball Club Splits Pair of Doubleheaders

Tek ballplayers split their second doubleheader in two weeks last Sunday when they met **Selberg's** of Vancouver at **Gabriel park**.

After dropping an 8-10 decision, Tek came back to edge **Selberg's**, 3-2. With two outs and two men on, **Bill Higley** hit a sharp single to put Tek ahead. This decisive hit gave pitcher **Chuck Duquette** the margin for his third win of the season. Tek ended the first half of **Tualatin Valley** league action with a 3 and 3 record.

In the first game of a doubleheader June 10 against **Tillamook**, Tek pitcher **John Gooding** pitched good ball, but lack of support caused Tek to be defeated 7-2. Tek support faltered again in the second game; but some timely hitting by **Bill Hamilton** and **Harve Dethlefs**, and a triple by **Darrel Goodwin** helped Tek to win, 10-8. Pitcher **Chuck Duquette** was credited with a win, although he was relieved in the 7th inning by **Monty Modrell**.

Next Sunday afternoon, June 24, Tek hosts **Tillamook** at **Barnes field**. The game begins at one o'clock.

RIDES WANTED

FROM VICINITY N.E. 25TH: and **Ainsworth** to Bldg. 19, 7-3:30. **Jim Sorensen**, ext. 646 or AT 7-5005. Ride or carpool.

FROM LOMBARD & 14TH PLACE: **Beav.** to Bldg. 47, 7-3:30. **Dolores**, MI 4-0938.

FROM S.W. 62ND: and **Taylor's Ferry rd.** to Bldg. 47, swing shift. **Laura Goff**, Plant 3 Page swing or CH 4-2091.

FROM S.E. 88TH & YAMHILL: to Bldg. 46 or vicinity, 8-5. **Mike Kaplan**, ext. 7513 or AL 4-8607.

FROM N.E. 33RD & GLISAN: to Bldg. 47, days. **Tom Hiestand**, ext. 7145 or BE 2-7897.

FROM 6047 S.W. 46TH: to Plant 2, 7-3:30. **John DeCamp**, ext. 7474.

FROM S.E. 37TH & TAYLOR: to Bldg. 39, 7-3:30. **John Delmore**, ext. 7109 or BE 2-2614.

FROM N.E. 30TH & EVERETT: to Bldg. 47, 7-3:30. **Peter Sheppard**, BE 2-2635.

FROM VICINITY S.E. 122ND: to Bldg. 39, swing shift. **Larry Greisel**, ext. 7796 or MO 5-2351.

FROM N.W. 20TH & NORTHRUP: to Plant 2, swing shift. **Leone Grotte**, ext. 7201 Page or 223-7763 between 12:30-3 p.m.

FROM S.E. 65TH & FLAVEL: to Bldg. 47, 7-3:30. **Warren Anderson**, PR 5-1802.

FROM N. DWIGHT, PORTLAND: to Plant 2, Swing shift; can meet ride elsewhere. **Carol Fillingier**, ext. 7201 Page Swing or 289-6343 days.

FROM GARDEN HOME AREA: to **Beav.** assembly plants, swing shift, for summer. **Ardie Ebeling**, CH 4-4122.

FROM S.E. 13TH & LEXINGTON: to Plant 2, Swing. **Lucille Vance**, ext. 7797 days or 236-8010.

FROM PLANT 2: to vicinity 1600 N.W. 26TH, Portland, Swing. **Jeannie McFarland**, ext. 7796 Swing or CA 8-4449 days.

WANTED

WANT TO TRADE: blonde oak dropleaf dining table, like new, for lge. old-fashioned round oak table. KE 9-3152 after 6 p.m.

HOUSEKEEPER: to live in so wife may care for ill husband. CY 2-2205 before noon, aft. 8 p.m.

WANT TO TRADE: QST's and CQ's or other. Don, ext. 325.

BEDROOM SET: white or paintable; sewing machine cabinet; cedar chest or trunk in good cond. MI 8-5909 or MI 4-5459.

RIDING HORSE: gentle and reasonably priced. **Joe Nelson**, ext. 7467.

FREE

TWO KITTENS: one black, one black & white, 10 weeks old. **Paul Thompson**, MI 4-0584.

THREE KITTENS: grey, housebroken, 3 mos., old. MI 6-1293 days.

KITTENS: healthy, clean. **Archie**, ext. 7409 or MI 4-6656.

FIVE KITTENS: **Chris Radford**, ext. 7698 or MI 4-9019.

HAWAIIAN TOUR

According to **Marie Frazee** (CRT Finishing), coordinator of the annual Tek Tour of Hawaii, the trip has been postponed until later this fall. The tour was originally scheduled for July. A definite date will be announced later, she said.

MISC. FOR SALE:

TYPEWRITER: Olympia portable, pica type, heavy-duty case, good cond., \$80. MI 4-5626.

ENGLISH SETTER PUPS: black, white & ticked. Good hunting stock, \$50. OL 4-5397.

CARRATA COMPETITION KART: w/new power products motor, \$250. MI 4-6766.

6-YR. CRIB: and mattress, like new, make offer. AV 6-0908.

10-FT. FISHING PRAM: new, all fiber-glassed, weighs approx. 100 lbs., \$125. MI 6-1719.

HEATHKIT AMPLIFIER: 12W, Mod. VA-1 & Preamp Mod. WA-P2, \$20. PR 4-7008.

TEETER-BABE: \$3; bassinet, \$5; jumper swing, \$6; radio gear for swap. MI 6-2349.

CRAFTSMAN 6-IN. PLANER: 1/2-hp motor, stand, \$65; thickness planer, 13 x 6, \$185; 2-piston air compressor, \$70. BE 5-1037.

21-FT. CABIN CRUISER: 50-hp Evinrude, galley, head, 2 bunka, canvas cover, fully equipped, \$1800. CA 8-3685.

AKC REG. DACHSHUND: red male, born May 1, champion bloodline, small breed, \$65 w/papers. MI 4-8996.

HOTPOINT DRYER: \$25; 4-ft. round oak table & 6 chairs, extends to 8-ft., \$50. CY 2-1367 or NE 8-7623.

ARIENS ROTOTILLER: 9-hp, \$175. MI 4-1002.

CANVAS AWNINGS: six box type, dark green, \$2 ea.; air cond., dble. fan, best offer. CH 4-2249.

16-FT. THOMPSON: newly painted, 2-tone green, varnished interior, excel. cond., \$160. Bill Cook, ext. 678 or OL 6-8019.

UPRIGHT PIANO: good cond., \$75 or best offer. MI 4-4360.

OIL FURNACE: wall-type, complete w/oil pump & tubing, make offer. Ext. 310 Sunset or MI 8-3787.

21-IN RCA TV: deluxe, walnut w/doors, model 21D-378U, as is; cost over \$500, sell for \$100. MI 6-1846.

ACCORDION: Genoa Americana, \$350. MI 6-2954.

OUTBOARD MOTOR: '56 Johnson long-shaft, 15-hp, \$150. Zane, ext. 7223 or CH 6-4970.

15-FT. SKI TOW: glass over ply., w/all extras, new 60-hp elec. Gale, new trailer, \$1150. Ray, ext. 407.

HOLLYWOOD SPEEDSTER: w/Mark 75 Merc., hardware, lights, controls, Motorola radio, skis, trailer, \$985. Jack Botkin, ext. 447 or BU 5-6027.

WEDDING DRESS: new, size 10, veil, \$49.95; chapel train and crown veil, Jeannie McFarland, ext. 7796 swing or CA 8-4449 days.

MOTOR SCOOTER: Cushman Allstate, good cond., \$95. MI 4-4188.

HOLLYWOOD BED FRAME: w/headboard, single, \$10. Bobbie, ext. 322.

ACME DRESS FORM: never used, \$10; Hamilton Beach elec. mixer w/bowls & juicer, \$10. CA 8-0995.

BC-221 FREQUENCY METER: \$55; SX-101A, \$325; Heath Apache, \$200. MI 6-2356.

DISHWASHER: Lady Kenmore, like new, \$169. BE 4-3165.

HEATHKIT W-5M AMPLIFIER: 25W and SP-2 preamp, both for \$50; Revere tape recorder, \$50. MI 4-1532.

SIAMESE KITTENS: weaned, \$5. Maxine McCabe, Plant 2 Page.

WORLD'S FAIR TICKET BOOK: child's, value \$6.50, sell for \$3.50. Stan, ext. 7437.

EPIPHONE GUITAR: equipped w/amplifier pickup, \$65. CA 3-6979 eves. & week-ends.

HOT WATER TANK: 30-gal. auto. gas, \$25; Torro 18-in. reel power mower, \$35. MI 4-0343.

DESK: solid oak antique rolled-top, excel. cond., \$40. CH 4-2332.

SERVICES AVAILABLE:

OUTBOARD & SMALL ENGINE REPAIR: Dave Lohr, MI 4-1020.

CONCRETE WORK: patio, roofs, etc., by contract or 50-50 plan. Walt, ext. 2245 or CH 6-1867.

PIANO LESSONS: for beginners. Gary Gross, MI 4-5393.

ROOFING: Tek employee w/15 yrs. experience, work fully guaranteed. Errol Livesay, ext. 350 or ME 9-4970.

RENTALS

1-BDRM: unfurnished, apt., 2 min. to Tek, builtins incl. disposal, dishwasher; pool, Beav. Garden court, \$105. MI 4-0221.

2-BDRM: 2/3-acre, Pleasant Valley; just reded., oil furnace, concrete bsmt., washer, dryer, range, refrig., \$80. Gene Single, ext. 232 Sunset or MI 4-0807.

1-BDRM: furn. house on 2 acres, \$55; will sell for \$4750. CY 2-3840 between 5-6 p.m.

2-BDRM: unfurn. house, 3 mi. west Aloha, beautiful setting, \$90 LEASE; avail. July 15. MI 4-8953.

2-BDRM: 3-plex, cement gar., individ. wash. facil.; adults preferred; no pets; 2 adults, \$65, w/1-child, \$70. MI 4-1507, 2820 S.W. 178th ave., Aloha.

3-BDRM: walking dist. Metals bldg.; sale, rent or option to buy. Dian, ext. 7525.

3-BDRM: house, nr. Tek off Farmington rd., liv. rm., dining rm., gar., storage bldg., \$125. Paul Bennett, ext. 570 or CY 2-5057.

2-BDRM: duplex, Hillsboro; range, refrig., sliding glass doors to patio, water pd., avail. July 1, \$90. MI 4-1737.

1-BDRM: unfurn. apt., working couple; water, garb. pd.; wired w/d, west edge Cornelius, \$62.50. EL 7-9814.

1-BDRM: furn. apt. w/carport, Metzger, heat & water pd., \$75. CH 4-5056 aft. 5:30 p.m.

1-BDRM: stove, refrig.; water pd., Beav., \$60. MI 4-8420.

2-BDRM: house, Cedar Hills, refrig., stove, \$105. MI 4-7719.

2-BDRM: Beav., 4 1/2 acres, \$75. BE 5-8071.

HOUSES FOR SALE:

2-BDRM: in Beav. close to schools, shopping; fp, carpets, \$10,050. 376 S.W. 6th. MI 4-7365.

3-BDRM: in Beav., nr. schools, shopping; birch kitch, w/eating area, builtins, dble. gar., patio, \$13,600. MI 4-2701.

3-BDRM: older house, elec. heat, bsmt., low taxes, close in, southeast Portland, \$8250, \$1700 down. BE 6-4511.

3-BDRM: Cedar Hills, fp, hdwd. floors, dinette, att. gar., dishwasher, 60 x 120 lot, lscaped, fruit trees, \$11,500. MI 4-3765.

3-BDRM: dble. gar., builtins, lge. corner lot, small down, assume 4 3/4% loan, pmts. \$91/mo., terms. MI 4-3636, 2605 S.E. Imperial, Beav.

3-BDRM: fam. rm., encl. patio, dble. lot, nr. St. Cecilia's, \$11,800. 625 S.E. 9th, Beav.

3-BDRM: ranch style, fp, att. gar., lge. lot, \$10,950. JE 8-5403, 704 E. 9th, Newberg.

3-BDRM: fam. rm., enclosed back yd., in Hillsboro, \$15,000. MI 8-4287.

3-BDRM: beam ceiling, 96 x 206 lot, less than 1 yr. old, 2 mi. to Tek, \$8995. MI 4-4021.

2-BDRM: fp, lge. liv. rm. w/eating space, carport, lge. lot, Cedar Hills, \$9800. 2960 S.W. 122nd.

2-BDRM: \$3000 lscaping; enclosed Bar-BQ w/fp, cupboards; dble. gar. w/builtins; patio; waterfall; many extras, \$19,500. Lorne, ext. 248 Sunset or CH 4-7349.

CARS FOR SALE:

'60 **MORRIS-MINOR:** 2-dr. sedan, w/w tires, \$795. 292-6049.

'56 **FORD WAGON:** 2-dr., 6-cyl., clean, new tires, good trans., \$395. Bill Ethridge, ext. 7408.

'56 **VOLKSWAGON:** radio, best offer. MI 8-4267 aft. 5 p.m.

'50 **CHEVROLET:** 4-dr., good cond., incl. all access in working cond., \$150. CH 4-4242.

'55 **NASH AMBASSADOR:** V-8, pink & white, cont. kit, elec. wind., power brakes, new nylon tires, \$450. MI 8-4291.

'60 **SPRITE:** r/h, w/w tires, tonneau cover, \$1000. AT 8-2895.

'61 **MONZA:** white w/red interior, 4-sp. dual pipes, take over pmts. Teddie Cox, ext. 7796.

'50 **DODGE:** 4-dr., clean, gd. second car, make offer. MI 8-5237.

'56 **CHEVROLET:** 1/2-ton pickup, good tires, excel. cond., \$1050. Dick Adamson, ext. 7442 or EL 7-3938.

'60 **SPRITE:** excel. cond., \$1195. George Miner, ext. 7796 or MI 6-1832 eves.

'55 **CHEVROLET:** 4-dr. wagon, V-8, r/h, good w/w tires, clean interior, \$695. MI 4-4147.

'62 **CORVAIR MONZA:** black, 4-speed box, red interior; no equity, assume pmts. Ron Thomas, MI 6-2312.

'50 **RAMBLER AMERICAN:** 2-door, convertible, \$50. CH 4-4930.

'57 **CHEVROLET:** station wagon, V-8, 4-dr., r/h, powerglide, top shape, \$1195. Roy Harden, ext. 7512 or AT 8-2895 eves.

'58 **IMPERIAL:** Crown convertible, beautiful cond., reas. gas mileage, fabulous buy at \$1795. CH 6-9011 aft. 2 p.m.

'53 **FORD PICKUP:** 1/2-ton, \$395 or best offer. Gordon, ext. 7219 or MI 8-2678.

WANTED

CHILD CARE: for 9-yr-old boy, vicinity S.W. Cameron & Shattuck rd. Audrey, ext. 316 Swing or OL 4-0981.

WANT TO RENT: house trailer, 11-13 ft., Sept. 28 for 8 days. Will be used by one person. Joe Meswick, CY 2-1559.

CAR: price \$200-300, prefer Ford, Chevrolet or Plymouth, good cond. Jack, ext. 7504.

WANT TO SHARE APT.: w/cultured woman of 35; Castlewood Arms, pool, air cond., insured. MI 6-2837.

RIDER: to share expenses and driving to St. Louis, Mo., lv. Portland July 2. MI 4-0375.

CHILD CARE

HIGH SCHOOL GIRL: MI 4-5519.

NEAR BEAVERTON AIRPORT: infants or children; also sewing and alterations. MI 4-8345.

MARLENE VILLAGE: my home, week-days, 6 a.m. to 5 p.m. MI 4-6766.

MY HOME: exp., 1 or 2 children, reas. rates, references, 10320 N.W. Cornell rd. CY 2-2046.

NORTH ST. JOHNS: my home, days. AV 6-0838.

FOR SUMMER: my home, days. MI 4-2851.

ACREAGE

CHOICE LOTS: Depoe Bay. Will build to suit. Price varies. CH 6-1218.

FOREST GROVE: 1 1/4 acres, in city limits, 1 block from school, adjacent to new development. MI 8-1293.

statistics

MARRIED:

Helen Kaizer (Assembly, Plant 2) and **James L. Martin**, May 26.
Claire Tuttle (Assembly, Plant 2) and **Roger Almquist**, June 9.
Stella Beasley (Plastics) and **C. Jack White**, May 28.
Alice Delplanche (Mechanical Assembly, Plant 1) and **Robert Vuylsteke**, June 2.
Ethel Holbrook (CRT Gun Wiring) and **Joe Brown**, April 27.
Eyla Bidwell (Assembly, Plant 3) and **Frank Allen Thompson**, June 4.
Dave Jensen (Scopemobiles) and **Marlene Boyer**, May 4.
Ken Charters (Test, Pl. 1) and **Karen Olsen**, June 8.
Dick Machlan (Test, Pl. 1) and **Lillian Konzelman**, June 17.
Delbert Knapp (Assembly, Pl. 3) and **Sandra Miller**, June 15.
James Parri (Ceramics) and **Judith Lee**, May 19.

BORN:

To **Art and Kathryn Putney** (Finals, Plant 3), a son, **David Neil**, 7 lbs. 5 oz., May 9.
To **Doyce and Judith Brown** (Finals, Plant 3), a son, **Brett A.**, 8 lbs., May 12.
To **Gary and Roberta Siewell** (Assembly, Plant 3), a daughter, **Kirsten Joan**, 8 lbs. 2 oz., May 27.
To **Bob and Mary Foreman** (Photography), a son, **David Robert**, 7 lbs. 10 oz., June 5.
To **Roger and Johana Maxfield** (Electrochem. Mech. Processing), a son, **Randy Allen**, 8 lbs. 7 oz., June 4.
To **Dick and Arlene Hart** (Unit Wiring, Plant 1), a son, **Vern Phillip**, 7 lbs. 9 oz., June 7.
To **Jerry and Jeanette Albright** (Finals, Plant 1), a daughter, **Doni Louise**, 8 lbs., June 1.
To **Eldon and Joan Hoven** (Capacitors, Diodes), a daughter, **Julie Dawn**, 7 lbs. 10 1/2 oz., June 7.
To **Ken and Maxine Hoggatt** (Capacitors), a son, **Todd Warner**, 11 lbs. 1 oz., June 1.
To **Bud and Darlene Green** (Stock Whse.), a daughter, **Melinda Susan**, 7 lbs. 13 oz., May 9.
To **Gary and Pat Steerman** (Stock Whse.; Customer Service), a son, **Mark Gene**, 6 lbs. 14 oz., May 29.
To **Wes and Mildred Costa** (Test, Plant 1), a son, **David Charles**, 7 lbs. 3 oz., June 7.
To **Bernie & Pauline Rilatt** (Data Systems), a daughter, **Bernadette Marie**, 6 lbs. 13 oz., June 13.
To **Jim & Rosellyn Garner** (Resistors), a son, **Bret James**, 7 lbs. 5 1/2 oz., June 7.
To **Cleo & Geri Moser** (Assembly, Pl. 2), a daughter, **Teri Lin**, 7 lbs. 10 oz., May 31.
To **Don & Barbara Croy** (Assembly, Pl. 1), a daughter, **Judy Ann**, 5 lbs. 10 oz., May 28.
To **Ray & Goldie Greco** (Electrochemical), a son, **Gary Ray**, 7 lbs. 10 oz., June 11.

GILBERT & SULLIVAN

Employees have until 4:30, Monday, June 25, to purchase scrip books for Gilbert & Sullivan performances. Books with a trade-in value of \$7 will be sold for \$6. Contact Pat Richardson, IO receptionist, extension 401.

Tekweek

TEKWEK is published every Friday for Tektronix employees by the Communications department in cooperation with the Graphic Arts group, the Printing department and the Photography department. Send all copy to Tekweek, delivery station 74-298. Copy deadlines: ads and departmental news, Friday noon; general news, Monday noon. Carol Day, editor; Becky Short, co-editor; extension 405.

Tekaqua President Reports All Activities Successful

Tim Kirtley (Manufacturing Tooling), Tekaqua president, reports that the club's Swim Nite, Cruise-Thru-the-Locks and the rummage sale were all successful. He thanked all club members and employees who worked on committees.

A first for the Tekaqua water sports club this year was its participation in the Rose Festival Marine Day parade, June 10. Tim said the club had an outstanding representation at the event and walked away with second and third prizes in the small boat class.



We gratefully acknowledge your kind expressions of sympathy at the death of our father, Mr. C. H. Van Hoy.

**Juanita Sexton, CRT Gun Wiring
Irene Foxton, C/S Order Proc.**

The many kindnesses and expressions of sympathy during our bereavement at the loss of our beloved husband and father, Don Sherman (Plastics Processing), are deeply appreciated.

**Mrs. Arlene Sherman,
David & Deanna**

I wish to express my thanks for the expressions of sympathy and the donation to the Cancer fund at the death of my father, William T. O'Connor.

**Arleta Wahlers,
Engineering**

We wish to thank all our friends at Tek for the kindness and sympathy expressed at the death of our son.

**Vivian Weaver and family,
Wire Prep, Plant 3**

My thanks to all my friends for the cards and flowers I received during my recent illness.

**Florence Jones,
CRT Finishing**

I thank all the employees at Tektronix for the thoughtfulness and kindness expressed at the loss of my husband, Roger.

Mrs. Lsila Moore

job postings

Tektronix employees should contact Alice Kida, ext. 7620 (8-7620 from Sunset) to apply for positions listed in JOB POSTINGS.

CALIBRATION ENGINEER: man to work day shift for the Custom and Militarized Instruments department of Plant 3, Instrument Manufacturing (J.P. no. 4901). **FUNCTIONS:** calibrate custom and militarized instruments. **QUALIFICATIONS:** oscilloscope calibration experience; ability to do high quality work.

TYPIST — JUSTOWRITER OPERATOR: woman to work day shift for the Field Information group of the Field Engineering department of Domestic Marketing (J.P. no. 4107).

FUNCTIONS: prepare material for field information publications by typing prepared copy of the Justowriter. **QUALIFICATIONS:** typing accuracy and ability to perform detailed work; some mechanical aptitude; ability to follow established formats and procedures and to work under pressure without close supervision; knowledge of graphic processes helpful.

Q. C. INSPECTOR: woman to work day shift in the Production Engineering Quality Control group of CRT Manufacturing (J.P. no. 1693).

FUNCTIONS: inspect incoming materials and in-process work on a sample basis. **QUALIFICATIONS:** ability to do repetitive work and to read mechanical drawings; experience with micrometers, vernier calipers and indicators desirable.

SECRETARY: woman to work day shift for the General Manager's staff of Domestic Operations (J. P. no. 3037).

FUNCTIONS: take dictation, transcribe correspondence and reports, including statistical material; schedule appointments, meetings; answer phone, receive and relay messages; set up and maintain files. **QUALIFICATIONS:** good shorthand and typing ability; knowledge of company organization and operation; fluency in oral and written expression; organizational ability; general business experience.

CLERK-TYPIST: woman to work day shift in the Photography group of the Production Services department of Instrument Manufacturing (J. P. no. 1123).

FUNCTIONS: type forms, reports and letters; record and distribute minutes of management meetings; maintain confidential file for manager; furnish information on operating policy to people; perform scheduling duties in scheduler's absence; receive and route incoming calls and visitors. **QUALIFICATIONS:** secretarial skills; ability to make simple computations; discretion; pleasant personality; good telephone voice.

MECHANICAL ASSEMBLER: woman to work day shift for the Precision Mechanical Assembly department of Fabrication and Molding (J.P. no. 167).

FUNCTIONS: assemble component parts into sub-assemblies; make hand tests on operation of each part; make micrometer dimension tests; maintain records of assembled part dimensions. **QUALIFICATIONS:** ability to remember numbers and number details; finger dexterity; ability to use either hand independently; hand and eye coordination; understanding of mechanical principles and devices; ability to use hands and arms rapidly, to be accurate and orderly in handling details, to adapt to changing circumstances. Applicant must have color vision.

LOST BOOK

Optics and Spectroscopy, January 1962 issue. If you have this periodical please contact the Library, ext. 388.