

TYPE P6046

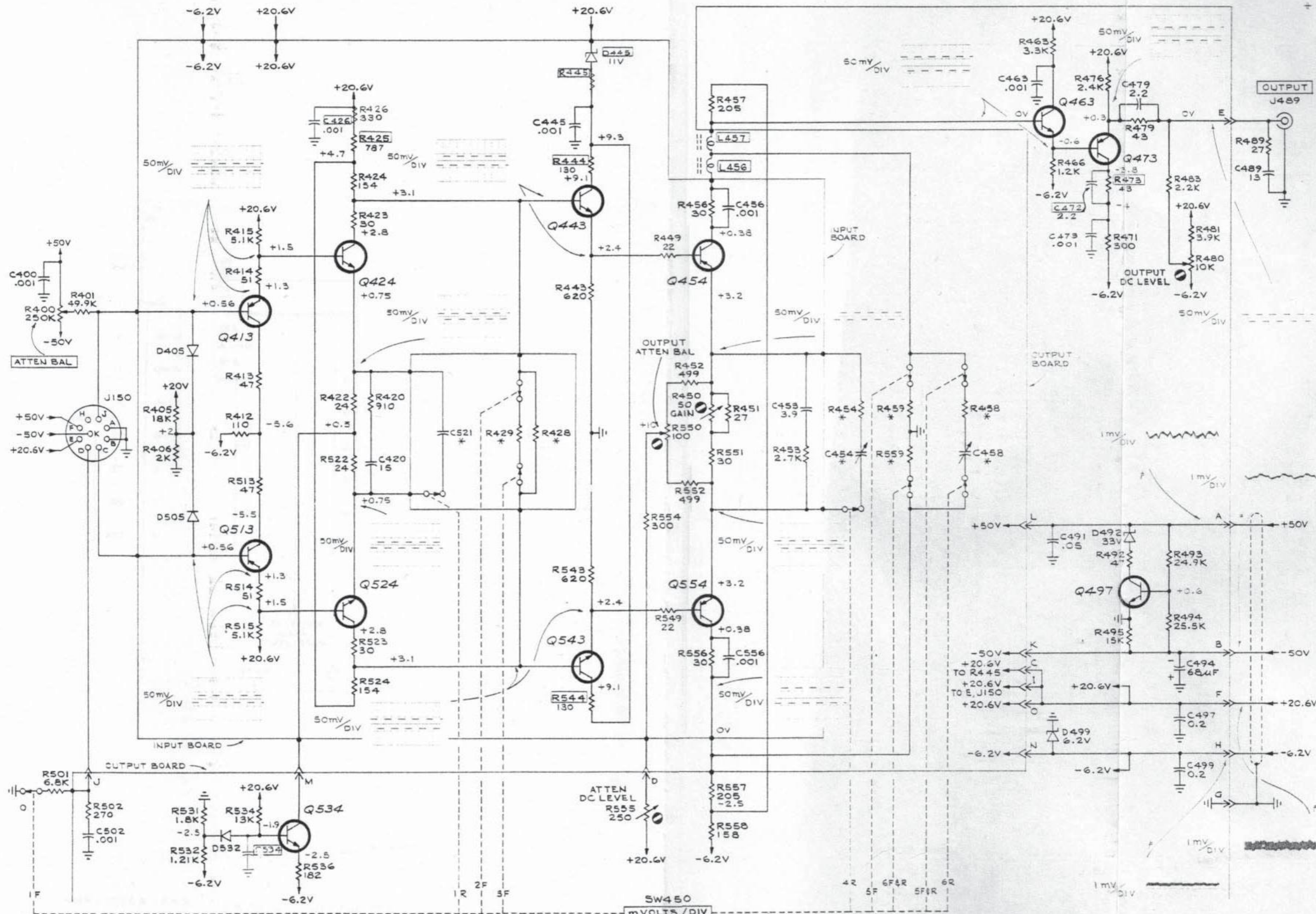
DIFFERENTIAL PROBE

VOLTAGES AND WAVEFORMS APPLY UNDER CONDITIONS GIVEN AT THE LEFT OF THIS DIAGRAM.  
SWEEP RATE: 0.5ms/DIV

\* BOOTSTRAP EFFECT CAUSES ALMOST IDENTICAL WAVEFORMS AT THESE POINTS DURING LOW-FREQUENCY SINGLE-ENDED OPERATION  
\*\* FET BIAS VARIES BETWEEN INSTRUMENTS; 0 TO 2 VOLTS FOR Q113 AND Q213 (MATCHED); 0.3 TO 1.8 VOLTS FOR Q123.

SEE PARTS LIST FOR SEMICONDUCTOR TYPES  
† MATCHED PAIRS: Q113-Q213; Q134-Q234; Q154-Q254; C101-201

SEE PARTS LIST FOR EARLIER VALUES AND SERIAL NUMBER RANGES OF PARTS MARKED WITH BLUE OUTLINE.

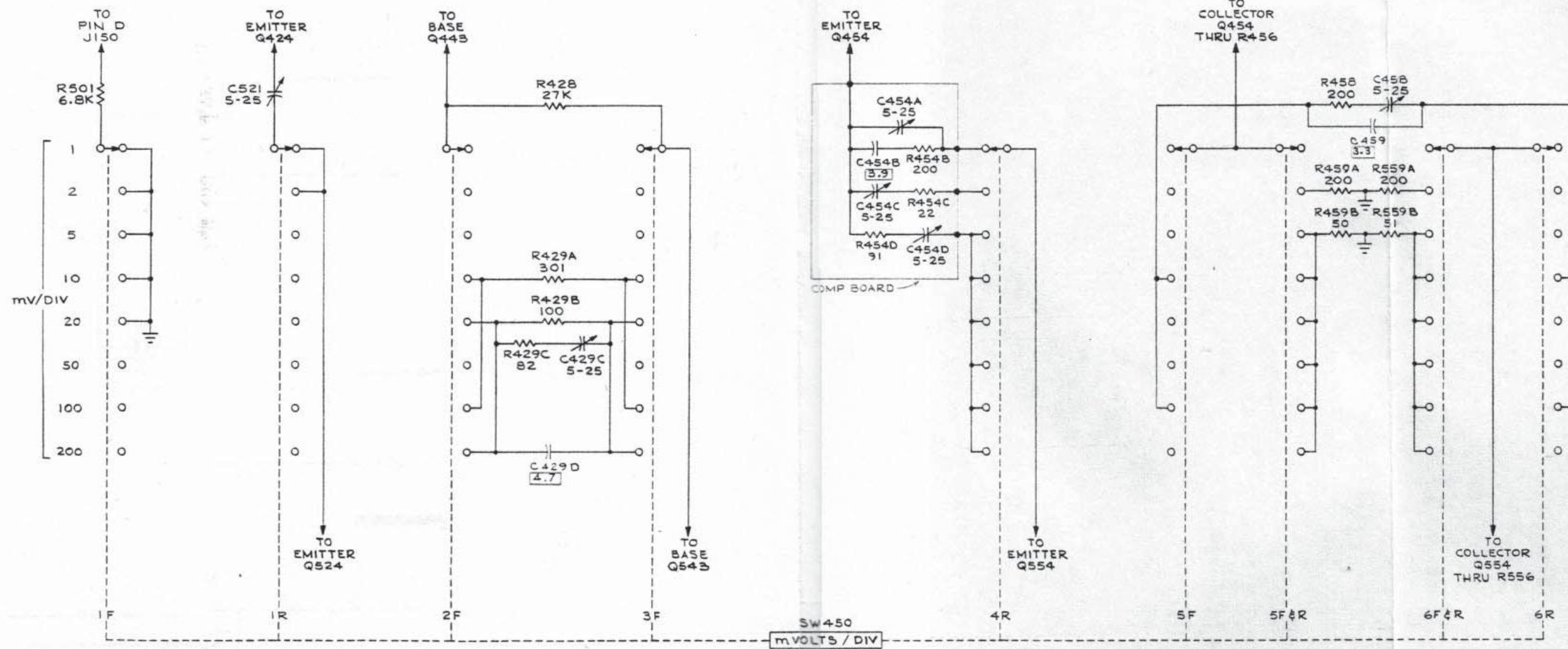


VOLTAGES AND WAVEFORMS APPLY UNDER CONDITIONS GIVEN AT THE LEFT OF THE PROBE DIAGRAM

† NO SIGNAL INTO P6046 PROBE; LINE TRIGGERED 5ms/DIV HORIZONTAL SWEEP

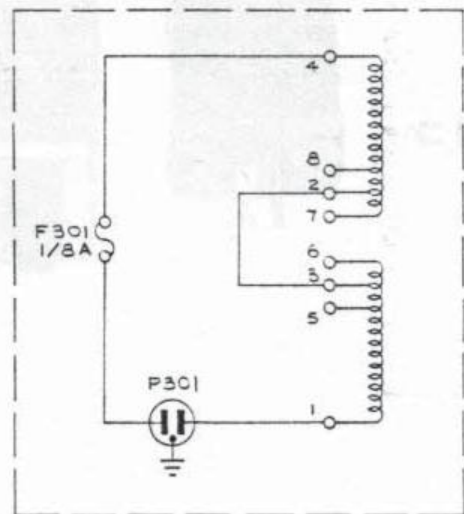
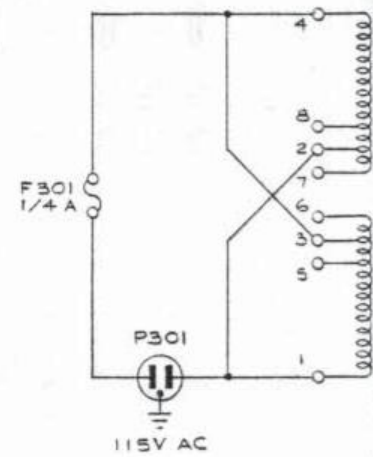
\* FOR DETAILS SEE mVOLTS/DIV SWITCH DIAG

SEE PART LIST FOR SEMICONDUCTOR TYPES

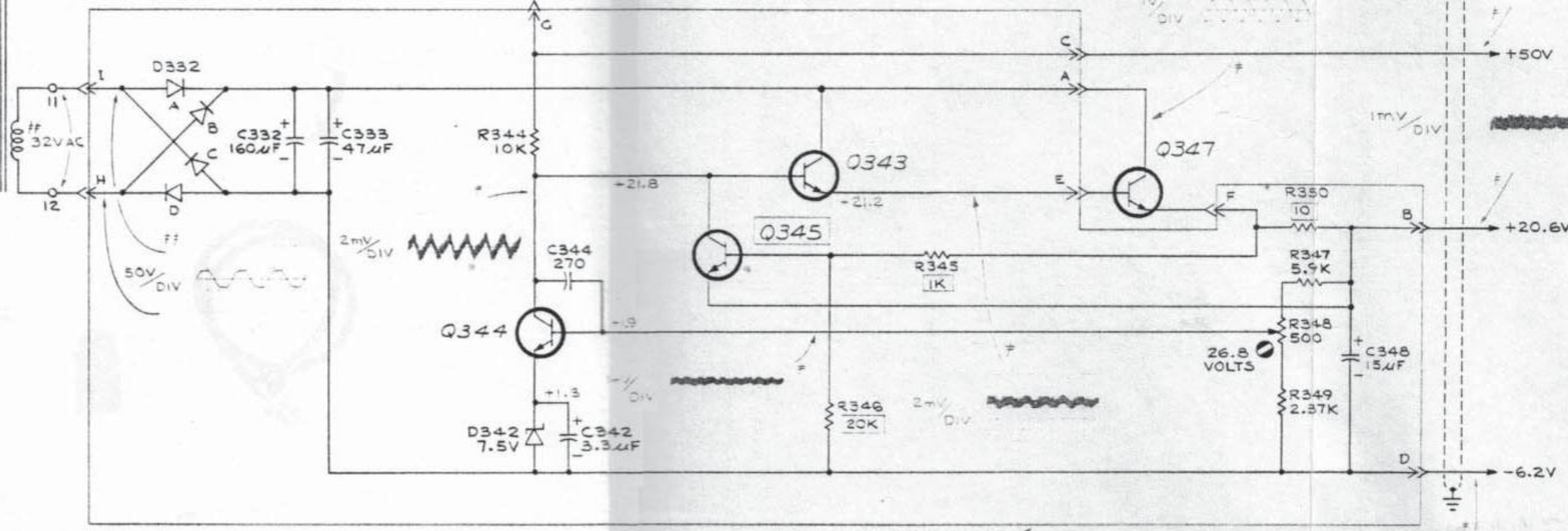
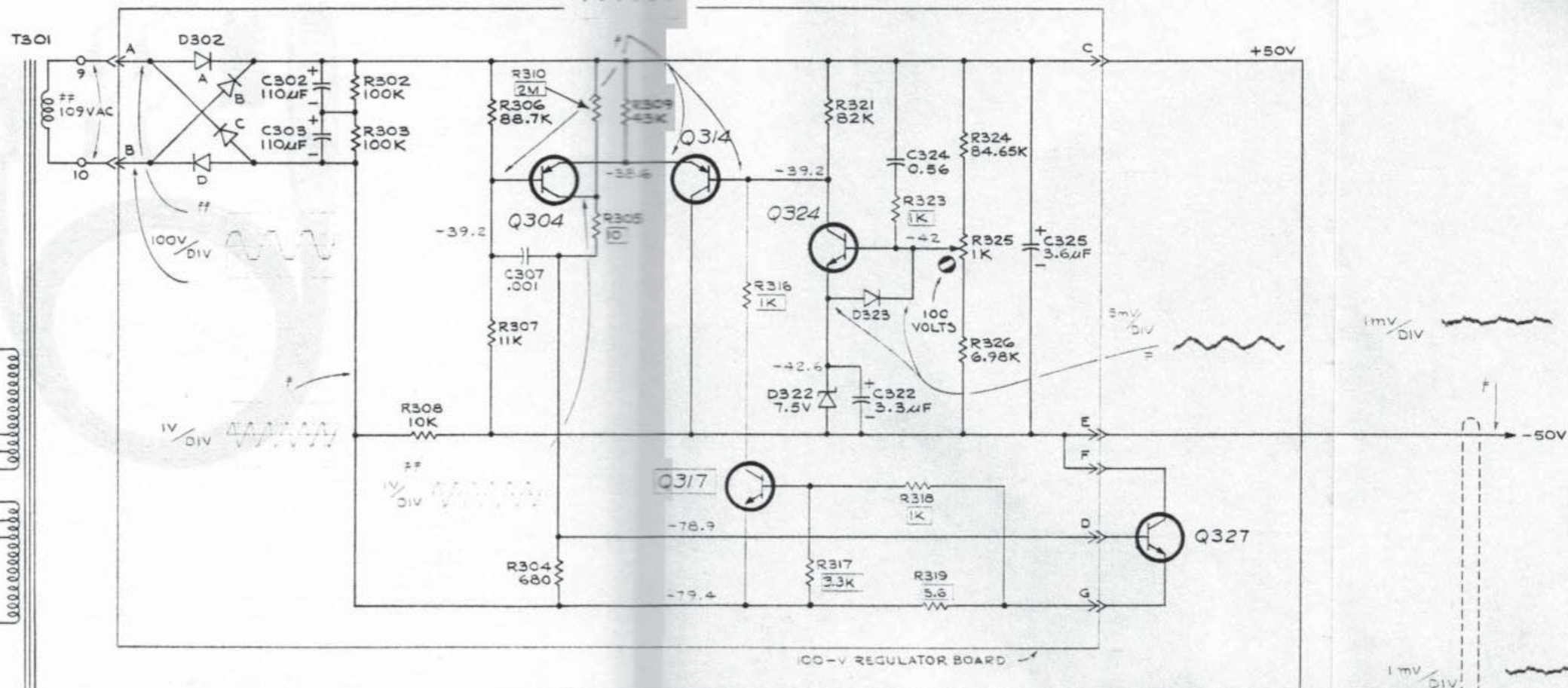


SW450  
mVOLTS / DIV

SEE PARTS LIST FOR EARLIER  
VALUES AND SERIAL NUMBER  
RANGES OF PARTS MARKED  
WITH BLUE OUTLINE.



ALTERNATE T301 PRIMARY WIRING DIAGRAM—  
230V AC OPERATION



VOLTAGES AND WAVEFORMS  
APPLY UNDER CONDITIONS  
GIVEN AT THE LEFT OF  
THE PROBE DIAGRAM

\* NO SIGNAL INTO P6046 PROBE; LINE TRIGGERED 5ms/DIV HORIZ SWEEP  
\*\* DIFFERENTIAL MEASUREMENT BETWEEN POINTS INDICATED

SEE PARTS LIST FOR  
SEMICONDUCTOR TYPES

SEE PARTS LIST FOR EARLIER  
VALUES AND SERIAL NUMBER  
RANGES OF PARTS OUTLINED  
OR DEPICTED IN BLUE.