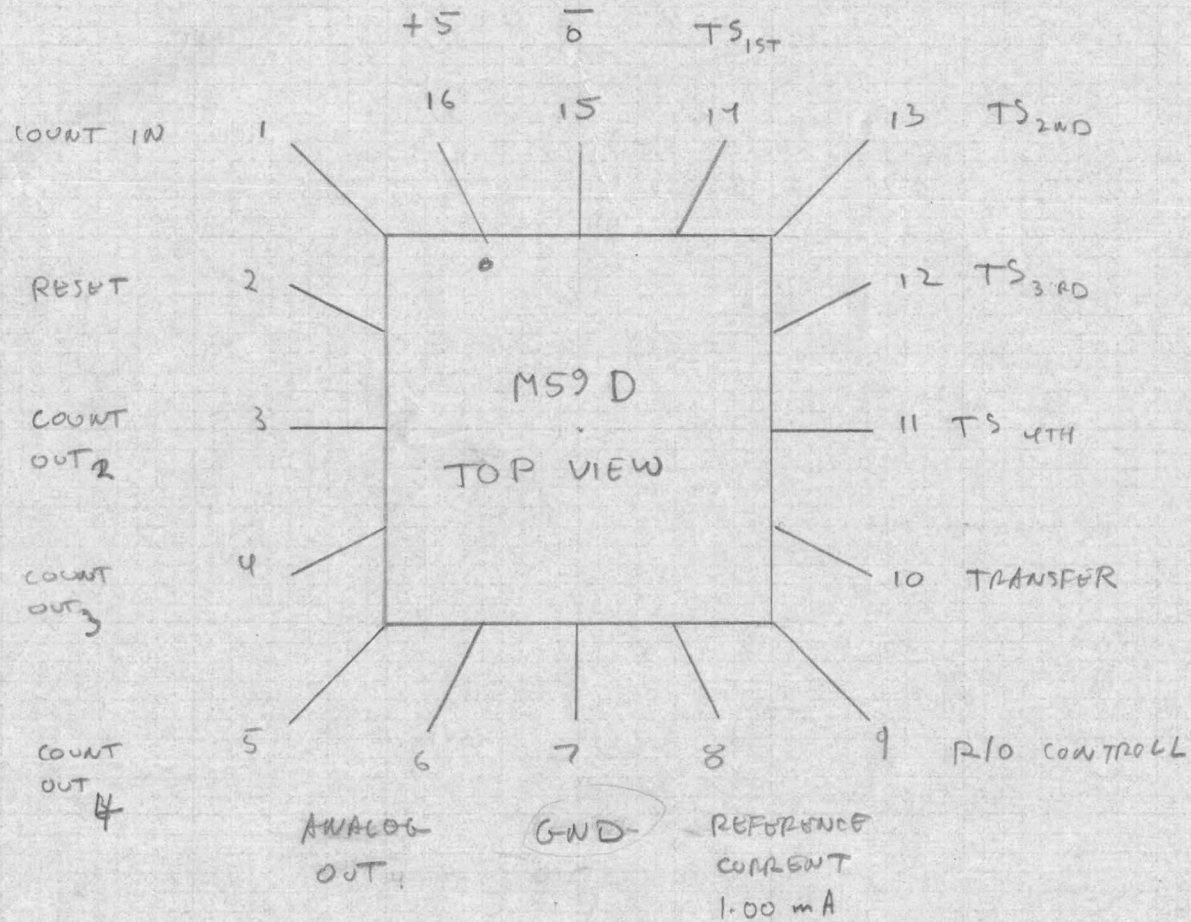


M⁵D

Nov 17, '71

MIKE METCALF
GEO CLARK



PIN 7 SUB

INPUTS HAVE A DECISION LEVEL OF 1.4V ABOVE VEE @ 50mA

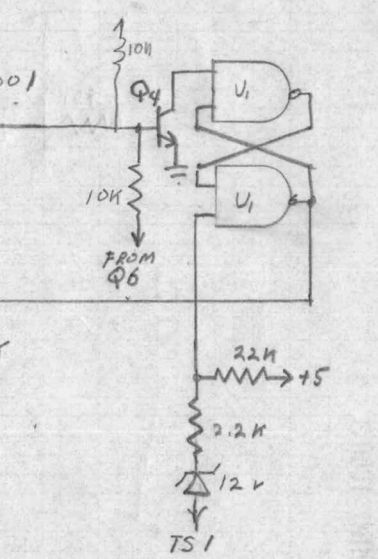
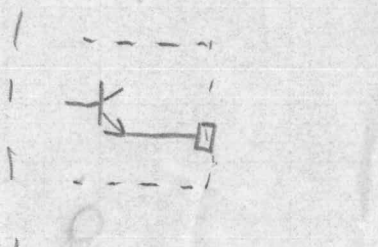
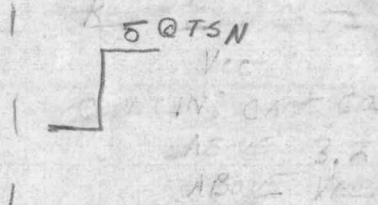
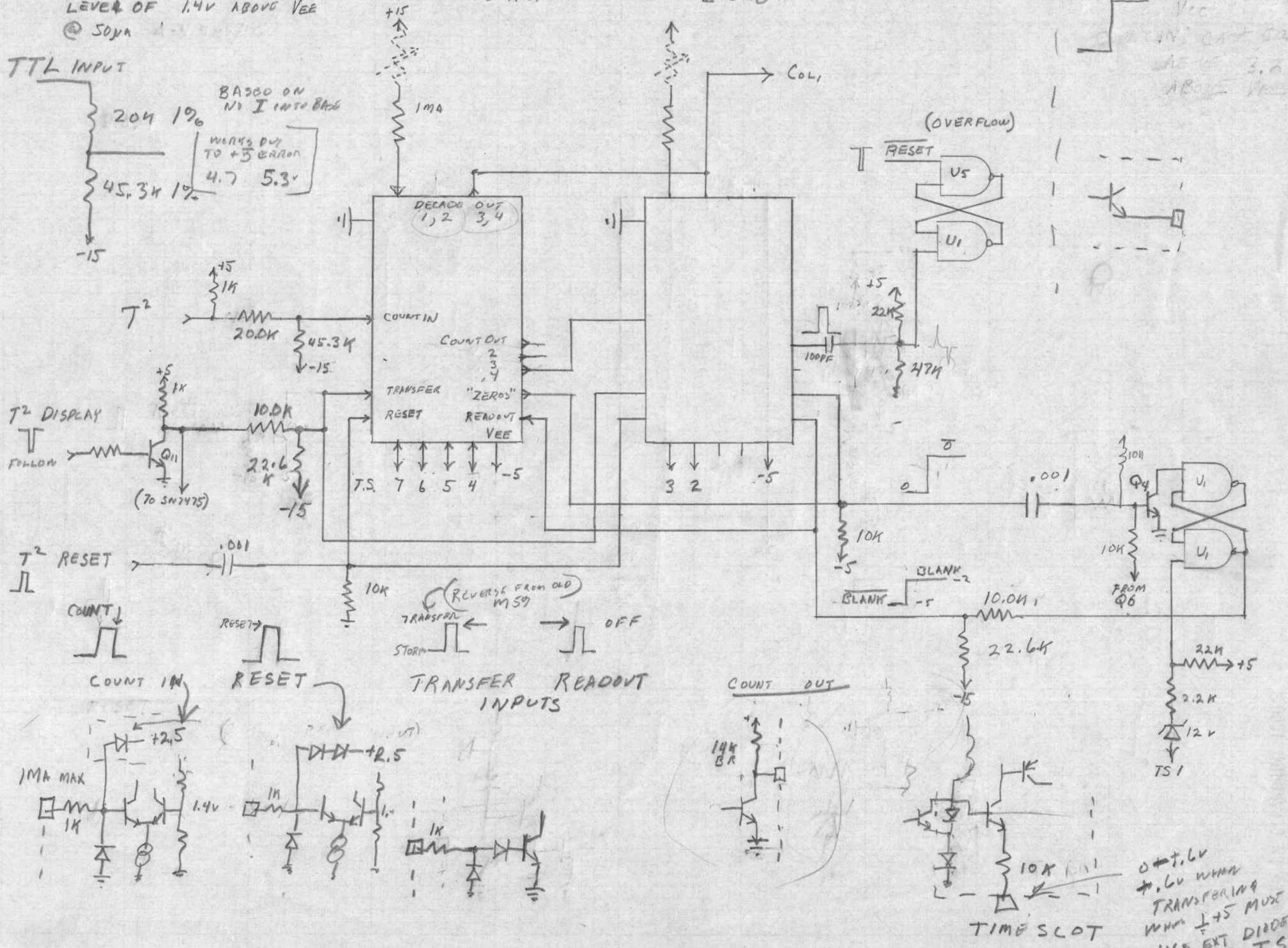
-5 SUPPLY CAN VARY $\pm 5\%$

M59

"ZEROS" OUTPUT

TTL INPUT

BASED ON NO I INTO B&C
WORKS DUE TO $\pm 5\%$ ERROR
4.7 5.3V



0 to +1.6V when TRANSFERING when +5V MUSE USE EXT DIODE TO T.S.