

# Tekweek

VOL. 4, NO. 9

TEKTRONIX, INC.

JUNE 7, 1963



**ROADWORK** has been under way for two weeks on Tektronix industrial park. The road is being constructed to provide a permanent access to the CRT building parking lot. It will eliminate dust problems and the high cost of maintenance for the previous gravel road. Due for completion next week, the road will be used by CRT and Materials Handling employees. R&H construction company is doing the excavation, grading, rock base placement and culvert and water pipe insertion. Paving contractor will be selected upon receipt of bids.

## Data Delay Seen For Period 213

Profit share for Period 213 will not be announced on the loud-speaker or posted on the bulletin boards next Thursday because the fiscal year has ended and all financial figures will not have been received. However, figures will be announced and posted as soon as they are known.

Employees are reminded that their paycheck on June 14 will not include cash profit share. Profit share will be part of the midyear profit share check issued with TEKEM shares.

Les Stevens, Finance Personnel and Payroll manager, said the actual day of issue will depend on a number of factors, including when financial data arrives from our overseas offices. The profit share check and TEKEM shares will probably be issued during the week ending June 22.

TEKEM share price, effective May 21, is now \$6.70. This is the sixth increase during the calendar year 1963.

## ECP Symposium Agenda Published **New Tek Paycheck Stub to Include Savings Bonds Deduction Block**

Thirty major technical papers will be presented at the Fourth International Electronic Circuit Packaging symposium at the University of Colorado August 14 to 16.

The papers will be devoted to histories in ground equipment packaging and airborne/space equipment packaging, packaging standards and interconnections, trends in microelectronics, packaging with advanced fabrication techniques and packaging for hostile environments.

Registration forms and information on accommodations and transportation may be obtained from Dr. Sherman Sheffield, Bureau of Continuation Education, 352 Chemistry Building, University of Colorado, Boulder, Colorado. The event is sponsored by the university and Cahners Publishing Co., publishers of Electrical Design News and Design News.

Teks attending the 1962 symposium as audience participants were Jay Chiodo (Mechanical Instrument Design), Dick Ropiequet (Future Products Engineering) and John Reichen, Keith Sessions and Archie Yergen (Militarized Products Engineering).

### Group Transfers To MQA

The Linear Standards function was transferred from F&M Production Engineering to Manufacturing Quality Assurance recently, another step in the reorganization of F&M started last November.

Ed Morgan and Jerry Palfenier now report to Dave Barr of MQA, although the operation will not be moved from the Metals building. The Linear Standards office will continue to provide the same service to all areas.

Tektronix US employees will receive a new check-stub form beginning with the payday on Friday, June 14.

Les Stevens, Finance Personnel and Payroll manager, said the new form has been redone with blocks added or deleted to permit a more logical arrangement and inclusion of more meaningful data.

For example, the profit-share section has been revised to conform to the current profit share policy. The new blocks for profit share base, percent, amount and advance will be used for monthly or semi-annual profit share as appropriate.

As TEKEM stock is distributed only twice a year, no special deduction was provided for the cost of the shares. This will appear in the "Miscellaneous" block with the "TEKEM" printed in front of

the amount.

New blocks added are US Savings Bond deduction, bonds issued and deductions accumulated, and year-to-date sick pay and UGN deductions. The year-to-date sick pay is the amount paid during the calendar year but is not necessarily the amount to be deducted as sick pay on income tax returns. To determine the correct sick pay deduction, employees must compute their deductible sick pay as specified in the tax forms. Year-to-date UGN reflects payroll deductions only and will not include any cash payments made through Tektronix during the annual drive.

The check will also have minor revisions. The amount of the check will be in figures only. All the writing will be on one line for simplification and easier reading.

### Savings Bonds Plan Deadline Is Today

US Savings Bonds program enrollment cards were distributed to all employees last week. Those who are interested in setting aside a certain amount of each paycheck toward the purchase of bonds should complete the card and return it to their division office no later than today.

The first paycheck deduction will be made from the June 28 paycheck.

At a recent meeting of group representatives, Howard Vollum suggested that employees examine their present savings program. If it is not sufficient, he strongly recommends the Payroll Savings Plan for US Savings Bonds.

STATEMENT OF EARNINGS AND DEDUCTIONS												No. 505034	
PERIOD ENDING		PAYROLL CODE	DEPT.	L. O. S.	SICK HOURS			VACATION HOURS					
					ACCRUED	TAKEN	ACCUMULATED	EARNED	TAKEN	ACCUMULATED			
MAKEUP OF CURRENT GROSS EARNINGS													
PROFIT SHARE BASE	%	P. S. AMOUNT	P. S. ADVANCE	PAY AT BASE RATE	O. T. PREMIUM	SHIFT DIFF.	VACATION PAY	SICK PAY	MISC.	GROSS PAY			
1													
DEDUCTIONS													
BONDS	CREDIT UNION	U. G. N.	INSURANCE	GIFT FUND	E. B. A. F.	MISCELLANEOUS	FED. W/H TAX	F. I. C. A.	STATE W/H TAX	NET PAY			
2													
YEAR - TO - DATE													
BONDS		SICK PAY		U. G. N.		FED. W/H TAX		F. I. C. A.		STATE W/H TAX		GROSS EARNINGS	
ISSUED	ACCUMULATED												
3	4	5											
L. O. S. - LENGTH OF SERVICE E. B. A. F. - EMPLOYEE BENEFICIARY ASSISTANCE FUND													
DETACH THIS STATEMENT BEFORE CASHING AND RETAIN FOR YOUR PERSONAL RECORD OF EARNINGS AND TAX PAYMENTS													

**NEW PAYCHECK-STUB FORM** for Tektronix US employees effective payday, June 14, has been re-arranged as follows: (1) simplified profit-share section; (2) US Savings Bonds deduction block; (3) US Savings Bond issued and accumulated; (4) sick pay year-to-date and (5) UGN year-to-date. See story for details.

# Employee Attends Foundation Lecture; Gives Report

By Al Dvorak  
Policies & Procedures

Physicists have been active in trying to develop a useable theory of the atom's nucleus since the discovery of the neutron 31 years ago, but the field is still wide open today, Dr. Steven A. Moszkowski, UCLA physics professor told an interested audience at Portland State college Tuesday, May 28. The lecture was sponsored by Tektronix Foundation.

Dr. Moszkowski said physicists have been seeking a model which would describe the behavior of the atom's nucleus. "A model,"

he explained, "is a picture used to represent a phenomenon that we wish to study but which we cannot observe directly. A good model should be simple and yet should tie together observed behavior well enough to help us understand it."

(Scientists use a model when they say an atom is like a miniature solar system with electrons traveling around a nucleus like planets around the sun.)

Among the nuclear models proposed by physicists, the lecturer described the "potential well" and "liquid drop" models. The "po-

tential well" parallels the model of the atom and represents the nuclear particles as being in orbital motion. The "liquid drop" represents the nuclear particles as being closely bound together like the molecules in a drop of water and not able to move in free paths.

Dr. Moszkowski noted that Enrico Fermi, the physicist and Nobel prize winner who helped develop atomic energy, performed experiments in bombarding atomic nuclei with neutrons. Fermi's results tended to disprove the "potential well" idea and strengthen the "liquid drop" model. However, later work by Maria Mayer, American physicist, combined some of the ideas from each and brought forth the "complex potential well" model of the nucleus. Dr. Moszkowski used slides to illustrate differences between these three models.

"We now believe," said Dr. Moszkowski, "that the phenomena we observe in our experiments on atomic nuclei are caused by forces between nuclear particles which are different from the static electric forces which act between atomic particles. Unlike the static electric forces which are continuously attractive or repulsive, these forces are attractive at a distance and repulsive at a very short range."

## Dutch Officials Slate Heerenveen Plant Visit

Dutch governmental officials and industrial leaders will visit Tektronix Holland N. V. in Heerenveen next Thursday, June 13, reports Earl Wantland, European Manufacturing manager.

They include, among others, Mr. Linthorst Homan (Queen's Commissioner of Friesland), Mr. van der Meulen (Burgomaster of Leeuwarden), Mr. Byron C. Blankenship (American General Consul in Amsterdam) and his wife, Mr. Okma (Provincial Deputy charged with Industrialization), Mr. Foppes (ETIF Institute for Industrialization in Friesland), Mr. Otten (Secretary of the Chamber of Commerce for Friesland) and Mr. Huisman (Burgomaster of Heerenveen).



DAVE SPINKS (former Guernsey Personnel manager) arrived in Beaverton Monday to report to his new assignment in domestic Manufacturing. A Tek employee since September 1954, Dave had been in Europe since November 1958.

## Office Opens June 1

A new field office in Walnut Creek, California, will open June 1. The Lafayette office which formerly served this area will close next Friday, May 31.

Field engineers for Walnut Creek are George Obinger, Joe Simpson and Tony Bryan. Doris Duclos and Barbara Karcher are secretaries.

The address is 1709 Mt. Diablo blvd., Walnut Creek.

## Cover Shows Scope

The front cover on the May 25 issue of "Business Week," a nationally-circulated business weekly published by McGraw-Hill, shows a Type 543A Tektronix oscilloscope beside Mr. William C. Norris, president of Control Data Corporation.

Another photo of the scope appears on page 158 of the magazine in an article about CDC.

# Teks in the News



John Schmauder (Research) is attending the 8th Symposium of the American Scientific Glass Blowers Society in Chicago. The three-day conference ends today.

Dave Weiser (Library manager) will attend a special Library Association conference in Denver, Colo., next Sunday through Thursday.

Newt Espe (IMPS Engineering Contact manager), Jay Chido (Mechanical Instrument Design) and Will Auran (MSE) were in New York to attend the National Electronic Packaging and Production conference Tuesday, Wednesday and Thursday.

Tom Williams (Plant Supporting Services manager) presented an oscilloscope demonstration and showed the film, "Tektronix on the Isle of Guernsey," at the Portland Air Cargo Association dinner-meeting May 15. Harold Fritzler, Merlin Miller and Bob Womack (all of Traffic) were also guests for the "Tektronix Night."

Jerry Blank (Controller's staff) was recently elected treasurer of the Portland Chapter of the Institute of Internal Auditors.

**SPEAKER ON "Design Fundamentals of the Basic Package"** at the National Electronic Packaging and Production conference in New York City this week was Frank Maniatis (Military Products Engineering). Over 100 manufacturers demonstrated equipment and materials at the NEP/CON exhibition.

## Teks Write Articles

The May issue of "Industrial Electronic engineering and maintenance magazine included articles written by Joe Nelson (Manuals) and Clif Roberts (Advertising).

Joe's article, "Just How Accurate Are We?" is an inventory of capabilities, designed to acquaint engineers and technicians with the present status in the field of precision measurements.

"Photographing Oscilloscope the precautions to take to get good theprecautions to take to get good trace recording without wasting film.

TEK WEEK is published every Friday for Tektronix employees by the Communications department in cooperation with the Printing and Photography departments. Carol Day, editor-writer; Jane Martin, staff writer; Graphic Arts group, layout and pasteup. Del. station 74-298, telephone extension 405.

## CHILD CARE

**EXPERIENCED:** my home, Hillsboro, MI 8-2090.

**HIGH SCHOOL GIRLS:** w/experience summer work, prefer Beav. area. Sandy or Becky, MI 4-8308.

**BABY SITTER:** 306 W Garibaldi, Hillsboro, MI 8-3798.

**HIGH SCHOOL GIRL:** summer work, nr. Tek, day shift. Sharon Brown, NE 8-1743.

**ALOHA/HUBER AREA:** high school girl, summer work, references. Roberta, MI 4-7962.

**BABYSITTING:** in our Christian home, 2 yrs. & up. MI 4-7666.

**CHILD CARE:** high school girl, summer work. MI 4-5519.

**HIGH SCHOOL GIRLS:** Nancy—summer work; Carol—fulltime; Beaverton-Hillsboro area pref., gd. refer. MI 8-4564 aft. 4.

## WANTED

**USED LAWN SWING:** gd. shape, max. \$25. MI 8-3787.

**CAMPING EQUIP:** Boy Scout, reasonably priced. MI 4-8049.

**TRANSMISSION:** for '50 Chev., column shift. Ext. 7136 or MI 4-3837 eves.

**BABYSITTER:** for few hours after school, near duplexes on Jenkins rd. MI 6-2280.

**OLDER CAR:** for young boy to work on, cheap. Jack, ext. 7405.

**HAND VACUUM CLEANER:** suitable for upholstered furniture. MI 6-2866 aft. 3:30.

**COFFEE URN:** 40-80 cup, for Aloha Jayces. Harry Wilson, ext. 334 S or MI 4-8116.

**STRAWBERRY PICKERS:** own transp. start about June 7, 21040 SW Baseline rd. Elmer Woods, ext. 7477 or MI 4-5801.

**TRADE HORSES:** for 35 to 50 hp outboard motor. MI 4-5212 aft. 5:30.

**BABYSITTER:** parttime, experienced, for mother on call, my home, nr. Beav. high, 2 children, 7:45 to 4 p.m. MI 4-5075.

**WATER SKIS:** Glen, ext. 452.

**BERRY PICKERS:** own transp., start soon, 21005 W. Baseline, Beav. MI 4-3502.

**USED METRONOME:** either spring wound or elec. Clai, ext. 241 S.

## Hawaiian Tour Slated

According to Marie Frazee (CRT Finishing), tour coordinator, a Hawaiian Holiday tour is scheduled for June 28 to July 7, and is being arranged for Tektronix employees by Van Wyk travel service.

Marie said the date was chosen especially so that employees would be gone during the Fourth of July weekend and would be absent from work only three days. Tourists would go via Pan American jet.

For information or reservations call Marie on extension 7540 or Van Wyk, CA 8-4161.

## Keith Graves Leaves

Keith Graves, Customer Service Order Processing manager, left Tektronix on May 29 to enter private business in the Portland area. He has been with the company since February 1960.

Keith's tenure at Tek has been with the C/S department, first as a staff member and later as Instrument Scheduling manager before his last position.

## MISC. FOR SALE

**MATTRESS/BOX SPRINGS:** steel frame, single bed, red fitted couch cover, \$15. CA 7-2717.

**PLYWOOD BOAT:** 13-ft., gd. cond., windshield, canvas top, \$80. Rueben, ext. 647 or 244-7938.

**CAMPING TENT:** w/bottom, mesh screen dr. & window, 9x9, \$20. Ext. 7464 or CH 6-6671.

**MILK GOATS:** \$2 to \$10. Ray Muhr, ext. 7119.

**RECORD PLAYER:** RCA, 45 rpm, port., \$10. Dick, ext. 627 or 777-2501.

**WEDDING DRESS:** gown w/train & hoop, size 12, orig. \$110, asking \$60. CY 2-4065.

**HIGH CHAIR:** Peterson folding type, chrome, makes into youth chair, gd. cond., \$10. CH 4-9388.

**SHAMPOO/POLISHER:** Hoover elec., new, retails for \$52, \$35. Harry, CY 2-2773.

**'62 GE WASHER:** dryer, deep-freeze, \$325 for all; GE range, \$25; French Prov. bdrm. set, \$200; Gibson refrig., \$75. Juanita, 771-4744.

**HAM GEAR:** Morrow MB560 XMTR, RV250. LV supply & TV600 HV supply, \$90. Don, ext. 442 or MI 6-1765.

**CARTER CAR-PAK:** 45x90, w/zipper bag, comp. encloses luggage, used twice, \$125. OL 4-7543.

**SMOKER:** Little Scout, elec. model, for fish & meat, \$5. Bob, ext. 7225 or ME 9-3951.

**THOR GLADIRON:** \$20; port. typewriter, \$15, cider press, \$25. Herb, ext. 432.

**RADIO EQUIP:** components for amateur radio transmitters, many for high pwr., also ARC-5 unit. 50 cents to \$5. Jim, ext. 7453.

**NIGHTCRAWLERS:** your price, 12840 SW Bowmont, Cedar Hills, MI 4-0577.

**22 REVOLVER:** Colt Frontier Scout, w/holster, nearly new, \$45. MI 4-5459.

**'52 OUTBOARD MOTOR:** gd. 12 hp, gear shift controls, \$55, will trade for smaller motor. MI 6-3388.

**STAUFFER POSTURE TABLE:** like new, \$100. Ext. 7163 or MI 4-6397.

**SIAMESE KITTENS:** \$10 & \$15. OL 6-6880 aft. 6.

**CAMERA:** Speed Graphic, 2 1/4 x 3 1/4, complete, rollfilm adapter, many extras, \$125; tape recorder, Fujiva, 4-in. reel, \$39. Joe Nelson, ext. 7467.

**LADDER:** 24-ft. wood extension, Wards 75A6721F, almost brand new, \$20. Ext. 247 S.

**VIBRATING LOUNGER CHAIR:** nylon & naugahyde cover, brown, \$35. MI 4-4809.

**CROCHETED AFGHAN:** new, wool, autumn shades or your choice, \$25. AV 6-1720.

**14-FT. FIBERGLASS:** Elgin, 30 hp, elec. controls, windshield w/top, trailer, \$700 or reasonable offer. Don, ext. 7460.

**CHICK BROODER:** elec., 4x6, thermostat controlled, \$10; util. trailer, 2 wheel, gd. frame & tires, \$35. Steve, ext. 7606.

**ARIENS ROTOTILLER:** \$200. CH 6-4913.

**CEDAR PLANK BOAT:** 16 1/2-ft., see at 127 E. Grant, Hillsboro. KE 9-8029.

**BED WITH MATTRESS:** & springs, chest of drawers, dble. dresser, walnut finish, all for \$100. Louise, ext. 7601.

**FLOWERS:** fuchias, begonias, geraniums, 25 cents & up. ME 9-4491.

**CHEST OF DRAWERS:** 6-dr., \$10. Bill Cook, ext. 678 or OL 6-8019.

**LEROY PEN SET:** reservoir, 7 sizes, never used, \$15; misc. other drafting supplies. Bob, MI 4-0230.

**WASHER/DRYER COMB:** \$200; 13 cu. ft. Philco refrig., \$100 or make offer; both excel. cond. CY 2-3402.

**GLASS FP DOORS:** 26x36-in., excel. cond., \$35; Coleman floor furnace, 50,000 BTU, gd. cond., \$15. Beverly Holz-nagel, ext. 7697 or MI 4-7598.

## TRADING POST DEADLINE

Tekweek Trading Post is a free service to Tektronix personnel. Mail ads to delivery station 74-298 or call extension 405. Deadline: Fridays at 12 noon. One ad per employee per week. Prices must be included on "for sale" items and rentals.

## MISC. FOR SALE

**LAWN MOWER:** 22-in. rotary & grass bag, used 10 hrs., like new, \$50. Rod, ext. 316 or CH 6-3685.

**STEPPING STONES:** cedar round, 12-in., 35 cents ea.; 20-in., 70 cents ea. MI 4-6321.

**SLIDE CAMERA:** & case, almost new, any reasonable offer. Judy Brown, ext. 7796.

**MAPLE COFFEE TABLE:** \$15. Paul Wright, ext. 367 S or MI 8-6327.

**COWS:** young first calf, fresh, \$150 & up. Barb, ext. 7660.

**AUTOMATIC WASHER:** '54 Kenmore, new pump & belt, very gd. cond., \$45. MI 6-1675 aft. 4.

**6-IN. JOINTER:** trade for 4-in. jointer. MI 4-7861.

**RAMBLER PARTS:** '50, 2-dr., some free, some cheap. Ext. 292 S or CH 4-5392.

**WATER SKIS:** childrens, 1 pr., \$5. JE 8-3514 aft. 5.

**CABIN CRUISER:** 18-ft., \$275. 232-9738.

**DAVENO & CHAIR:** old party rm. furniture, \$5; 275 gal. oil tank & stand, \$30. BU 9-8401 or MI 4-7458.

**REFRIGERATOR:** \$15; DX35, \$25; ISX25, \$40; gas stove, \$15; auto. washer, \$40. Ext. 7375.

**LAWN MOWER:** reel-type, grass catcher included, \$5. MI 4-2959 aft. 2:30.

**ROUND VIRTUE TABLE:** formica top, 2 ext. leaves, 4 brocade chairs to match, walnut color, used 3 mos., \$117.50. Pat, ext. 7236 or MI 4-5027.

**ELECTRIC RANGE:** 30-in., like new, ideal for newlyweds or cabin owners, \$94; refrig., lamps, table, make offer. Chester Stark, MI 4-9578.

**AIR COOLER:** '61 Blizzard, cost \$60, used one summer, excel. cond., \$25. PR 5-6042 aft. 4.

**HAM GEAR:** ARC-5, 4 to 5.3 mc. new; BC-1306, 312 to 6.5 mc. used, excel. cond., make offer. Don, ext. 442 or MI 6-1765.

**POTTED PLANT:** 10-ft plus philander-dron, \$35. Ext. 7176 or MI 6-1356.

**ROTISSERIE GRILLE:** stand, for outside, basket, elec. motor, fam. size, \$10. Cosette Robarts, ext. 672 swing or MI 6-1964 betw. 10 & 3.

**DRAG SAW:** & 5 falling & bucking saws, \$35. Alice Carnley, MI 6-3381.

**CLOSET:** handmade, \$10. Marge Huffman, ext. 672 swing.

**UPRIGHT PIANO:** black gd. cond., \$100. CH 6-3459.

**SWING SET:** w/slide & glider, excel. cond., \$75. MI 4-3746.

## RIDES WANTED

**FROM NEWBERG:** to IO bldg., 8:30-5. Pat Findley, ext. 333 S.

**FROM 144:** nr. Melody Park, days, to Sunset plant. MI 4-1770.

**FROM 81 & GLISAN:** to plant 2, swing Don Stowell, ext. 7796 or AL 2-3011.

**FROM WOODBURN:** 7-3:30 shift, 4 passengers. Shirley, ext. 7441.

**FROM NEWBERG:** to bldg. 47, 7-3:30 shift. Ron Staples, ext. 7398 or JE 8-3529.

## HOUSES FOR SALE

**3-BDRM:** 1500 sq. ft., 1 2/3 bath, fam. rm. w/fp, liv. rm. w/fp, elec. kitch., util. rm., l'scaped, fenced patio, below FHA, \$19,500. MI 6-2571.

**MOBILE HOME:** '59 Rancho, 8x40, 2-bdrm., bath & kitch., oil heat, air cond., \$2500. Milt Thurman, MI 8-6214.

**2-BDRM:** 1 yr. old, secluded Shadowwood area, 15x20 liv. rm., dble. gar., 2 blks. to Tualatin river, \$9850. Ext. 604 or OL 6-7394.

**3-BDRM:** Newberg, neat older home, 90x110 lot, trees, shrubs, garden, gar., shop, \$6700 terms. Loyde Osburn, ext. 7241 or JE 8-3923.

**3-BDRM:** Melody Park, across new jr. high, l'scaped, range, w/w carpet & drapes incl., patio, lge. lot, \$17,020. MI 4-6590.

**3-BDRM:** fam. rm., 2 fp, w/w carpet, drapes, patio, Cedar Hills, \$16,500. Joe B. Springer, MI 6-1632.

**3-BDRM:** 1 2/3 baths, patio, dble. gar., Beav., FHA \$14,200, \$110 mo., \$450 dn. or trade. MI 4-9757.

**3-BDRM:** Benz Park, 2 bath, 3/10 A, din. rm. & bsmt., louvers, drapes, l'scaped, patio, nr. transp., \$22,900. CY 2-4222.

**3-BDRM:** Cedar Hills, lge. fam. rm., fenced back yd., nicely l'scaped, 12x24 patio, \$15,250. MI 4-8951.

**MOBILE HOME:** 10x55, '60 New Moon, deluxe 2-bdrm. carpet, excel. cond., \$4200, can finance. ME 9-1305.

**3-BDRM:** ranch style, fp, hdwd. floors, drapes, irrigation well, entry hall, nr. shops, \$14,500. MI 4-6136.

**2-BDRM:** Aloha, hdwd. floors, gas furnace, lge. birch kitch. w/built-in range, fenced lot, \$10,200. \$1500 dn. Ivy, ext. 208 or MI 8-4525 eves.

**3-BDRM:** Cedar Hills, lge. fam. rm., 1 1/2 baths, 2 fp, patio, dble. gar., must sell by June 30, \$17,500. MI 6-1931.

## LOST

**MALE BORDER COLLIE:** Blackie, total black, 60 lbs., 8 yrs. old, lost about 1 yr., \$100 reward. CH 6-7076.

## RENTALS

**1-BDRM:** apt., stove & refrig., off-st. park, at Murray & Cornell rds., \$59.50. MI 6-1377.

**2-BDRM:** unfurn. apt., new, all-elec., colored appli., carp. & drapes, \$110 & \$115. 420 SE Allen, Beav., CH 6-4957.

**1-BDRM:** part. furn. duplex nr. Tek & GE, \$67.50. MI 4-5852.

**2-BDRM:** house, liv. rm., kitch., shower, closed-in porch, gas furnace, no child., \$75. See: 1450 NW 87th.

**PRIVATE LAKE:** and park: swim, fish, picnic; families, club groups, etc. \$20/day. Marcile Clark, page 7401 days.

**1-BDRM:** apt., birch kitch. w/built-in appli., patio, \$80. MI 8-2761 aft. 4:30.

**2-BDRM:** small house, Forest Grove, elec. heat, suit 2 or 3 persons, \$50. EL 7-3708.

**1-BDRM:** furn. duplex, garage, Cedar Mill, \$65. NE 6-4179.

**2-BDRM:** 3-plex, w/w carp., range, garage, \$115. MI 4-3942.

**2-BDRM:** furn. apt., w/garage, Aloha, \$75. MI 4-3556.

**BACHELOR'S QUARTERS:** completely furn., nr. Sylvan, \$35/mo. CY 2-4591.

**1-BDRM:** ultra-mod. dreamhouse for 2, adults only, avail. July 1, nr. Tek, lease/\$125. MI 4-8611 or MI 4-3332.

**2-BDRM:** small house, nr. Tek, \$75. CY 2-2362.

**1-BDRM:** lge. furn. duplex apts., quiet, attrac. location, adults, Hillsboro, \$80 & \$60. MI 8-5174.

## FREE

**FOUR KITTENS:** cute, some long-haired, some spotted & plain. EL 7-2073.

**KITTENS:** MI 4-0719.

## CARS FOR SALE

**'60 SIMCA:** 2-dr., Aronde, gd. cond., radio, \$525. Ext. 7542 or CH 6-4473.

**'62 IMPALA:** 2-dr. hdt. p., 250 stick, r/h, w/w, 12,000 mi., \$2350. Ext. 395.

**'50 FORD:** \$85. Kathy, MI 4-9357.

**'60 IMPALA:** 2-dr. hdt. p., 335 hp, 3-speed, like new, \$1950. MI 4-1048 eves.

**'60 ALPINE:** od. tonneau cover, \$1550 or trade for equity. Bob Bousquet, ext. 7474.

**'53 HENRY J:** runs gd., \$125. MI 8-2609 aft. 6.

**'60 VESPA:** GS, loaded, low mileage, \$350 or offer. MI 4-1530 aft. 3:30 or wknds.

**'50 OLDS:** club coupe, \$150. Jim, ext. 7480.

**'63 HONDA:** 300 Dream, 1400 mi., take over pmt., \$32/mo. MI 8-1705.

**'62 RAMBLER CLASSIC:** 2-dr., stand. trans., od. r/h, owner leaving—must sell, excel. cond., 8000 mi., \$1795. Ext. 7203 or CY 2-3402.

**'55 OLDS:** 2-dr. hdt. p., hydro., pwr. steer. & brakes, excel. cond., entire car immaculate, \$595. Bill Newman, ext. 7236 aft. 4.

**'54 CHEV:** \$250. MI 4-9718.

**'60 FALCON:** lt. blue, 4-dr. sedan, r/h, auto., exceptionally clean, see West bldg. 19, Tues-Thurs., \$1190. Gordon Dayton, ext. 576 or BE 6-3436.

**JEEP MARINE:** 60 hp, S&N, reverse & reduction gear, \$200. CA 3-1639.

**'60 BSA:** Bantam, 125cc, \$250 or best offer. MO 5-9414.

**'52 CHEV:** 4-dr., deluxe, stick, gd. cond., \$195 or make offer. MI 4-4803.

**'51 FORD:** 4-dr., \$75. 777-5778.

**'56 CHEV:** 4-dr., stick & od, best offer. MI 4-9729.

**'60 AUSTIN-HEALEY:** Sprite, gd. cond., r/h, tachometer, soft top & tonneau cover, \$1050 cash. Faith, ext. 672.

**'46 CHEV:** pickup, 3/4 ton, gd. motor & paint, \$225. Steve, ext. 7606.

**'60 KARMEN GHIA:** convert., excel. cond., \$1750. MI 4-1473.

# Statistics

## BORN:

To Sam and Kathy Bowman (Procurement Coordination), a daughter, Gwendolyn Marie, 7 lbs. 8 oz. May 22.

To Jack and Florence Conner (Material Stores), a daughter, Susan Janess, 6 lbs. 6 1/2 oz., May 18.

To John and Annette Chitwood (Material Stores), a son, John Glen, 7 lbs. 14 3/4 oz., May 20.

To Larry and Darlene Brinkly (C/S Order Processing), a daughter, Julie Ann, 2 lbs. 15 oz., May 14.

To Dale and Mary Jo Derby (GM Assembly, Plant 2), a son, Phillip, 7 lbs. 4 1/2 oz., May 8.

To Arlan and Judy Madsen (MMQA), a son, 7 lbs. 13 oz., May 22.

To Donald F. and Gayle M. Wilson (Ceramics Engineering) a daughter, Cindy Naedean, May 6.

To Ed and Marjory LaBerge (Ceramics Engineering) a daughter, Renne Louise, 6 lbs. 6 oz., May 4.

To Jack and Barbara Benedict (MSE), a daughter, Lisa Ann, 4 lbs. 5 oz., May 15.

To Norm and Verna Malone (Electrochemical), a son, Jay Stewart, 8 lbs. 11 oz., May 14.

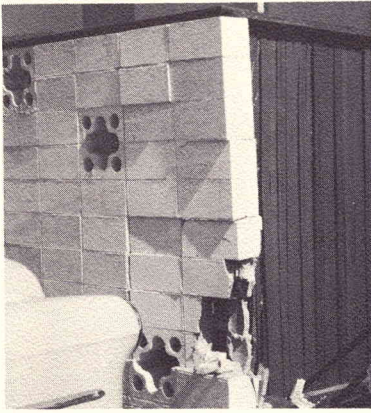
To Dwain and Joanne Hall (Electrochemical), a son, Bradley Dean, 7 lbs. 15 oz., May 9.

## ADOPTED:

By Dick and Pat Terho (MSE), a daughter, Karen Lynn, April 29.

## MARRIED:

Judy Ford (Assembly, Plant 1) and Alden Raney, May 25.



**SECOND STORM** to hit IO building patio wall in last seven months was in the form of Phyllis Jensen (Treasurer's secretary). Phyllis, in her eagerness to get to work one morning, enlarged the parking space somewhat (left) when her brakes failed. Damage was only slight to her car, hardly noticeable to Phyllis, and the wall is getting used to falling down. (Right: October 12 storm damage.)

## Donations Asked For Liberty Bell

A Liberty Bell committee has been appointed by Mayor Terry D. Schruck of Portland to bring an exact facsimile of the original Liberty Bell of Revolutionary fame to Portland by the Fourth of July.

The community-wide program includes donations from individuals, business concerns, civic clubs and patriotic organizations to pay for the bell and ship it to Portland from Baltimore, Maryland, where it is being cast. \$9000 is needed to cover the cost.

If they wish, employees may send donations to Liberty Bell Committee, P.O. Box 1776, Portland 7. Plant Supporting Services manager Tom Williams said he will accept donations from employees until June 19, then forward the lump sum to the committee in the name of Tektronix employees. Send cash or checks to Tom at 74/866.



**PLAQUE** for Al Maxwell (Building Services) read: Presented to Al Maxwell upon retirement from Tektronix, Inc., May 29, 1963, in grateful appreciation for your perfect record of attendance and punctuality throughout eight years of outstanding service and for the happiness and good cheer you un-failingly brought to your fellow employees—Building Services. His wife, Florence, was on hand for the farewell party.

## CAMP FORMS DUE

Registration blanks for the Y M C A - sponsored children's summer camp are due Monday, June 10.

For additional information employees should contact their area receptionists or call the downtown YMCA office.

## Tek-Local Loan Team Takes League Lead

The Local Loan (Tektronix) baseball team took a twin bill from Tillamook last Sunday afternoon and moved into first place in the Tualatin Valley league. Game scores were 6-4 and 5-2.

Dick Place and Dick O'Brien pitched the first game; Darrel Goodwin tossed the second. Power-hitting by Bill Higley and good defensive ball spelled the first win. In the second game at the bottom of the fifth, bases were loaded for Local Loan; with two out, Al Sabel came in to bat for Dale Thomas. After taking two strikes, Al lined a triple to deep right centerfield scoring three runs.

# Job Postings

Tektronix employees should contact Alice Kida, ext. 7620 (8-7620 from Sunset), to apply for positions listed in JOB POSTINGS.

**CLERK-PREPACKAGER:** Men or women to work day shift for the Stockroom of the Customer Service Parts department of US Marketing—two openings (J.P. no. 1869).

**FUNCTIONS:** Package stocked parts, individual or bulk, for identification and protection.  
**QUALIFICATIONS:** Proficiency with numbers; ability to attend to details, to understand brief written instructions; concentration; manual dexterity; versatility.

**TYPIST-CLERK:** Woman to work day shift for the International Material Control group of the Material Management department of Manufacturing (J.P. no. 5903).

**FUNCTIONS:** Type; post; summarize; file.  
**QUALIFICATIONS:** Average typing skill (accuracy more than speed); numbers accuracy; arithmetic ability.

## Teks Leave for Austria with Chorus To Take Part in "Sangerbundefest"

Two Tektronix men are members of the Forest Grove Gleemen, famous singing group from nearby Forest Grove, which is representing the United States at the world-wide choral festival, "Sangerbundefest," in Salzburg, Austria, yesterday through tomorrow.

Bill Beitelspach (ISE) and Don Branda (C/S Parts Publication) left Monday with the group for the European appearance. Bill has been with the Gleemen for three years; Don is a 12-year veteran of the songsters.

"Sangerbundefest" is an international festival held every five years; it brings together the outstanding choral talent from all parts of the globe.

While the group is in Europe, they will give a command performance in Monaco for Prince Ranier and Princess Grace.

Forest Grove Gleemen have been organized for about 18 years. They sponsor the annual Original All-Northwest Barber Shop Ballad Contest held each spring at Forest Grove's Gay Nineties festival.



**ONCE MORE WITH FEELING—**Practicing for their audience and command performance with Princess Grace of Monaco are Bill Beitelspach (left) of ISE and Don Branda of C/S Parts Publication. Building 47 receptionist, Belva Senn, helped the boys brush-up on etiquette.

## Tek Couples Hold Las Vegas Fly-In

Nine Tek couples from Beaverton and four couples from California field offices held a "fly-in" to Las Vegas, Nevada during the weekend of May 24.

They were: Mike and Mary Park (Manufacturing manager), Bill and Virginia Polits (Instrument Design Engineering manager), Dave and Jean Smith (F&M Manufacturing), John and Lee McAllister (Research), Norm and Dolores Winningstad (Instrument Design Engineering), John and Jenny Kobbe (Instrument Engineering staff), Jack and Marge Rogers (Instrument Design Engineering), Bob and Ann Rullman (Instrument Design) and Larry and Dee Bowman (Research). They piloted two Comanches, a Cessna 210 and an Aero Commander.

## Bowlers Organize Winter Matches

A recent survey of Tek bowlers has indicated interest in a three-man league. There was also interest shown in some type of inter-plant league bowling. It is necessary to make preparations now, Bob Pickett (Test, Plant 3), Bowling club vice-president reports.

He needs to know if Tektronix groups or departments are interested in entering a team in a Tek league like the one listed below:

1. Three-man Peterson Point league;
2. Team average: 513,  $\pm 25$ ;
3. Handicap: Scratch unless spread in team averages requires handicapping;
4. Bowl four games per evening;
5. Price: \$2.50 to \$3.00, depending upon prize money;
6. Time: Thursday's early league;
7. Place: Beaverton Bowl.

If men employees are interested or are able to enter a team in such a league, contact Bob at delivery station 47/702 before next Saturday, June 15.

A women's league could be organized on the same basis if there is sufficient interest, Bob said. There are league spots available at Sunset Lanes. If women are interested, contact Kay Bartmess (Capacitors) at delivery station 86/832.

## Rummage Sale Tonight

Tekaqua boat club's annual rummage sale will begin tonight at six o'clock and continue until nine. The location is 327 East Washington street, Hillsboro.

The sale will also be open from 9 a.m. until 6 p.m. tomorrow. All employees are invited to stop by.