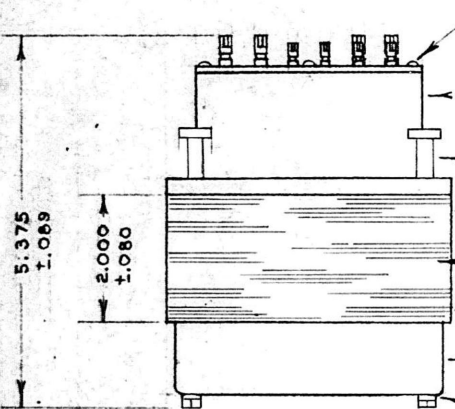
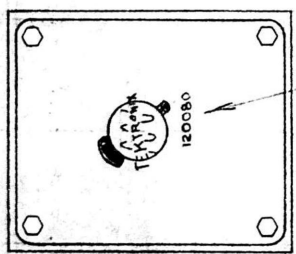


- TEMP NUT
006-146
- LARGE TERMINAL
129-023
- SMALL TERMINAL
129-024
- BOARD
386-991

URNS
WIRE SIZE



- SCREW 4-40 ⁵/₁₆
213-034
- RING - FINISH BLUE
354-028
- BOLT 10-32 X 4
212-545
- LAMINATION
386-006
- BOLT INSULATOR
166-229
- FINISH: BLACK LACQUER
002-607
- COVER - FINISH BLUE
200-043
- WASHER #10 FIBER
210-812



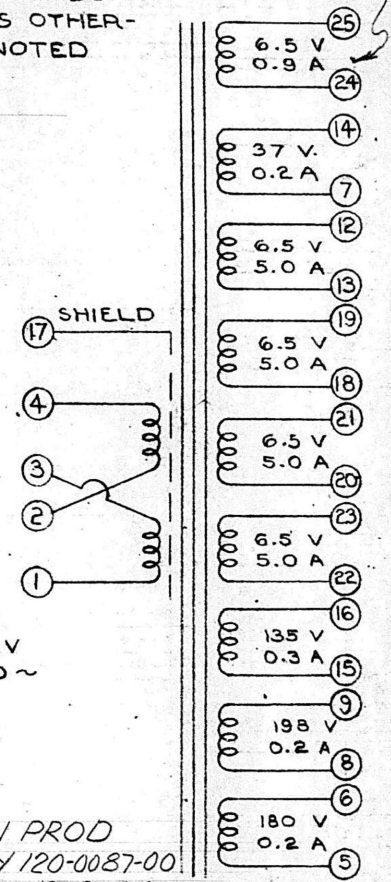
SILK SCREENED

COIL STRUCTURE

TYPE WINDING	TERM. NO.
SECONDARY 7-14 68T #27 176-023	SEC. 24-25 12T #21 176-027
SEC. 18-19 12T 2#19 176-025	SEC. 13-12 12T 2#19 176-025
SEC. 22-23 12T 2#19 176-025	SEC. 20-21 12T 2#19 176-025
SECONDARY 250T #23 176-029	15-16
SECONDARY 365T #25 176-031 B	8-9
SECONDARY 330T #25 176-031 B	5-6
E. S. SHIELD 253-023	17
PRIMARY 204T #21 176-027	2-4
PRIMARY 204T #21 176-027	1-3
INSIDE	

VOLTAGE & CURRENT RATINGS ARE NOMINAL & VARY WITH LOAD & LINE VOLTAGE. ALL WINDINGS ARE INSULATED FOR 600 VDC UNLESS OTHERWISE NOTED

WINDING INS. FOR 1675 VDC



PRIMARY
117-234 V
50-400 ~

© NON PROD
REPL BY 120-0087-00
DH/OK 12-19-66

REVISION	BY	DESCRIPTION OF CHANGE	DATE
B	MN/OK	CUST SVCE	6-5-62
A	SS/OK	Remvd 210-010 washer, 212-545 was RHS	6-4-62

TEKTRONIX, INC. PORTLAND, OREGON, U.S.A.			
TITLE: TRANSFORMER, POWER			
MATERIAL: AS LISTED			
FINISH: AS NOTED			
ENGR: GS	BLANK SIZE:	TYPE: 515 P	
CH. BY: RJC	DR. BY: 6	SCALE:	DATE: 5/31/61
TOLERANCE FRACTIONAL 21/64 ANGLES ± 2° UNLESS OTHERWISE SPECIFIED		PART NO: 120-0080-00	DWG. NO: B-1845