

## Reserve Time, Place For Tek Meetings

Elsie Rohrer, Food Services group manager, has notified the Recreation committee of the rules governing use of the Tektronix cafeteria for meetings of Tek employees.

A representative of the Tek club or employee group should contact the Food Services office (ext. 7429) in advance of the meeting date, to reserve the cafeteria. The reservation should be confirmed in writing by a representative of the employee group.

If the meeting is cancelled or rescheduled, the Food Service office should be notified.

Coffee or tea will be provided for 5 cents per cup, hot chocolate or milk for 10 cents per cup. Advance arrangements should be made for coffee service.

The employee group is responsible for returning tables and chairs to their original position and leaving the area clean.

If there is a conflict in the date or time of meeting place, the Food Service will notify the groups involved as soon as possible and schedule a new meeting place.

## Channel 10 Offers Evening Course For Supervisors

The first session of a new non-credit telecourse, THE BUSINESS OF SUPERVISION, was shown on KOAP-TV at 7:30 p.m., Tuesday.

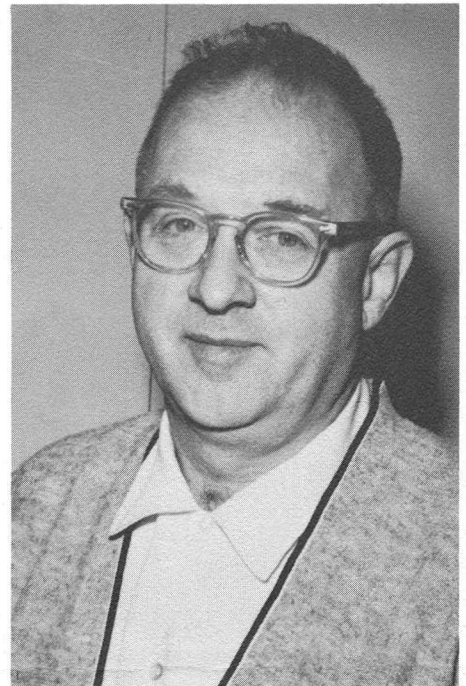
The course may be of interest to Tek supervisors. It continues for nine more weeks, with Dr. Fred Seubert (University of Oregon) as instructor.

A ten dollar (\$10) registration fee includes the cost of text, materials and a viewer's guide. Course fees should be mailed to OFFICE OF TELEVISED INSTRUCTION, 565 Capitol st. N.E., Salem, Oregon.

### FE's Due For Recal

The following Field Office personnel will be in Portland April 9 to 20, for a recalibration session:

Tom Clarke (Cleveland), Terrell Jamison (Chicago), Robin Hoag (Encino), Tony Bryan (Lafayette), Dick Lehman (Philadelphia), Dan Welch (Boston), Gordon Dickson (Montreal) and Bob Siegert (Orlando).



King Handley  
Reports on Trip

## Heerenveen Plant Nears Completion

"Looked very much like home," said King Handley (Materials manager) as he commented about the progress of the Heerenveen, Holland, building site. Almost one week of his three-week tour of Tek's European operations was spent at Heerenveen. The assembly plant under construction there is similar to the Beaverton assembly buildings, but it is being built on a smaller scale. According to King, some operations might be installed in the new plant early this month — before the formal dedication is held.

The primary purpose of King's visit to Europe was to set up and broaden communication channels between production areas and Materials Management functions here and abroad. A forecasting system was initiated for the semi-finished parts shipping operation, as a result of a review of that program. They (Tek in Europe) express the continuous need for certain semi-finished parts and we (in Beaverton) will supply them.

Two of the several long-range plans that were discussed while King was overseas are (1) the possibilities of air shipment, which would enable us to operate more closely with and in accordance to each other's production schedules. There is now an eight-week delay — shipping by boat; (2) setting up an interchange of ideas and data that come from Tek's purchasing and vending units or similar areas of contact. It would provide several areas with valuable information.

# Tekweek

Vol. 3, No. 1 Tektronix, Inc., Beaverton, Oregon April 6, 1962

## Eligible Voters May Register At Tek For May 18 Primary Election

Residents of Multnomah and Washington counties may register to vote at Tektronix April 9-17, according to Tom Williams, Plant Supporting Services manager. Tom and Joanne Edstrom, PSS secretary, are certified by the Registrar of Voters for this purpose.

All eligible voters, who have registered in the past but who did not vote in the primary or general elections in 1960, must re-register.

Applicants for first registration must be at least 21 years old by May 18 and must have lived six months in Oregon prior to registration. Naturalized citizens must present citizenship papers before they can complete voter registration.

Here is the voting registration schedule:

Date	Location	Hours
April 9	Bldg. 45 lunchroom	11 a.m. - 12:30 p.m.
April 10	Bldg. 45 lunchroom	11 a.m. - 12:30 p.m.
April 11	Bldg. 86 conference room	11 a.m. - 12:30 p.m.
April 12	Bldg. 45 lunchroom	11 a.m. - 12:30 p.m.
April 13	Bldg. 19 lunchroom	11 a.m. - 12:30 p.m.
April 16	Bldg. 46 lunchroom	11 a.m. - 12:30 p.m.
April 17	Bldg. 74 conference room	11 a.m. - 1 p.m.

Voters may register at the Plant Supporting Services office outside of the hours listed above.

Employees who reside in other counties are encouraged to register in those counties prior to April 17, which is the deadline for voters intending to vote in the May 18 primary.

## Roger Tippett Named Honor Roller

Roger Tippett (Test, Plant 2) bowled a 212, 203, 171 —586 series during Tek Men's bowling league play Thursday, March 29, and earned the title of Honor Roller.

Ken Lukens (IMSE) rolled Hi Individual game with his 245 score. A "staircase series" was bowled by Carl Oberst (Ceramics) who tallied 132, 133, 134.

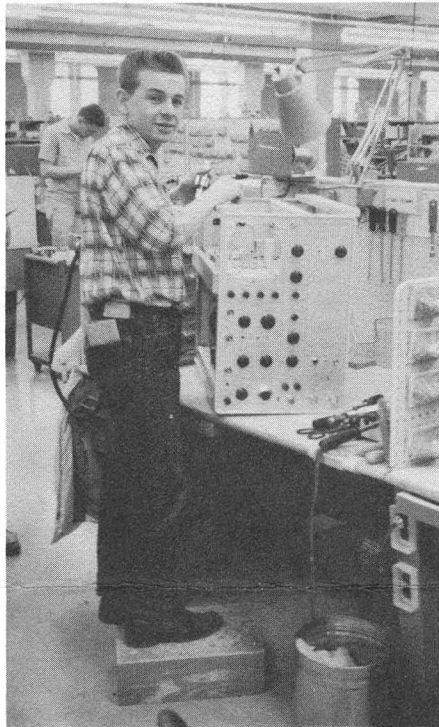
## Gun Club Loses First Shoot

The Tek Gun club lost its first competitive shoot Wednesday, March 21, at Sunset high school. The teams used .22 rifles. The Sunset high school team defeated Tek.

Members of the Tek team were Ed Ackerman (Test, Plant 2), Ron Clark (Test, Plant 1), Glenn Ross (Eng. Purch.) and Jim Buxton (IMQA).

The Sunset rifle range is open to all employees every Saturday from 9 to 12 a.m. A range officer is in charge.

The next Tek Gun club meeting is scheduled for April 11 at 4 p.m. in the Ceramics building cafeteria. All members are urged to attend to discuss a tentative offer of land for an outdoor shotgun range.



**MAKING SHORT WORK** of Tek's largest instrument, the Type 519, is Plant 2's shortest final assemblyman, Tom Noe. "Just because they're big doesn't mean you have to be big to build them!" says Tom.

## To the Editor:

To: Tekweek Editor

At the March 13th group representative meeting, Bill Webber explained the problems that annexation would cause for Tektronix. According to the minutes the representatives asked, "What can we do to help?"

This is one of the clearest examples I've seen recently of the unique spirit of Tek employees. At a time when we're raising critical questions about our own internal affairs, we also see the intense loyalty that unifies us against external threats to our long-range welfare.

Situations like this generate the kind of pride that enables us to criticize ourselves without destroying our self-respect.

Irv D. Smith,  
Employment manager

To: Tekweek Editor

Successful spaceflight Glenn impressive achievement of American electronic industry. We shared in your moment of triumph via radio and TV. Congratulations.

The Rood family,  
(Tektronix' Dutch distributors)

## Handbook Section Out of Print

The "About Your Retirement Trust" section of the employee handbook is out of print and, because several changes in Retirement Trust policy are being considered, the present section will not be reprinted.

When the new section, incorporating the changes, is completed it will be mailed to all employees. Employees who need information from the Retirement Trust section of their handbooks may borrow another employee's copy or may contact the Communications department.

---

## GOLF BANQUET REMINDER

All employees are cordially invited to enjoy themselves at the sixth annual Tek Golf club dinner-dance tomorrow evening at seven o'clock in the Terrace Room at University of Portland. The program includes a guest speaker, door prizes and dancing until midnight. Tickets (\$3 per person) will be on sale at the door.

---



"LOOK OUT, KIDS!

THE SUNDAY GOLFERS FROM TEK ARE BACK!"

## Ten-Year Teks

## Tax Advice



**DURING MARCH** the following employees celebrated their ten-year anniversaries at Tektronix and received service awards: (top, l. to r.) Henry D. Scott and Robert G. White; (bottom) Floyd Stewart.

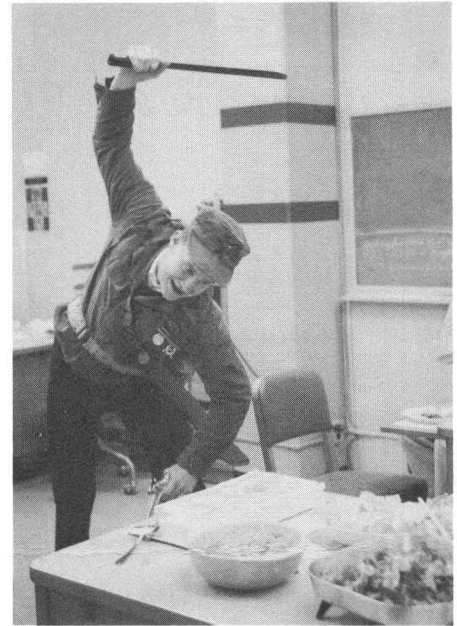
Federal income taxpayers who are faced at tax time with large additional payments to satisfy their indebtedness to Uncle Sam have a way out in future years, A. G. Erickson, district director of the Internal Revenue Service for the State of Oregon, points out.

Additional sums may be added to taxes withheld by the employer in cases of this kind, Mr. Erickson said.

"There are various ways of doing this," he added. "If a taxpayer finds himself owing an additional hundred dollars or more of tax at the year's end, he should reduce his exemption or dependency claims by one. This will automatically increase his tax payments over the year by \$120 or more and may even result in a small refund.

"Taxpayers who find themselves owing lesser sums can, in most instances, arrange with their paymasters or disbursing offices to increase their withholding two or three dollars per pay period or whatever approximate sum may be required to even out the tax owed.

"In any event," Mr. Erickson said, "consulting the payroll office will probably enable the taxpayer to work out a withholding plan most suitable to his situation."



**MIKE MCGAHAN** (Instrument Mfg. Scheduling & Materials) prepares to "cut" the cake presented to him at a farewell potluck in his honor, prior to his departure for a service term. He was presented with suitable items of equipment and was decorated for merit by Bud Wall.

## Group Representative Areas Changed; Switch Effective April 10

The group representative panel (composed of Hap Flynn, coordinating chairman; Myrna Nebert, Don Hendrickson and Becky Short, area chairmen; and Paul McCracken, Newt Moody and Ron Stempel, alternate area chairmen) has reorganized the three group representative areas so they will be of equal size.

Beginning with the April 10 area meetings, the areas will be divided this way:

**Area I**, which includes the present Millikan Way area and representatives from Sunset plant, will meet from 9-10:30 a.m. The meetings will be held on alternate months in the I.O. building conference room number 1 (bldg. 74) and the Future Products Engineering conference room in the Sunset plant (bldg. 86). April meetings of Area I will be in the I.O. building. Becky Short and Myrna Nebert will alternate as co-chairmen for Area I.

**Area II** includes assembly buildings (bldgs. 39 & 47), Electron Devices (bldg. 46) and the Cafeteria (bldg. 45). Area II meetings will be held in the Plant 2 assembly conference room, 12-1:30 p.m. Paul McCracken and Newt Moody will alternate as co-chairmen for the balance of their terms, at which time a new chairman and alternate will be elected.

**Area III** includes Ceramics (bldg. 13), Metals (bldg. 19) and Facilities (bldg. 28). Area III meetings will be held in the Plant 2 assembly conference room, 2-3:30 p.m. Don Hendrickson is chairman. A new alternate area chairman will be elected.

Group representatives who work on swing or graveyard shifts may come to the meeting for their areas, or may attend the 2-3:30 p.m. meeting. If any questions arise concerning the divisions of the areas, contact the area chairmen or Hap Flynn.

## NEXT WEEK'S Tekweek

Watch for annual  
bowling tournament  
information.

---

According to Oregon law, pedestrians lawfully crossing a street at an intersection, or at a regular crosswalk, have the right of way. Between intersections the right of way belongs to the cars. The Portland Traffic Safety commission points out that the pedestrian who jaywalks steals the right of way from a car, just as surely as the driver who barges through an occupied crosswalk takes it away from the people on foot. Afoot or in a car, the important thing to remember about your own right of way is: it's something to give up, never to take away.

---

## PLASTICS PROCESSING PAUL'S PLASTIC PILLS

**Pat Schaumburg** is back at work after sick leave.

**Jerry Baldwin** celebrated her sixth year at Tek by treating us to doughnuts.

## ASSEMBLY, PLANT 2 FARAH'S WHEELS

**Carmen Lewis** is out of work due to fire damage in her home.

**Elroy Farah's** baby is in the hospital for an operation.

## CRT SMALL PARTS PREP ADAM'S EYES

**Bobby Dillenburger**, son of **Helen**, won a trip to the World's Fair.

**Virginia Stuart** is grandmother of a baby girl.

## UNIT WIRING, PLANT 1 LOWELL COOK'S GROUP

**Margot Davis** is new in our group from swing shift.

**Di Hart**, **Thanua LaVoie**, **Marian Phillips**, **Sharon Powell**, **Betty Thomas**, **Joan Clark** and **Echo Larson** are back in our group from Pilot Production.

**Dorothy Etzwiller** is back with us after recent surgery.

# departmental news

## ASSEMBLY, PLANT 3 FRED'S FRAULEINS

**Betty Denny** made another flying trip to Los Angeles last weekend to judge a cat show.

**Marlene Peterson** treated the group to cookies last Friday in appreciation for the wedding shower in her honor.

**Bob McKeown** from Seattle-Pacific university and **Kermit Williams** from Oregon State university, who worked with us last summer, visited us during spring vacation.

## UNIT WIRING, PLANT 1 GEORGE RICKMAN'S GROUP

Last Tuesday **George Rickman** treated the group to cookies, celebrating his first anniversary as supervisor.

**Betty Fillingier** is on loan to Pilot Production.

**Joyce Braukman**, who transferred to swing shift, sent us a box of candy.

## ASSEMBLY, PLANT 2, SWING THE SOLDERETTES

**Joyce Weber** and **Dulcie Long** joined our group from day shift Training.

**Martha Epler** transferred to **Elroy Farah's** group on day shift.

## ASSEMBLY, PLANT 2 BILL'S SHORTIES

**Cleo Binkerd** celebrated her sixth anniversary, and **Norma Sheets** her first anniversary, by treating the group.

**Joyce Williams** was promoted to first lieutenant in the Civil Air Patrol.

**Don Hayden**, **Rudy Freiskorn** and **John DeCamp** transferred to Finals.

**Dorothy Muhly's** son, **Curtis**, arrived home recently after two years in Japan.

Back in the group after being on loan to other departments are **Dorothy Reeves**, **Irma Hansen**, **Cleo Binkerd**, **Nona Clayborne**, **Maxine McCabe**, **Melva Cline** and **Kathy Wegter**.

## BUILDING SERVICES

On March 28 **Aaron Watson** celebrated his birthday by treating us to ice cream and cookies.

**John A. Bradford** is new in the group.

## BUILDING SERVICE SUNSET SWINGERS

**Jack Vandehy** is home recovering from an ulcer operation.

**Dick Heiser** treated us to cake on his birthday.

## ASSEMBLY, PLANT 2 DALE DERBY'S DAYDREAMERS

After coming through skiing lessons safe and sound, **Robbie Taylor** sprained her ankle last Sunday.

## CAPACITORS

**Laura Johnson**, swing shift, returned to work this week after recovering from an auto accident.

**Dorothy Freerksen's** husband, **Karl**, who is in Building Services, is back at work after surgery.

Newcomers to the department this week are **Barbara Williams** and **Marianne Stoop** in the pot group, and **Geneva Green** and **Homer Harnett** in the capacitor group.

New officers for our group are **Grace Malone**, group representative; **Esther Miner**, alternate; and **Ann Bender**, social chairman.

**Kay Bartmess** treated the group to homemade candy, celebrating her eleventh anniversary at Tek.

**Ted Blatt** is the new supervisor in capacitors.

## SUPPORT GROUP, PLANT 2

Mechanical celebrated **Bud Ramsdell's** birthday March 22 with cake at the afternoon coffee break.

Cables also had cake celebrating birthdays of **Bud Ramsdell** and **Bud Rasmussen**.

**Edla Borgen** is on loan to Kit Prep from Unit Wiring.

Kit Prep celebrated the birthdays of **Penny Baby** and **Roberta Wilson** with cake.

Cables department girls surprised **Kay Eager** with a stork shower March 28.

**Melba Cline** and **Kathy Wegter**, from the Short Line, have been helping in Mechanical, and **Helen McIntosh** has been helping in Pilot Production.

**Ozella Canada**, **Lou Turner**, and **Mary Ann Dewey** transferred from Mechanical to Plant 2, Planning.

## ACCESSORIES, SWING

**Dorothy McCool** from day shift has been with us for the past week.

We had cake March 29 honoring **Bob Culver**, who is getting married.

## BUILDING SERVICES

**George Pettry** served cake celebrating the birth of his son.

**John Snook** served ice cream the same night to celebrate his first anniversary at Tek.

## SUPPORT GROUP, PLANT 2, SWING

Cake and ice cream were served at a birthday shower for **Sally Denner Plaisted**.

We also had cake honoring **Dora Jensen's** birthday.

## ASSEMBLY, PLANT 3 MARSHALL'S DEPUTIES

**Glenda Giberson** and **Chis Long** celebrated their first anniversaries at Tek by treating the group.

**Shirley Korsmyer** is our new social representative. **Shirley Allen** is her assistant.

We had pie and ice cream honoring **Dee McGee**, **Jean Wilson**, **Maylene Cuddington**, **Sandy Siltanen** and **Olivia Lavine**, who are transferring to other departments.

## ASSEMBLY, PLANT 3 GIPSON'S GIRLS

We had cookies to send off **Carol Anderson**, who transferred to swing shift.

**Opal Bowles**, **Clara Stroup**, **Hilda Compton** and **Millie Millsop** transferred to **John Johnson's** new group.

Cake was served last Wednesday at a surprise baby shower for **Mary Dove**.

## ASSEMBLY, PLANT 2 JAMES' GANG

We had a smorg for **Lorna Walton**, who is taking a leave of absence.

**Elsie Niemeyer**, **Bette O'Bannon** and **Majel Bundel** supplied snacks at a birthday party for our utility man, **Jerry Branch**.

## UNIT WIRING, PLANT 1 STAN SAETY'S GROUP

**Charnell Hoak** treated the group to candy on her first anniversary at Tek.

**Eilene Petterson** and **Gerry Trafton** have transferred into our group from swing shift.

**Margaret Peck** has a new grandson. **Harriet Davis** transferred to swing shift.

## FINALS, PLANT 1

### FABLES FROM FINALS

**Bill Mills** and **Denny McCoy** are new in our group.

On loan from cabinetizing are: **Doug Dwight** and **Julius De Joode**; from Test: **Sam Hutchinson**, **Rose Skinner**, **Olive Marshall**, **Lloyd Gilbertson**, **Bill Ford** and **Harold Abel**.

**Evelyn Johnson** is back in Finals.

## PLANT 1, KIT PREP & MECHANICAL

**Eleanor Schneider** from Plant 1 Unit Wiring provided a cake for last Friday's birthday party for **Ella Woolhiser** and **Perline Keller**.

**Ella Woolhiser** treated the group to cookies celebrating her first anniversary at Tek.

## CRT GUN ASSEMBLY

We had a farewell luncheon at the Showboat for **Leona Costa**, who is taking a leave of absence from **Art Abma's** group.

**Lois Thompson**, **Scoop Ingalls'** group, is grandmother of a baby girl.

## UNIT WIRING, PLANT 2 DOUG'S LADIES

We all enjoyed a baby shower for **Bev Anderson** March 22.

**Wanda Carter** is back at work after a three-month leave of absence.

I wish to extend my sincere appreciation to the Custom & Militarized Instruments group for the flowers and to all other Tek employees for their expressions of sympathy upon the death of my father.

**E. T. Pickrell**,  
Custom & Militarized  
Instruments

I would like to thank all my friends at Tek for all the flowers and cards I received while in the hospital.

**Harry Bachofner**,  
Facilities Construction

## Tekweek

TEKWEK is published every Friday for Tektronix employees by the Communications department in cooperation with the Graphics Arts group, the Printing department and the Photography department. Send all copy to Tekweek, delivery station 74-298. Call extension 401 to place Trading Post ads. Copy deadlines: ads and departmental news, Friday morning; general news, Monday morning. **Carol Day**, editor; **Becky Short**, co-editor; extension 405.

## SERVICES AVAILABLE

**APPLIANCE REPAIR:** washers, dryers, ranges; reasonable. ME 9-3020.

**CHILD CARE:** your home, swing shift. Mrs. Hall, MI 4-0747.

**ALTERATIONS, DRESSMAKING:** expert fitting, your home, satisfaction guaranteed, pickup & delivery service. Mrs. Verpoorten, ME 9-4678.

**IRONING:** my home, \$1 per hour, deliver to 2965 S.W. 120th any time. MI 4-9392.

**BABY SITTING:** days, near Tektronix. MI 6-1630.

**CHILD CARE:** my home. MI 4-0632.

**FOREIGN CARS REPAIRED:** all makes, proper work at right price, experienced mechanic. Ron Tindall, BE 2-3854.

**PAINTING, PAPERHANGING:** weekends, attractive rates. Walt Hansen, CH 4-7369.

## CARS FOR SALE

'57 **DODGE SUPER STOCK:** D-501, 340 hp, factory beefed-up throughout, 29,000 mi., \$1295. Don, CY 2-5640 eves.

'55 **FORD PICKUP:** ¾-ton, \$525. ME 9-3727.

'50 **FORD PICKUP:** ½-ton, 6 cyl., good cond., \$350. Don Turk, EL 7-6533.

'59 **ENGLISH FORD:** free equity, payments \$49.20; total price \$639.60. Ivy, ext. 208 or MI 8-5026 eves.

'49 **OLDSMOBILE 76:** 2-dr., runs good, good tires, motor, \$75. CY 2-5351.

'49 **DODGE:** 4-dr., good transportation, \$110. Bob, ext. 7341 or ME 9-3951.

'57 **DODGE:** 4-dr. hdt., pwr. brakes, 39,000 mi., \$745. Corinne, ext. 322 Sunset or MI 8-2485 aft. 5 p.m.

'55 **OLDSMOBILE:** 4-dr., auto. trans., dk. gray, real sharp, \$695. EL 7-6257 days.

'46 **STUDEBAKER PICKUP:** w/'54 V-8 motor, good body, \$100. EA 4-2274 eves.

'61 **FORD FAIRLANE:** 6 cyl., 4-dr., will take older car in trade or \$300 for equity. MI 4-7171.

'60 **VOLKSWAGEN:** blue, 20,000 mi., excel. cond., \$1350. BE 5-2417 aft. 5 p.m.

'55 **CHEVROLET:** 6 cyl., stick, 2-dr. sedan, \$600. John Macy, ext. 7612 or MI 6-1830.

'60 **CHEVROLET IMPALA:** hdt., \$1995. ME 9-4736.

'61 **CHEVROLET MONZA:** coupe, 98 hp, 4-speed, fully equipped, w/bluel interior, 11,500 mi., \$2095. Darlene Wruble, MI 4-0023.

'61 **RENAULT:** r/h, w/w tires, 3900 mi.; 8000 mi. or 7-month guarantee left; best offer over \$1100. 771-0205.

'55 **CHEV CONVERTIBLE:** Bel Air, auto. trans.; lowered pipes, etc. \$950. ME 9-4736.

'29 **A ROADSTER:** '52 Olds. engine, custom chassis, semi-finished. Must sell, make offer. 875 S.E. 13th, Hillsboro.

'46 **CHEVROLET PICKUP:** \$150. Jack Holmes, ext. 7405.

'49 **NASH:** 2-dr., excel. cond., good 2nd car, \$125. MI 8-2643.

'53 **STUDEBAKER:** 2-dr., good paint, stick & OD, w/w tires, heater, runs good, \$350. Ruth, ext. 319 Sunset.

'55 **CHEVROLET CONVERTIBLE:** Bel Air, auto. trans., \$850. CY 2-5954.

'51 **PONTIAC:** 2 extra tires, r/h, \$85 or make offer. Alvin Whitehouse, ext. 7291 or EL 7-2923.

'51 **PONTIAC:** club coupe, r/h, hydromatic trans., good cond. Best offer over \$150. Dick, ext. 602 or MI 4-0359.

## MISC. FOR SALE

**BEDROOM SET:** boy's, maple-look finish; incl. dresser, bed & nite stands, \$30. MI 6-1770.

**INFANT'S CAR BED:** \$5. MI 8-2981.

**CAMPER:** fits ½-ton pickup, sleeps 3, \$275. June, ext. 7796 aft. 4 p.m.

**DESK & CHAIR:** like new, modern styling. \$60. CH 6-4918.

**HAIR DRYER:** portable, \$10. MI 4-0970 days.

**14-FT. SKI BOAT:** 40 hp Merc. motor, Tee Me trailer, \$725. Bud, ext. 630 or MI 4-1090.

**CHAIN SAW:** Home Lite, 24-in. bar, model 7-193, 7 hp, excel. cond., \$200 or trade. Emily, ext. 7376.

**WASHING MACHINE:** Montgomery Ward, wringer-type w/pump, \$25. CY 2-2876.

**HOLSTEIN HEIFER:** due to freshen any day, \$200. MI 4-1237.

**ROTOILLER:** 26-in. ME, 10 hp, excel. cond., \$275 or best offer. BE 2-5415.

**ORCHARD SPRAYER:** 50-gal. tank sprayer w/½ hp gas engine; on rubber tires, \$50. MI 4-7146.

trading  
post

## WANTED

**USED LAWN SWING:** Arleta, ext. 265 Sunset.

**SNOW TIRES:** two 6.50 x 16, 6 ply, commercial grade; and two 6.50 x 16 hwy. tred, 6 ply. Dick Taylor, ext. 241.

**WINCHESTER 257:** Model 70, in good shape. CH 6-5764.

**TABLE SAW:** 8 x 10 in., tilting arbor, good cond. Wayne Fetters, ext. 7331.

**ROOMMATE:** woman. MI 6-2828 days.

**SKI BOOTS:** men's, size 11-12; women's, size 8-9. John Bowner, ext. 292 Sunset or CY 2-5651.

## RIDES WANTED

**FROM VIC. LAKE ROAD & OATFIELD:** to Sunset plant, 7-3:30 shift. Bertha, ext. 418 or 659-1942.

**FROM 5914 N.E. DAVIS:** or alternate driver, to Bldg. 74, 8-4:30 shift. Margaret, ext. 614 or BE 5-7923.

## FOUND

**ROSAEY:** w/black beads, in Metals cafeteria. Ext. 7601.

**GM KEY:** in parking lot on west side of Metals bldg. Ext. 7201.

## MISC. FOR SALE

**12-FT. CARTOP BOAT:** aluminum, with carrier, almost new, \$125. Harry King, ext. 7111.

**14-FT. ISHAM RUNABOUT:** 5½ hp Johnson, steering & controls, trailer, winch, spare; \$450 w/motor, \$375 w/o. Arlin James, ext. 351 or MI 4-7240.

**BEDROOM SET:** \$55; kitchen set \$30; refrigerator \$15; misc. ware, reasonable. ME 9-1813.

**SPIN-DRY WASHER:** \$15. CA 7-3730.

**THOR IRONER:** \$20 or trade. Duane, ext. 576 or OL 6-5524.

**SPINET REED ORGAN:** Wurlitzer, model 4410, walnut, excel. tone & cond. Cost \$1515, sell for \$850. MI 6-1846.

**RHODODENDRON:** budded, named, \$250 each. 13730 S.W. Butner rd. MI 4-6374.

**REMINGTON SHOTGUN:** 12 gauge, pump, like new, \$65 Chuck, ext. 7320.

**THOR "WASH & DRY":** Lawn Boy power mower \$15; oil heater \$15; 4-wheel trailer \$10. MI 4-2226 Sat. only.

**GAS RANGE:** used, \$50. Terry Shaner, ext. 7795.

**CLASS A HYDROPLANE:** w/controls, 15 hp Mercury motor 1000 lbs. capacity. Wards trailer, \$225. Blaine, ext. 7149 or MI 4-9783.

**TWO 26-INCH BIKES:** girl's w/basket \$20; boy's Schwinn w/paper carrier saddle baskets \$30. Don Allen, ext. 317 or MI 4-8936 aft. 5 p.m.

**SSB HAM GEAR:** Heath Kit Apache \$225; Heath Kit SB-10 \$80; Hammuriland HQ-170 w/spkr. \$295; Bob Wruble, ext. 3444 or MI 4-0023 aft. 5 p.m.

**HEATHKIT SP 2A STEREO PREAMP:** like new \$45; pair of new pink ceramic table lamps \$15. Louis Mahn, ext. 7269.

**18-FT. CABIN BOAT:** and trailer w/35 hp elec. motor, \$1125. 520 S.W. Main st., Beav.

'57 **BRYANT OUTBOARD CRUISER:** with two 35 hp Evinrude elec. motors, excel. cond. Must sell, best price. Al Davies, ext. 694 or MI 4-4929.

**FIREPLACE WOOD:** fir & hardwood, by the cord or partial cord. CH 4-1421 or JE 8-4019.

**GYM SET:** 2 swings, glider & slide, \$5; add'l 6-ft. slide, \$5. MI 4-7408.

**14-FT. BIRCHCRAFT:** folding top plus drape; steering & controls; trailer w/winch; spare wheel; \$300. OL 4-3656.

**REMINGTON MODEL 721:** 300 mag., 4X scope, tipover mounts, sling; shells; sell or trade, \$125 cash. CY 2-2031.

**MATTRESS & BOX SPRINGS:** dble. size matt.; springs w/frame \$20; twin-sized iron bed w/innerspring matt. \$20. Marilyn Woods, ext. 7652 or MI 4-5801.

**12-FT. RUNABOUT:** Batten Strip, steering & all hardware, \$125. Be 4-6037.

**POWER LAWNMOWER:** Espa 21-in., 4 cycle, 2½ hp, rotary; used less than 1 yr., \$35. MI 4-8069.

**UPRIGHT PIANO:** good cond., \$75. Helen Hefgard, AL 4-3916.

**ADMIRAL TV:** 19-in., thin, used 4 mos., '61 model w/stand, \$125. Donna Richardson, ext. 7404.

**TWIN BEDS:** w/bookcase headboards, box springs & mattresses, 5-drawer chest; \$32.50. AV 6-0554.

**SEWING MACHINE:** Singer elec. console cabinet, heavy-duty head, \$55. MI 8-4843.

**14-FT. CORLISS RUNABOUT:** convert. top, curtain, fiberglass, mahog. deck steering, controls, custom-tilt trailer, \$650. Bob Verpoorten, ME 9-4678.

**GIRL'S DRESSES:** sizes 1-5, 75 cents to \$1.25. CH 6-4191.

**BROADLOOM RUG:** 11 x 12, all wool, with pad, brown tweed, \$119. Dick Falk, ext. 7626.

## ACREAGE

**NEAR NEWBERG:** view acreage, stream, wooded canyon, native shrubs, forest strip, on paved road, 5½ acres. Make offer, Loyde Osburn, ext. 7241.

## RENTALS

**1-BDRM:** apt., range & ref., washer & dryer, \$75. MI 4-7242 aft. 3:30.

**2-BDRM:** house in Beav., fp, range, gar., near schools, trans., shopping. \$85. MI 6-1797.

**2-BDRM:** duplex, newly renovated, \$50 incl. water & elec. heat, on arterial hwy. Mrs. Geo. Pirich, MI 8-2398 aft. 4 p.m.

**1-BDRM:** West Slope, unfurnished, garage; heat, water & garb. paid, \$80. CY 2-5980.

**2-BDRM:** unfurnished duplex, garage, elec. heat, range; \$62 adults, \$65 w/1 child, no pets. MI 4-1507.

**2-BDRMs:** duplex, 900 sq. ft., washer, dryer, range & ref., elec. heat & fp, 3 blks. to bus, \$100. MI 8-2715.

**1-BDRM:** apt. in Beav., all util. paid except elec., \$65. Dave, ext. 300 Sunset or MI 4-5075.

**LEASE:** secluded, country estate, bridle paths, barn, 3 bdrms., party rm. \$250. MI 4-1448.

## HOUSES FOR SALE

**3-BDRM:** panelled liv. & din. rms., 60 x 143 fenced yd., utility, on paved deadend st., \$12,200—\$400 down. MI 4-7847.

**3-BDRM:** contemporary beamed ceilings, fam. rm., fenced patio area, Cedar Hills, \$14,900. MI 4-7888.

**2-BDRM:** on 8 acres, elec. heat, 4 acres timber, 3 acres berries, 5 mi. west of Banks. \$4500—\$1000 down. EL 7-9048.

**3-BDRM:** nr. Tek, 2½ yrs. old, sep. din. & util. rms., dbl. garage, fenced, patio, \$15,050 Mrs. Heller, MI 4-7391.

**3-BDRM:** fp, fenced yd., roomy; low down pmt., will consider older house or camping trailer as part of down, \$15,200. MI 4-6079.

**3-BDRM:** compact, w/daylt. bsmt., fenced yd., in Vermont Hills, \$15,500. CH 6-4512.

**3-BDRM:** 2 blks. to Tek, 2 baths, assume 4% % GL. Krambuhl, MI 4-3670.

**3-BDRM:** mahog. panelled liv. rm., fp. bsmt., oil heat, trees, gar., Overlook area, \$11,450. AT 7-2918.

**2-BDRM:** elec. heat, patio, trees, rose hedge, shrubs, flowers; well, 110 x 112 lot, in Beav., \$11,000. Ext. 7456 or MI 4-4187 aft. 5 p.m.

**3-BDRM:** comb. liv. & din. rms., att. gar., covered patio, fenced yd., \$10,500 MI 4-4989.

**2-BDRM:** in Vernonia, redecorated, new roof, \$3500. Ext. 505 or EL 7-6370.

**3-BDRM:** 1 2/3 baths, fam. rm., fenced yd., birch kitch., possible trade for comparable East side property. \$14,900. MI 4-7326.

**3-BDRM:** walk to work in 5 min., below FHA, \$16,500. CA 2-5993.

**3-BDRM:** fp, util. rm., attached gar., children's playhouse, dishwasher, \$13,950. CY 2-6150 or CH 4-1968 eves.

**3-BDRM:** for sale or rent, near Tek, fp, \$11,000; rent for \$95. MI 4-1541.

**3-BDRM:** 2 baths, fp, dble. gar., 85 x 120 landscaped yard, in Beav., \$15,900. Ralph Show, ext. 7356.

**3-BDRM:** liv. & din. area combined, large fp, patio, \$13,700. MI 4-3894.

**2-BDRM:** on lge. lot, 13725 N.W. Park place, fp, oversized kitch., hdwd. floors, newly redec., \$9950. MI 4-8624.



# JOB POSTINGS



Tek employees applying for positions published in JOB POSTINGS:

**CONTACT**  
**Alice Kida**  
**ext. 7620**  
**and refer to J.P. no.**

**WOMAN: export clerk, day shift (J. P. No. 4007)** for the International Marketing department of Corporate Marketing with the Overseas Support group.  
**DUTIES:** acknowledge and process incoming export orders; type documents necessary for overseas shipments; answer inquiries from customers and representatives in overseas countries.  
**QUALIFICATIONS:** accuracy, neatness, appreciation for details, originality and ability to work well with others.

**WOMAN: clerk-typist, day shift (J. P. No. 1823)** for the Customer Service department of Domestic Marketing with the Parts Research group.  
**DUTIES:** type correspondence, parts lists and miscellaneous data; file part number forms and history information; answer telephone.  
**QUALIFICATIONS:** better than average typist; must be accurate with numbers and able to follow directions; compatible and able to endure some monotony.

**WOMAN: clerk-typist, day shift (J. P. No. 1067)** for the Quality Coordinator's group of the Accessories department of Instrument Manufacturing.  
**DUTIES:** type, file and keep records.  
**QUALIFICATIONS:** good physical condition; ability to get along well with others.

## STATISTICS

### BORN:

- To Bob and Darlene Wruble (Factory Inst. Repair, A/C), a son, Michael Patrick, 8 lbs. 14 oz., March 17.**
- To George and Lois Petry (Building Services), a son, Marvin Roger, 8 lbs. ½ oz., March 20.**
- To Edwin and Darla Dixon (Plant 1, Unit Wiring), a son, Danny Ray, 9 lbs. 1 oz., March 25.**
- To Albert and Evelyn Stanley (Plant 3, Assembly), a daughter, Kathy Jeanene, 6 lbs. 9 oz., March 10.**
- To Vernon and Marian Van Domelen (Office Services), a daughter, Carolyn Kay, 6 lbs. 14½ oz., March 26.**
- To Norman and JoAnn Whitlow (Transformers), a daughter, Patricia Lee, 6 lbs. 9 oz., March 17.**
- To Earl and Lois Reynolds (Plant 1, Plug-in Test), a daughter, Grace Irene, 9 lbs., 15 oz., March 21.**
- To Mr. and Mrs. Frank Consalvo (Data Systems), a daughter, Debra Sue, 5 lbs. 12 oz., March 23.**
- To Mr. and Mrs. Jim Schneider (Data Systems), a son, Rex Raymond, 7 lbs. 8 oz., March 15.**

### MARRIED:

- Mary Legler (Unit Wiring, Plant 2) and Don Mercer (Inst. Eng. Model Shop), March 23.**
- Jewell Umbrecht (Assembly, Plant 1) and Henry Liebelt, February 17.**
- Bob Culver (Accessories, swing) and Pauline Buddicombe, March 31.**
- Carl Kaye (Stock) and Paula Flisher, March 24.**

**The Domestic Operations needs a director of Domestic Planning (J. P. No. 63).**

### FUNCTION:

To assist the general manager in assessing the future business of domestic operations and to assist him in determining what needs to be done to promote and meet this business. To compare actual product output and shipments according to the product with projected output and shipments, and to explain variations. To research the network of formal data flow that ties independent work leaders with others in interdependent work, and to recommend the flow and sequence of clerical operations required to connect the work effort of people or groups reporting to different work leaders.

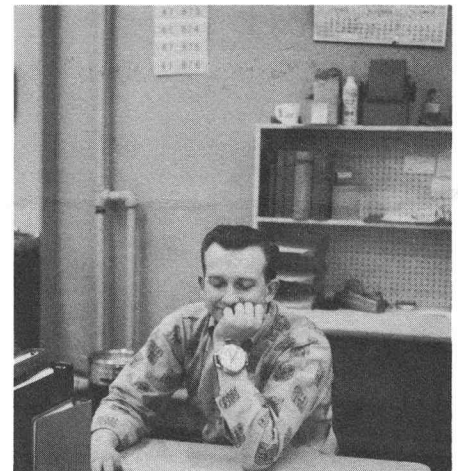
To provide the general manager reports by which he may know the status of actual business compared to projections.

To research and report on economy of our markets and to correlate our business patterns with those of the industry and with other published economic indicators.

### QUALIFICATIONS:

The qualifications of candidates for this position will be measured against the following requirements:

- (1) Good knowledge of general business operations and how the planning function fits in.
- (2) Good understanding of general manufacturing processes, flow of materials, sales, inventory control and costing so as to be able to relate the planning function to these areas.
- (3) A strong interest in broad aspects of planning and sufficient knowledge of methods and techniques of planning so as to be able to build, motivate and supervise a planning organization.
- (4) The ability to set objectives and establish measures and controls within the planning function.
- (5) The ability to relate effectively to operating managers and others in dealing with problems, requests and in achieving mutually required results.
- (6) Thorough knowledge about and experience with various research techniques required in the planning function.
- (7) Knowledge about and preferably experience with systems work and machine statistical methods.
- (8) Skill to act rapidly and accurately in getting required info, converting it into usable reports and/or recommendations and making effective presentations.
- (9) Sufficient pertinent experience that he can recommend improvement and/or make innovations in the planning function.



**WRIST WATCH WITH BUILT-IN ALARM** was given to Jerry Maxwell who left the Plant 3, Planning group to become a group manager in Plant 3 Assembly. In his usual alert manner, Jerry posed for the photographer.

Apr. 14 8pm