

TECHNICAL MANUAL

**ORGANIZATIONAL, DIRECT SUPPORT AND GENERAL SUPPORT
MAINTENANCE**

REPAIR PARTS AND SPECIAL TOOLS LIST

**(INCLUDING DEPOT MAINTENANCE REPAIR PARTS
AND SPECIAL TOOLS LIST)**

FOR

SPECTRUM ANALYZER

AN/USM-489(V)1

(NSN 6625-01-079-9495)

This publication is required for official use or for administrative or operational purposes only. Distribution is limited to US Government Agencies. Other requests for this document must be referred to Commander, US Army Communications-Electronics Command and Fort Monmouth, ATTN: AMSEL-ME-P, Fort Monmouth, NJ 07703-5000.

HEADQUARTERS, DEPARTMENT OF THE ARMY

15 OCTOBER 1986

**ORGANIZATIONAL, DIRECT SUPPORT AND GENERAL SUPPORT MAINTENANCE
REPAIR PARTS AND SPECIAL TOOLS LIST
(INCLUDING DEPOT MAINTENANCE REPAIR PARTS
AND SPECIAL TOOLS LIST)**

FOR

SPECTRUM ANALYZER

AN/USM-489(V)1

(NSN 6625-01-079-9495)

Current as of 4 June 1986

REPORTING ERRORS AND RECOMMENDING IMPROVEMENTS

You can help improve this Manual. If you find any errors or if you know of a way to improve the procedures, please let us know. Mail your letter or DA Form 2028 (Recommended Changes to Publications and Blank Forms) direct to: Commander, U.S. Army Aviation and Missile Command, ATTN: AMSAM-MMC-LS-P, Redstone Arsenal, AL 35898-5230. A reply will be furnished to you. You may also send in your comments electronically to our e-mail address: ls-lp@redstone.army.mil or FAX us at (205) 842-6546/DSN 788-6546.

Table of Contents

		Page	Illus Figure
Section	I. Introduction	1	
	II. Repair Parts List	15	
Group	00 Spectrum Analyzer, AN/USM-489(V)1	15	1
	01 Front Panel Assembly	21	2

*This manual supersedes TM 11-6625-3136-24P, 8 November 1985.

Table of Contents - continued

		Page	Illus Figure
	02 Rear Panel Assembly		
	0201 Main Power Supply, A30	25	3
		104	
Section	III Special Tools List	29	
Group	99 Special Tools	29	4
Section	IV National Stock Number and Part Number Index	31	

SECTION I INTRODUCTION

1. Scope

This manual lists and authorizes spares and repair parts; special tools; special test, measurement, and diagnostic equipment (TMDE); and other special support equipment required for performance of organizational, direct support, and general support maintenance of the AN/USM-489(V)1. It authorizes the requisitioning, issue, and disposition of spares, repair parts and special tools as indicated by the source, maintenance and recoverability (SMR) codes.

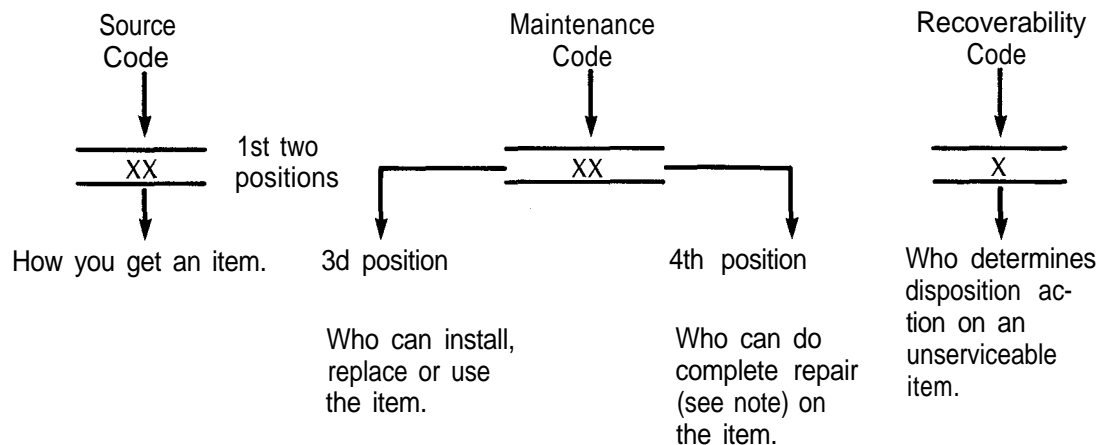
2. General

This Repair Parts and Special Tools List is divided into the following sections:

- a. *Section II. Repair Parts List.* A list of spares and repair parts authorized by this RPSTL for use in the performance of maintenance. The list also includes parts which must be removed for replacement of the authorized parts. Parts lists are composed of functional groups in ascending numeric sequence, with the parts in each group listed in ascending item number sequence. Figure numbers are listed directly beneath the group header.
- b. *Section III. Special Tools List.* A list of special tools, special TMDE, and other special support equipment authorized by this RPSTL (as indicated by Basis of Issue (BOI) information in (column 5)) for the performance of maintenance.
- c. *Section IV. National Stock Number and Part Number Index.* A list, in National item identification number (NIIN) sequence, of all National stock numbered items appearing in the listing, followed by a list in alphameric sequence of all part numbers appearing in the listings. National stock numbers and part numbers are cross-referenced to each illustration figure and item number appearance.

3. Explanation of Columns (Section II and III)

- a. *Item No. (Column (1)).* Indicates the number used to identify items called out in the illustration.
- b. *SMR Code (Column (2)).* The source, maintenance, and recoverability (SMR) code is a five-position code containing supply/requisitioning information, maintenance category authorization criteria, and disposition instruction, as shown in the following breakout:



NOTE

Complete repair: Maintenance capacity, capability, and authority to perform all corrective maintenance tasks of the "Repair" function in a use/user environment in order to restore serviceability to a failed item.

(1) *Source code.* The source code tells you how to get an item needed for maintenance, repair, or overhaul of an end item/equipment. Explanations of source codes follows:

Code

Explanation

PA
PB
PC
PD
PE
PF
PG

Stocked items; use the applicable NSN to request/requisition items with these source codes. They are authorized to the category indicated by the code entered in the third position of the SMR code.

NOTE

Items coded PC are subject to deterioration.

KD
KF
KB

Items with these codes are not to be requested/requisitioned individually. They are part of a kit which is authorized to the maintenance category indicated in the third position of the SMR code. The complete kit must be requisitioned and applied.

MO—Made at org/
AVUM category
MF —Made at DS/
AVUM category
MH—Made at GS
category
ML —Made at
Specialized
Repair Activity
(SRA)
MD—Made at Depot

Items with these codes are not to be requested/requisitioned individually. They must be made from bulk material which is identified by the part number in the description and usable on code (UOC) column and listed in the Bulk Material group of the repair parts list. If the item is authorized to you by the third position code of the SMR code, but the source code indicates it is made at a higher category, order the item from the higher category of maintenance.

AO —Assembled by
org/AVUM
category
AF —Assembled by
DS/AVIM
category
AH —Assembled by
GS category
AL —Assembled by
SRA
AD —Assembled by
Depot

Items with these codes are not to be requested/requisitioned individually. The parts that make up the assembled item must be requisitioned or fabricated and assembled at the category of maintenance indicated by the source code. If the third position code of the SMR code authorizes you to replace the item, but the source code indicates the item is assembled at a higher category, order the item from the higher category of maintenance.

- XA —Do not requisition an “XA” coded item. Order its next higher assembly.
- XB —If an “XB” item is not available from salvage, order it using the FSCM and part number given.
- XC —Installation drawing, diagram, instruction sheet, field service drawing, that is identified by manufacturers part number.
- XD —Item is not stocked. Order an “XD” coded item through normal supply channels using the FSCM and part number given, if no NSN is available.

NOTE

Cannibalization or controlled exchange, when authorized, may be used as a source of supply for items with the above source codes, except for those source coded “XA” or those aircraft support items restricted by requirements of AR 750-1.

(2) *Maintenance code.* Maintenance codes tell you the category of maintenance authorized to USE and REPAIR support items. The maintenance codes are entered in the third and fourth positions of the SMR code as follows:

(a) The maintenance code entered in the third position tells you the lowest maintenance category authorized to remove, replace, and use an item. The maintenance code entered in the third position will indicate authorization to one of the following categories of maintenance.

<i>Code</i>	<i>Application/Explanation</i>
C	Crew or operator maintenance done within organizational or aviation maintenance.
O	Organizational or aviation unit category can remove, replace, and use the item.
F	Direct support or aviation intermediate category can remove, replace, and use the item.
H	General support category can remove, replace, and use the item.
L	Specialized repair activity can remove, replace, and use the item.
D	Depot category can remove, replace, and use the item.

(b) The maintenance code entered in the fourth position tells whether or not the item is to be repaired and identifies the lowest maintenance category with the capability to do complete repair (i.e., perform all authorized repair functions). This position will contain one of the following maintenance codes.

NOTE

Some limited repair may be done on the item at a lower category of maintenance, if authorized by the Maintenance Allocation Chart (MAC) and SMR codes.

<i>Code</i>	<i>Application/Explanation</i>
O	Organizational or aviation unit is the lowest category that can do complete repair of the item.
F	Direct support or aviation intermediate is the lowest category that can do complete repair of the item.
H	General support is the lowest category that can do complete repair of the item.
L	Specialized repair activity (designate the specialized repair activity) is the lowest category that can do complete repair of the item.
D	Depot is the lowest category that can do complete repair of the item.
Z	Nonreparable. No repair is authorized.
B	No repair is authorized. (No parts or special tools are authorized for the maintenance of a "B" coded item). However, the item may be reconditioned by adjusting, lubricating, etc., at the user category.

(3) *Recoverability code.* Recoverability codes are assigned to items to indicate the disposition action on unserviceable items. The recoverability code is entered in the fifth position of the SMR Code as follows:

<i>Recoverability codes</i>	<i>Application/Explanation</i>
Z	Nonreparable Item. When unserviceable, condemn and dispose of the item at the category of maintenance shown in the third position of SMR Code.
O	Reparable item. When uneconomically repairable, condemn and dispose of the item at organizational or aviation unit category.
F	Reparable item. When uneconomically repairable, condemn and dispose of the item at direct support or aviation intermediate category.
H	Reparable item. When uneconomically repairable, condemn and dispose of the item at general support category.
D	Reparable item. When beyond lower category repair capability, return to depot. Condemnation and disposal of item not authorized below depot category.
L	Reparable item. Condemnation and disposal not authorized below specialized repair activity (SRA).
A	Item requires special handling or condemnation procedures because of specific reasons (e.g., precious metal content, high dollar value, critical material, or hazardous material). Refer to appropriate manuals/directives for specific instructions.

c. *FSCM (Column (3)).* The Federal Supply Code for Manufacturer (FSCM) is a 5-digit numeric code which is used to identify the manufacturer, distributor, or Government agency, etc., that supplies the item.

d. *Part Number (Column (4))*. Indicates the primary number used by the manufacturer (individual, company, firm, corporation, or Government activity), which controls the design and characteristics of the item by means of its engineering drawings, specifications, standards, and inspection requirements to identify an item or range of items.

NOTE

When you use a NSN to requisition an item, the item you receive may have a different part number from the part ordered.

e. *Description and Usable on Code (UOC) (Column (5))*. This column includes the following information.

(1) The Federal item name and, when required, a minimum description to identify the item.

(2) In the Special tools section, the basis of issue (BOI) appears as the last line in the entry for each special tool, special TMDE, and other special support equipment. When density of equipments supported exceeds density spread indicated in the basis of issue, the total authorization is increased proportionately.

(3) The statement "END OF FIGURE" appears just below the last item description in Column (5) for a given figure in both section II and section III.

f. *Qty (Column (6))*. Indicates the quantity of the item used in the breakout shown on the illustration figure, which is prepared for a functional group, subfunctional group, or an assembly. A "V" appearing in this column in lieu of a quantity indicates that the quantity is variable and the quantity may vary from application to application.

4. Explanation of Columns (Section IV)

a. *National Stock Number (NSN) Index*.

(1) *Stock number column*. This column lists the NSN by National item identification number (NIIN) sequence. The NIIN consists of the last nine digits of the NSN. When using this column to locate an item, ignore the first four digits of the NSN. When requisitioning items use the complete NSN (13 digits).

(2) *Fig. column*. This column lists the number of the figure where the item is identified/located. The illustrations are in numerical sequence in sections II and III.

(3) *Item column*. The item number identifies the item associated with the figure listed in the adjacent Fig. column. This item is also identified by the NSN listed on the same line.

b. *Part Number Index*. Part numbers in this index are listed by part number in ascending alphanumeric sequence.

(1) *FSCM column*. This column lists the Federal supply code for manufacturer (FSCM).

(2) *Part number column*. This column indicates the part number assigned to the item.

(3) *Stock number column*. This column lists the National stock number for the associated part number and manufacturer identified in the part number and FSCM columns to the left.

(4) *Fig. column*. This column lists the number of the figure where the item is identified/located in sections II and III.

(5) *Item column*. The item number is that number assigned to the item as it appears in the figure referenced in the adjacent figure number column.

5. Special Information

a. *Associated Publications*. The publication listed below pertains to the AN/USM-489(V)I and its components:

TM 11-6625-3136-12, Spectrum Analyzer AN/USM-489(V)I

TM 11-6625-3136-40, Spectrum Analyzer AN/USM-489(V)I

b. *National Stock Numbers*. National stock numbers (NSN's) that are missing from P source coded items have been applied for and will be added to this TM by future change/revision when they are entered in the Army Master Data File (AMDF). Until the NSN's are established and published, submit exception requisitions to: Commander, US Army Communications–Electronics Command and Fort Monmouth, ATTN: AMSEL-MM, Fort Monmouth, NJ 07703-5000 for the part required to support your equipment.

6. How to Locate Repair Parts

a. When National stock number or part number is not known.

(1) *First*. Using the table of contents, determine the assembly group or subassembly group to which the item belongs. This is necessary since figures are prepared for assembly groups and subassembly groups, and listings are divided into the same groups.

(2) *Second*. Find the figure covering the assembly group or subassembly group to which the item belongs.

(3) *Third*. Identify the item on the figure and note the item number.

(4) *Fourth*. Refer to the Repair Parts List for the figure to find the part number for the item number noted on the figure.

(5) *Fifth*. Refer to the Part Number Index to find the NSN, if assigned.

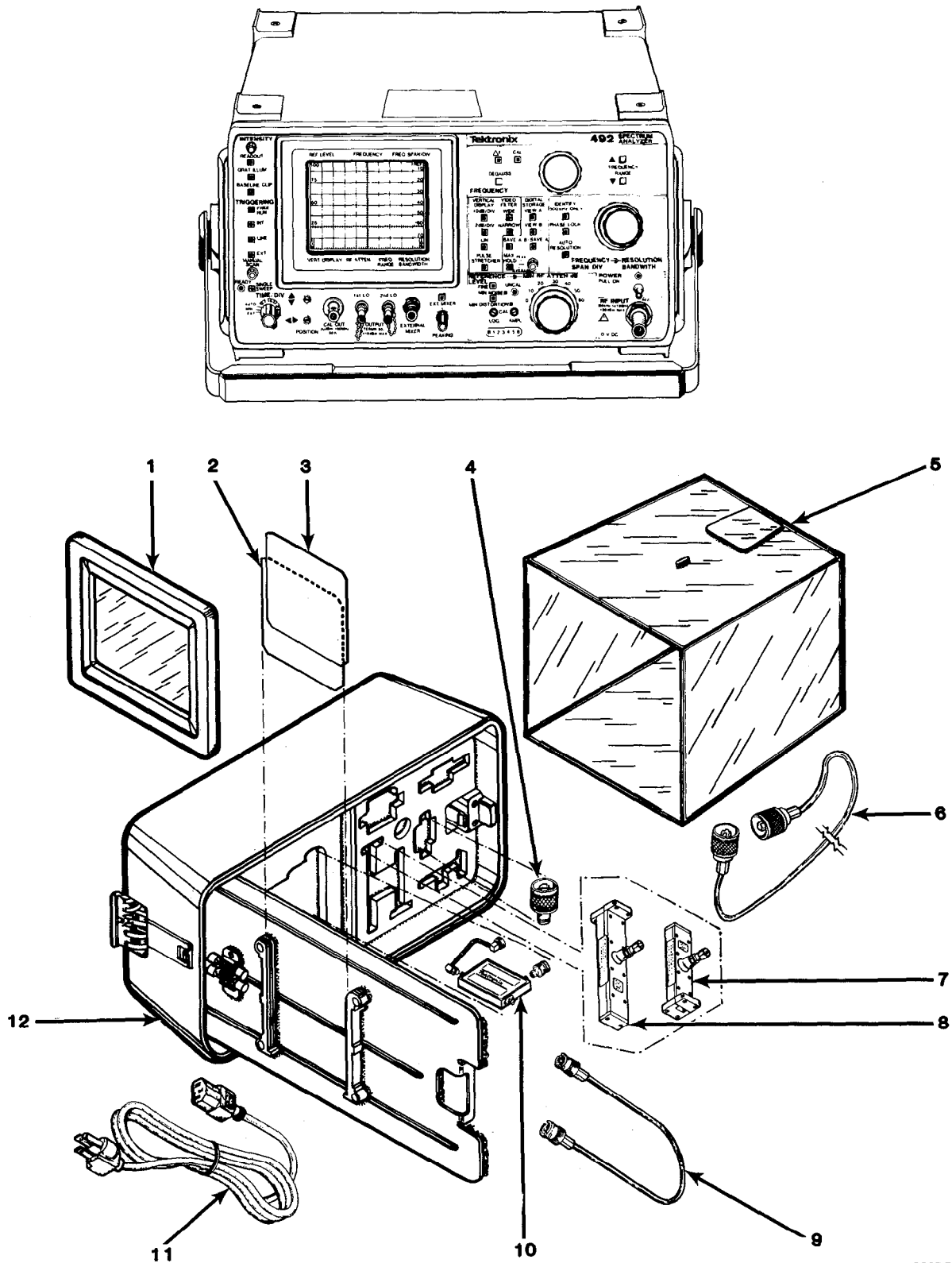
b. When National stock number or part number is known.

(1) *First.* Using the index of National stock numbers and part numbers, find the pertinent National stock number or part number. The NSN index is in National item identification number (NIIN) sequence (para 4a(l)). The part numbers in the part number index are listed in ascending alphameric sequence (para 4b). Both indexes cross-reference you to the illustration figure and item number of the item you are looking for.

(2) *Second.* After finding the figure and item number, verify that the item is the one you're looking for, then locate the item number in the repair parts list for the figure.

7. Abbreviations

Not applicable.



EL9WM001

Figure 1. Spectrum Analyzer AN/USM-489(V)1 (Sheet 1 of 8)

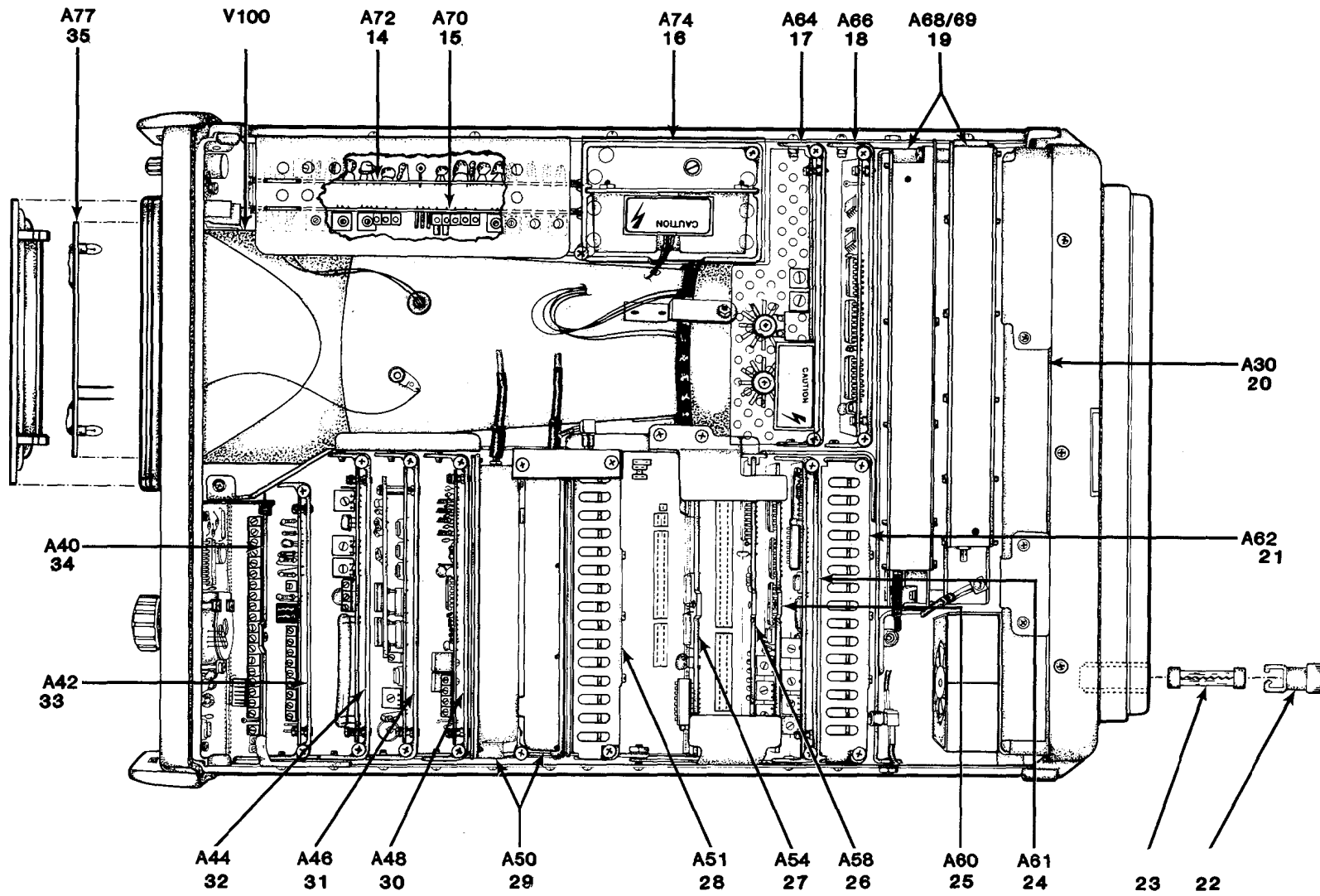


Figure 1. Spectrum Analyzer AN/USM-489(V)1 (Sheet 2 of 8)

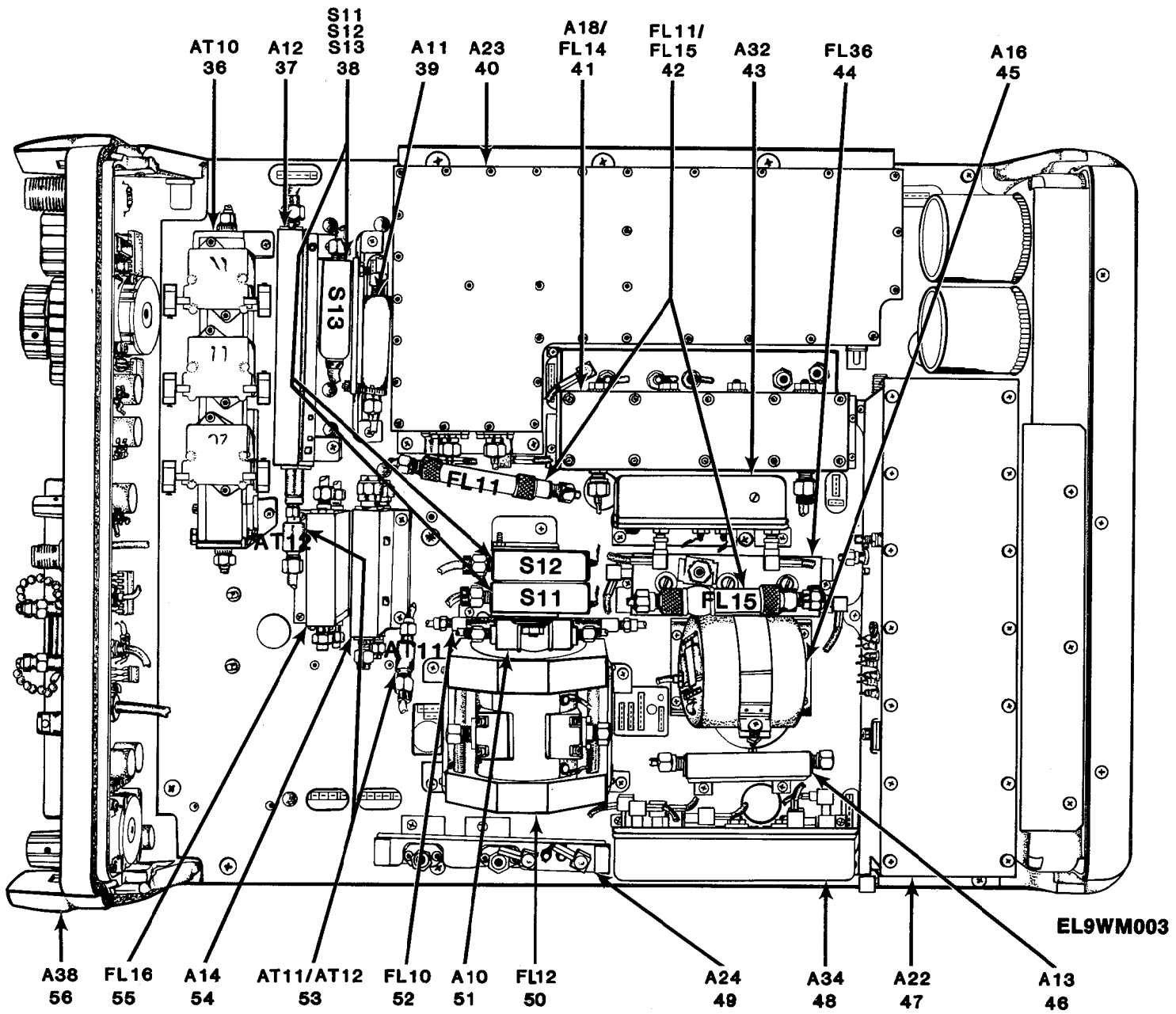
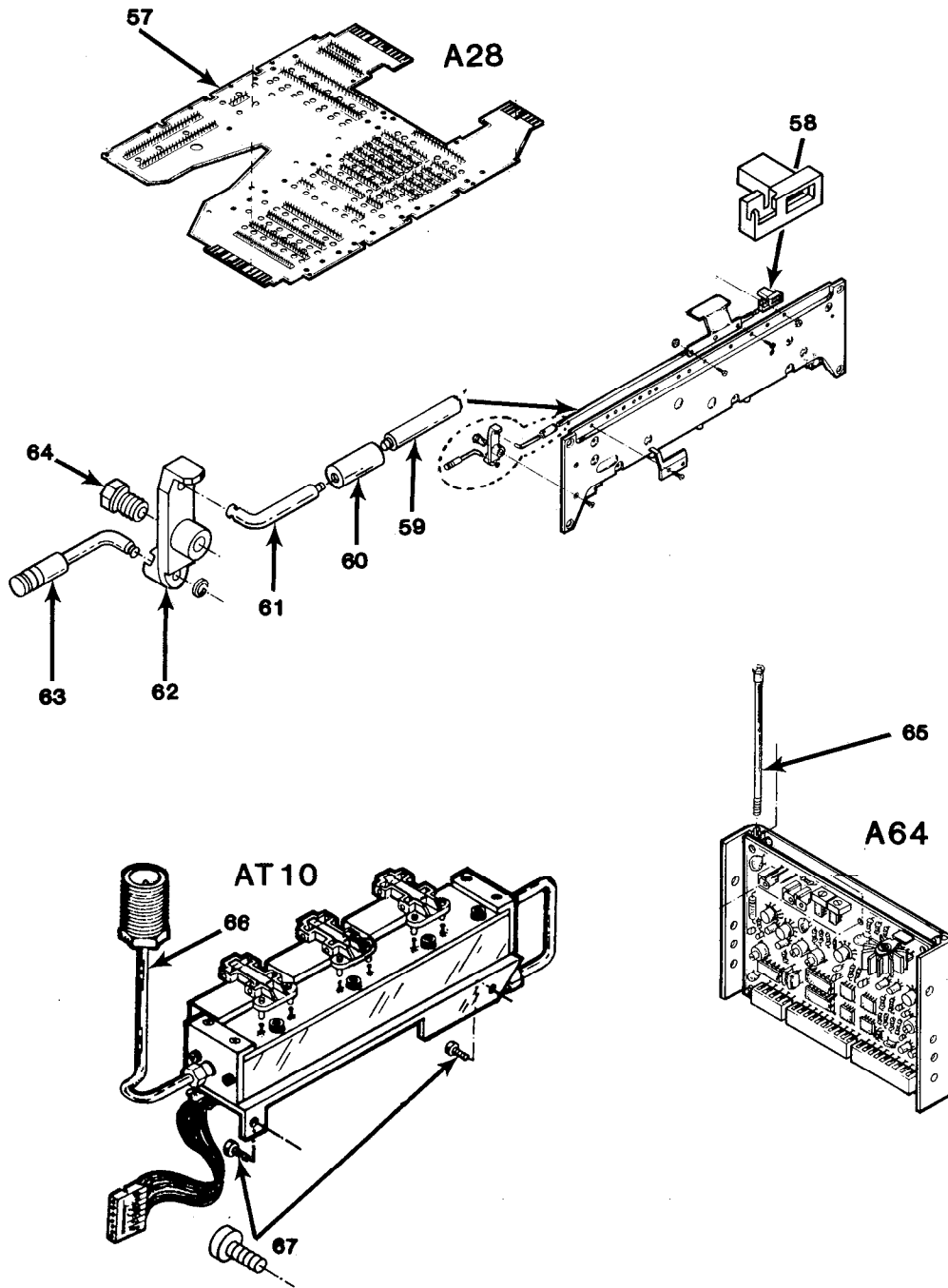
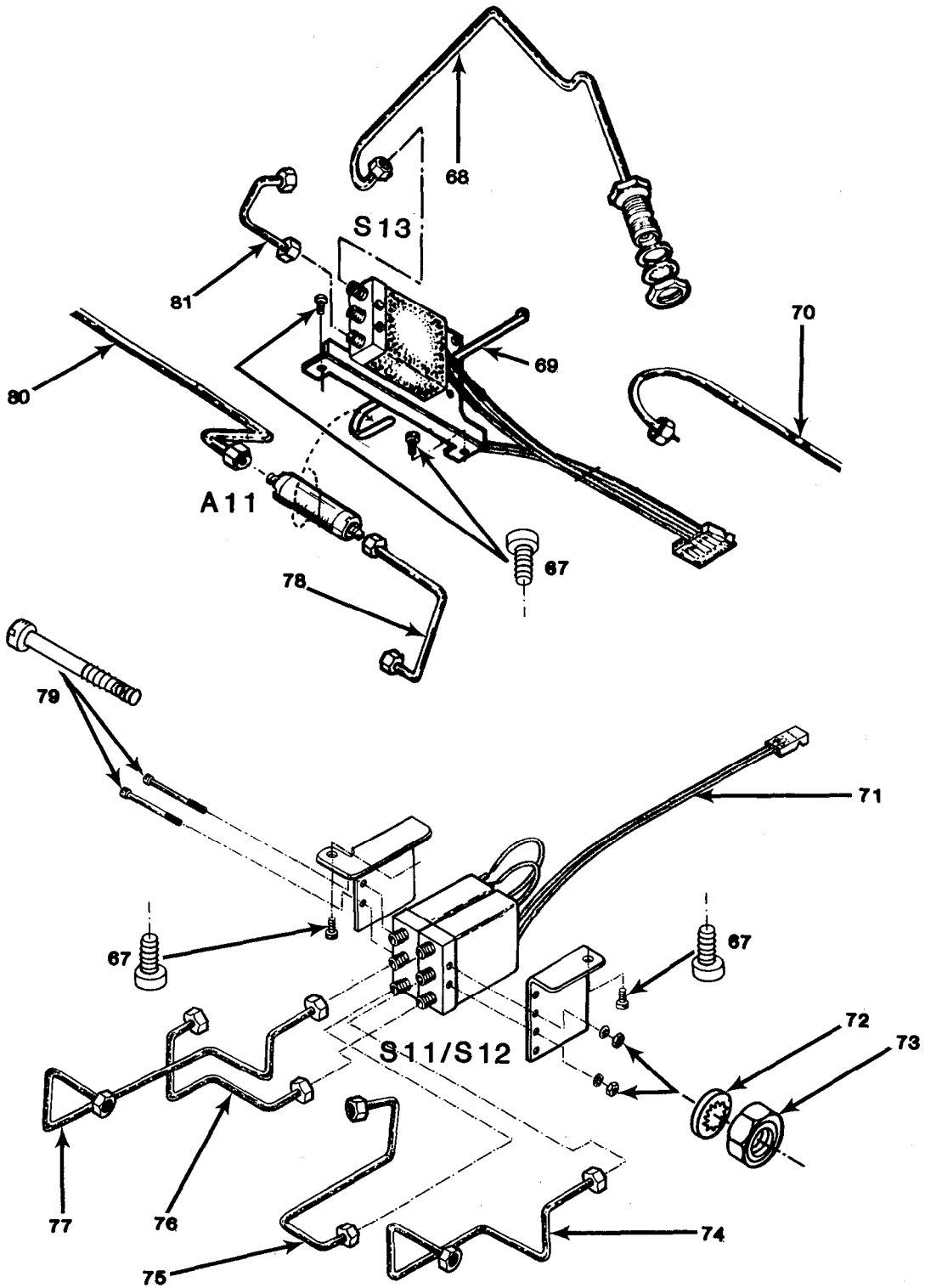


Figure 1. Spectrum Analyzer AN/USM-489(V)1 (Sheet 3 of 8)



EL9WM004

Figure 1. Spectrum Analyzer AN/USM-489(V)1 (Sheet 4 of 8)



EL9WM005

Figure 1. Spectrum Analyzer AN/USM-489(V)1 (Sheet 5 of 8)

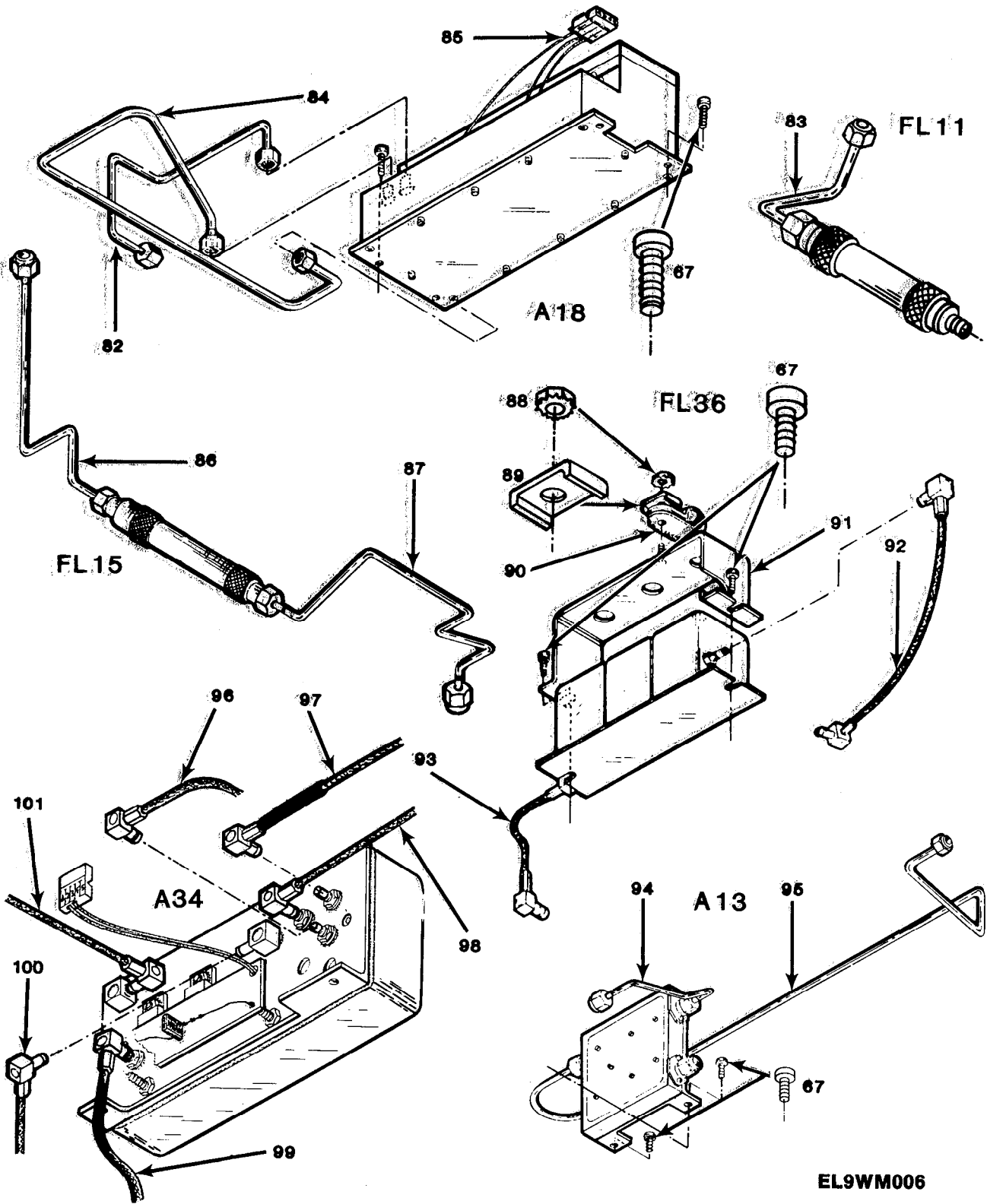
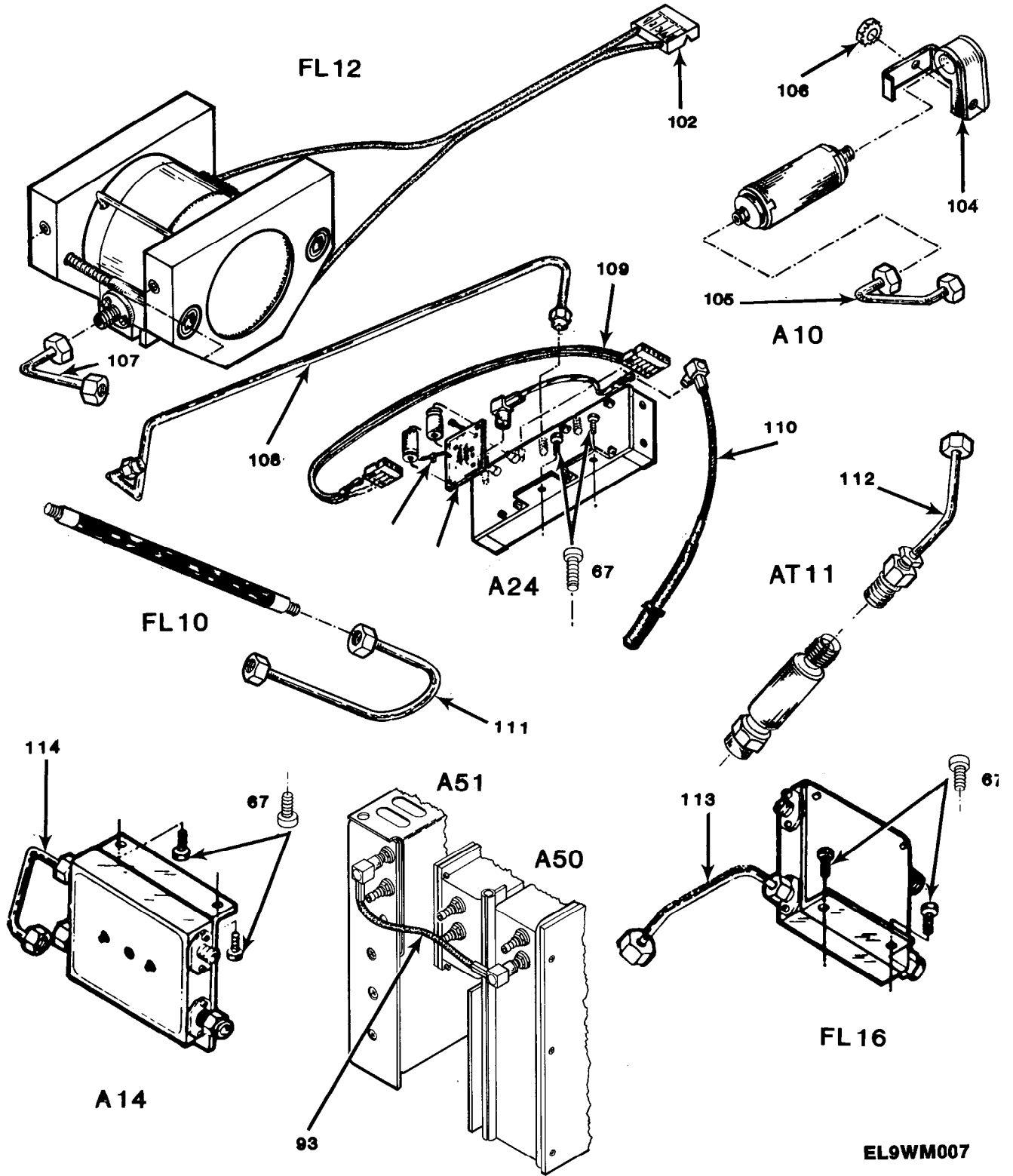


Figure 1. Spectrum Analyzer AN/USM-489(V)1 (Sheet 6 of 8)



EL9WM007

ITEM 103 NOT USED

Figure 1. Spectrum Analyzer AN/USM-489(V)1 (Sheet 7 of 8).

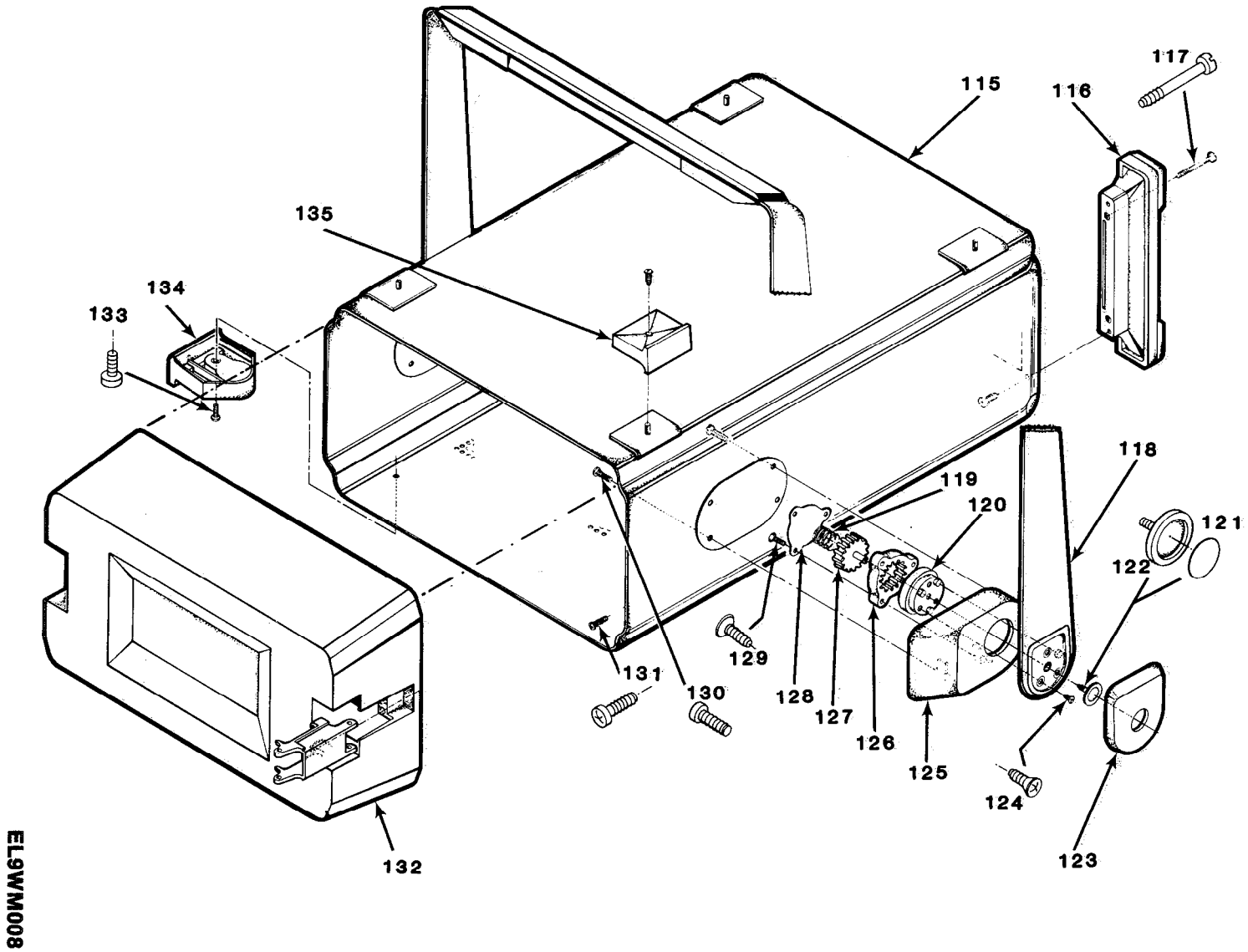


Figure 1. Spectrum Analyzer AN/USM-489(V)1 Sheet 8 of 8)

SECTION II			(4)	(5)	(6)
(1)	(2)	(3)	(4)	(5)	(6)
ITEM	SMR	FSCM	PART	DESCRIPTION AND USABLE ON CODES(UOC)	QTY
NO	CODE	FSCM	NUMBER		
GROUP 00 SPECTRUM ANALYZER, AN/USM-489(V)I					
FIGURE 1					
1	PADZZ	80009	378-0887-00	FILTER, MESH	1
2	XBDZZ	80009	378-0115-02	FILTER, LT, CRT	1
3	XBDZZ	80009	378-0115-01	FILTER, LT, CRT	1
4	PA02Z	91836	KN99-35	ADAPTER, CONNECTOR	1
5	PAHZZ	80009	016-0653-00	VISOR, CATHODE RAY T	1
6	PAOZZ	54267	14C-1009-212	CABLE ASSEMBLY, RADI	1
7	PAOZZ	80009	WM490K	MIXER, CRYSTAL, WAVEG	1
8	PAOZZ	80009	WM490A	MIXER, CRYSTAL, WAVEG	1
9	PAOZZ	80009	012-0076-00	CABLE ASSEMBLY, RADI	1
10	PAOZZ	80009	015-0385-00	DIPLEXER	1
11	PAOZZ	16428	CH8352	CABLE ASSEMBLY, POWE	1
12	XBDZZ	80009	437-0253-01	CABINET, SA	1
13	PAHZZ	80009	154-0809-00	ELECTRON TUBE	1
14	PAHZZ	80009	670-5549-03	CIRCUIT CARD ASSEMB	1
15	PAHZZ	80009	670-5557-02	CIRCUIT CARD ASSEMB	1
16	PAHZZ	80009	670-5559-04	CIRCUIT CARD ASSEMB	1
17	PAHZZ	80009	672-1133-00	CIRCUIT CARD ASSEMB	1
18	PAHZZ	80009	672-0808-00	CIRCUIT CARD ASSEMB	1
19	PAHDD	80009	644-0531-00	VARIABLE RESOLUTION	1
20	XBHHH	80009	621-0488-00	POWER SUPPLY FROM B010100 TO B 0 4 3 5 7 4	1
20	XBHHH	80009	621-0488-01	POWER SUPPLY FROM B053575 TO B 0 5 5 7 8 5	1
21	PAHZZ	80009	672-0810-01	CIRCUIT CARD ASSEMB	1
22	PAHZZ	80009	200-2264-00	CAP, FUSEHOLDER	1
23	PAOZZ	71400	MTH4	FUSE, CARTRIDGE	1
24	PAHZZ	80009	672-0816-02	CIRCUIT CARD ASSEMB	1
25	PAHZZ	80009	670-5555-04	CIRCUIT CARD ASSEMB	1
26	PAHZZ	80009	670-5542-01	CIRCUIT CARD ASSEMB	1
27	PAHZZ	80009	670-5546-02	CIRCUIT CARD ASSEMB	1
28	PAHZZ	80009	672-0814-01	CIRCUIT CARD ASSEMB	1
29	PAHDD	80009	119-1069-04	ELECTRONIC COMPONENT	1
30	PAHZZ	80009	672-0811-00	CIRCUIT CARD ASSEMB	1
31	PAHZZ	80009	672-0809-03	CIRCUIT CARD ASSEMB	1
32	PAHZZ	80009	672-0812-03	CIRCUIT CARD ASSEMB	1
33	PAHZZ	80009	672-0815-01	CIRCUIT CARD ASSEMB	1
34	PAHZZ	80009	670-5539-03	CIRCUIT CARD ASSEMB	1
35	PAHZZ	80009	670-5746-01	CIRCUIT CARD ASSEMB	1
36	PAHDD	80009	119-1007-07	ATTENUATOR, VARIABLE	1
37	PAHDD	80009	119-1017-01	CONVERTER ASSEMBLY	1
38	PAHZZ	80009	119-1161-01	SWITCH, ELECTRICAL	3
39	PAHZZ	80009	119-1164-00	BIAS RETURN	1
40	PAHDD	80009	119-1131-04	CIRCUIT CARD ASSEMB	1
41	PAHDD	80009	119-1096-02	CONVERTER ASSEMBLY	1
42	PAHZZ	80009	015-1027-00	FILTER, LOW PASS	2
43	PAHZZ	80009	119-1015-00	AMPLIFIER-FILTER AS	1
44	PAHZZ	80009	119-1025-00	FILTER	1

SECTION II				(5)	(6)
(1)	(2)	(3)	(4)		
ITEM	SMR		PART	DESCRIPTION AND USABLE ON CODES(UOC)	QTY
NO	CODE	FSCM	NUMBER		
45	PAHDD	80009	119-0752-02	OSCILLATOR,CRYSTAL	1
46	PAHZZ	80009	119-1019-00	DIVIDER,POWER, RADIO	1
47	PAHDD	80009	650-0296-02	CIRCUIT CARD ASSEMB	1
48	PAHZZ	80009	119-1023-02	OSCILLATOR, MIXER AS	1
49	PAHDD	80009	119-1010-02	CIRCUIT CARD ASSEMB	1
50	PAHZZ	80009	119-1140-00	FILTER, TUNABLE BAND	1
51	PAHZZ	80009	119-1061-00	LIMITER	1
52	PAHZZ	50140	11L250-X1800-0	FILTER, LOW PASS	1
53	PAHZZ	26805	2082-4182-03	ATTENUATOR, FIXED	2
54	PAHZZ	80009	119-1095-00	DIPLEXER	1
55	PAHZZ	80009	119-1018-00	DIR FILTER ASSY	1
56	PAHDD	80009	670-7050-03	CIRCUIT CARD ASSEMB	1
57	PADZZ	80009	670-5561-01	CIRCUIT CARD ASSEMB	1
58	PADZZ	80009	214-2772-01	ARM, SWITCH ACTUATOR	1
59	PADZZ	80009	384-1518-00	SHAFT, SWITCH	1
60	XBDZZ	80009	376-0053-00	CPLG, SHAFT, RGD	1
61	PADZZ	80009	384-1540-00	EXTENSION SHAFT	1
62	PADZZ	80009	214-2924-01	SWITCH, LEVER	1
63	PAOZZ	80009	366-1763-00	KNOB	1
64	XBDZZ	80009	377-0499-00	INSERT, SCR THD	1
65	PADZZ	80009	211-0666-00	SCREW, MACHINE	2
66	PAHZZ	80009	175-2183-00	CABLE ASSEMBLY	1
67	PAHZZ	80009	211-0008-01	SCREW, MACHINE	1
68	PADZZ	80009	175-9196-00	CABLE ASSEMBLY, RADI	1
69	PADZZ	06383	PLTIM	STRAP, TIEDOWN, ELECT	2
70	PAHZZ	80009	175-2541-00	CABLE ASSEMBLY,RADI	1
71	PADZZ	80009	198-3048-00	WIRE SET, ELECTRICAL	1
72	PAHZZ	78189	1202-00-00-0541C	WASHER, LOCK	4
73	XBDZZ	73743	12157-50	NUT, PLAIN, HEX	4
74	PAHZZ	80009	175-2535-00	CABLE ASSEMBLY, RADI	1
75	PAHZZ	80009	175-2530-00	CABLE ASSEMBLY, RADI	1
76	PAHZZ	80009	175-2534-00	CABLE ASSEMBLY, RADI	1
77	PAHZZ	80009	175-2529-00	CABLE ASSEMBLY, RADI	1
78	PAHZZ	80009	175-2761-00	CABLE ASSEMBLY, RADI	1
79	XBDZZ	80009	211-0128-00	SCREW, MACHINE	2
80	PAHZZ	80009	175-2764-00	CABLE ASSEMBLY, RADI	1
81	PAHZZ	80009	175-2542-00	CABLE ASSEMBLY, RADI	1
82	XBHZZ	80009	175-3849-01	CABLE ASSY, RF	1
83	PAHZZ	80009	175-2340-00	CABLE ASSEMBLY, RADI	1
84	XBHZZ	80009	175-2199-00	CABLE ASSY, RF	1
85	XBHZZ	80009	175-2370-00	CA ASSY, SP, ELEC	1
86	PAHZZ	80009	175-2338-00	CABLE ASSEMBLY, RADI	1
87	PAHZZ	80009	175-2339-00	CABLE ASSEMBLY, RADI	1
88	PADZZ	78189	511-081800-00	NUT, PLAIN, ASSEMBLED	2
89	XBDZZ	95987	C191	WSHR, LOOP CLAMP	1
90	XBDZZ	95987	3-8-6B	CLAMP, LOOP	1
91	XBDZZ	80009	407-2353-00	BRACKET, ANGLE	1
92	PAHZZ	80009	175-2409-00	CABLE ASSEMBLY, RADI	1
93	PAHZZ	80009	175-2406-00	CABLE ASSEMBLY, RADI	3
94	PAHZZ	80009	175-2763-00	CABLE ASSEMBLY, RADI	1
95	PAHZZ	80009	175-2762-00	CABLE ASSEMBLY, RADI	1
96	PAHZZ	80009	175-2413-00	CABLE ASSEMBLY, RADI	1

SECTION II					
(1)	(2)	(3)	(4)	(5)	(6)
ITEM NO	SMR CODE	FSCM	PART NUMBER	DESCRIPTION AND USABLE ON CODES(UOC)	QTY
97	PAHZZ	80009	175-2412-00	CABLE ASSEMBLY, RADI	1
98	XBHZZ	80009	175-2410-00	CABLE ASSEMBLY, RADI	1
99	XBHZZ	80009	175-2411-00	CABLE ASSEMBLY, RADI	1
100	PAHZZ	80009	175-2407-00	CABLE ASSEMBLY, RADI	2
101	XBHZZ	80009	175-2409-00	CABLE ASSEMBLY, RADI	1
102	XBHZZ	80009	352-0163-00	CONNECTOR BODY, RECE	1
104	XBDZZ	95987	1-2-6B	CLAMP, LOOP	1
105	PAHZZ	80009	175-2532-00	CABLE ASSEMBLY, RADI	1
106	PADZZ	78189	511-081800-00	NUT, PLAIN, ASSEMBLED	2
107	PAHZZ	80009	175-2531-00	CABLE ASSEMBLY, RADI	1
108	PAHZZ	80009	175-2345-00	CABLE ASSEMBLY, RADI	1
109	PAHZZ	80009	175-2372-00	CABLE ASSY, RF	1
110	PAHZZ	80009	175-2402-00	CABLE ASSEMBLY, RADI	1
111	PAHZZ	80009	175-2533-00	CABLE ASSEMBLY, RADI	1
112	PAHZZ	80009	175-2543-00	CABLE ASSEMBLY, RADI	1
113	PAHZZ	80009	175-2349-00	CABLE ASSEMBLY, RADI	1
114	PAHZZ	80009	175-2337-00	CABLE ASSEMBLY, RADI	1
115	XBDZZ	80009	437-0232-03	CABINET, SA	1
116	XBDZZ	80009	348-0589-00	FOOT, CABINET	2
117	XBDZZ	80009	212-0630-01	SCREW, SPCL MACH	4
118	XBDZZ	80009	367-0306-01	HANDLE, CARRYING	1
119	XBDZZ	80009	214-3200-00	SPRING, HLCPS	2
120	XBDZZ	80009	214-3198-00	INDEX, HANDLE	2
121	XBDZZ	80009	334-4661-00	MARKER, IDENT	2
122	XBDZZ	80009	214-3199-00	BUTTON, RELEASE	2
123	XBDZZ	80009	200-2622-00	CAP, HANDLE	2
124	XBDZZ	80009	212-0560-00	SCREW, MACHINE	6
125	XBDZZ	80009	380-0668-00	HOUSING, INDEX	2
126	XBDZZ	80009	105-0894-00	INDEX STOP, HDL	2
127	XBDZZ	80009	105-0893-00	INDEX RLSE, HDL	2
128	XBDZZ	80009	200-2694-00	COVER, INDEX	2
129	XBDZZ	80009	213-0918-00	SCREW, TPG, TR	6
130	XBDZZ	80009	213-0858-00	SCREW, TPG, TR	8
131	XBDZZ	80009	211-0513-00	SCREW, MACHINE	4
132	PAHZZ	80009	650-0568-00	COVER, TEST, SET	1
133	XBDZZ	80009	211-0674-00	SCREW, MACHINE	8
134	XBDZZ	80009	348-0585-00	FOOT, CABINET	4
135	XBDZZ	80009	348-0587-00	FOOT, CABINET	4

END OF FIGURE

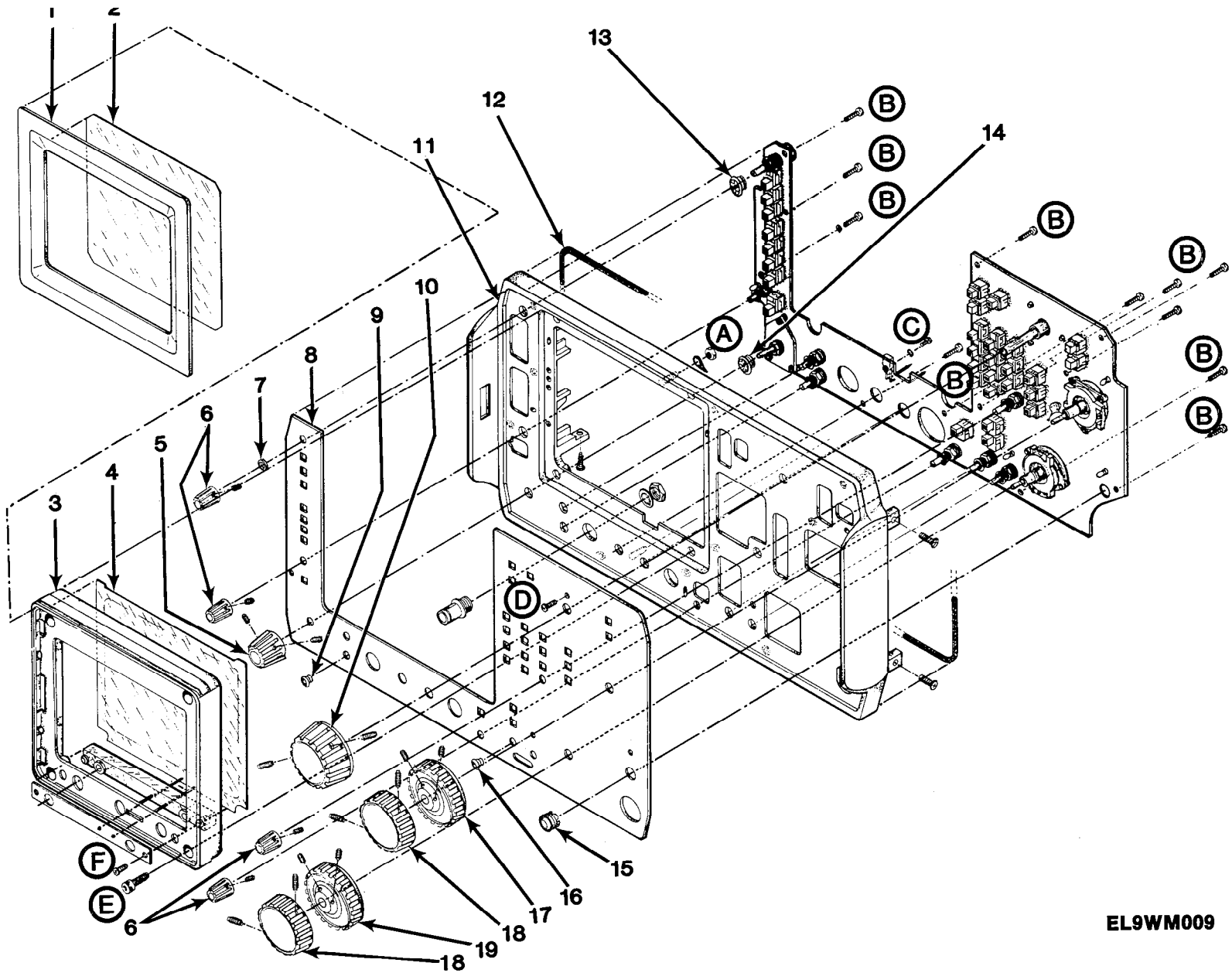
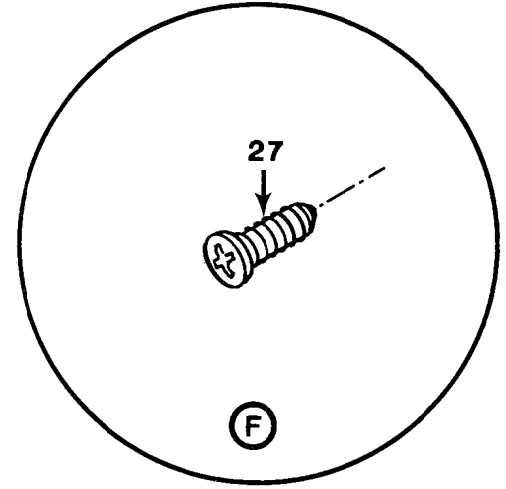
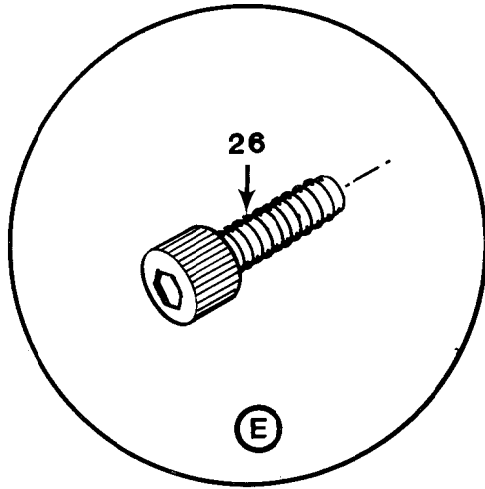
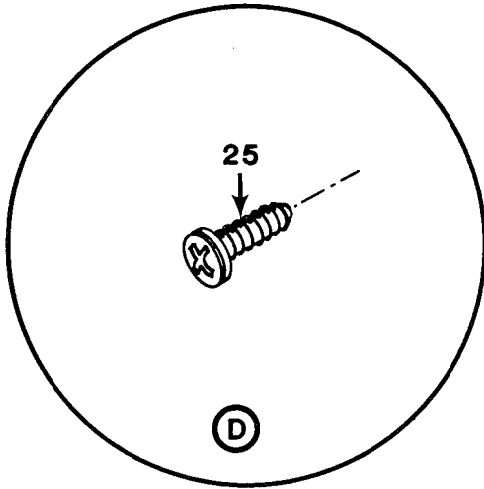
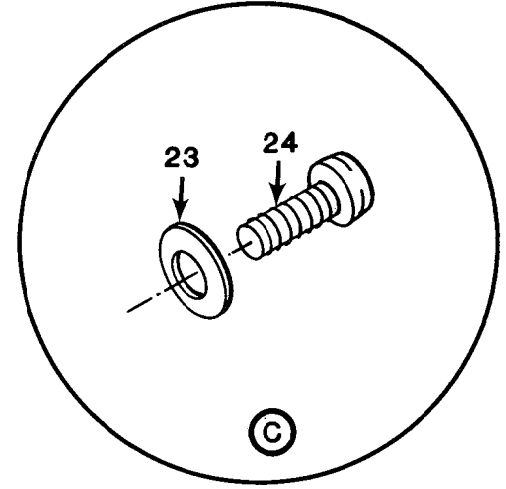
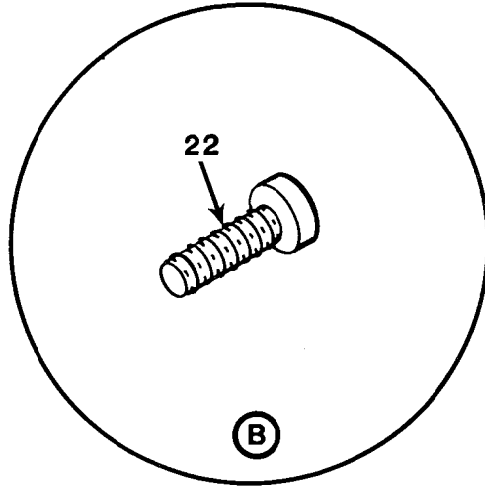
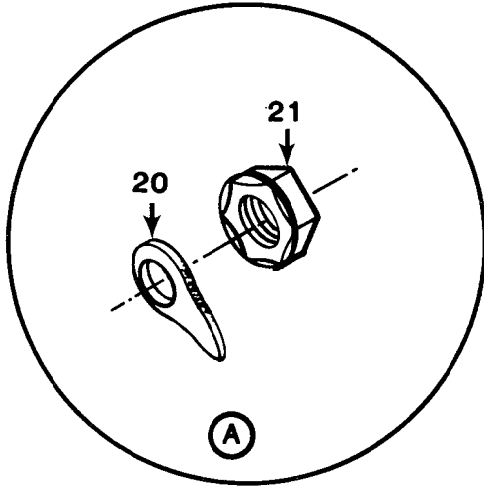


Figure 2. Front Panel Assembly (Sheet 1 of 2).

EL9WM009



EL9WM010

Figure 2. Front Panel Assembly (Sheet 2 of 2)

SECTION II			(4)	(5)	(6)
(1)	(2)	(3)	(4)	(5)	(6)
ITEM	STIR	FSCM	PART	DESCRIPTION AND USABLE ON CODES(UOC)	QTY
NO	CODE		NUMBER	GROUP 01 FRONT PANEL ASSEMBLY	
FIGURE 2					
1	XBDZZ	80009	426-1523-02	FRAME, MASK	1
2	XBDZZ	80009	378-0115-00	FILTER, LT, CRT	1
3	XBDZZ	80009	200-2216-01	RTNR, CRT SCALE	1
4	PADZZ	80009	337-2577-00	WINDOW, OBSERVATION	1
5	PAOZZ	80009	366-1781-00	KNOB	1
6	PAOZZ	80009	366-1786-01	KNOB	4
7	XBDZZ	86928	5612-32-31	WASHER, FLAT	2
8	XBHZZ	80009	333-2453-39	PANEL, FRONT	1
9	PADZZ	80009	358-0301-01	BUSHING, SLEEVE	2
10	PAOZZ	80009	366-1782-01	SHELL, KNOB	1
11	XBDZZ	80009	386-3845-01	SUBPANEL, FRONT	1
12	PADZZ	80009	361-0020-00	INSULATOR, ASHER	1
13	PADZZ	80009	214-2616-00	CONTACT, ELECTRICAL	9
14	PADZZ	80009	214-2617-00	SPRING, COMPRESSION	3
15	PADZZ	80009	358-0216-00	BUSHING, SLEEVE	1
16	PADZZ	80009	358-0301-02	BUSHING, SLEEVE	2
17	PAOZZ	80009	366-1779-00	KNOB	1
18	PAOZZ	80009	366-1780-01	SHELL, KNOB	2
19	PAOZZ	80009	366-1779-01	KNOB	1
20	XBDZZ	86928	A373-157-2	TERMINAL, LUG	2
21	PADZZ	78189	211-041800-00	NUT, PLAIN, ASSEMBLED	10
22	PADZZ	80009	211-0121-00	SCREW, ASSEMBLED WAS	11
23	XBDZZ	86928	A364-80	WASHER, SHOULDERED	1
24	XBDZZ	80009	211-0008-01	SCREW, MACHINE	26
25	PADZZ	80009	211-0087-01	SCREW, MACHINE	1
26	XBDZZ	80009	212-0128-00	SCREW, CAP	4
27	XBDZZ	80009	213-0772-00	SCREW, TPG, TF	2

END OF FIGURE

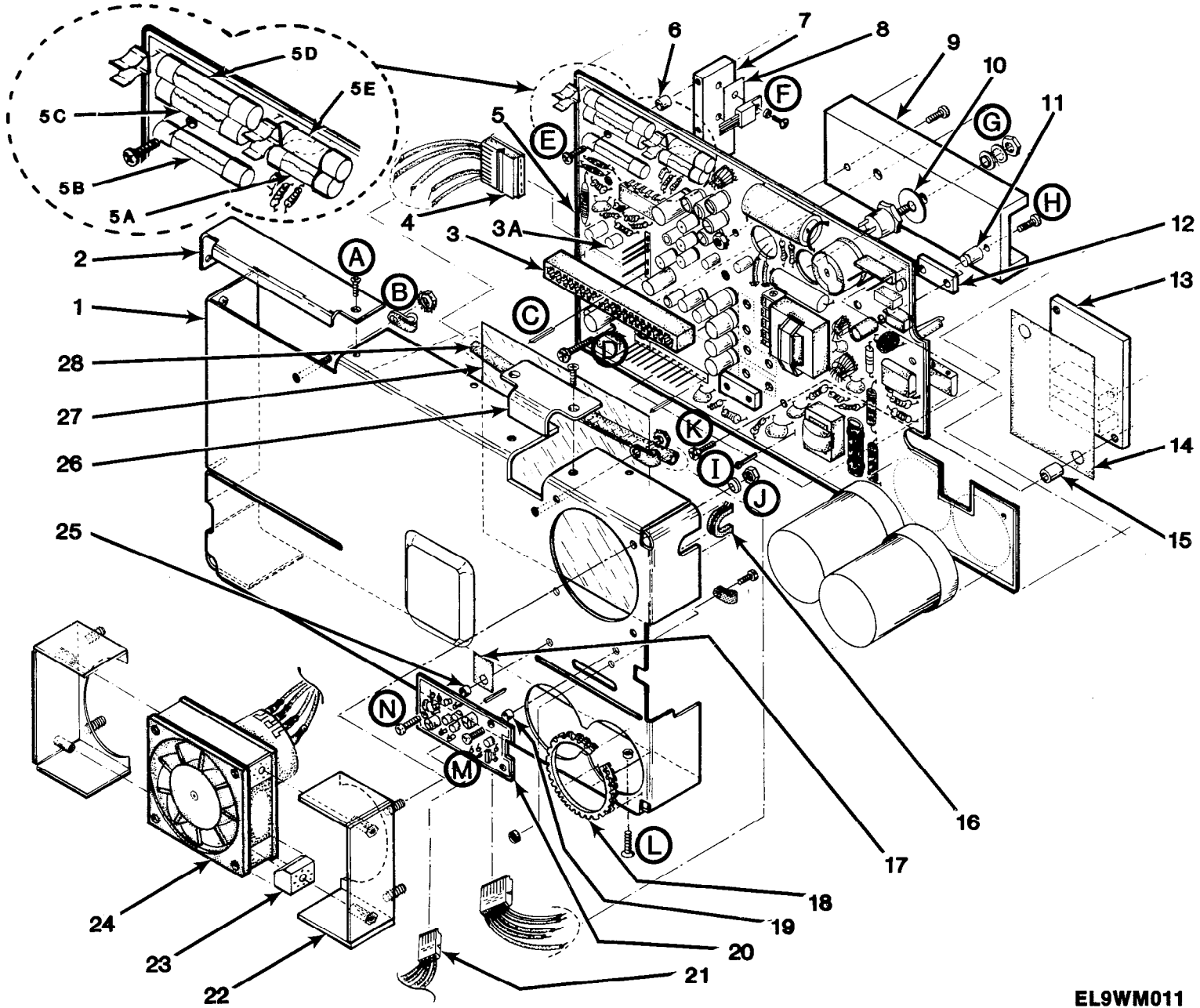
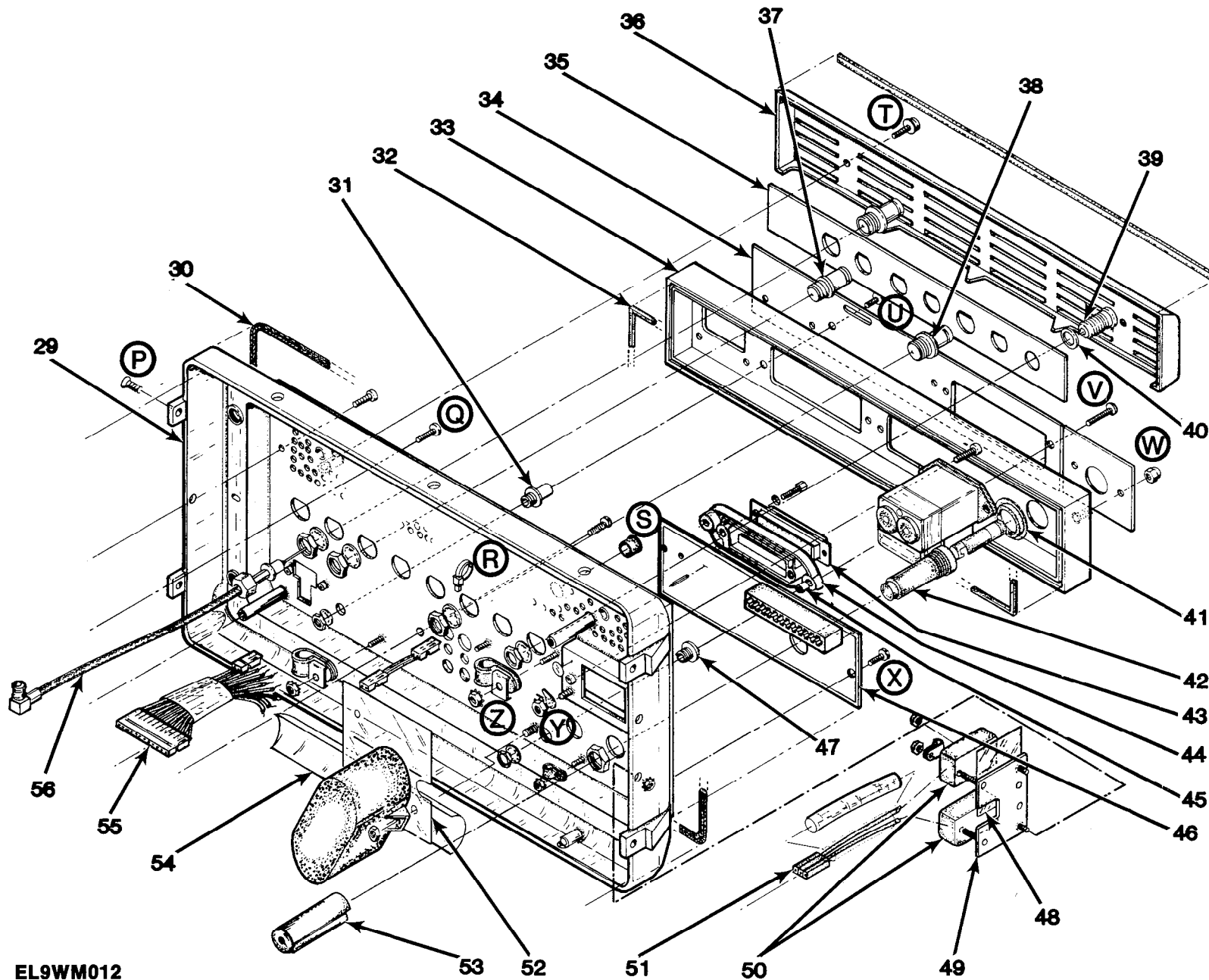


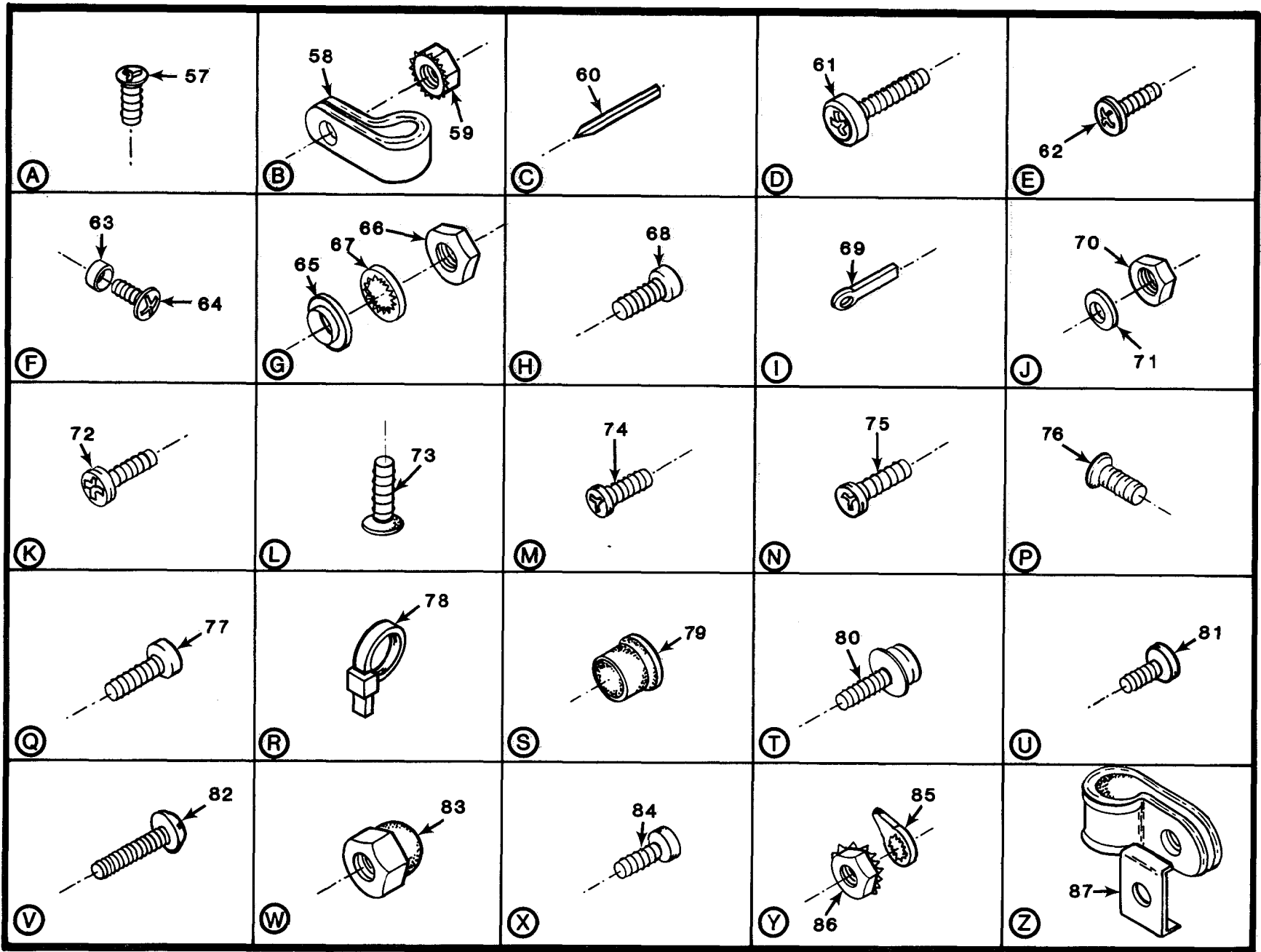
Figure 3. Main Power Supply A30 (Sheet 1 of 3)

EL9WM011



EL9WM012

Figure 3. Main Power Supply A30 (Sheet 2 of 3)



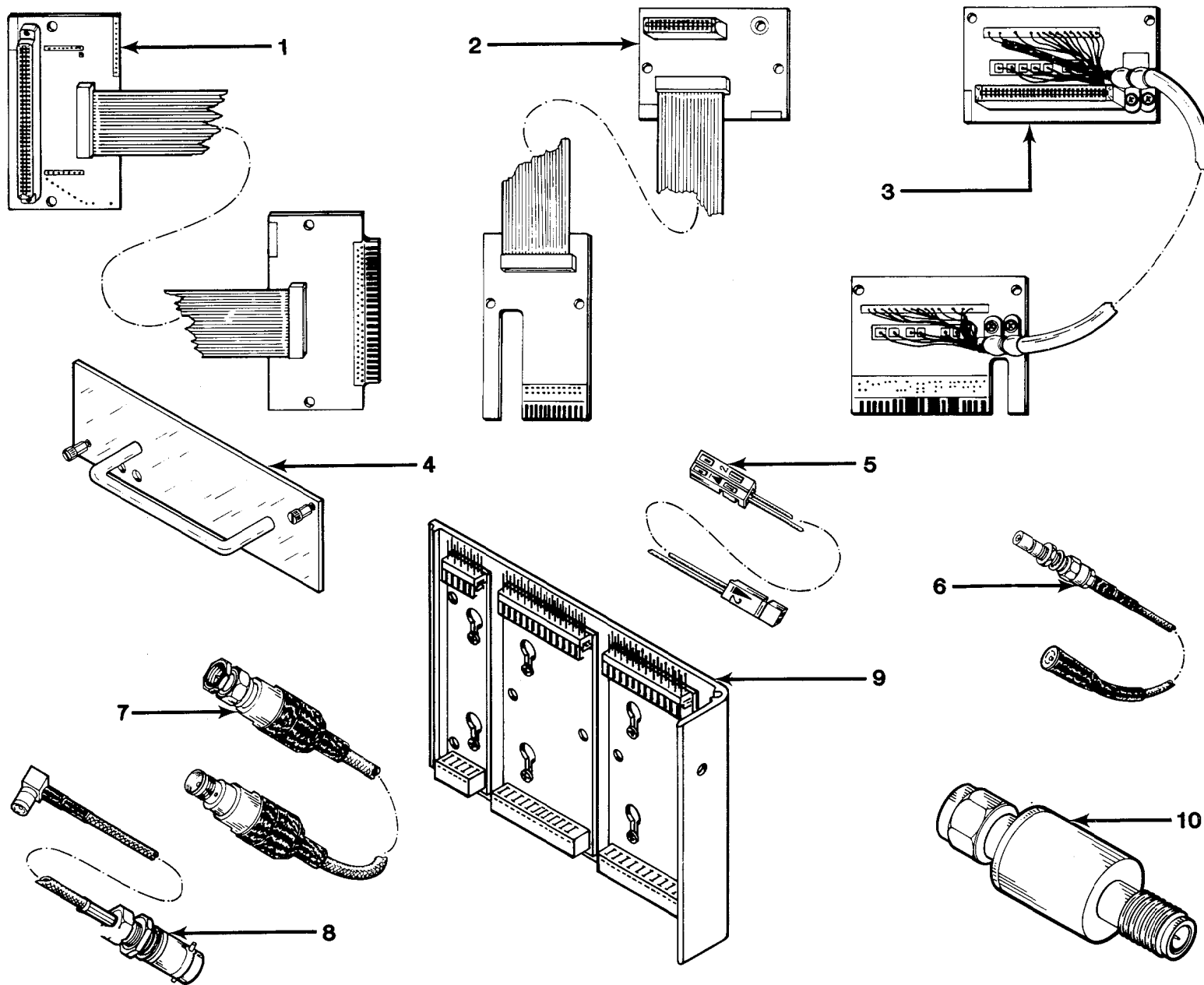
EL9WM013

Figure 3. Main Power Supply A30 (Sheet 3 of 3)

SECTION II				(5)	(6)
(1)	(2)	(3)	(4)		
ITEM	SMR	FSCM	PART	DESCRIPTION AND USABLE ON CODES(UOC)	QTY
NO	CODE		NUMBER	GROUP 0201 MAIN POWER SUPPLY, A30	
FIGURE 3					
1	XBHZZ	80009	337-2553-03	SHIELD, ELEC	1
2	XBDZZ	80009	200-2221-00	COVER, ACCESS	1
3	PADZZ	31781	307-040-526-300	CONNECTOR, RECEPTACL	1
3A	PADZZ	81349	FM02A125V-2A	FUSE, CARTRIDGE	1
4	PAHZZ	80009	175-3557-00	CABLE ASSEMBLY, SPEC	1
5	PAHDD	80009	670-5564-02	CIRCUIT CARD ASSEMB	1
5A	PADZZ	81349	F02A250V1/8A	FUSE, CARTRIDGE	1
5B	PADZZ	81349	F02A250VI-1/2A	FUSE, CARTRIDGE	1
5C	PADZZ	71400	AGC 2	FUSE, CARTRIDGE	1
5D	PADZZ	49956	226-7176-P36	FUSE, CARTRIDGE	1
5E	PADZZ	81349	FOIA250VIY16A	FUSE, CARTRIDGE	1
6	XBHZZ	80009	129-1002-00	SPACER, POST	2
7	PADZZ	80009	214-2863-00	HEAT SINK, ELECTRICA	1
8	PADZZ	80009	342-0354-00	INSULATOR, PLATE	3
9	PADZZ	80009	214-2972-02	HEAT SINK, ELECTRICA	1
10	PADZZ	13103	56-02-28	INSULATOR, WASHER	2
11	PADZZ	80009	129-0575-00	POST SPACER	2
12	PADZZ	80009	361-0933-00	SPACER, DIODE	3
13	PAHZZ	80009	214-3269-00	HEAT SINK, ELECTRICA	1
14	PAHZZ	80009	342-0566-00	INSULATOR, PLATE	1
15	XBHZZ	80009	361-0917-00	SPACER, SLEEVE	2
16	PAHZZ	80009	348-0171-00	GROMMET, NONMETALLIC	1
17	PAHZZ	80009	342-0354-00	INSULATOR, PLATE	2
18	PAHZZ	11897	122-37-2500	PLASTIC CHANNEL	1
19	XBHZZ	80009	361-0994-00	SPACER, SLEEVE	1
20	PAHZZ	80009	670-7226-00	CIRCUIT CARD ASSEMB	1
21	PAHZZ	80009	175-3159-00	CABLE ASSEMBLY, SPEC	1
22	XBHZZ	80009	407-2927-00	BRACKET, CMPNT	2
23	XBHZZ	80009	426-1920-00	MOUNT, RESILIENT	4
24	PAHZZ	80009	119-0830-01	FAN, TUBEAXIAL	1
25	XBHZZ	76854	3-5116-322	SPACER, SLEEVE	1
26	XBHZZ	80009	200-2512-00	COVER, ACCESS	1
27	PAHZZ	80009	342-0466-01	INSULATOR, FILM	1
28	XBHZZ	80009	162-0018-00	INSUL SLVG, ELEC	V 1
29	XBHZZ	80009	426-1466-03	FRAME SECT, SA	1
30	XBDZZ	80009	337-0925-05	SHLD GSKT, ELEK	1
31	XBHZZ	80009	129-0815-01	SPACER, POST	2
32	XBHZZ	80009	354-0607-00	PACKING, PREFMD	1
33	XBHZZ	80009	380-0629-01	HOUSING, REAR	1
34	XBHZZ	80009	333-2647-03	PANEL, REAR	1
35	XBHZZ	80009	333-2656-00	PANEL, REAR FROM B010100 TO B043574.	1
35	XBHZZ	80009	333-2656-02	PANEL, REAR FROM B053575 TO B055785.	1
36	XBHZZ	80009	378-0112-00	GRILLE, PLASTIC	1
37	PAHZZ	24931	28JR178-1	CONNECTOR, RECEPTACL	4
38	PAHZZ	80009	131-0274-00	CONNECTOR, RECEPTACL	1
39	PAHZZ	91836	1904-2M58	CONNECTOR, RECEPTACL	1
40	XBHZZ	80009	361-1045-00	SPACER, SLEEVE	1
41	XBHZZ	80009	348-0655-00	GASKET	1

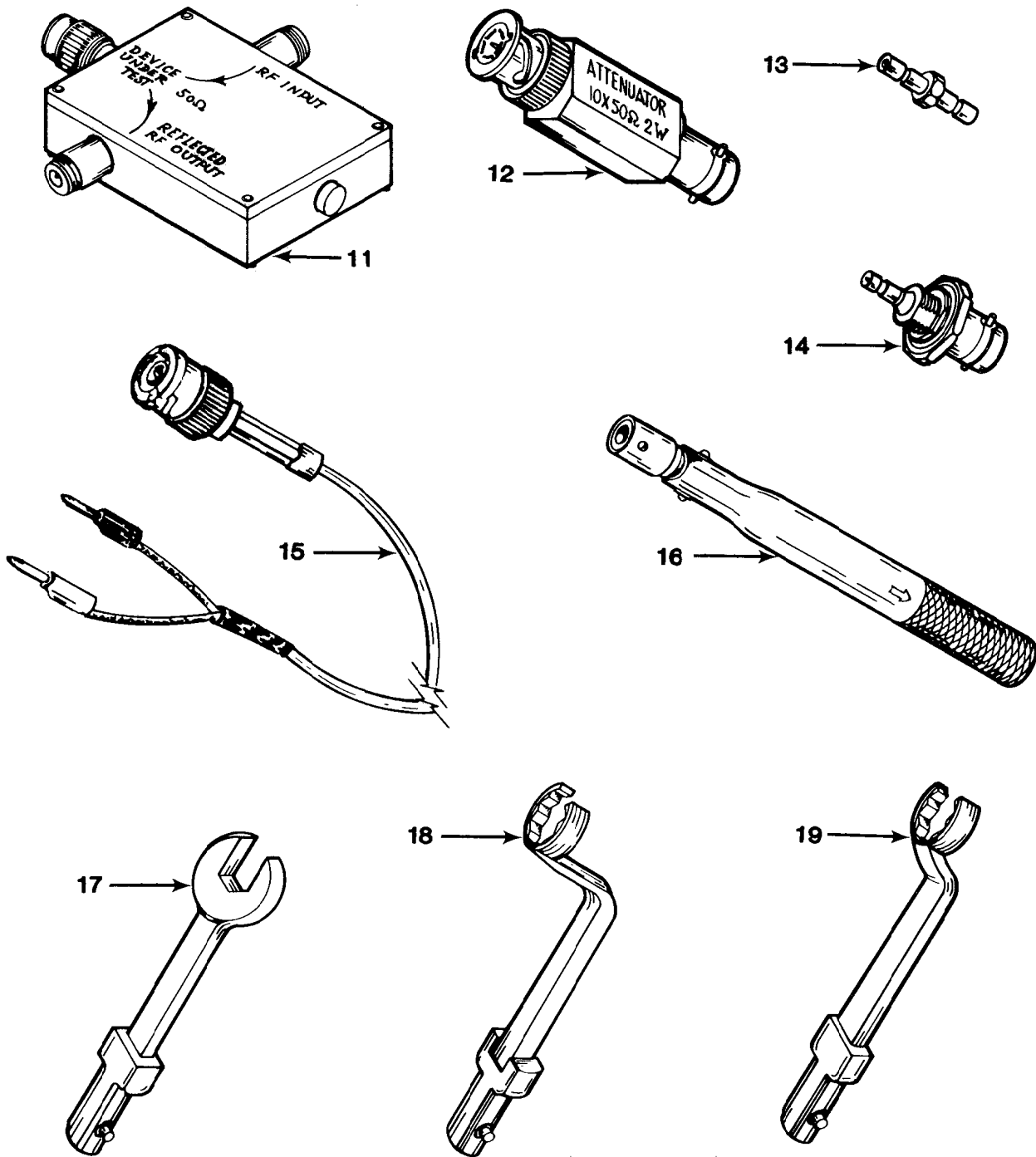
SECTION II				(5)	(6)
(1)	(2)	(3)	(4)		
ITEM NO	SMR CODE	FSCM	PART NUMBER	DESCRIPTION AND USABLE ON CODES(UOC)	QTY
42	PAHZZ	80009	204-0833-00	FUSEHOLDER, EXTRACTO.....	1
43	XBHZZ	71468	DB25S-F179	CONN, RCPT, ELEC.....	1
44	XBHZZ	80009	348-0599-00	SEAL,CONNECTOR.....	1
45	XBHZZ	80009	361-1044-00	SPACER, SLEEVE.....	2
46	PAHZZ	80009	670-5558-01	CIRCUIT CARD ASSEMB FROM B0I0I00	1
				TO B043574.....	
46	PAHZZ	80009	670-5558-02	CKT CARD ASSY FROM B053575 TO	1
				8055785.....	
47	XBHZZ	80009	129-0815-00	SPACER, POST.....	2
48	PAHZZ	80009	342-0460-00	INSULATOR, PLATE.....	1
49	XBHZZ	80009	386-4102-00	PLATE, MOUNTING.....	1
50	PAHZZ	80009	260-1931-00	SWITCH, SENSITIVE.....	2
51	PAHZZ	80009	198-3944-01	CABLE ASSEMBLY, POWE.....	1
52	PAHZZ	80009	342-0570-00	INSULATOR, FILM.....	1
53	PAHZZ	80009	200-0237-04	COVER, FUSE LEAD.....	1
54	PAHZZ	80009	342-0439-00	INSULATOR, PLATE.....	2
55	PAHZZ	80009	175-4131-00	CABLE ASSEMBLY.....	1
56	PAHZZ	80009	175-3619-01	CABLE ASSEMBLY.....	1
57	PAHZZ	80009	211-0105-01	SCREW, MACHINE.....	2
58	XBHZZ	95987	I-8-2	CLAMP, LOOP.....	6
59	PAHZZ	78189	211-041800-00	NUT, PLAIN, ASSEMBLED.....	11
60	XBHZZ	22526	48283-036	TERMINAL, STUD.....	4
61	PAHZZ	80009	211-0514-00	SCREW, MACHINE.....	2
62	PAHZZ	80009	211-0008-01	SCREW, MACHINE.....	1
63	PADZZ	52905	A7148516P2	WASHER, SHOULDERED.....	3
64	PADZZ	96906	MS35206-212	SCREW, MACHINE.....	3
65	PADZZ	80009	210-1355-00	WASHER, SHOULDERED.....	2
66	PADZZ	73743	3089-402	NUT, PLAIN, HEXAGON.....	2
67	PAHZZ	78189	1214-05-00-0541C	WASHER, LOCK.....	4
68	PADZZ	80009	211-0507-00	SCREW, MACHINE.....	2
69	PADZZ	59873	214-0579-00	TERMINAL, PLUG.....	3
70	PAHZZ	73743	12161-50	NUT, PLAIN, HEXAGON.....	4
71	PAHZZ	80009	210-0054-00	WASHER, LOCK.....	4
72	PAHZZ	80009	211-0007-01	SCREW, MACHINE.....	2
73	PAHZZ	80009	211-0101-00	SCREW, MACHINE.....	6
74	PAHZZ	80009	211-0012-01	SCREW, MACHINE.....	5
75	PAHZZ	80009	211-0198-00	SCREW, MACHINE.....	3
76	XBDZZ	80009	212-0650-00	SCREW, MACHINE.....	8
77	PAHZZ	80009	211-0097-01	SCREW, MACHINE.....	8
78	PAHZZ	06383	PLT1M	STRAP, TIEDOWN, ELECT.....	2
79	PAHZZ	80009	348-0056-00	GROMMET, PLASTIC.....	2
80	PADZZ	80009	211-0601-00	SCREW, ASSEMBLED WAS.....	14
81	PAHZZ	80009	211-0038-00	SCREW, MACHINE.....	2
82	PAHZZ	96906	MS24693S8	SCREW, MACHINE.....	2
83	PAHZZ	73743	93261-03	NUT, PLAIN, CAP.....	2
84	PAHZZ	80009	211-0116-00	SCREW, ASSEMBLED WAS.....	2
85	PAHZZ	96906	MS77068-2	TERMINAL, PLUG.....	1
86	PAHZZ	78189	511-061800-00	NUT, PLAIN, ASSEMBLED.....	1
87	PAHZZ	85480	C6SE-191GY	STRAP, RETAINING.....	4

END OF FIGURE



EL9WM014

Figure 4. Special Tools (Sheet 1 of 2)



EL9WM015

Figure 4. Special Tools (Sheet 2 of 2)

SECTION III				(5)	(6)
(1)	(2)	(3)	(4)		
ITEM	SMR		PART		
NO	CODE	FSCM	NUMBER	DESCRIPTION AND USABLE ON CODES(UOC)	QTY

GROUP 99 SPECIAL TOOLS LIST

FIGURE 4

BOI: 1 EA PER GS

1	PEHZZ	80009	067-0973-00	PANEL EXTENDER.....	
2	PEHZZ	80009	067-0972-00	ACCESSORY, INTERFACE.....	
3	PEHZZ	80009	067-0971-00	MIXER, STAGE, FREQUEN.....	
4	PEHZZ	80009	367-0285-00	MODULE HANDLE.....	
5	PEHZZ	80009	175-2901-00	RIBBON CABLE.....	
6	PEHZZ	80009	175-2902-00	COAT TAIL CABLE.....	
7	PEHZZ	80009	015-1006-00	CABLE ASSEMBLY, SPEC.....	
8	PEHZZ	80009	175-2412-00	CABLE ASSEMBLY, RADI.....	
9	PFHZZ	80009	672-0865-00	EXTENDER CARD, ELECT.....	
10	PEHZZ	26805	2082-4182-03	ATTENUATOR, FIXED.....	
11	PEHHH	80009	035-5046-00	BRIDGE.....	
12	PEHZZ	80009	011-0059-02	ATTENUATOR, FIXED.....	
13	PEHZZ	80009	103-0098-00	ADAPTER, CONNECTOR.....	
14	PEHZZ	80009	103-0180-00	ADAPTER, CONNECTOR.....	
15	PEHZZ	80009	175-1178-00	LEAD, TEST.....	
16	PEHZZ	80009	003-1316-00	WRENCH, TORQUE.....	
17	PEHZZ	80009	003-1320-00	WRENCH, TORQUE.....	
18	PEHZZ	80009	003-1319-00	WRENCH, TORQUE.....	
19	PEHZZ	80009	003-1318-00	WRENCH, TORQUE.....	

END OF FIGURE

SECTION IV

NATIONAL STOCK NUMBER AND PART NUMBER INDEX

STOCK NUMBER	FIG.	NATIONAL STOCK NUMBER INDEX ITEM	STOCK NUMBER	FIG.	ITEM
5305-00-005-0795	3	68	5355-01-137-9054	2	6
5305-00-005-8245	3	84	5999-01-137-9205	2	13
3120-00-016-8665	2	15	5960-01-137-9315	1	13
5920-00-050-4953	3	5B	5930-01-138-0661	3	50
5310-00-052-3632	1	88	6625-01-138-0685	3	4
	1	106	6625-01-138-0686	3	21
5310-00-063-7360	3	86	6625-01-138-0699	2	4
5305-00-115-1281	3	80	6625-01-138-0758	1	49
5310-00-193-6731	3	67	6625-01-138-0776	1	132
5920-00-232-3675	3	5E	5355-01-138-2120	2	5
5935-00-234-0563	3	39	5935-01-138-3304	3	3
5305-00-252-9667	2	22	5355-01-138-3312	2	17
5920-00-296-0451	3	5A	5355-01-138-3313	2	19
6625-00-336-7873	19	15	3120-01-138-3319	2	9
5340-00-364-9928	3	87	5920-01-138-8486	1	23
5935-00-369-7904	3	37	5995-01-139-0534	1	66
5310-00-471-8481	3	66	5995-01-139-3936	1	110
5995-00-477-1440	1	6	5355-01-139-4832	1	63
5935-00-484-7554	1	4	5995-01-139-9737	3	55
5305-00-570-0437	3	61	5995-01-140-0725	1	97
5985-00-572-7428	19	12		19	8
5935-00-689-4707	3	38	5995-01-140-0729	1	100
5940-00-827-2653	3	85	5915-01-141-0382	1	52
5305-00-829-1419	3	82	6625-01-153-9259	1	14
5920-00-832-6031	3	5C	6625-01-154-0018	1	5
5920-00-832-9180	3	5D	6625-01-154-3519	1	26
5310-00-836-3520	2	21	6625-01-154-4992	1	46
	3	59	6625-01-154-5080	3	5
6625-00-916-8025	1	9	6625-01-154-9087	3	46
5940-00-935-8313	3	69	5310-01-156-6423	3	70
5920-00-938-7660	3	3A	5305-01-158-6229	3	73
5305-00-993-0191	3	64	6625-01-170-9346	1	93
6150-01-019-3226	19	7	6625-01-170-9347	1	96
5915-01-024-1917	1	42	6625-01-172-1412	1	51
5975-01-044-3379	1	69	6625-01-173-1943	1	43
	3	78	6625-01-181-6376	1	37
5325-01-066-3944	3	16	6625-01-181-6377	1	39
5310-01-077-3135	1	72	6625-01-182-2355	1	54
5920-01-123-9854	3	42	5955-01-182-2381	1	45
5920-01-125-6469	3	53	5915-01-182-2996	1	50
5305-01-126-1185	3	75	6625-01-183-7673	1	76
5310-01-126-1222	3	63	6625-01-183-7674	1	74
5920-01-126-8941	1	22	6625-01-183-7675	1	70
5915-01-135-7739	1	44	6625-01-183-7676	1	81
6625-01-135-9740	1	92	6625-01-183-7678	1	95
6625-01-135-9741	1	94	6625-01-183-7679	1	80
5930-01-136-1995	1	58	6625-01-183-7801	1	112
5995-01-136-9725	3	56	6625-01-183-9505	1	114
6625-01-137-6635	3	20	6625-01-183-9506	1	86
6625-01-137-6636	1	15	6625-01-183-9507	1	87

SECTION IV

NATIONAL STOCK NUMBER AND PART NUMBER INDEX

STOCK NUMBER	NATIONAL STOCK NUMBER INDEX		FIG.	ITEM
	FIG.	ITEM		
6625-01-183-9508	1	83		
6625-01-183-9509	1	113		
6625-01-183-9513	1	77		
6625-01-183-9514	1	105		
6625-01-183-9515	1	111		
6625-01-183-9604	1	47		
6625-01-183-9613	1	16		
6625-01-183-9614	1	57		
5930-01-184-0586	1	38		
6625-01-184-6219	1	75		
6625-01-192-2010	1	41		
5985-01-192-2089	1	36		
6625-01-192-2179	1	29		
6625-01-192-2190	1	34		
6625-01-192-2192	1	27		
6625-01-192-2193	1	25		
6625-01-192-2195	1	35		
6625-01-193-3616	1	8		
6625-01-193-3617	1	7		
6625-01-194-5790	1	48		
5995-01-198-9977	1	107		
5995-01-198-9978	1	108		
5995-01-198-9979	1	78		
6625-01-200-9631	3	51		
5985-01-202-8770	1	53		
	19	10		
5985-01-203-1292	1	10		
6625-01-203-6007	1	40		
4931-01-214-8307	19	1		
6625-01-215-6150	19	11		
6625-01-215-6206	19	9		
6625-01-216-0997	1	17		
6625-01-220-5453	1	31		
6625-01-220-5454	1	56		
6625-01-233-0384	1	19		
6625-01-233-0433	1	33		
6625-01-233-0434	1	32		

SECTION IV

NATIONAL STOCK NUMBER AND PART NUMBER INDEX

FSCM	PART NUMBER	PART NUMBER INDEX STOCK NUMBER	FIG.	ITEM
71400	AGC 2	5920-00-832-6031	3	5C
86928	A364-80		2	23
86928	A373-157-2		2	20
52905	A7148516P2	5310-01-126-1222	3	63
16428	CH8352		1	11
95987	CI91		1	89
85480	C6SE-191GY	5340-00-364-9928	3	87
71468	DB25S-F179		3	43
81349	FM02A125V-2A	5920-00-938-7660	3	3A
81349	F0IA250V1/16A	5920-00-232-3675	3	5E
81349	F02A250VI-1/2A	5920-00-050-4953	3	5B
81349	F02A250V118A	5920-00-296-0451	3	5A
91836	KN99-35	5935-00-484-7554	1	4
96906	MS24693S8	5305-00-829-1419	3	82
96906	MS35206-212	5305-00-993-0191	3	64
96906	MS77068-2	5940-00-827-2653	3	85
71400	MTH4	5920-01-138-8486	1	23
06383	PLT1M	5975-01-044-3379	1	69
			3	78
80009	WM490A	6625-01-193-3616	1	8
80009	WM490K	6625-01-193-3617	1	7
80009	003-1316-00		19	16
80009	003-1318-00		19	19
80009	003-1319-00		19	18
80009	003-1320-00		19	17
80009	011-0059-02	5985-00-572-7428	19	12
80009	012-0076-00	6625-00-916-8025	1	9
80009	015-0385-00	5985-01-203-1292	1	10
80009	015-1006-00	6150-01-019-3226	19	7
80009	015-1027-00	5915-01-024-1917	1	42
80009	016-0653-00	6625-01-154-0018	1	5
80009	035-5046-00	6625-01-215-6150	19	11
80009	067-0971-00		19	3
80009	067-0972-00		19	2
80009	067-0973-00	4931-01-214-8307	19	1
95987	I-2-6B		1	104
95987	I-8-2		3	58
80009	103-0098-00		19	13
80009	105-0893-00		1	127
80009	105-0894-00		1	126
50140	IIL250-X1800-0	5915-01-141-0382	1	52
80009	119-0752-02	5955-01-182-2381	1	45
80009	119-0830-01		3	24
80009	119-1007-07	5985-01-192-2089	1	36
80009	119-1010-02	6625-01-138-0758	1	49
80009	119-1015-00	6625-01-173-1943	1	43
80009	119-1017-01	6625-01-181-6376	1	37
80009	119-1018-00		1	55
80009	119-1019-00	6625-01-154-4992	1	46
80009	119-1023-02	6625-01-194-5790	1	48
80009	119-1025-00	5915-01-135-7739	1	44

SECTION IV

NATIONAL STOCK NUMBER AND PART NUMBER INDEX

FSCM	PART NUMBER	PART NUMBER INDEX STOCK NUMBER	FIG.	ITEM
80009	119-1061-00	6625-01-172-1412	1	51
80009	119-1069-04	6625-01-192-2179	1	29
80009	119-1095-00	6625-01-182-2355	1	54
80009	119-1096-02	6625-01-192-2010	1	41
80009	119-1131-04	6625-01-203-6007	1	40
80009	119-1140-00	5915-01-182-2996	1	50
80009	119-1161-01	5930-01-184-0586	1	38
80009	119-1164-00	6625-01-181-6377	1	39
78189	1202-00-00-0541C	5310-01-077-3135	1	72
78189	1214-05-00-0541C	5310-00-193-6731	3	67
73743	12157-50		1	73
73743	12161-50	5310-01-156-6423	3	70
11897	122-37-2500		3	18
80009	129-0575-00		3	11
80009	129-0815-00		3	47
80009	129-8815-01		3	31
80009	129-1002-00		3	6
80009	131-0274-00	5935-00-689-4707	3	38
54267	14C-1009-212	5995-00-477-1440	1	6
80009	154-0809-00	5960-01-137-9315	1	13
80009	162-0018-00		3	28
80009	175-1178-00	6625-00-336-7873	19	15
80009	175-2183-00	5995-01-139-0534	1	66
80009	175-2199-00		1	84
80009	175-2337-00	6625-01-183-9505	1	114
80009	175-2338-00	6625-01-183-9506	1	86
80009	175-2339-00	6625-01-183-9507	1	87
80009	175-2340-00	6625-01-183-9508	1	83
80009	175-2345-00	5995-01-198-9978	1	108
80009	175-2349-00	6625-01-183-9509	1	113
80009	175-2370-00		1	85
80009	175-2372-00		1	109
80009	175-2402-00	5995-01-139-3936	1	110
80009	175-2406-00	6625-01-170-9346	1	93
80009	175-2407-00	5995-01-140-0729	1	100
80009	175-2409-00	6625-01-135-9740	1	92
			1	101
80009	175-2410-00		1	98
80009	175-2411-00		1	99
80009	175-2412-00	5995-01-140-0725	1	97
			19	8
80009	175-2413-00	6625-01-170-9347	1	96
80009	175-2529-00	6625-01-183-9513	1	77
80009	175-2530-00	6625-01-184-6219	1	75
80009	175-2531-00	5995-01-198-9977	1	107
80009	175-2532-00	6625-01-183-9514	1	105
80009	175-2533-00	6625-01-183-9515	1	111
80009	175-2534-00	6625-01-183-7673	1	76
80009	175-2535-00	6625-01-183-7674	1	74
80009	175-2541-00	6625-01-183-7675	1	70
80009	175-2542-00	6625-01-183-7676	1	81

SECTION IV

NATIONAL STOCK NUMBER AND PART NUMBER INDEX

FSCM	PART NUMBER	PART NUMBER INDEX STOCK NUMBER	FIG.	ITEM
80009	175-2543-00	6625-01-183-7801	1	112
80009	175-2761-00	5995-01-198-9979	1	78
80009	175-2762-00	6625-01-183-7678	1	95
80009	175-2763-00	6625-01-135-9741	1	94
80009	175-2764-00	6625-01-183-7679	1	80
80009	175-2901-00		19	5
80009	175-2902-00		19	6
80009	175-3159-00	6625-01-138-0686	3	21
80009	175-5557-00	6625-01-138-0685	3	4
80009	175-3619-01	5995-01-136-9725	3	56
80009	175-3849-01		1	82
80009	175-4131-00	5995-01-139-9737	3	55
80009	175-9196-00		1	68
91836	1904-2M58	5935-00-234-0563	3	39
80009	198-3048-00		1	71
80009	198-3944-01	6625-01-200-9631	3	51
80009	200-0237-04	5920-01-125-6469	3	53
80009	200-2216-01		2	3
80009	200-2221-00		3	3
80009	200-2264-00	5920-01-126-8941	1	22
80009	200-2512-00		3	26
80009	200-2622-00		1	123
80009	200-2694-00		1	128
80009	204-0833-00	5920-01-123-9854	3	42
26805	2082-4182-03	5985-01-202-8770	1	53
			19	10
80009	210-0054-00		3	71
80009	210-1355-00		3	65
80009	211-0007-01		3	72
80009	211-0008-01		1	67
			2	24
			3	62
80009	211-0012-01		3	74
80009	211-0038-00		3	81
80009	211-0087-01		2	25
80009	211-0097-01		3	77
80009	211-0101-00	5305-01-158-6229	3	73
80009	211-0105-01		3	57
80009	211-0116-00	5305-00-005-8245	3	84
80009	211-0121-00	5305-00-252-9667	2	22
80009	211-0128-00		1	79
80009	211-0198-00	5305-01-126-1185	3	75
78189	211-041800-00	5310-00-836-3520	2	21
			3	59
80009	211-0507-00	5305-00-005-0795	3	68
80009	211-0513-00		1	131
80009	211-0514-00	5305-00-570-0437	3	61
80009	211-0601-00	5305-00-115-1281	3	80
80009	211-0666-00		1	65
80009	211-0674-00		1	133
80009	212-0128-00		2	26

SECTION IV

NATIONAL STOCK NUMBER AND PART NUMBER INDEX

FSCM	PART NUMBER	PART NUMBER INDEX STOCK NUMBER	FIG.	ITEM
80009	212-0560-00		1	124
80009	212-0630-01		1	117
80009	212-0650-00		3	76
80009	213-0772-00		2	27
80009	213-0858-00		1	130
80009	213-0918-00		1	129
59873	214-0579-60	5940-00-935-8313	3	69
80009	214-2616-00	5999-01-137-9205	2	13
80009	214-2617-00		2	14
80009	214-2772-01	5930-01-136-1995	1	58
80009	214-2863-00		3	7
80009	214-2924-01		1	62
80009	214-2972-02		3	9
80009	214-3198-00		1	120
80009	214-3199-00		1	122
80009	214-3200-00		1	119
80009	214-3269-00		3	13
49956	226-7176-P36	5920-00-832-9180	3	5D
80009	260-1931-00	5930-01-138-0661	3	50
24931	28JR178-1	5935-00-369-7904	3	59
76854	3-5116-322		3	25
95987	3-8-6B		1	90
31781	307-040-526-300	5935-01-138-3304	3	3
73743	3089-402	5310-00-471-8481	3	663
80009	333-2453-39		2	8
80009	333-2647-03		3	34
80009	333-2656-00		3	35
80009	333-2656-02		3	35
80009	334-4661-00		1	121
80009	337-0925-05		3	30
80009	337-2553-03		3	1
80009	337-2577-00	6625-01-138-0699	2	4
80009	342-0354-00		3	8
			3	17
80009	342-0439-00		3	54
80009	342-0460-00		3	48
80009	342-0466-01		3	27
80009	342-0566-00		3	14
80009	342-0570-00		3	52
80009	348-0056-00		3	79
80009	348-0171-00	5325-01-066-3944	3	16
80009	348-0585-00		1	134
80009	348-0587-00		1	135
80009	348-0589-00		1	116
80009	348-0599-00		3	44
80009	348-0655-00		3	2
80009	352-0163-00		1	102
80009	354-0607-00		3	32
80009	358-0216-00	3120-00-016-8665	2	15
80009	358-0301-01	3120-01-138-3319	2	9
80009	358-0301-02		2	169

SECTION IV

NATIONAL STOCK NUMBER AND PART NUMBER INDEX

FSCM	PART NUMBER	PART NUMBER INDEX STOCK NUMBER	FIG.	ITEM
80009	361-0020-00		2	12
80009	361-0917-00		3	15
80009	361-0933-00		3	12
80009	361-0994-00		3	19
80009	361-1044-00		3	45
80009	361-1045-00		3	40
80009	366-1763-00	5355-01-139-4832	1	63
80009	366-1779-00	5355-01-138-3312	2	17
80009	366-1779-01	5355-01-138-3313	2	19
80009	366-1780-01		2	18
80009	366-1781-00	5355-01-138-2120	2	5
80009	366-1782-01		2	10
80009	366-1786-01	5355-01-137-9054	2	6
80009	367-0285-00		19	4
80009	367-0306-01		1	118
80009	376-0053-00		1	60
80009	377-0499-00		1	64
80009	378-0112-00		3	36
80009	378-0115-00		2	2
80009	378-0115-01		1	3
80009	378-0115-02		1	2
80009	378-0887-00		1	1
80009	380-0629-01		3	33
80009	380-0668-00		1	125
80009	384-1518-00		1	59
80009	384-1540-00		1	61
80009	386-3845-01		2	11
80009	386-4102-00		3	49
80009	407-2353-00		1	91
80009	407-2927-00		3	22
80009	426-1466-03		3	29
80009	426-1523-02		2	1
80009	426-1920-00		3	23
80009	437-0232-03		1	115
80009	437-0253-01		1	12
22526	48283-036		3	60
78189	511-061800-00	5310-00-063-7360	3	86
78189	511-081800-00	5310-00-052-3632	1	88
			1	106
13103	56-02-28		3	10
86928	5612-32-31		2	7
80009	621-0488-00		1	20
80009	621-0488-01		1	20
80009	644-0531-00	6625-01-233-0384	1	19
80009	650-0296-02	6625-01-183-9604	1	47
80009	650-0568-00	6625-01-138-0776	1	132
80009	670-5539-03	6625-01-192-2190	1	34
80009	670-5542-01	6625-01-154-3519	1	26
80009	670-5546-02	6625-01-192-2192	1	27
80009	670-5549-03	6625-01-153-9259	1	14
80009	670-5555-04	6625-01-192-2193	1	25

SECTION IV

NATIONAL STOCK NUMBER AND PART NUMBER INDEX

FSCM	PART NUMBER	PART NUMBER INDEX STOCK NUMBER	FIG.	ITEM
80009	670-5557-02	6625-01-137-6636	1	15
80009	670-5558-01	6625-01-154-9087	3	46
80009	670-5558-02		3	46
80009	670-5559-04	6625-01-183-9613	1	16
80009	670-5561-01	6625-01-183-9614	1	57
80009	670-5564-02	6625-01-154-5080	3	5
80009	670-5746-01	6625-01-192-2195	1	35
80009	670-7050-03	6625-01-220-5454	1	56
80009	670-7226-00	6625-01-137-6635	3	20
80009	672-0808-00		1	18
80009	672-0809-03	6625-01-220-5453	1	31
80009	672-0810-01		1	21
80009	672-0811-00		1	30
80009	672-0812-03	6625-01-233-0434	1	32
80009	672-0814-01		1	28
80009	672-0815-01	6625-01-233-0433	1	33
80009	672-0816-02		1	24
80009	672-0865-00	6625-01-215-6206	19	9
80009	672-1133-00	6625-01-216-0997	1	17
73743	93261-03		3	83

By Order of the Secretary of the Army:

Official:

JOHN A. WICKHAM, JR.
General, United States Army
Chief of Staff

R.L. DILWORTH
Brigadier General, United States Army
The Adjutant General

DISTRIBUTION:

To be distributed in accordance with DA Form 12-51 literature requirements for AN/USM-489(V)I.

RECOMMENDED CHANGES TO EQUIPMENT TECHNICAL PUBLICATIONS



THEN... JOT DOWN THE DOPE ABOUT IT ON THIS FORM. CAREFULLY TEAR IT OUT, FOLD IT AND DROP IT IN THE MAIL!

SOMETHING WRONG WITH THIS PUBLICATION?

FROM: (PRINT YOUR UNIT'S COMPLETE ADDRESS)

CDR, 1st Bn, 65th ADA
ATTN: SP4 John Doe
Key West, FL 33040

DATE SENT
14 January 1979

PUBLICATION NUMBER

TM 9-1430-550-34-1

PUBLICATION DATE

7 Sep 72

PUBLICATION TITLE

Unit of Radar Set
AN/MPQ-50 Tested at the HFC

BE EXACT... PIN-POINT WHERE IT IS

PAGE NO	PARA-GRAPH	FIGURE NO	TABLE NO
9-19		9-5	
21-2	step 1C		21-2

SAMPLE

IN THIS SPACE TELL WHAT IS WRONG AND WHAT SHOULD BE DONE ABOUT IT:

"B" Ready Relay K11 is shown with two #9 contacts. That contact which is wired to pin 8 of relay K16 should be changed to contact #10.

Reads: Multimeter B indicates 600 K ohms to 9000 K ohms.

Change to read: Multimeter B indicates 600 K ohms minimum.

Reason: Circuit being checked could measure infinity. Multimeter can read above 9000 K ohms and still be correct.

NOTE TO THE READER:

Your comments will go directly to the writer responsible for this manual, and he will prepare the reply that is returned to you. To help him in his evaluation of your recommendations, please explain the reason for each of your recommendations, unless the reason is obvious.

All comments will be appreciated, and will be given immediate attention. Handwritten comments are acceptable.

For your convenience, blank "tear out" forms, preprinted, addressed, and ready to mail, are included in this manual.

PRINTED NAME, GRADE OR TITLE AND TELEPHONE NUMBER

SP4 John Doe, Autovon 222-222

SIGN HERE

RECOMMENDED CHANGES TO EQUIPMENT TECHNICAL PUBLICATIONS

SOMETHING WRONG WITH THIS PUBLICATION?



THEN... JOT DOWN THE DOPE ABOUT IT ON THIS FORM, CAREFULLY CUT IT OUT, FOLD IT AND DROP IT IN THE MAIL!

FROM: (PRINT YOUR UNIT'S COMPLETE ADDRESS)

DATE SENT

PUBLICATION NUMBER

PUBLICATION DATE

PUBLICATION TITLE

BE EXACT... PIN-POINT WHERE IT IS

PAGE NO.	PARA-GRAPH	FIGURE NO.	TABLE NO.
----------	------------	------------	-----------

IN THIS SPACE TELL WHAT IS WRONG AND WHAT SHOULD BE DONE ABOUT IT:

CUT ALONG THIS LINE

PRINTED NAME, GRADE OR TITLE, AND TELEPHONE NUMBER

SIGN HERE

DA FORM 1 JUL 79 2028-2

PREVIOUS EDITIONS ARE OBSOLETE.

PS - - IF YOUR OUTFIT WANTS TO KNOW ABOUT YOUR RECOMMENDATION MAKE A CARBON COPY OF THIS AND GIVE IT TO YOUR HEADQUARTERS

FILL IN YOUR
UNIT'S ADDRESS



FOLD BACK

DEPARTMENT OF THE ARMY

Commander
U.S. Army Aviation and Missile Command
ATTN: AMSAM-MMC-LS-P
Redstone Arsenal, AL 35898-5230

CUT ALONG THIS LINE

RECOMMENDED CHANGES TO EQUIPMENT TECHNICAL PUBLICATIONS

SOMETHING WRONG

WITH THIS PUBLICATION?



THEN... JOT DOWN THE DOPE ABOUT IT ON THIS FORM, CAREFULLY CUT IT OUT, FOLD IT AND DROP IT IN THE MAIL!

FROM: (PRINT YOUR UNIT'S COMPLETE ADDRESS)

DATE SENT

PUBLICATION NUMBER

PUBLICATION DATE

PUBLICATION TITLE

BE EXACT... PIN-POINT WHERE IT IS

PAGE NO.

PARA-GRAPH

FIGURE NO.

TABLE NO.

IN THIS SPACE TELL WHAT IS WRONG AND WHAT SHOULD BE DONE ABOUT IT:

CUT ALONG THIS LINE

PRINTED NAME, GRADE OR TITLE, AND TELEPHONE NUMBER

SIGN HERE

DA FORM 1 JUL 79 **2028-2**

PREVIOUS EDITIONS ARE OBSOLETE.

PS - - IF YOUR OUTFIT WANTS TO KNOW ABOUT YOUR RECOMMENDATION MAKE A CARBON COPY OF THIS AND GIVE IT TO YOUR HEADQUARTERS

FILL IN YOUR
UNIT'S ADDRESS



FOLD BACK

DEPARTMENT OF THE ARMY

**Commander
U.S. Army Aviation and Missile Command
ATTN: AMSAM-MMC-LS-P
Redstone Arsenal, AL 35898-5230**

CUT ALONG THIS LINE

SOMETHING WRONG

WITH THIS PUBLICATION?



THEN... JOT DOWN THE DOPE ABOUT IT ON THIS FORM, CAREFULLY CUT IT OUT, FOLD IT AND DROP IT IN THE MAIL!

FROM: (PRINT YOUR UNIT'S COMPLETE ADDRESS)

DATE SENT

PUBLICATION NUMBER

PUBLICATION DATE

PUBLICATION TITLE

BE EXACT... PIN-POINT WHERE IT IS

IN THIS SPACE TELL WHAT IS WRONG AND WHAT SHOULD BE DONE ABOUT IT:

PAGE NO.

PARA-GRAPH

FIGURE NO.

TABLE NO.

CUT ALONG THIS LINE

PRINTED NAME, GRADE OR TITLE, AND TELEPHONE NUMBER

SIGN HERE

FILL IN YOUR
UNIT'S ADDRESS



FOLD BACK

DEPARTMENT OF THE ARMY

Commander
U.S. Army Aviation and Missile Command
ATTN: AMSAM-MMC-LS-P
Redstone Arsenal, AL 35898-5230

CUT ALONG THIS LINE

