

# LD120/121A

## 4½ Digit A/D Converter Set



### FEATURES

- 0.005%  $\pm 1$  Count Accuracy
- $\pm 200.0$  mV and  $\pm 2.000$  V Ranges
- Auto Zero
- Auto-Polarity
- Over and Under Range Outputs

### BENEFITS

- High System Performance
- Single Resistor Programming
- Nulls Out Offsets
- Single Reference
- Easily Interfaced

### APPLICATIONS

- High Accuracy Digital Voltmeters and Panel Meters
- Digital Scales and Thermometer
- $\mu$ P Data Acquisition Systems
- Scientific Instrumentation

### DESCRIPTION

The LD120 and LD121A form a precision 4 1/2 digit A/D converter system for use in display and microprocessor based data acquisition applications. Based on Siliconix's "Quantized Feedback" technique, intrinsic features include auto-polarity, auto-zero, and ratiometric operation. Except for a stable reference, no critical components are required to achieve rated performance. The technique used offers superior linearity, normal mode rejection, and stability due to the simultaneous integration of the unknown input and the reference voltages. Unlike other conversion techniques, the integrator output voltage never represents more than 100 counts. Thus, critical, high resolution performance is not required of either the integrator or the comparator.

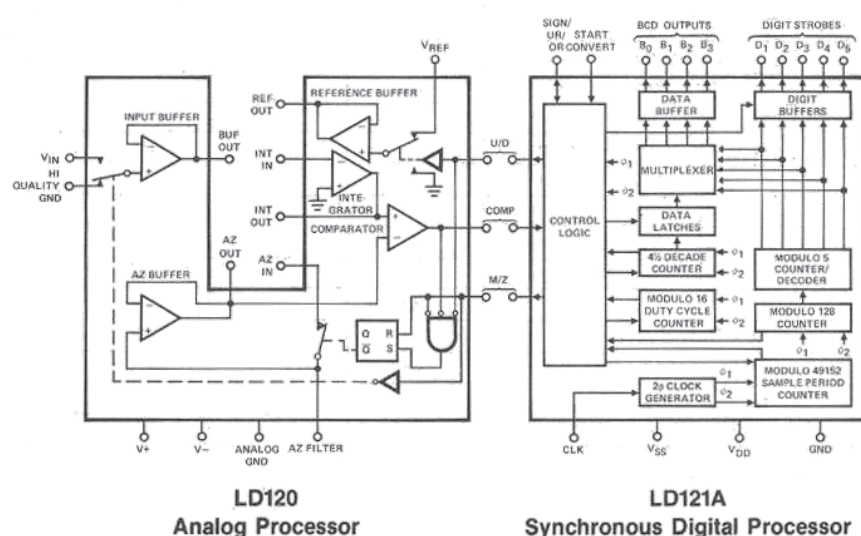
The LD120 analog processor is fabricated with a unique PMOS/Bipolar process. It contains all the necessary amplifiers, MOSFET switches, and switch driver circuits for the system. The reference voltage input is fully buffered in

LD120 to eliminate the reference switch resistance as a source of error. All the amplifiers are internally compensated. The LD120 directly interfaces the LD121A digital processor with no additional active components required.

The LD121A synchronous processor contains all the digital circuitry for the quantized feedback system. Device outputs supply two overrange signals, underrange, sign and 4½ digits of multiplexed BCD data. (All outputs are TTL compatible). Overrange is also indicated by blinking digit strobes above 20,000 counts. An input is provided to inhibit this feature at user option. Microprocessor controlled operation is simplified by a start conversion input that allows conversion-on-command.

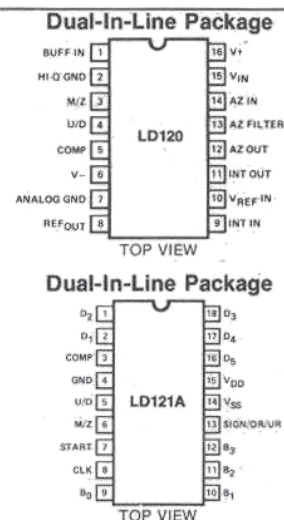
Both devices are supplied in space saving 300 mil dual-in-line plastic packages. The LD120 has 16 pins and the LD121A has 18 pins.

### FUNCTIONAL BLOCK DIAGRAM



Switch States are for a Logic "0" at U/D and M/Z Inputs.

### PIN CONFIGURATION



Order Numbers:  
LD120CJ  
See Package 8  
LD121ACJ  
See Package 19

## ABSOLUTE MAXIMUM RATINGS

$V_{IN}$  (Pin 15, 2 LD120) .....  $V^- < V_{IN} < V^+$   
 $I_{INPUT}$  (LD120) .....  $\pm 1$  mA  
 $V^+ - V^-$  (LD120) ..... 32 V  
 $V_{SS} - V_{DD}$  (LD121A) ..... 20 V  
 Any Pin (LD121A) .....  $V_{DD}$  to  $V_{SS} \pm 0.3$   
 $V_{REF}$  .....  $V^+$

Operating Temperature ..... 0 to 70°C  
 Storage Temperature ..... -65 to 125°C  
 Power Dissipation (Package)\* ..... 750 mW  
 \*Device mounted with all leads welded or soldered to PC Board. Derated 6.3 mW/°C above 25°C

ELECTRICAL CHARACTERISTICS<sup>1</sup> $T_A = 25^\circ\text{C}$ 

	PARAMETER	SYMBOL	TEST CONDITIONS UNLESS OTHERWISE NOTED: V+ = 12 V, V- = VDD = -12 V, VSS = 5 V		LIMITS			UNIT		
					MIN <sup>2</sup>	TYP <sup>3</sup>	MAX			
SYSTEM <sup>4</sup>	Linearity		fCLK = 163.84 kHz VREF = 6.8 V	2 V Scale	-1	±1/4	1	Count		
	Noise <sup>5</sup>	200 mV Scale		-2	±1/2	2				
		2 V Scale			1/3	1				
		200 mV Scale			1/2	2				
	Normal Mode Rejection Ratio	NMRR		fL = 50 or 60 Hz		40		dB		
	Power Supply Rejection Ratio	PSRR			80					
	Gain T.C.					5	15	ppm/°C		
	Zero Drift		CSTRG = 1 μF, Rin ≤ 100 kΩ		1	5	Count			
LD120 LINEAR	Analog Input Voltage	VANALOG			-5		5	V		
	Output Source Current	ISOURCE	Vin = 2 V, Buff Out = 0 V			-100	-50	μA		
	Output Sink Current	ISINK	Vin = -2 V, Buff Out = 0 V		400	800				
	Input Current	IIN	Vin = ±2.8 V			2	pA			
	Common Mode Rejection Ratio	CMRR				-72		dB		
	Input Current/Input Voltage High	IIH	M/Z, U/D Inputs	Vin = 2.0 V			20	μA		
	Input Current/Input Voltage Low	IIL		Vin = 0.8 V	-100					
	Output Source Current	ISOURCE				-100		μA		
	Output Sink Current	ISINK				800				
	Offset Voltage	VOFFSET	VOUT = 0 V		-50		50	mV		
LD121A DIGITAL	Switch Resistance (on) <sup>9</sup>		VSTRG = -4 V, IDS = 30 μA			6	20	kΩ		
	Reference Buffer Source Current	ISOURCE	Vin (U/D IN) = 0.8 V, VO = 0 V			-800	-400	μA		
	Reference Buffer Sink Current	ISINK	Vin (U/D IN) = 2.0 V, VO = 2 V			100				
	Integrator Source Current <sup>10</sup>	ISOURCE	Vin (Int. IN) = -100 mV, VO = 0 V			-100	-50			
	Integrator Sink Current <sup>10</sup>	ISINK	Vin (Int. IN) = 100 mV, VO = 0 V		400	800				
	Output Swing				-10		10	V		
	COMP	Comparator Output Voltage	VOUT	RL = 10 k to 5 V AZ FILTER IN = 100 mV INTEGRATOR OUT = 0 V		-5			mV	
		Comparator Offset Voltage	VOFFSET			-5		5		
	SUPPLY	Positive Supply Voltage	V+			9	12	15	V	
		Negative Supply Voltage	V-			-15	-12	-9		
Positive Supply Current		I+						3.5	mA	
Negative Supply Current		I-				-3.5				
INPUTS	Input Voltage High	VINH	Comparator Input, Sign/OR/OR/ Blink <sup>6</sup> , Start, CLK IN		4			V		
	Input Voltage Low	VINL							0.5	
	Input Current/Input Voltage High	IINH	Vin = 5 V (Sign/OR/OR <sup>6</sup> )				170	300	μA	
	Input Current/Input Voltage Low	IINL	Vin = 0 V (Start Convert, Clock)		-400	-150				
OUTPUTS	Output Voltage High	VOH	Bit Lines, Sign/OR/OR, Digit Strobes	I <sub>OH</sub> = -40 μA	2.4			V		
	Output Voltage Low	VOL		I <sub>OL</sub> = 1.6 mA			0.6			
	Output Voltage High	VOH	M/Z	I <sub>OH</sub> = -150 μA	4					
	Output Voltage Low	VOL		I <sub>OL</sub> = 0.8 mA			0.6			
	Output Voltage High	VOH	U/D	I <sub>OH</sub> = -0.5 mA	4					
	Output Voltage Low	VOL		I <sub>OL</sub> = 0.8 mA			0.6			
DYNAMIC	Start Convert <sup>7</sup>	tp			20			μs		
	Clock Frequency	fCLK	50% Duty Cycle		50		250	kHz		
	Rep Rate (Strobes)		fCLK ~640		78		470	Hz		
SUPPLY	Positive Supply Voltage	VSS	Range Over which Functionality is Guaranteed		4.5	5	5.5	V		
	Negative Supply Voltage	VDD			-13.2	-12	-10.8			
	Positive Supply Current <sup>8</sup>	ISS				14	25	mA		
	Negative Supply Current	IDD			-25	-14				

## NOTES

(See next page)



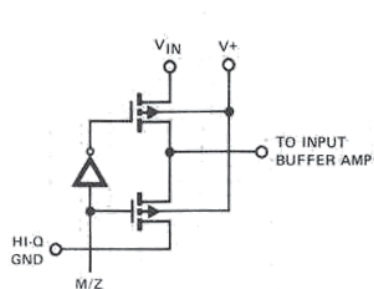
ELECTRICAL CHARACTERISTICS<sup>1</sup> (Cont.)

PARAMETER	SYMBOL	TEST CONDITIONS UNLESS OTHERWISE NOTED: $V_+ = 12\text{ V}$ , $V_- = V_{DD} = -12\text{ V}$ , $V_{SS} = 5\text{ V}$	LIMITS			UNIT
			MIN <sup>2</sup>	TYP <sup>3</sup>	MAX <sup>4</sup>	
Zero Drift <sup>4</sup>		$f_{CLK} = 163.84\text{ kHz}$ , $V_{REF} = 6.8\text{ V}$ $C_{STRG} = 1\text{ }\mu\text{F}$ , $R_{in} \leq 100\text{ k}\Omega$			5	Count

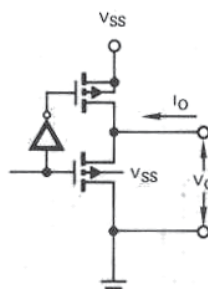
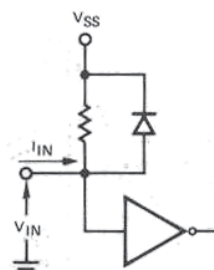
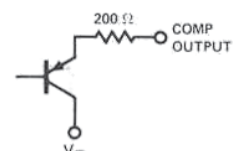
## NOTES:

1. Refer to PROCESS OPTION FLOWCHART for additional information.
2. The algebraic convention whereby the most negative value is a minimum, and the most positive value is a maximum, is used in this data sheet.
3. Typical values are for DESIGN AID ONLY, not guaranteed nor subject to production testing.
4. System parameters not directly tested.
5. Bit width over which reading is stable 95% of the time.
6. Pin characteristic only during  $D_4$  strobe time.
7. Minimum positive going pulse width to initiate a conversion.
8. All outputs disconnected.
9.  $V_{STRG}$  must be more positive than  $-4\text{ V}$ .
10. Reference source impedance must be less than  $10\text{ k}\Omega$ .

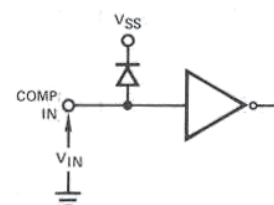
## INPUT/OUTPUT SCHEMATICS



LD120 Input

LD121A Output Buffers  
(Digits, Bits, Sign, M/Z U/D)LD121A Clock Input  
Start Convert

LD120 Comparator Output



LD121A Comparator Input

**Timing:** The external oscillator is divided to generate a 2- $\phi$  clock on the synchronous digital chip. A time base generator divides the clock frequency into sampling intervals of 49,152 pulses of which 16,384 pulses are the Auto-Zero interval and 32,768 pulses are the measure interval.

**Auto-Zero Interval:** The connection diagram in Figure 1 illustrates the system during the Auto-Zero interval. The input buffer is switched to reference ground and supplies a current equal to its offset voltage divided by  $R_2$  to the integrator summing mode. The U/D buffer is toggled by the digital processor between  $V_{REF}$  and ground with a 50% duty cycle. This results in a current flow equal to  $V_{REF}/R_1$  to the summing node half of the time. The AZ capacitor,  $C_{STRG}$ , assumes a voltage,  $V_{STRG}$ , that is equal to the average value of integrator output. The AZ buffer supplies a current to the summing node equal to the  $V_{STRG}$  voltage divided by  $R_3$ .

The system will reach an equilibrium when the sum of the DC currents into the summing node equal zero. At this time, the current through  $R_3$  equals  $-\frac{1}{2} V_{REF}/R_1$  plus the small currents necessary to cancel the offset of the input buffer and integrator input bias current. Capacitor

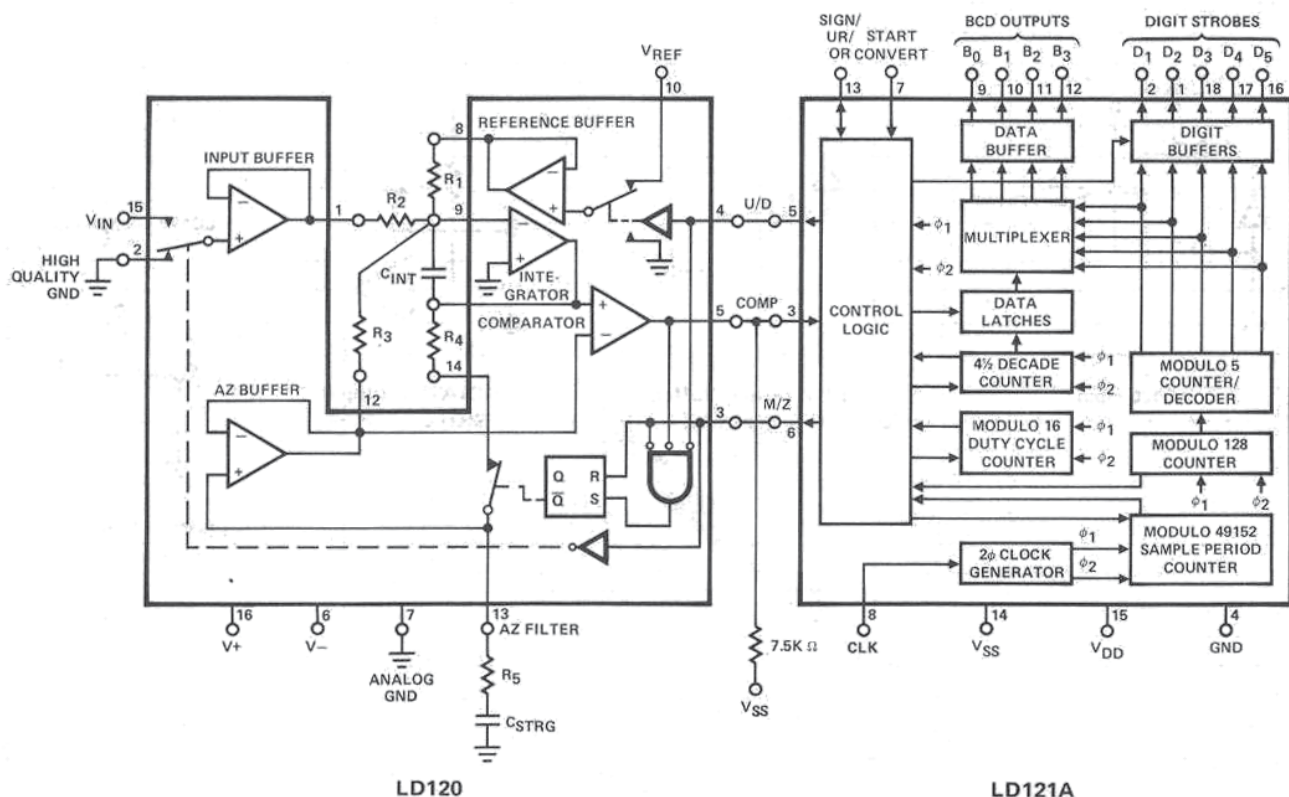
CSTRG "stores" VSTRG when the AZ switch opens at the end of the Auto-Zero interval. The digital BCD counter is inactive during Auto-Zero. It is reset to zero during the last clock pulse of the Auto-Zero interval.

### THE U/D CONTROL DURING THE MEASURE INTERVAL

The U/D buffer is switched to  $V_{REF}$  when the U/D control is low. In this state the currents through  $R_1$  and  $R_3$  sum to  $\frac{1}{2} V_{REF}/R_1$ . A high level on the U/D control connects the U/D buffer to ground. During this state the sum of the currents through  $R_1$  and  $R_3$  sum to  $-\frac{1}{2} V_{REF}/R_1$ . In one clock cycle, a charge equal to  $V_{REF}/2R_1f_{IN}$  coulombs is either added or subtracted to the integrator capacitor. The BCD counter is decremented for each addition of this quantized charge and incremented for each subtraction of quantized charge.

## THE MEASURE ALGORITHM

The input is connected to  $V_{IN}$  during the measure interval and supplies a current to the integrator equal to  $V_{IN}/R_2$ .



**Connection Diagram**  
**Figure 1**

## FUNCTIONAL SYSTEM OPERATION (Cont.)

This causes the integrator output to move away from  $V_{STRG}$ . The digital processor attempts to keep the integrator output near  $V_{STRG}$  by adding or subtracting quantized charge to  $C_{INT}$ . The net amount of charge required to accomplish this is totaled by the BCD counter. The BCD count at the end of conversion equals the number of charge parcels necessary to cancel the input current supplied through  $R_2$ . The resulting count is proportional to the voltage at  $V_{IN}$ .

## U/D DUTY CYCLE CONTROL DURING THE MEASURE INTERVAL

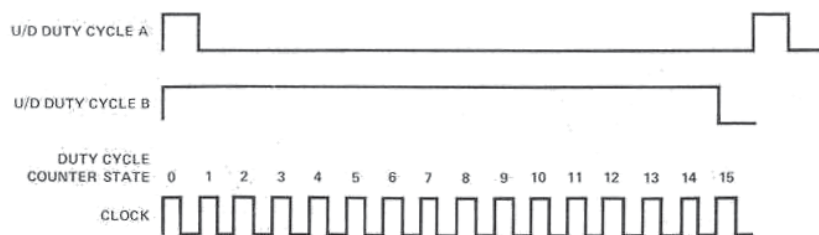
The digital processor contains a modulo 16 duty cycle counter that provides the U/D control output. This counter examines the state of the comparator once each 16 clock cycles during state 15. If the comparator is high, the U/D control will be high for one cycle and low for 15 cycles in the next 16 clock cycle period of the duty cycle counter. If the comparator output is low, the U/D control will be high for 15 cycles and low for one cycle in the next period of the duty cycle counter. Figure 2 illustrates these waveforms. The effect of these two duty cycles is to source or sink a net 14 charge parcels to  $C_{INT}$ , thus driving the

integrator output toward  $V_{STRG}$  and accumulating counts in the BCD counter in groups of 14 counts. This dual duty cycle control technique results in a fixed number of U/D control transitions, regardless of the value of  $V_{IN}$ ; therefore, these transitions cannot cause linearity error. The first few periods of the measure interval are illustrated in Figure 3 for a negative  $V_{IN}$ .

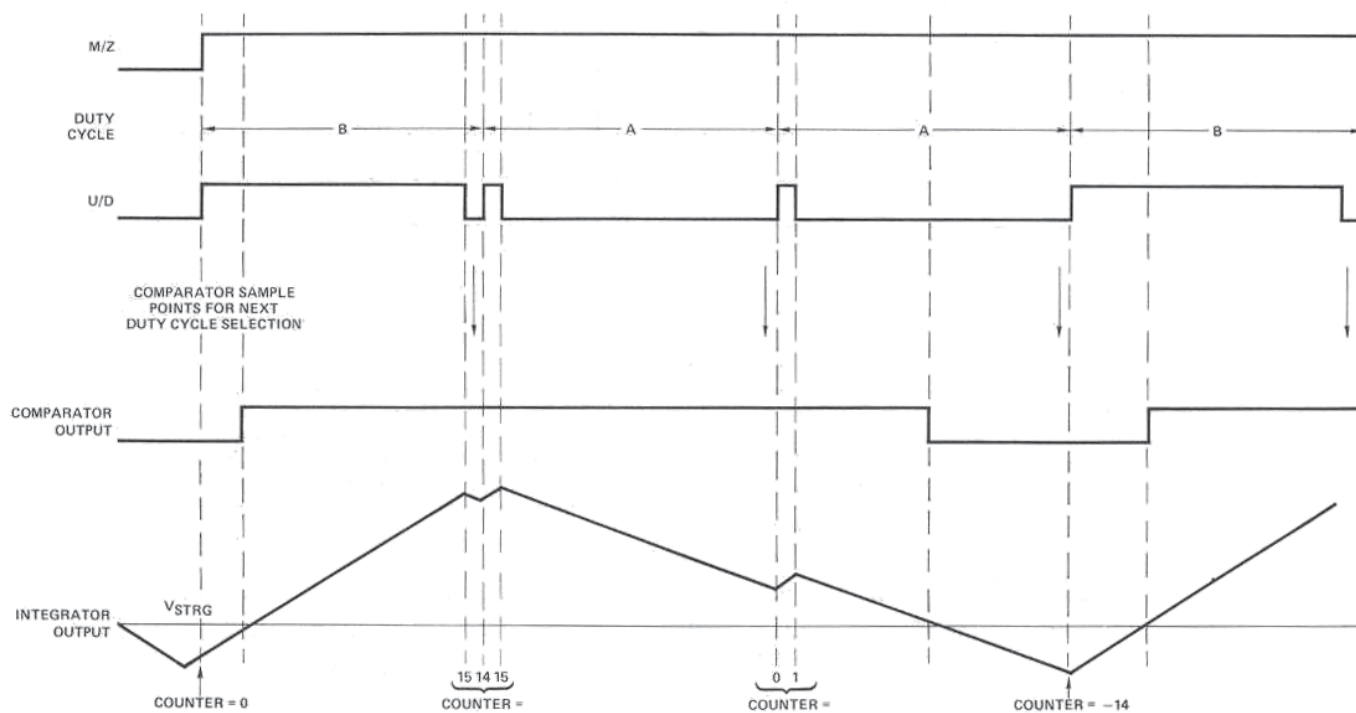
## AUTO-ZERO OVERRIDE AT THE END OF MEASURE

The BCD counter contents equal a multiple of 14 counts at the end of the measure interval. A residual voltage on  $C_{INT}$  represents the remaining unresolved portion of the input voltage. This voltage is cancelled and the corresponding counts accumulated during a brief override period at the start of the AZ interval. Normal AZ interval action is inhibited until this residual count is resolved.

The override period starts at the end of the Measure Interval. The input buffer is switched to reference ground as no additional charge is desired from  $V_{IN}$ . The U/D control is set high. After the comparator goes high, the U/D control is switched low at the next state 8 of the duty cycle counter. The next transition of the comparator ends the



Modulo 16 Dual Duty Cycle Counter Waveforms  
Figure 2



Measure Interval Timing ( $V_{IN} \approx -1\text{ V}$ )

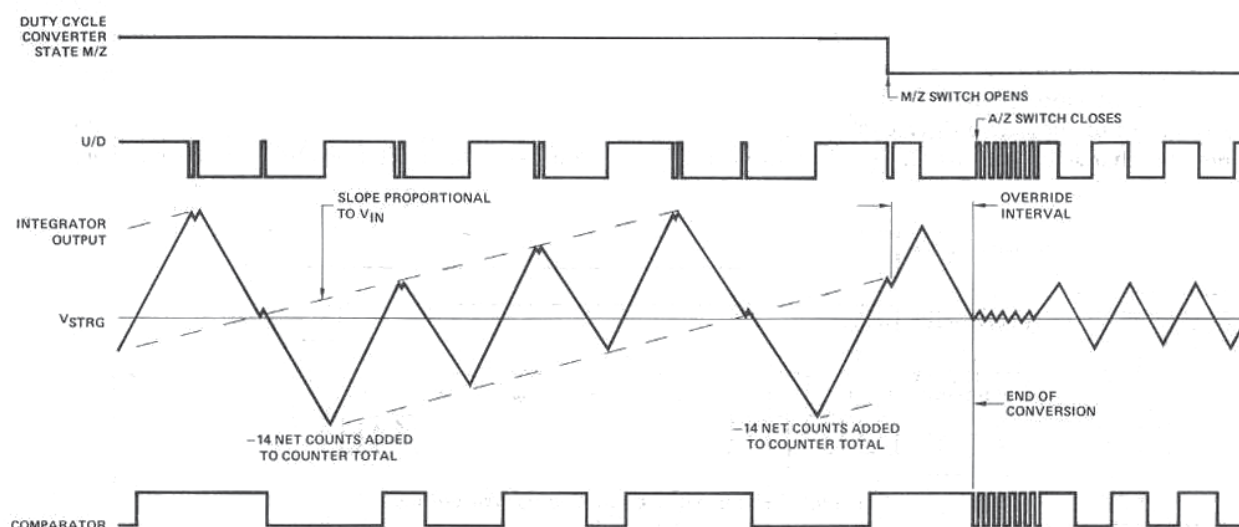
Figure 3



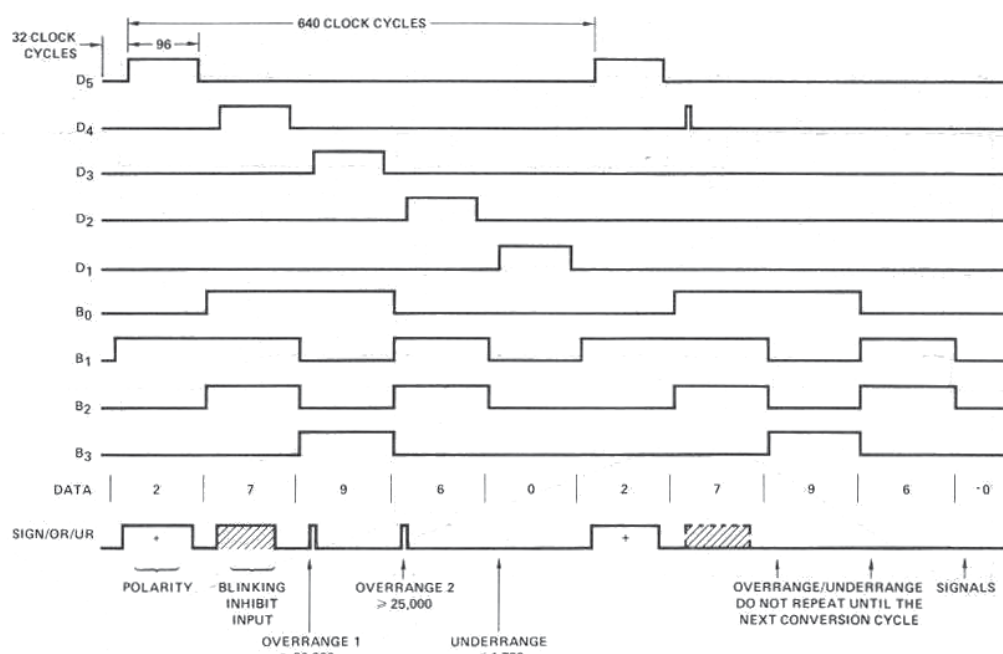
conversion and the BCD counter is synchronously inhibited. The output latches are updated on the next clock pulse with the sign and contents of the BCD counter. The override period ends (end of conversion) and normal AZ action is initiated by the closing of the AZ switch. The duty cycle counter now drives the U/D control high during states 0 through 7 and low during states 8 through 15 for the required AZ interval 50% duty cycle.

Figure 4 illustrates the events at the end of the measure interval. The slope of the dotted lines is proportional to the unknown current through  $R_2$ .

The self oscillation following the override period keeps  $V_{INT}$  near  $V_{STRG}$  until sync is achieved with the duty cycle counter. This feature eliminates large transients on  $C_{STRG}$  and results in highly stable Auto-Zero loop characteristics.



Algorithm Waveforms at the End of the Measure Period  
Figure 4



LD121 Digital Output Timing Diagram  
Figure 5

## DIGITAL INTERFACE FUNCTIONAL DESCRIPTION

**BCD Outputs— (Pins 9, 10, 11 and 12):** The output latch contents are time multiplexed in a digit serial, bit parallel fashion through 4 push-pull TTL compatible output buffers. A high level (sourcing current from  $V_{SS}$ ) indicates a one and a low level (sinking current to ground) indicates a zero.  $B_0$  is the least significant Bit. Figure 5 illustrates the timing relationship. All BCD outputs are valid during digit strobe time.

**Digit Strokes—(Pins 1, 2, 16, 17 and 18):** Figure 5 indicates the operation of these outputs. The strobes are TTL compatible. Only one strobe is high at one time. The strobe period is equal to 640 clock cycles with a 15% duty cycle. An inter-digit blanking period of 32 clock cycles permits easy interface with gas discharge displays. The strobe sequence is  $D_5$  (MSD),  $D_4$ ,  $D_3$ ,  $D_2$ ,  $D_1$  (LSD).

## FUNCTIONAL SYSTEM OPERATION (Cont.)

**Clock Input (Pin 8):** Pin 8 requires an external clock input. The system operates from the positive clock transition allowing a 30 to 70% duty cycle in the external oscillator waveform. To maintain the linearity specifications of the A/D converter set the short term stability of this oscillator should be better than 1 part in  $2 \times 10^4$ .

**Sign/Overrange/Underrange (Pin 13):** This pin operates as a TTL compatible output during D<sub>1</sub>, D<sub>2</sub>, D<sub>3</sub> and D<sub>5</sub> strobe times and as an input during D<sub>4</sub> strobe time. Figure 5 indicates the timing relationship. Information is presented to this output as follows:

- At D<sub>5</sub> Time — Polarity is indicated by a high level for positive and a low level for negative. It is valid approximately 0.25  $\mu$ sec after D<sub>5</sub> goes high until the end of each D<sub>5</sub> strobe.
- At D<sub>4</sub> Time — The output buffer assumes a high impedance state. An input latch samples the voltage level imposed on this pin during D<sub>4</sub> time. A high level will inhibit the overrange blinking (digit strobes are suppressed during zero interval). An internal pull down resistor will hold the pin voltage low if the pin is unconnected or the load is high impedance. An alternative method for selecting overrange blinking is the choice of output buffer. A TTL buffer connected to pin 13 provides a pullup inhibiting overrange blinking. A NPN buffer driver provides a pulldown yielding normal

overrange blinking.

- At D<sub>3</sub> Time — If the count is equal to or greater than 20,000, a single positive going pulse will occur at the beginning of the first D<sub>3</sub> time after the end of conversion cycle. The pulse width equals one clock cycle. The overrange blinking is momentarily inhibited when overrange pulses are present to prevent the display blinking feature from interfering with the decoding of the overrange output.
- At D<sub>2</sub> Strobe—Time — A second overrange pulse occurs at the beginning of the first D<sub>2</sub> time, after the end of conversion, if the count is equal or exceeds 25,000 counts.
- At D<sub>1</sub> Strobe—Time — A single pulse occurs at the beginning of the first D<sub>1</sub> time after the end of conversion, if the count is less than 1800 counts.

All overrange and underrange signals are one clock pulse wide. They occur only once per measure/zero cycle.

**Start Conversion (Pin 7):** A low level on this TTL compatible input holds the system in the zero mode continuously. A positive going pulse at least one clock time wide initiates one conversion cycle within 16 clock cycles after system has completed minimum auto zero cycle. The digital data is valid after 32,850 clock cycles. A static high level on this input provides normal cyclical operation. An internal pull up resistor allows this input to remain unconnected when conversion control is not desired.

## APPLICATIONS

- The recommended supply voltages are:

$$\begin{array}{ll} V_+ = 12 \text{ V} \pm 10\% & V_{SS} = 5 \text{ V} \pm 10\% \\ V_{DD}, V_- = -12 \text{ V} \pm 10\% & V_{REF} = 2 \text{ V to } 10 \text{ V} \end{array}$$

- The reading is essentially the proportionality of  $V_{IN}$  compared to  $V_{REF}$  as shown in the gain equation:

$$\frac{\text{READOUT}}{\text{COUNT}} = (V_{IN} - V_{HI-Q \text{ GND}}) \cdot \frac{R_1}{R_2} \cdot \frac{65,536}{V_{REF}}$$

$R_1$  is independent of the U/D switch resistance due to the incorporation of the U/D buffer amplifier in the LD120. Gain can be calibrated either by varying  $V_{REF}$  or trimming the resistance of  $R_1$  to obtain the correct full scale reading.

- The output of the integrator should always be more positive than  $-9 \text{ V}$  (for  $V_{DD} = -12 \text{ V}$ ) to obtain specified accuracy:

$$V_O (\text{min}) > -9 \text{ V}$$

$$V_O (\text{min}) = -\frac{V_{REF} R_3}{2R_1} - \frac{15}{f_{CLK} C_{INT}} \left[ \frac{V_{REF}}{2R_1} + \frac{V_{IN} (\text{max})}{R_2} \right]$$

Change value of  $C_{INT}$  to set  $V_{INT}(\text{P-P})$ .

Large integrator swing provides the best performance.  $V_{INT}(\text{P-P}) = 6 \text{ to } 8 \text{ volts}$  is recommended.

$$V_{INT}(\text{P-P}) = \frac{30}{f_{CLK} C_{INT}} \left[ \frac{V_{REF}}{2R_1} + \frac{V_{IN} (\text{max})}{R_2} \right]$$



## APPLICATIONS (Cont.)

4. Although any oscillator frequency from 50 kHz to 250 kHz can be used, frequencies that provide integer number of line frequency cycles per measure period provide maximum line noise rejection. These frequencies are:

$$f_{CLK} = \frac{32,768 F_{LINE}}{n}, n = 8, 9, 10, \dots 40$$

$f_{CLK} = 163,840$  is popular since it provides both 50 and 60 Hz rejection.

5. The sampling rate =  $f_{CLK}/49,152$  cycles/sample.
6. After a start conversion pulse, data is valid 32,850 clock pulses later and remains valid until at least 32,768 clock pulses after the next start pulse. During continuous cycle operation, data is assured valid when M/Z is high or 100 clock cycles after the one/zero transition of M/Z.
7. Any capacitive coupling between U/D and Comp. is detrimental to proper algorithm operation. PC board layouts should not allow these traces to be adjacent.
8. All power supplies should be capacitively bypassed to ground for maximum count stability.
9.  $C_{INT}$  and  $C_{STRG}$  should be selected for low leakage. Silvered mica is recommended for  $C_{INT}$  and mylar for  $C_{STRG}$ . Polypropylene capacitors also work well for both  $C_{STRG}$  and  $C_{INT}$ .
10. For a given leakage into  $C_{STRG}$  of  $I_{STRG}$ :

$$\Delta V_{STRG} = \frac{\Delta t I_{AZ}}{C_{STRG}}$$

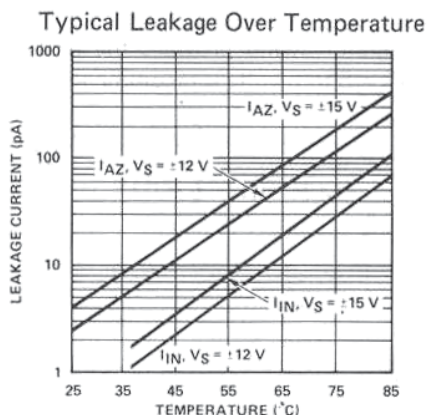
$$\text{where } \Delta t = \text{a measure interval} = \frac{2}{3} \times \frac{1}{F_{SAMPLE}}$$

$\Delta V_{STRG}$  will inject a  $\Delta I$  integrator of  $\Delta V_{STRG}/R_3$

Now a  $\Delta I$  integrator would have been equivalent to a  $\Delta V_{IN}/R_2$

So the equivalent input drift is

$$\Delta V_{IN} = \frac{1}{2} \times \frac{R_2}{R_3} \times \frac{2}{3} \times \frac{I_{STRG}}{F_{SAMPLE} \cdot C_{STRG}}$$



the  $\frac{1}{2}$  factor is provided by integrator action.

Example: We wish to see 1 count (0.1 mV of  $\Delta V_{IN}$  on the 2 V range) of drift for the circuit of Figure 7 with  $I_{STRG} = 100$  pA @ 70°C. What  $C_{STRG}$  is needed?

Answer:

$$C_{STRG} = \frac{R_2}{R_3} \times \frac{1}{3} \times \frac{I_{STRG}}{F_{SAMPLE} \cdot \Delta V_{IN}} =$$

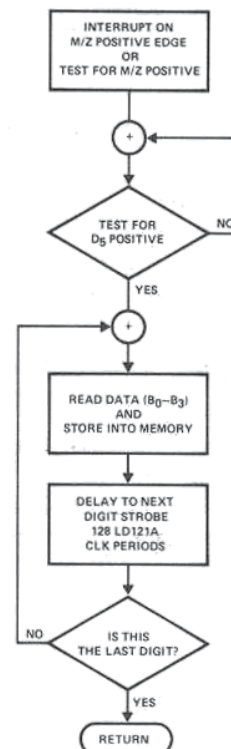
$$\frac{100K \Omega}{62K \Omega} \times \frac{1}{3} \times \frac{10^{-10} F}{3 \text{ Hz} \times 10^{-4} V}$$

$$= 0.18 \mu F \text{ Minimum}$$

11. Interfacing the LD120/LD121A to Microprocessors: A description of interfacing the LD120/LD121A to the 8080  $\mu P$  is given in AN77-3. Some of the timing details warrant description here.

The end-of-conversion is determined by gating  $\overline{M/Z} \cdot \overline{U/D} \cdot \overline{COMP}$ . At this time, all BCD latches are updated with the contents of the latest conversion.

We recommend using the negative edge of M/Z to interrupt the processor. Next, test for a high  $D_5$  digit strobe (MSD). Once  $D_5$  is high load the BCD data from  $B_0-B_3$  lines and the polarity information from the SIGN/OR/UR line. Next delay 128 LD121A clock times (this assures that the  $D_4$  data is valid) then load  $B_0-B_3$  lines containing the  $D_4$  data. Next delay another 128 LD121A clock times (this assures that the  $D_3$  data is valid) then load  $B_0-B_3$  lines containing the  $D_3$  data. Repeat this process for  $D_2$  and finally the  $D_1$  (LSD) data load. In flowchart form (see Figure 6).

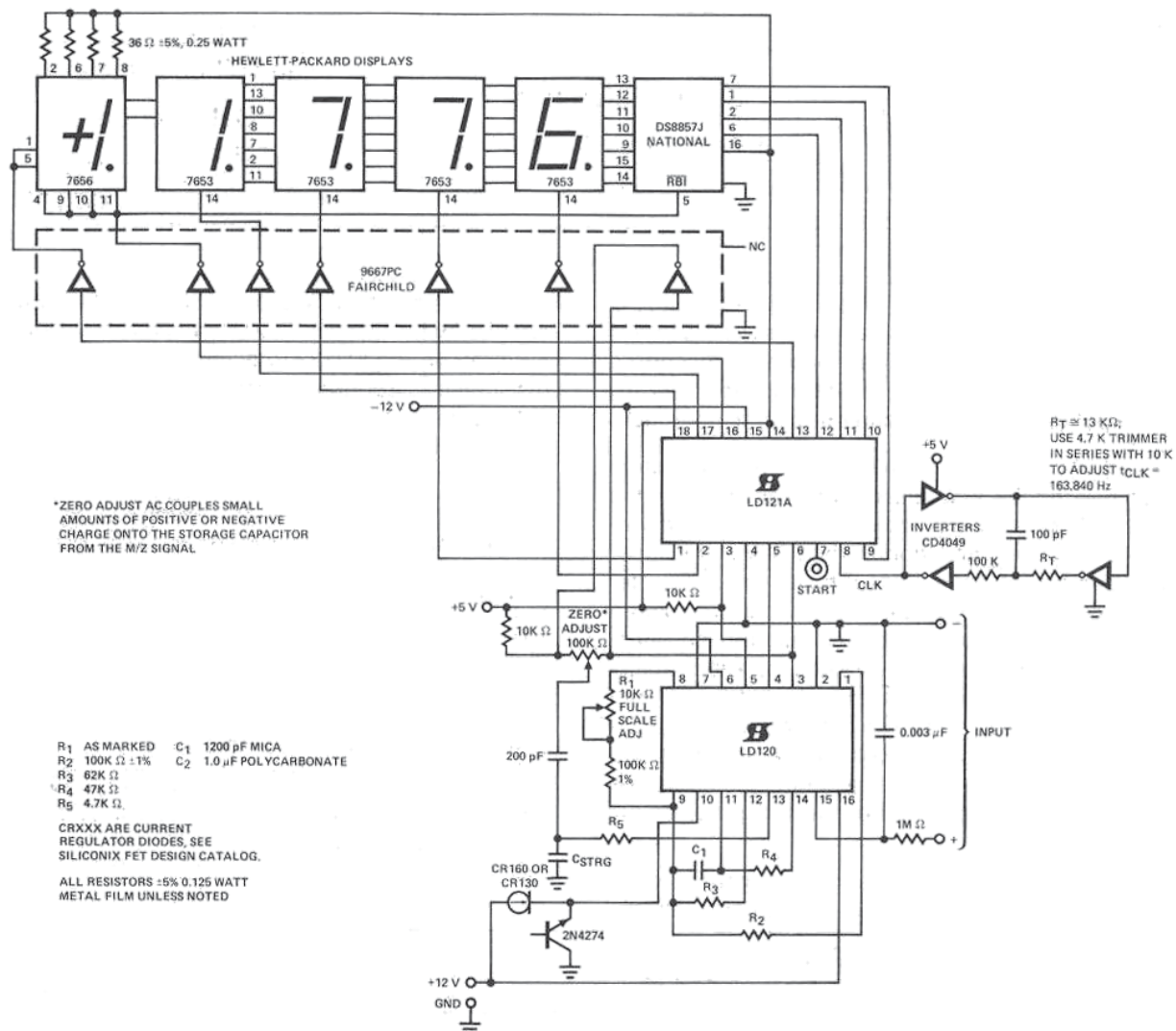


Flow Chart for 8080 Interface  
Figure 6



## CIRCUIT BENEFITS

- Overrange Blinking
- $0 \rightarrow \pm 1.9999$  Input Voltages
- Zero Adjust to Null Offset Introduced by PC Board Leakages and Comparator



4 1/2 Digit DVM  
Figure 7





# 4 1/2-Digit A/D Converter Set

## FEATURES

- 0.005%  $\pm 1$  Count Accuracy
- $\pm 200.0$  mV and  $\pm 2.000$  V Ranges
- Auto-zero
- Auto-polarity
- Over and Under Range Outputs

## BENEFITS

- High System Performance
- Single Resistor Programming
- Nulls Out Offsets
- Single Reference
- Easily Interfaced

## APPLICATIONS

- High Accuracy Digital Voltmeters and Panel Meters
- Digital Scales and Thermometers
- $\mu$ P Data Acquisition Systems
- Scientific Instrumentation

## DESCRIPTION

The LD120 and LD121A form a precision 4 1/2 digit A/D converter system for use in display and microprocessor based data acquisition applications. Based on Siliconix's "Quantized Feedback" technique, intrinsic features include auto-polarity, auto-zero, and ratiometric operation. Except for a stable reference, no critical components are required to achieve rated performance. The technique used offers superior linearity, normal mode rejection, and stability due to the simultaneous integration of the unknown input and the reference voltages. Unlike other conversion techniques, the integrator output voltage never represents more than 100 counts. Thus, critical, high resolution performance is not required of either the integrator or the comparator.

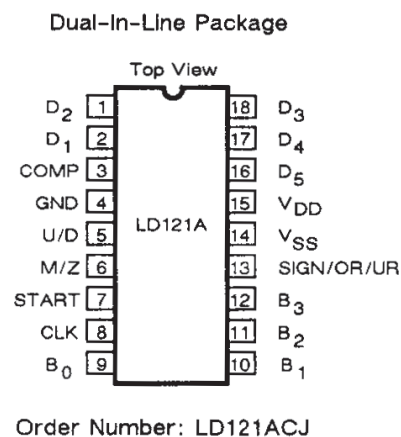
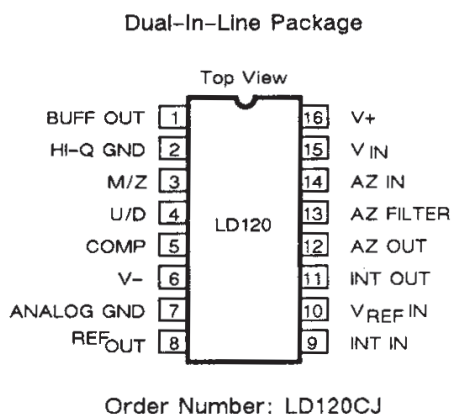
The LD120 analog processor is fabricated with a unique PMOS/Bipolar process. It contains all the necessary amplifiers, MOSFET switches, and switch driver circuits for the system. The reference voltage input is fully buffered in the LD120 to

eliminate the reference switch resistance as a source of error. All the amplifiers are internally compensated. The LD120 directly interfaces to the LD121A digital processor with no additional active components required.

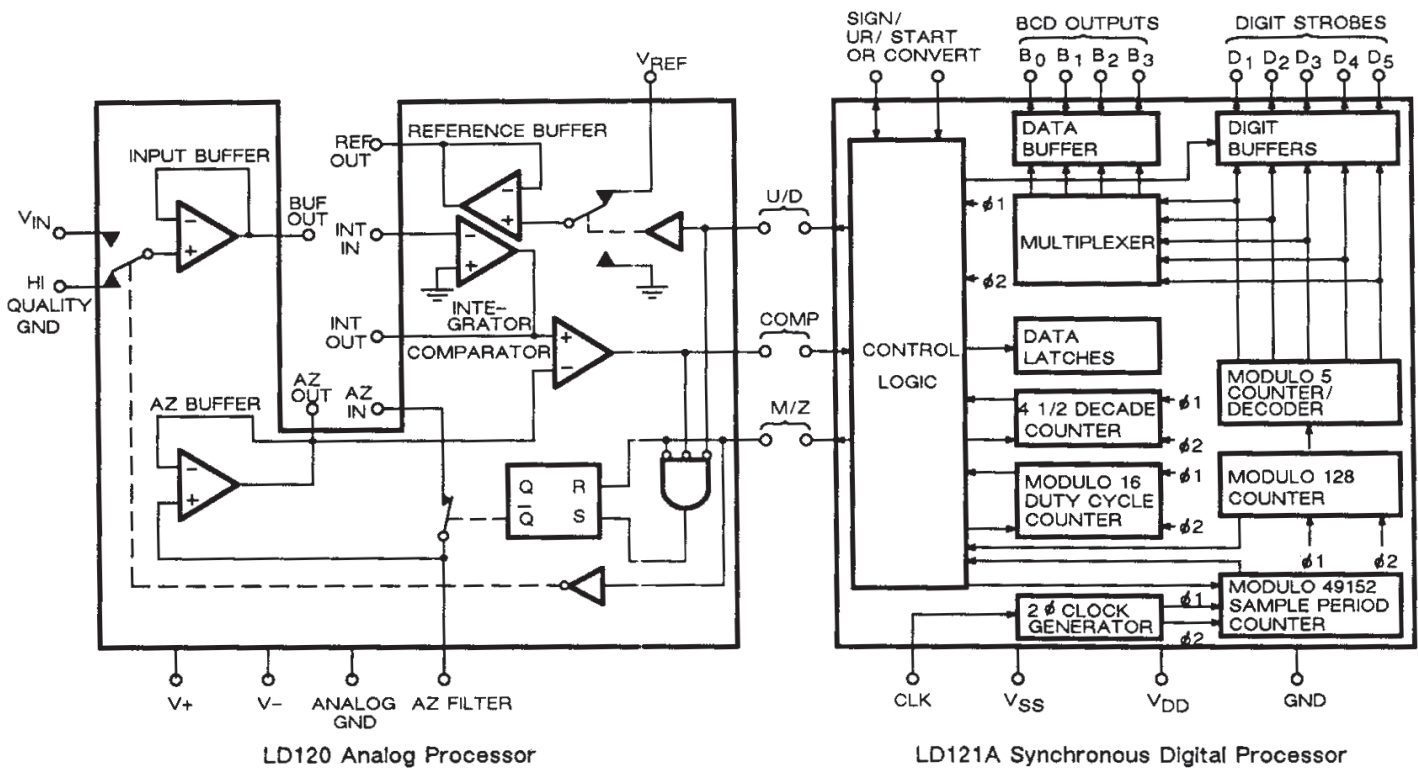
The LD121A synchronous processor contains all the digital circuitry for the quantized feedback system. Device outputs supply two overrange signals, underrange, sign and 4-1/2 digits of multiplexed BCD data. (All outputs are TTL compatible.) Overage is also indicated by blinking digit strobes above 20,000 counts. An input is provided to inhibit this feature at user option. Microprocessor controlled operation is simplified by a start conversion input that allows conversion-on-command.

Both devices are supplied in space saving 300 mil dual-in-line plastic packages for operation in the commercial, C suffix (0 to 70°C) temperature range.

## PIN CONFIGURATION



**FUNCTIONAL BLOCK DIAGRAM**



SWITCH STATES ARE FOR A LOGIC "0" AT U/D AND M/Z INPUTS.

**ABSOLUTE MAXIMUM RATINGS**

$V_{IN}$ (Pin 15, 2 LD120)	$V_- < V_{IN} < V_+$
$I_{INPUT}$ (LD120)	$\pm 1$ mA
$V_+ - V_-$ (LD120)	32 V
$V_{SS} - V_{DD}$ (LD121A)	20 V
Any Pin (LD121A)	$V_{DD}$ to $V_{SS} \pm 0.3$ V

$V_{REF}$	$V_+$
Operating Temperature	0 to 70°C
Storage Temperature	-65 to 125°C
Power Dissipation (Package)*	750 mW
* Device mounted with all leads welded or soldered to PC Board. Derated 6.3 mW/°C above 25°C.	



ELECTRICAL CHARACTERISTICS <sup>a</sup>									
PARAMETER	SYMBOL	Test Conditions Unless Otherwise Specified: V <sub>+</sub> = 12 V V <sub>-</sub> = V <sub>DD</sub> = -12 V V <sub>SS</sub> = 5 V	LIMITS					UNIT	
			1=25°C		C SUFFIX				
			TEMP	TYP <sup>d</sup>	MIN <sup>b</sup>	MAX <sup>b</sup>			
SYSTEM <sup>e</sup>									
Linearity		f <sub>CLOCK</sub> = 163.84 kHz V <sub>REF</sub> = 6.8 V	2 V Scale	1	± ¼	-1	1	Count	
			200 mV Scale	1	± ½	-2	2		
Noise <sup>f</sup>			2 V Scale	1	⅓		1		
			200 mV Scale	1	½		2		
Normal Mode Rejection Ratio	NMRR		f <sub>L</sub> = 50 Hz or 60 Hz	1	40			dB	
Power Supply Rejection Ratio	PSRR			1	80				
Gain T.C.				1	5		15	ppm/°C	
Zero Drift			C <sub>STRG</sub> = 1 μF R <sub>IN</sub> ≤ 100 kΩ	1	1		5	Count	

ELECTRICAL CHARACTERISTICS <sup>a</sup>					LD120 (LINEAR CIRCUIT)			
PARAMETER	SYMBOL	Test Conditions Unless Otherwise Specified: V <sub>+</sub> = 12 V V <sub>-</sub> = V <sub>DD</sub> = -12 V V <sub>SS</sub> = 5 V		LIMITS				UNIT
				1=25°C		C SUFFIX		
						MIN <sup>b</sup>	MAX <sup>b</sup>	
TEMP	TYP <sup>d</sup>							
INPUT BUFFER								
Analog Input Voltage	V <sub>ANALOG</sub>			1		-5	5	V
Output Source Current	I <sub>SOURCE</sub>	V <sub>IN</sub> = 2 V, Buff Out = 0 V		1	-100		-50	μA
Output Sink Current	I <sub>SINK</sub>	V <sub>IN</sub> = -2 V, Buff Out = 0 V		1	800	400		
Input Current	I <sub>IN</sub>	V <sub>IN</sub> = ±2.8 V		1	2			pA
Common-Mode Rejection Ratio	CMRR			1	-72			dB
Input Current/ Input Voltage HIGH	I <sub>IH</sub>	M/Z, U/D Inputs	V <sub>IN</sub> = 2.0 V	1			20	μA
Input Current/ Input Voltage LOW	I <sub>IL</sub>		V <sub>IN</sub> = 0.8 V	1		-100		

ELECTRICAL CHARACTERISTICS <sup>a</sup>			LD120 (LINEAR CIRCUIT) (Cont'd)				
PARAMETER	SYMBOL	Test Conditions Unless Otherwise Specified: V <sub>+</sub> = 12 V V <sub>-</sub> = V <sub>DD</sub> = -12 V V <sub>SS</sub> = 5 V	LIMITS				UNIT
			1=25°C		C SUFFIX		
					MIN <sup>b</sup>	MAX <sup>b</sup>	
TEMP	TYP <sup>d</sup>						
AZ BUFFER							
Output Source Current	I <sub>SOURCE</sub>		1	-100			μA
Output Sink Current	I <sub>SINK</sub>		1	800			
Offset Voltage	V <sub>OS</sub>	V <sub>OUT</sub> = 0 V	1		-50	50	mV
On Resistance <sup>g</sup>	r <sub>DS(ON)</sub>	V <sub>STRG</sub> = -4 V I <sub>DS</sub> = 30 μA	1	6		20	kΩ
REFERENCE BUFFER							
Reference Buffer Source Current	I <sub>SOURCE</sub>	V <sub>IN</sub> (U/D IN) = 0.8 V V <sub>O</sub> = 0 V	1	-800		-400	μA
Reference Buffer Sink Current	I <sub>SINK</sub>	V <sub>IN</sub> (U/D IN) = 2.0 V V <sub>O</sub> = 2 V	1	100			
INTEGRATOR							
Integrator Source Current <sup>h</sup>	I <sub>SOURCE</sub>	V <sub>IN</sub> (INT. IN) = -100 mV V <sub>O</sub> = 0 V	1	-100		-50	μA
Integrator Sink Current <sup>h</sup>	I <sub>SINK</sub>	V <sub>IN</sub> (INT. IN) = 100 mV V <sub>O</sub> = 0 V	1	800	400		
Output Swing			1		-10	10	V
COMPARATOR							
Comparator Output Swing	V <sub>OUT</sub>	R <sub>L</sub> = 10 k to 5 V AZ Filter IN = 100 mV integrator OUT = 0 V	1		-5		V
Comparator Offset Voltage	V <sub>OS</sub>		1		-5	5	mV
SUPPLY							
Positive Supply Voltage	V <sub>+</sub>		1	12	9	15	V
Negative Supply Voltage	V <sub>-</sub>		1	-12	-15	-9	
Positive Supply Current	I <sub>+</sub>		1			3.5	mA
Negative Supply Current	I <sub>-</sub>		1		-3.5		



ELECTRICAL CHARACTERISTICS <sup>a</sup>				LD121 (DIGITAL CIRCUIT)			
PARAMETER	SYMBOL	Test Conditions Unless Otherwise Specified: V <sub>+</sub> = 12 V V <sub>-</sub> = V <sub>DD</sub> = -12 V V <sub>SS</sub> = 5 V	LIMITS				UNIT
			1=25°C		C SUFFIX		
			TEMP	TYP <sup>d</sup>	MIN <sup>b</sup>	MAX <sup>b</sup>	
INPUTS							
Input Voltage HIGH	V <sub>INH</sub>	Comparator Input Sign/OR/OR/Blink <sup>l</sup> Start, CLK IN	1		4		V
Input Voltage LOW	V <sub>INL</sub>		1			0.5	
Input Current/ Input Voltage HIGH	I <sub>INH</sub>	V <sub>IN</sub> = 5 V (Sign/OR/OR <sup>l</sup> )	1	170		300	μA
Input Current/ Input Voltage LOW	I <sub>INL</sub>	V <sub>IN</sub> = 0 V (Start Convert, Clock)	1	-150	-400		
OUTPUTS							
Output Voltage HIGH	V <sub>OH</sub>	Bit Lines Sign/OR/OR Digital Strokes	I <sub>OH</sub> = -40 μA	1		2.4	V
Output Voltage LOW	V <sub>OL</sub>		I <sub>OL</sub> = 1.6 mA	1		0.6	
Output Voltage HIGH	V <sub>OH</sub>	M/Z	I <sub>OH</sub> = -150 μA	1		4	
Output Voltage LOW	V <sub>OL</sub>		I <sub>OL</sub> = 0.8 mA	1		0.6	
Output Voltage HIGH	V <sub>OH</sub>	U/D	I <sub>OH</sub> = -0.5 μA			4	
Output Voltage LOW	V <sub>OL</sub>		I <sub>OL</sub> = 0.8 mA			0.6	
DYNAMIC							
Start Convert <sup>l</sup>	t <sub>p</sub>		1		20		μs
Clock Frequency	f <sub>CLOCK</sub>	50% Duty Cycle	1		50	250	kHz
Rep. Rate (Strokes)		f <sub>CLOCK</sub> ÷ 640	1		78	470	Hz
SUPPLY							
Positive Supply Voltage	V <sub>SS</sub>	Range Over Which Functionality Is Guaranteed	1	5	4.5	5.5	V
Negative Supply Voltage	V <sub>DD</sub>		1	-12	-13.2	-10.8	
Positive Supply Current <sup>k</sup>	I <sub>SS</sub>		1	14		25	mA
Negative Supply Current	I <sub>DD</sub>		1	-14	-25		

---

**ELECTRICAL CHARACTERISTICS <sup>a</sup>**

---

**NOTES:**

- a. Refer to PROCESS OPTION FLOWCHART for additional information.
- b. The algebraic convention whereby the most negative value is a minimum and the most positive a maximum, is used in this data sheet.
- c. Guaranteed by design, not subject to production test.
- d. Typical values are for DESIGN AID ONLY, not guaranteed nor subject to production testing.
- e. System parameters not directly tested.
- f. Bit width over which reading is stable 95% of the time.
- g.  $V_{STRG}$  must be more positive than  $-4\text{ V}$ .
- h. Reference source impedance must be less than  $10\text{ k}\Omega$ .
- i. Pin characteristic only during D4 strobe time.
- j. Minimum positive going pulse width to initiate conversion.
- k. All outputs disconnected.