

Scotty relates Tek activity in the Pacific

By JANE MARTIN

- Australia—Assist with many details of setting up new marketing headquarters.
- Singapore—Set up a new distributor.
- Hong Kong—Investigate possibilities of new representative.
- Taiwan—Call on Tek's sales agent.
- Tokyo—Contact distributor; visit competitive scope manufacturer.

This itinerary kept Scotty Pyle (International Marketing) hopping for four weeks in June. With his feet back on Beaverton ground, Scotty's still jumping, but found enough time to tell of the results of his multi-purpose trip:

Tektronix Australia Pty. Limited has officially opened. The first shipment of Beaverton-made oscilloscopes has cleared customs.

Al Hannman, formerly Tek Ltd. staff member, heads the new field facility. Personnel there include: Allan Smyth (Accountant), Jenette O'Shea (secretary), Paul Williams (Field Maintenance En-

gineer) and Lew Kasch (Field Engineer). Paul, who will head the repair center operation, completed his training in Beaverton on July 12 and has reported for work; Lew has transferred from Long Island field office and arrived in Sydney this week.

Located in Sydney, the state capital of New South Wales, the five Tek's join 2 million Australians who live in the largest city of the "land down under." The land of kangaroos, koala bears and duck-billed platypuses boasts 2.99 million square miles—slightly under the US's 3 million, Scotty pointed out.

In a letter to Scotty, Al Hannmann described the first days of Tek Australia: Negotiating for a lease, watching the door for their files, desks and equipment to make their entrance; hoping for a telephone installation and anxious to get started.

"By eleven o'clock June 28 all systems looked GO. Stopping only long enough to buy a pound of coffee and five pounds of sugar, WE WENT! By three the first pot was brewed—Jenny managed to slip out for some sandwiches—and happy as sandboys we were sorting out files—paperwork not seen for ages—and generally getting life organized while munching

on sausages and buns.

"... when we left that night there was a good feeling of accomplishment; the first customer call and two requests for quotations in the mail from the University of New South Wales. Bare cold concrete floors or not—it seemed a good omen for the future prospects."

In Singapore for two days, Scotty called on Mechanical & Combustion Engineering as a preliminary step which could lead to a distributor agreement. While there he visited Singapore university with Mr. Chu of Mechanical & Combustion Engineering. Scotty explained: "By exposing a prospective Tektronix representative to a scope user possessing a high degree of technical know-how (such as in a university) we are able to get a reading on the competence of the firm and their acceptance by a customer. In a strange country it's difficult to measure a firm's capabilities—this is one way to do it."

Next stop: Two days in Hong Kong. Here, Scotty investigated the possibilities of establishing a representative. In Taiwan, he talked with Tek's sales agent, Heighen Scientific Co. Ltd., in Taipei.

Continued on Page 2



JAPANESE VERSION of "Rain-makers" include (l. to r.) Mr. Nagakura, Mr. Kuroha and Mr. Sekido of Midoriya Electric co. shown here with Scotty Pyle (International Marketing) viewing Tokyo from roof of office building just after typhoon-style rains ended.

Rejection recommended on Income Tax referral

Associated Oregon Industries, Oregon Chamber of Commerce, Oregon AFL-CIO and the Oregon Schools Boards association recommend that voters oppose the attempt to refer the recently passed Oregon Income Tax law. If the petition to refer is successful, they recommend votes to prevent repeal of the law at the October 15 election.

Bob Newberry, Tax manager, was recently appointed Chairman of the AOI tax committee which unanimously recommends active opposition to the referral. Don Ellis, Treasurer, recently elected AOI treasurer, remains on its executive committee which deplores the delaying tactics being used to block the referral procedure itself. The committee, while opposing referral, still feels that voters should not be prevented from voicing their opinions.

Bob and Don, in addition to membership on the AOI tax committee, are both members of the Portland Chamber of Commerce tax committee, and Bob replaces Don on the tax policy subcommittee which will study and recommend a balanced tax program for Oregon. The C of C executive committee has approved the unanimous recommendation of its tax committee.

Both organizations feel the tax law falls short of their recommendations as to the healthy way to raise the needed revenue. However, the new law does improve the capital gains treatment and broadens the tax base slightly. It is a short step in the direction

of making Oregon more prosperous.

If the law is repealed, a special session of the legislature will undoubtedly be called. None of the above organizations feels the legislature in a special session is likely to adopt a better tax law. Therefore, all oppose referral.

Stock interest requested

Don Ellis, treasurer, reminds employees who are interested in buying Tektronix shares to notify him as soon as possible on how many dollars they wish to invest. As part of the public offering, Tek will offer a block of shares to employees at the market value less selling commission. Because only a limited block can be made available, it is possible that not everyone will be able to buy as many shares as he wishes, however.

RT STATEMENTS DUE

Statements of employees' Retirement Trust accounts and the 1963 annual report will be mailed to the homes the end of this week or the first part of next week, according to Emerson Hoogstraat, Retirement Trust executive director.



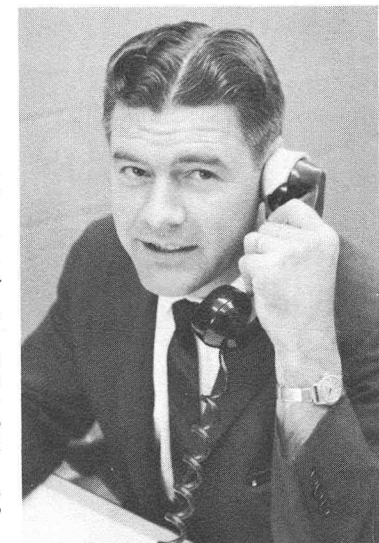
Tektronix, Inc., Beaverton, Ore., Aug. 2, 1963, vol. 4, no. 16

Tony Bryan takes charge of Portland field office

Tony Bryan, former Walnut Creek (California) field engineer, is now in charge of the Portland field office, replacing Sandy Sanford. Sandy transferred to Field Information on July 15.

The Portland field office was established in September 1961. Its territory includes Oregon, parts of eastern Washington, the southern border of Washington and northern Idaho. Tony has been at Tektronix since January 1958. After completing field training he was assigned to the Union (N.J.) field office; in May 1959 he transferred to the Endicott (N.Y.) field

office and in July 1961 to the Lafayette (now Walnut Creek) field office, where he worked until coming back to Beaverton.



Tony Bryan

directs Portland field office

Field personnel transfer

Field engineer Joe Simpson (Pasadena) transferred to the Walnut Creek (Calif.) field office, replacing Tony Bryan, who has taken over the Portland field office.

Christina Matirko (Baltimore, Md. field secretary) transferred to the Union (N.J.) field office.

Field maintenance engineer George Magnett transferred from Washington, D.C. to the Dallas (Texas) field office.

Chemistry teachers tour Tek; express appreciation for visit

The 45 college Chemistry teachers who are attending the National Science Foundation Summer institute at Oregon State university toured Tektronix July 24.

The chemistry teachers represent 22 states, 45 colleges and universities and one each were from Bogata, Columbia and Tehran, Iran.

Arriving at 9:45 a.m. the morning of the tour, the group visited Ceramics, F & M, Plant 3 and CRT. Chuck Lusardi (Electrochem Production Manager) addressed the group before lunch on Tektronix' electrochemical processes. Later in the afternoon Russ Fillingner (Medical Instrument Development) gave a scope demonstration and held a question and answer period.

In a letter to Tom Williams (Plant Supporting Services manager), who conducted the tour, Mr. A. V. Logan, director of the summer institute at Oregon State, expressed his appreciation "for the extremely well-conducted and instructive tour." He added that the participants each felt the tour was "extremely valuable."



CHEMISTRY TEACHERS from OSU's National Science Foundation Summer institute toured Tek last week. Photo shows (l. to r.) Tom Williams (Plant Supporting Services) visiting with Azizeh Mahdavi, a student at Rice university who will teach in Iran next year; Sister LaVonne of Viterbo college, La Crosse, Wisc.; and Janet McAfee of Oakland, Calif., City college.

CU deductions noted

Credit Union deductions will be made on all three paychecks this month—August 2, August 16 and August 30. The extra deduction will make up for the July 3 paycheck when no deduction was made. There will be differences on loan interests because of the longer intervals between postings. For additional information, contact the Credit Union, ext. 7444.

Scotty Pyle returns from busy Pacific tour

Continued from Page 1

Tokyo: Here Scotty contacted Midoriya Electric Co., which has sold Tektronix instruments since 1955. ("Midoriya" means "green store" and years ago probably signified the color of a building—but now, it compares with our use of the term "general" as in General Electric, General Motors, and so on.)

The main purpose of Scotty's visit with the distributor was to discuss various means of creating awareness of the unique features of Tek instruments. At last count there were over 20 oscilloscope-makers in Japan. Tektronix holds only a small percentage of this market. One reason: The Japanese government will not allow imports where local products will do. Many customers are not aware of the unique features built into Tek instruments. By educating customers, they in turn bring the advantages of our equipment to the attention of the government ministry, who would then be more likely to approve the purchase of US-made oscilloscopes.

Although many Japanese customers recognize the superiority of our equipment, like people everywhere, cost is a big factor and local products are improving in quality. Landed price (which includes duty, freight and insurance) is frequently 20 per cent higher than selling prices in the US. "The acceptability of Japa-

nese-made scopes among their customers is increasing each year," Scotty added, "so creating a greater awareness of the technical specifications of Tek instruments among customers by upgrading the technical skills of our distributor is one of our main concerns."

While in Tokyo, Scotty toured the Iwasaki Communications Co. Ltd. to assess both the quality and quantity of the scopes they manufacture, as a means of determining the total Japanese oscilloscope market. "This type of investigation is similar to what Tektronix has done in several countries where customer demand

Roy Fala completes stay in Beaverton

Roy Fala returned to Guernsey Wednesday after spending nine months at Beaverton. From his arrival in October until the first of the year, Roy served as staff field engineer in International Marketing. In January he transferred to Instrument Manufacturing, where he has been studying assembly methods and systems and establishing personal contact with manufacturing personnel. During his stay here he has watched development of instruments that may later be introduced into Guernsey's product line.

Field trainee wives visit Manufacturing

Wives of field trainees toured the manufacturing area last Friday. After the tour they joined their husbands and Field Training department personnel for lunch. Trainees and their wives are: Warren and Shirley Clark, Newton and Nelda Coyle, John and Betty DesJardins, Jim and Jean Fischer, Dick and Patricia Hornicak, Ed and Nadine McMahon, Bob and Mary Alice Muzzy, Don and Doris Seelye.

Hornicaks and Seelyes will be leaving Beaverton shortly for field office assignments. The other trainees reported June 18 for the eight-month field training course.

Jim Morrow announces Plastics reorganization

Jim E. Morrow, Plastics manager, announced the following changes in the Plastics organization, effective July 29:

Plastics Production Engineering has been integrated into other groups within the Plastics department. A new group, Plastics Services, headed by Steve Velcko, includes Packaging Engineering, Packaging Production, Fabrication and laboratory services. Plastics Production group is now called Molding and Processing. George Rayner, formerly Plastics Engineering coordinator, is manager of Plastics Preproduction.

is on the increase," he explained. "Their manufacturing-production area reminded me of Tektronix in 1951," Scotty commented. "However, they use the assembly line approach for production of scopes and also in the test and calibration areas. A portion of the scope is assembled or calibrated and then it's passed on to the next person to assemble or calibrate another section—and so on until it's finished."

"Working conditions are fairly good—with a very high utilization of space—which results in crowding. Two or three times our number of people are in an assembly area similar to ours." In keeping with Japanese custom, Scotty removed his shoes before entering the manufacturing plant and wore soft slippers throughout his tour. Employees wear slippers also, parking their street shoes each morning before work. (Probably they have a problem finding enough parking places for shoes.)

With foreign marketing and manufacturing centers in Guernsey and Heerenveen, and additional offices in Switzerland, Tektronix personnel have been frequent trans-Atlantic travelers during the past few years. It now appears that the Pacific will see more of Tektronix people flying over to our newest outpost, to see if business is going up all over down under.

MISC. FOR SALE

KENMORE MIXER: elec., \$10; Bendix upright auto. washer, \$20; Sunbeam waffle iron, \$15. John Neal, ext. 411.

DUAL PIPES: & chrome extensions, for Corvair, big engine, \$16.50 or best offer. Ext. 274 S.

FRIGIDAIRE RANGE: 36-in., elec. cond., \$55. Bob Field, ext. 675 or MI 4-1974 eves.

REAR HOUSE DOOR: complete w/cas., weather strip., glass, \$15. 292-5514.

SKI BOAT: new deluxe, 13-ft., mahog. deck, transom, dashboards, panel floor., best offer. CH 4-7880.

BOY'S BIKE: 20-in., Schwinn, \$17. Jim, ext. 7371 or MI 4-8136.

MOVIE CAMERA: Canon, 8mm, light meter, 200mm lens, w/Sylvania sun-gun, \$125. MI 4-0744.

SAM'S FOLDER PACK'S: 97, \$100. MI 4-9530.

SCHWINN BIKE: boy's, 26-inch, 2 chrome baskets on rear, excel. cond., \$25. Don, ext. 7398 or MI 4-8936.

BABY STROLLER: gd. cond., 2 yrs. old, \$5. Linda, ext. 7459.

PLYWOOD RUNABOUT: 12-ft., controls, steer, w/shield, gas tank, 10 hp motor, \$250. John Betzer, MI 8-2086.

POWER MOWER: Craftsman, reel-type, fair cond., \$10. CY 2-2595.

WOODEN PLAYPEN: w/mat., \$10; carbed, \$7. MI 8-5864.

HOME FREEZER: chest-type, Coldspot, \$75. Howard Bingham, ext. 7158 or PR 5-8411.

USED TV: mahog. fin., low boy console, 3-speed record player, \$25; 9 1/2 AAA blue shoes, new, \$5. Mollie, ext. 252 S.

HI CHAIR: Peterson folding, chrome, makes into youth chair, gd. cond., \$8. CH 4-9388.

UHF RECEIVER: Hallicrafter Comm. S-36A, \$10; baby crib & matt., gd. cond., \$25. Jerry, MI 4-1532.

HUNTING ARCHERY SET: bow, 70 lb. pull, all access., \$35. Ext. 450 or MI 4-1608.

TOY POODLES: black, must sell, terms. MI 4-5361.

4 BAR STOOLS: \$12. 252-6961.

FORD AXLE: w/3 wheels, 3 600x16 tires, 2 almost new mud grips, \$25. Helen, AL 4-3916.

GOLF CLUBS: bag & cart, 3 wds., 5 irons, \$30. Dave, ext. 7145.

SLIDE PROJECTOR: Bell & Howell, 5 yrs. old, 300 watt, carry. case w/extra tray, \$30. ME 9-3093.

PURE BRED BOXER: 1 1/2 yr. old, male, best offer. Cathy Evers, ext. 270 S, swing or EL 7-7364.

PORTABLE STEREO: tape deck & access., V-M model 714, excel. cond., \$150. Bob Johnson, ext. 236 or MI 8-4206 aft. 6.

CAMPER: Sportsman's special, sleeps 3; water tank, ice box, 2-burner butane stove, \$350. MI 4-8815.

GOLF CART: \$7; nylon golf bag, \$6; Sam Snead 4 wds., \$35; 6 irons, \$36; putter, \$6; pitching wedge, \$7. MI 4-2897.

ARGUS CAMERA: C-44, case & equip., 35mm, excel. cond., \$60 or best offer. MI 6-3654 aft. 4 & wknds.

ROTARY MOWER: 21-in., Garden Mart, 2 1/2 hp, \$20. AL 3-9658.

ZENITH TV: console, \$50; kitch. table & 3 chairs, \$5; bookcase, \$5. Shirley, ext. 7317 or OL 4-0576.

ENLARGER: 2 1/8-in. film, \$15. Dick, ext. 344.

ARGUS MOVIE CAMERA: 8mm, light-bar, screen, projector, \$60. Dole, ext. 7796 or MI 4-9708 aft. 4.

VIDEO ACCORDION: 120 bass, \$150. Hazel, ext. 7581 or MI 4-7911.

'47 NAVION AIRPLANE: A Continental, 205 hp., best offer. Charlie, ext. 265 S.

MAPLE BDRM SET: chest, vanity, dble. bed, springs & matt., \$75. Lora, ext. 371 or MI 4-4313.

MISC. FOR SALE

CAMPING TRAILER: 16-ft., gd. cond., sleeps 5, elec. lights, butane light & stove, sink, ice box, reasonable at \$650. BU 9-4601 aft. 3.

BOYS BIKE: 26-in., 3-speed, A-1 cond., \$12. 2-in. reel mower, needs carb., \$5. 2-cycle Maytag eng., \$5. ME 9-5200.

KORTING TAPE RECORDER: stereo-record, 4-track stereo, all port., built-in amplifier, \$125. John, ext. 7729.

OIL FURNACE: auto., forced air blower, used, gd. for workshop, etc., \$18 or scrap it for parts. Jim, ext. 7741 or MI 4-8136.

WOMEN'S RING SET: 1/2 carat, low mileage, \$150 or best offer. Roger, ext. 7474 or MI 4-8156.

NYLON PLAY PEN: & pad, \$15, elec. heater, \$5. 1795 SE King blvd., Beav.

CUSTOM-BUILT RUNABOUT: 14-ft., Mark 75 ridgeguide steer., ski bar, loaded w/extras, \$825 or camp. trailer. Ruben Rosen, ext. 446 or JE 8-2008.

TAPE RECORDERS: 2, 1 stereo, \$100; 1 stand., \$50. Larry, ext. 7275 or EL 7-9677.

CRAFTSMAN JOINTER: planer, wood lathe, 2 band saws w/benches, \$125 ea. ME 9-4886.

ENCYCLOPEDIAS: new, take over pymts. 284-4889 aft. 5.

PIANO BENCH: new, handcrafted mahog., very sturdy, \$30. ME 9-3951.

GOLD RUG: yr. old, cost \$170, sell for \$80. MI 4-4497 aft. 4.

USED BRICK: approx. 190, 6 cents/ea. Harvey Hansen, ext. 589.

ALL WOOL CARPET: 12x15, w/pad, 1 yr. old, \$100; 10-speed English bike, like new, \$65. 246-4385.

HOUSEHOLD FURNISHINGS: like new, Danish mod., bunk beds, kitch. furn., see to apprec., best offer. MI 4-1914.

LAWN MOWER: gasoline, reel-type, \$30. Irma Kaplick, CH 4-8847.

SEATS: back to back, lay down, use once, \$40 ea. Mike, ext. 7291.

CADILLAC WHEEL: & w/w tire, \$35. Harvey Gjesdal, ext. 7695 or AL 3-9658.

CHILD CARE

BABYSITTING: my home, Farmington & 166, aft. Sept. 1. MI 4-7017.

HILLSBORO AREA: 2 children, 9 mos., start last of Aug., must have own trans. MI 8-5245.

HIGH SCHOOL GIRL: experienced, reliable, days or eves, Concord, Oak Grove area. Jeannie Becker, OL 4-2664.

BABYSITTING: our Christian home, 6 yrs. MI 4-7666.

CHILD CARE: my home, 1-2 children preferred, daytime. 310 SW Allen, apt. No. 3. MI 6-3350.

WANTED

METRONOME: for piano playing. Carl Jonasson, ext. 457.

CHEST OF DRAWERS: & desk; oak table & chairs, preferably round. Jean Seybold, 284-5312 aft. 4.

BUTANE TANK: 1-5 gal., w/o regulator. Ron Clark, ext. 7170.

CANNING JARS: pint & half-pint. Ext. 696 or JE 8-5431.

WINE BARRELS: & pickle crocks. Ext. 696 or 331-2106.

HOUSE TRAILER: 12-14 ft., will trade 54 Buick Spec., 4-dr. htdp. MI 4-3280 eves.

CLUBS: trade for 22 cal. auto., mic. plated, worth \$50. 244-7765.

ENGLISH RACER BIKES: 2, used. Ext. 7471.

CANOE: in ship shape. Bill Strong, ext. 355 S or MI 4-6987.

-BDRM APT: furn. Marge Huffman, ext. 672 swing.

CARS FOR SALE

'55 PACKARD: Custom Clipper, pwr. steer. & brakes, auto., load-leveler suspension, \$400. AL 2-8739 aft. 4.

'60 MGA 1600: lt. blue, wire wheels, r/h, tonneau cover, w/w, like new, \$1395. Bob, ext. 7760 or 232-4358.

'62 VW: 11,000 mi., excel. cond., \$1495 or might consider older sports car as pt. pymt. Dick Jamerson, swing or MI 4-7792.

JEEP: 4-wheel drive, pickup, new tires, 4000 mi. on motor, GMC bed, must sell, \$395. Ext. 7373 or JE 8-4638 aft. 6.

'54 CHEV: r/h, stand. trans., 235 cu. in. eng., recent o'haul, \$200. CY 2-4633.

'55 CHEV: pickup, 3/4 ton, 4-speed, excel. cond., \$900. MI 4-8300.

'53 PONTIAC: 2-dr., sedan, stick shift, gd. cond., gd. tires, \$150. CH 4-4573 bef. 3.

'63 HONDA: 150 cc., 1200 miles, new cond., warranty still gd., \$150. MI 4-2922 aft. 3:30.

'62 MONZA: cpe., 4-speed, 102 hp, white/blue int., tint. glass, r/h, \$1875. Ext. 687 or NE 6-6996.

'52 OLDS: super 88, 4-dr., runs gd., \$85. ME 9-5268.

'47 CHEV: green, panel, runs, best offer. MI 4-4909.

'52 CHEV: 2-dr. w/pwrglide, r/h, gd. tires, \$100. 777-1212.

'59 IMPALA: convert., clean, exc. mech. cond., 4 new tires, seat belts, auto., pwr. steer., \$1450. Betty, ext. 7341 or MI 4-1948 aft. 5.

'62 TRIUMPH: TR-3, Michelin X tires, r/h, tonneau cover, low miles, best offer. MI 6-2462.

'56 CORVETTE: make offer. G. Green, AL 2-4671.

'38 FORD: pickup, 48 Merc. eng., 4-speed, very gd., \$200 or trade. Judy Brown, swing or MI 6-3466.

'54 AUSTIN: 4-dr., 4-speed, flrshift, new eng., clutch & tires, \$200. CH 4-2846 eves.

'61 ALPHA KART: ready to race, \$150. MI 4-2415.

'57 OLDS: 88, 4-dr., st. wagon, pwr. steer. & brakes, new paint, low mileage, make offer. MI 4-8055.

'58 PONTIAC: convert., \$1250 cash, \$300 dn. or older car for equity & \$46 mo. pymts. Verla Argo, swing.

BIDS CLOSE FOR TEK CAR

Bids close today for a Tek company car, 1960 Ford Falcon 4-door sedan, standard transmission, with heater. Minimum acceptable bid is \$850 cash. Send bids to Fred Reeder, delivery station 28-430 or call ext. 472.

FREE

KITTENS: all types, colors, etc. Willie, ext. 7176 or MI 8-3654.

ROCK FOR ROADS: fills, etc., mixed fine to fist-size, you haul. Loyde Osburn, ext. 7241 or JE 8-3923.

MALE PUPPY: pt. cocker, spaniel & Cairn terrier, to nice family w/kind children, he loves em. Judi, ext. 491 or ME 9-5379 aft. 5:30.

KITTENS: 2 calico, 1 black, 1 orange. MI 4-4939.

RIDES WANTED

FROM FOREST GROVE: to Warehouse, 7-3:30 shift. Irene Conrad, ext. 7486.

FROM SE 20 & MADISON: Swing. Betty Fillingier, page 7201.

FROM SE 26 & MAIN: to bldg. 39, 8-3:30 shift. Bob Keen, ext. 7108 or 232-0672.

FROM ST. HELENS: to bldg. 39, 7-3:30 shift. Start Sept. 3. Virginia Brown, page 7201.

ACREAGE

BUILDING SITES: 2 wooded lots, 66x 156 ea., adjacent to SW 60 & Canby, \$1200 ea. or \$2100 both. Ext. 7223 or CH 6-2573.

NEAR BUTTEVILLE: 100 ft. river frontage, level-bldg. site, restricted area, elec., \$70 sq. ft. MI 4-4948 or BU 9-2331.

HOUSES FOR SALE

3-BDRM: panel liv. rm., fp, lge. lot, fruit & shade trees, nr. schools, \$13,950. CH 4-5073.

3-BDRM: Cedar Hills, 1 2/3 baths, kitch. w/nook, cov. patio w/fp, fenced back yd., \$16,500 FHA, \$600 dn. MI 4-6005.

3-BDRM: plus 1 bdrm. apt., 2 fp, wood panel., park-like setting, 2-A, \$26,500. Ray, ext. 295 S or ME 9-3917 aft. 4:30.

4-BDRM: 2 baths, ranch Arch design, 2 blks. to paroch., pub. schools, big, fenced yd., many extras, \$19,900. CH 4-3901.

3-BDRM: birch kitchen, newly decor., patio, fenced yd., \$11,950 by owner. 220 SW 131. MI 4-3622.

MOBILE HOME: '61 Cameo, 2 bdrm., furn., 54x10, see to apprec., \$3800 or make offer. Sandy, ext. 7644 or MI 4-8719.

3-BDRM: lge. util., fenced yd., cov. patio w/fp, \$12,950. 12720 SW Douglas. MI 4-6730.

2-BDRM: FCB, fp, fenced fd., patio, \$14,350. 12440 SW Douglas. MI 4-8038.

3-BDRM: 1 1/2 baths, fp, cov. patio, beaut. l'scaped, native trees, des. district, \$21,750. CY 2-4662.

MOBILE HOME: '60 Fleetwood, 40x8, 1-bdrm., 35x8 awning, \$2500. Ivy, ext. 208 or MI 6-3238.

MOBILE HOME: '61 Lakewood, w/w carpet, must sacrifice, \$200 dn., take over balance, \$3100. Ext. 270 or MI 4-3017.

3-BDRM: proposed, under construction, 1-bdrm. at present, dylt. bsmt., 125x 162 ft. lot, \$5950. 246-6448.

3-BDRM: 2 baths, fam. rm., 2 fp, moving in 3 wks., \$4800 equity for \$2000, \$22,200. MI 4-9466.

MOBILE HOME: 55x10, Flamingo, 2-bdrm., w/d, builtin range & oven, slid. glass drs., awning, excel. cond., \$5495. Ext. 388 S or MI 6-2202.

3-BDRM: trans. forces price dn \$500 for quick sale, \$600 dn. FHA, Furlong Park. MI 4-4327.

3-BDRM: 2 baths, builtin appl., incl. disp., Swedish fp, fenced yd w/trees, Hillsboro, \$15,400 w/\$1200 dn. MI 8-5776.

RIDES AVAILABLE

FROM TIGARD: & vic. to Beav. plants, 7-3:30 shift, riders or carpool. Carolyn Miller, ext. 672 or ME 9-4688.

Magazine features Tek

Clipper Cargo Horizons, Pan American World Airways monthly world trade publication, featured a three-page story about Tektronix in its July 1963 issue. The article details the growth of Tektronix' export trade. It emphasizes the part air cargo plays in customer service and in coordinating operations among our overseas plants.

TEK WEEK

Published every Friday for Tektronix employees by the Communications department, 74/298, extension 405, in cooperation with the Printing and Photography departments.

RENTALS

2-BDRM: mobile home, comp., nice park, 6 mos., avail. Sept. 1, \$60 mo. ME 9-1755.

2-BDRM: new, unfurn., Beav., all elec., carpets, drapes, colored appli., garb. disp., \$110. 420 SE Allen. MI 6-1584.

1-BDRM: duplex nr. Tek & GE, ptly. furn., washing fac., \$70. MI 4-5852.

1-BDRM: SW Beav., liv. & din. rm., gar., oil heat, unfurn., \$60. MI 4-4312.

1-BDRM: apt., w/w carpet., drapes, stove, refrig., d/w, close to Bel Air, \$99.50. Kitty Moore, MI 6-2126.

2-BDRM: delux apt., stove, refrig., wd, w/w carpets, all util. furn. except lights, \$135. CY 2-5908.

1-BDRM: \$50. MI 4-2624.

3-BDRM: avail. Aug. 15, comp. furn., fp, elec. appli., patio, dble. gar., \$125, Cedar Hills. CH 4-1325.

1-BDRM: apt., clean, new appli., heat, water, garb. furn., gar., \$80. Canyon Lane. CY 2-5980 or CY 2-5557.

3-BDRM: all elec., Beav., 1190 SW Erickson, avail. Aug. 15, \$75. MI 4-8420.

2-BDRM: 4-A, N. of Tigard, \$90. ME 9-1305.

1-BDRM: clean, furn. apt., Sylvan dist., country atmosphere, \$55. CA 8-7754.

2-BDRM: triplex, hdwd. flrs., util. rm., priv. patio, builtin range/oven, \$87.50. MI 4-2225 or MI 4-0956.

2-BDRM: penthse., stove & refrig. furn., \$82.50, Sunset apts. MI 6-1377.

1-BDRM: apt., priv. home, ride avail. to Sunset plant, days & swing, \$45 mo. 228-4978.

3-BDRM: nr. Tek, Beav., din., dble. gar., bsmt., oil heat, 1/2-A, reded., \$125 lease. NE 6-6354 eves. or wknds.

5-BDRM: 8 mi. west of Beav., Box 343, Rt. 4, Sherwood, \$75. CH 4-8577.

Job Postings

Tektronix employees should contact Alice Kida, ext. 7620 (8-7620 from Sunset) to apply for positions listed in JOB POSTINGS.

SECRETARY: Woman to work day shift for the Engineering group of the Facilities department of Central Staff Services (J. P. No. 4707).

FUNCTIONS: Provide secretarial services to Facilities Engineering and New Construction department, and to other Facilities managers on request; take minutes of weekly managers' meeting and other meetings as required; maintain engineering and construction files.

QUALIFICATIONS: Secretarial experience, preferably with engineering office; knowledge of construction terms helpful; typing—70 wpm, shorthand—100 wpm desirable.

ISSUING CLERK: Man to work day shift for the Stock/Warehouse of Material Management (J. P. No. 5654).

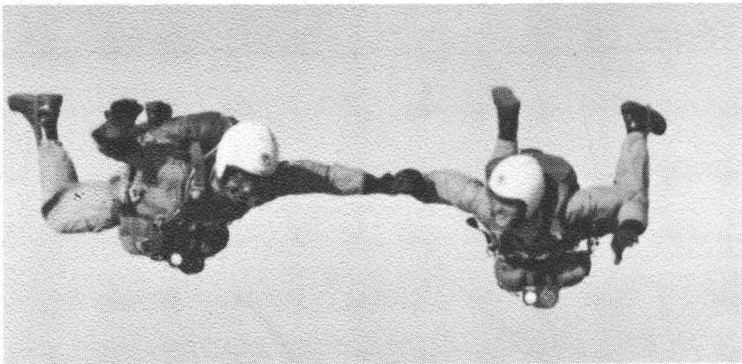
FUNCTIONS: Fill requisitions and allotment requests for stock; perform necessary clerical work and assist in other warehouse functions.

QUALIFICATIONS: Stock or warehouse experience helpful; clerical aptitude; physical stamina — must be able to stand most of the time.

STAFF NURSE: Woman to work on nurses' staff of Personnel Services group of Personnel (J. P. 3514).

FUNCTIONS: Provide professional nursing care for all employees; maintain medical records and compile medical reports; work on formal and informal health education and safety program; maintain liaison between ill or injured employee and supervisor; handle matters concerning insurance claims and reports; order necessary medical supplies.

QUALIFICATIONS: Registered nurse; preference given to applicants with doctor's office, small clinic or industrial nursing experience.



MEMBERS of the Portland Parachute Club were shot at 5000 feet by Jay Quimby (Finals Plant 1) who was floating around about 25 feet away with a wide-angle lens. Jay has been active in the club for four years.

Tek employee enjoys skydiving; participates in parachute club

Jay Quimby (Finals, Plant 1) took the above picture while engaged in his favorite pastime, which seems to be drifting aimlessly through the clouds at 5000 feet, looking for someone to float by that looks familiar. This probably seems strange, but Jay has joined several hundred people who like to skydive.

A member of the Portland Parachute club for the past four years, Jay has held the offices of treasurer, president, chairman and training officer and has completed more than 240 jumps. Of his most important awards are: First place overall at the Washington meet; Second overall at the Seattle Seafair Open; First place in Style Event in the Canadian Open and third place Senior Division, Oregon Championships.

Membership in the club now totals about 63. Requirements for

Golfers hold match

Tek's golfers will hold a trophy match with the US National Bank tomorrow at the Eastmoreland golf course in SE Portland. On Sunday, August 18, the annual Tek Open will be held at the Colwood golf course.

Thank You

Thank you for the beautiful flowers I received while I was in the hospital recently. **Bessie McClelland** (Ceramics).

Thanks to all my friends at Tektronix for the beautiful flowers and cards I received at the death of my father. **Don Wilson** and family (Ceramics).

We want to thank all our friends for the messages of sympathy and flowers received at the death of our beloved Mother and Grandmother. **Hertha Hickman** (Accessories), **Marlena Hickman** (Assembly, Plant 1), **Rudy Meyer** (Shop).

I wish to thank everyone for the nice cards, flowers and the plant from CRT which were sent to me during my recent stay in the hospital. **Scoop Ingalls** (CRT Gun Assembly).

I would like to express my appreciation to my thoughtful friends for their visits and remembrances while I was in the hospital and home convalescing. Thank you all. **Merribell Hoffman** (Assembly Plant 3).

membership are physical fitness, cool nerve and understanding. Candidates for the club are selected carefully and trained intensively. Instruction and equipment are available at the club. For more information, interested persons may contact Jay at ext. 7695.

letters to the editor....

To the Editor:

Slight error in Friday's *Tekweek* (7-26-63): only four games played at Sunset that week—one at Ridgeway Grade School and one at West Tualatin View Grade School. Ours (Plant II—Mavericks) was played at West Tualatin View, which is situated on the side of a hill with the playing field as a sort of plateau. This causes all three outfield limits to be rather short, which, in turn causes a set of ground rules to be observed. Any ball hit fairly on the fly over the drop-off in any field is a ground rule home-run and any ball which bounces over or rolls over, untouched by an outfielder, is a ground rule double.

In comparison, the Sunset High School field has four or five hundred yards of unobstructed grass in all outfields; and in order to make a home run at that field, a batter has to (1)

New Tek buildings going 'on schedule'

A report from Carl Jonasson, Facilities Engineering manager, indicates that construction of the Electrochemical building is progressing approximately on schedule. Work completion percentages through today are: Brickwork and masonry—95%, Electrical—65%, Mechanical—70%, Plumbing—80%, Air Conditioning—50%.

The Chemical Storage building, adjacent to Electrochem, should be completed during August, according to Ray Cone, Facilities Design group manager. Masonry is completed and roofing is underway.

TEKEM meeting halts tied-up softball game

TEKTRONIX SOFTBALL LEAGUE

Sixth Week Standings

| | W | L | Pct. | GB |
|--------------------|---|---|-------|-----|
| Moonliters (Pl. 2) | 6 | 0 | 1.000 | ... |
| Warehouse | 4 | 1 | .800 | 1½ |
| Plastics | 3 | 2 | .600 | 2½ |
| Mavericks (C/S) | 3 | 2 | .600 | 2½ |
| Sys. & Plan. | 3 | 3 | .500 | 3 |
| Electrochem | 2 | 4 | .333 | 3½ |
| Photography | 1 | 4 | .200 | 4½ |
| Haskell's | 0 | 6 | .000 | 6 |

LAST WEEK'S RESULTS

Moonliters 19, Electrochem 4
Photography 15, Haskell's 10
Warehouse 7, Mavericks 7*
Systems 30, Plastics 11
*to be replayed later

Even the Tektronix softball circuit felt the effects of last week's TEKEM stockholders' meeting. A few minutes before the stockholders gathered at Beaverton high's gymnasium, a couple of softball teams were trying to overcome a 7 to 7 deadlock on the Sunset high diamond. Unfortunately, neither team could do it,

and the C/S Mavericks and Warehouse will battle again at a later date.

In other contests last week, Plant II's Moonliters continued their winning ways by thumping Electrochem, 19 to 4. It ended a two-game winning streak for the boys from Sunset and increased the Moonliters' league lead to 1½ games. The Plant II lineup has been rugged on defense as well as offense, with none of the opposition scoring more than four runs in any game.

Photography managed its first win of the season by edging the hard-luck Haskell's Rascals, 15 to 10, thus giving the Rascals full possession of the circuit's cellar spot. In the final contest of the week, Systems and Planning made it an even win-loss record to date by melting Plastics, 20 to 11 (not a football score, either!).

Next week's action (August 5-8) finds the Plant II Moonliters taking on Systems & Planning on Monday, Haskell's Rascals vs. C/S Mavericks on Tuesday, Electrochem vs. Plastics on Wednesday and Warehouse vs. Photography on Thursday. For more softball news, see today's letter to the editor.

Bridge tourney planned

The Tek Bridge club will sponsor a bridge tournament Friday, August 16, at Aloha Odd Fellows hall. Play begins at 7:30 p.m. The club promises prizes, refreshments and stimulating competition; admission is \$2.50 per couple. Employees are urged to register early with Boyd Lewis, ext. 391.

Ed Davis
C/S Parts Publications



TREES on Tektronix' Industrial Park were repaired last week by Stevens Tree Surgeons of Portland. Most of the work was to correct damage caused by October storm, according to Don Postlewaite (Grounds Maintenance Manager) who directed the operation.

Statistics

MARRIED:

Kay Smith (MMQA) and Dean Meeuwesen, July 27.
Chuck Simonson (Assembly, Plant 1) and Pat Dinger, July 19.
Lynne Meyers (Manuals) and Ray Robbins, July 19.
Gordon L. Young (Q.C., Plant 2) and Nancy A. Petterson (Test Final staff, Plant 2), July 3.

BORN:

To Ken and Edith Gross (Plastics Processing), a son, Gregory Kenneth, 8 lbs. 15 oz., July 19.
To Paul and Olga Williams (FME, Tek Australia), a son Ross David, July 24.
To Dennis and Carroll Van Buren (CRT Finishing), a son, Kenneth De..., 8 lbs. 6½ oz., July 11.

ADOPTED:

By Jerry and Darlene McCabe (Assembly, Plant 3), a daughter, Erin Patrice, born June 16.
By Mike and Barbara Gailey (Ceramics) a son, Stuart Dean, born June 28.