

KEX Snow Announcement

In case of heavy snow this winter, announcements will be broadcast over radio station KEX to let employees know whether Tektronix will or will not work.

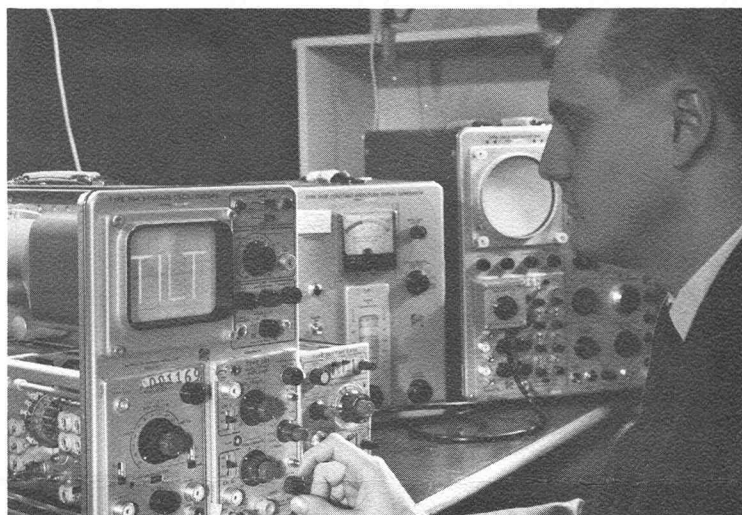
Morning announcements will be made between 5:30 and 6 a.m. and on the 6:30 a.m. news. Between 2:30 and 3 p.m. an announcement will be made for the swing shift. An evening announcement between 10 and 10:30 p.m. will indicate whether Tektronix will work the following day.

The announcements will be broadcast only when snowfall is heavy enough to cause doubt about working. No announcement means Tektronix will work as usual.

Refer to Scope Scoop No. 204, November 30, 1962, for additional snowfall information.

Tekweek

Tektronix, Inc., Beaverton, Oregon
Vol. 3, No. 41 January 11, 1963



WOULD IT SELL? Field Engineering trainees in the Field Training department wrote "TILT" on the phosphor of a Type 564 Storage Oscilloscope, then wrote it with the position controls. Field Training manager Rollie Smith shows how it's done.

Ken Mathis Appointed Administration Manager

Ken Mathis, who has been IMSE Production Research manager, was named Monday as Administration manager for Instrument Manufacturing, succeeding Otto Zach, who is now IM Administrative Support manager.

Ken reports to Instrument Manufacturing Manager Ken Spooner. His new phone is 7768, his delivery station 47/292.

He will represent the division in all administration functions, including personnel.

Ball Tickets Available

Tickets for the annual Portland Symphony Ball, "Manhattan West," February 2, can be purchased from Joanne Edstrom (Plant Supporting Services), ext. 7152.

FEs Complete Training

The following Field Engineering candidates completed their training in Portland and left for field office destinations last Friday:

Dean Hill (Chicago), Donald Louthan (West Los Angeles) and George Magnett (Washington, D.C.).

Symposium Calls for Papers

The 4th International Electronic Circuit Packaging Symposium, to be held August 14-16 in Boulder, Colorado, has called for papers for presentation at that time.

Deadline for submission of papers is January 19.

Engineers in any phase of electrical or electronic circuit packaging who wish to submit a paper, may obtain additional information by calling Tekweek, ext. 405.

Tek's \$3343.03 Gift Matched By Foundation

Tek employees donated \$3,443.03 to the Washington County Retarded Children's Home through Christmas fund-raising projects throughout the company. This amount was matched by the Tek Foundation, bringing the total to \$7886.06.

In a letter to Tek employees, Barbara Kauer, president of the Washington County Association for Retarded Children wrote:

"Congratulations, Tektronix employees, on your superb fund-raising drives in behalf of the retarded children of Washington County. Your efforts are sincerely appreciated by the parents, the association and the Beaverton Kiwanis, currently involved in a united effort to build a center in Aloha . . .

"Your most recent donation will make it possible to complete construction in the very near future. The balance will be used as operating expenses as budgeted, providing well over half of the anticipated income for 1963 . . . Again, we would like to extend our warmest thanks on behalf of our retarded children."

Seventeen Tek groups contributed to the home this year.

Group Representative Minutes Error Noted

An error in last week's group representative minutes incorrectly implied Bill Webber's and Tektronix' criticism of Nationwide Mutual Insurance company.

The lengthy statement (at the bottom of page three of the minutes) immediately following what appeared to be the employee's question, was actually part of the question, and not the answer.

For correction: The entire paragraph beginning "Did or does Tektronix endorse . . ." is the employee question. The next paragraph, beginning "Tektronix does not . . ." is Bill's answer.

Hatfield Names Howard Graduate Center Trustee

President Howard Vollum was appointed by Governor Hatfield to a 15-member board of trustees for the proposed graduate study and research center in Portland.

The July 1962 Advisory committee report to Governor Hatfield explains the objectives of the center: To enlarge the opportunities for graduate education for men and women of high promise in the city, in Oregon and in the Pacific Northwest, and to expand the opportunities for advanced research at levels of excellence which will contribute to the advancement of knowledge and understanding.

Tax Manager Says Medical Insurance Premiums Could Be Deductible

Bob Newberry, Tektronix Tax manager, points out that the cost of an employee's health and accident insurance constitutes a medical expense for income tax purposes.

Because Tektronix pays the cost of the employee's coverage, only an employee who has elected to have his spouse and/or his children covered incurs medical expense through payroll deduction at Tektronix. Disability and life insurance cost do not constitute medical expense.

The following schedules show the cost you have incurred per pay period if you elected coverage for your spouse and/or children:

A. January 1-April 30, 1962:

Coverage	1 month	4 months
Spouse only	\$4.75	\$19.00
Spouse & children	\$7.50	\$30.00
Child or children	\$3.35	\$13.40

B. May 1-end of year (18 periods), with major medical coverage:

Coverage	1 pay period	18 pay periods
Spouse only	\$2.78	\$50.04
Spouse & children	\$4.27	\$76.86
Child or children	\$1.91	\$34.38

The figures shown in the "Your Insurance Program" section of the Employee's Handbook concerning the amount paid for health and accident coverage of dependents include life insurance costs for dependents which are not medical expenses for income tax purposes.

Also, persons who prepaid their insurance before going on leave in 1962, have incurred medical premium expenses according to a different schedule. Additional information can be supplied by Edith Stevens (Personnel Services), ext. 259.

Income tax limitations on medical expense . . .

The law provides that medical expense is deductible only when it exceeds 3 per cent of your adjusted gross income. Medicine and drugs are included in medical expense only to the extent that they exceed 1 per cent of your adjusted gross income.

For example, if your adjusted gross income (line 9 of Form 1040-1962) is \$5,100, and

Medicine and drug expenses	\$215
Deduct 1 per cent of adj. gross income	(51)
Adjusted medicine & drug expense would be	\$164
And other medical expense (doctor & hosp.) is	276
Total medical expense would be	\$440
Deduct 3 per cent of adj. gross income	(153)
Deductible medical expense would be:	\$287

There are other limitations on medical expenses; these put a ceiling on the maximum amount deductible: \$5,000 per exemption with a total of \$10,000 per single return, or \$20,000 per joint return of the head of a household.

Additional deductions are allowed for taxpayers over 65 and disabled.

Departmental News

Job Postings

Tektronix employees should contact Alice Kida, ext. 7620 (8-7620 from Sunset), to apply for positions listed in JOB POSTINGS.

Plant 2, James's Gang

Nellie Shipley baked a "good luck" cake for Doris Cushman, who terminated after four years at Tek.

Capacitors

We welcome Louis Lofland to our group; he's from Plant 1 Finals.

Eunice Gardner and Esther Miner treated us to cake on their second Tek anniversaries. Emma Raymond (Diodes) and Bertha Howcraft were honored on their birthdays. Ross Kines (Resistors) served cake to honor all December birthday celebrants.

Dave Benham (Capacitors Engineering) is back with his group after completing a Tek electronics training course. Margaret Pearson is now with Oscar Olson's group in Capacitors Engineering.

Accessories, Days

Barbara Burke treated the department on her sixth Tek anniversary, December 10.

The Accessories department received a civic service citation from the Beaverton Kiwanis club for our donation of \$566.84 to the Washco School for Retarded Children. We thank everyone who made the project possible.

The department enjoyed chocolate eclairs sent by Dale's Catering Service. We purchased our Thanksgiving turkey from them.

Plant 3, Jerry's Mixwells

Our group congratulates Donna Brunswick upon her engagement to Ron Wetzler of Plant 3 Finals. She received her ring as a Christmas gift.

Accessories, Swing

Over the holidays Darlene Bergeron accepted an engagement ring from Gordon Coulter (Plant 1 Test). No date has been set for their wedding.

Marge Kuehn's husband is recuperating nicely, although his surgery is not yet complete. (He was one of the men injured in the Hillsboro water tank cave-in.)

Cosette Robarts is at home after a wrist operation.

We were deeply grieved to hear that Virginia Jungwirth's father passed away December 31. Our sympathy goes out to her.

Plant 3, Jim's Gems

We served cake on Saturday for Reva Malloy who terminated.

Plant 1, Dale Stuck's Group

Joan Clark, Echo Larson and Darla Dixon are back from loan to Pilot Production.

Loretta Plieth became engaged to John Lokanen December 21.

December birthdays were celebrated by Dale Stuck, Gladys Brunken, Virginia Bolopue, Geoa Becker, Edith Burrell, Loretta Plieth and Alice Teufel.

Plant 1, Rickman's Relics

Our group celebrated the New Year with Hawaiian punch and snacks during coffee break.

Plant 1, Scope Test

Group elections were held January 4. Wes Kosta (group representative) and Tom Bull (alternate) were re-elected.

Elaine Carothers is new social chairman; Ed Cole is reporter.

Plant 2, Mechanical & Wire Prep

A smorg was held last week to honor Bud Ramsdell who went on swing shift and for Larry Sutton who is our new supervisor.

Plant 2, McDowell's Lads & Lassies

We all had a gay time at a group Christmas party, December 22, at Alice Ploghoff's home.

Eva Gardner and her husband celebrated their 38th wedding anniversary Christmas Eve.

Charlene Kilgore celebrated an important day—her 21st birthday.

Plant 1, John Stevens's Group

Olive Mead is helping out in Ceramics department. Rose Wilkes and Wanda Weisenbach are working in Plant 2 Shortline.

Cathy Johnson missed holiday festivities in our group when she was hospitalized for observation.

Our group raised \$26.95 for the Retarded Children's School in Aloha.

The Solderettes, Swing 2

Goldie McIntyre became the grandmother of a 7 lb., 1 oz. girl.

Plant 2, Rams' Lambs

Support group elected its new officers: Joan Saunders, group representative; Susan Loader, alternate; Judy Henningsen, social chairman and Martha Whitmore, reporter.

We served cookies to outgoing officers Florence Dye, Peggy Wallsrum, Dora Jensen and Karen Smith. Laura Cappa took a maternity leave.

Plastics Processing & Molding

Jud Brummond's son, Cary, recovered from his car accident injuries and returned to school.

We're all one big happy family since Plastics Molding moved into the area vacated by Accessories. Now we have more noise and more fun.

Food Service

Elsie Heem's son, Dave Rohrer, a senior at Linfield college this year, received the Arnold Huntley memorial award as Linfield's most inspirational football player this season. Dave was also an unanimous choice as safety man on the 1962 Northwest conference all-star football team, repeating the honor he earned last year.

Food Service gave \$50, matched by Tek Foundation, to Washco School for Retarded Children.

Plant 3, Marshall Jackson's Group

Nellie Burdeny is back after a couple months' sick leave.

Our new group officers are: Mary Adolphson, group representative; Verian Henderson, alternate; Margaret Stark, social chairman; Nellie Burdeny, assistant and Mickey Ruecker, Tekweek reporter.

Plant 1, Mechanical & Kit Prep

Don Boone, utility man from Mechanical, went on swing shift; Chuck Simonson took his place.

MESSENGER: Woman to work day shift for the Messenger Service group of Plant Supporting Services department of Central Staff Services (J.P. no. 400). **FUNCTIONS:** Pick up and deliver interplant mail on an hourly schedule; post bulletin boards; operate duplicating machines; type.

QUALIFICATIONS: Average typing skill; good memory; clerical experience helpful but not necessary; must enjoy walking and working with people.

MEASUREMENT STANDARDS TECHNICIAN: Man to work day shift for the Measurement Standards Lab of the Measurement Standards and Product Reliability department of Domestic Operations Quality Assurance (J.P. no. 1043).

FUNCTIONS: Calibrate and intercompare Domestic Operations reference standards; maintain laboratory equipment used in transferring reference standards to secondary standards; calibrate standards equipment and instruments used as secondary standards; prepare calibration records on laboratory and secondary standards; draw schematics and construct special measurement devices.

QUALIFICATIONS: Electronic aptitude and experience including: two years of college engineering science or equivalent, calibration experience on Tektronix equipment, knowledge of measurement techniques; mechanical aptitude; ability to make algebraic computations; memory for numbers.

STOCK CONTROL CLERK: Woman to work day shift for the Stock group of the Planning department of Plant 2, Instrument Manufacturing (J.P. no. 766).

FUNCTIONS: Prepare kits; pull kits of priority order as requested by stock clerk leadman; build mechanical assemblies for samples provided.

QUALIFICATIONS: Previous experience in stock helpful but not required; memory for part numbers; finger dexterity; assembly speed; ability to do detailed work; color vision; good physical condition—must be on feet for periods.

CLERK-TYPIST: Man or woman to work day shift for the Stock-Warehouse of Materials Management (J.P. no. 1487).

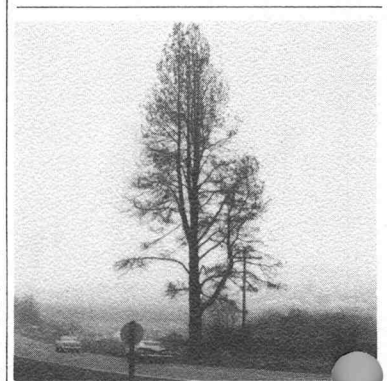
FUNCTIONS: Process packing slips; perform general office duties: typing, filing, record keeping.

QUALIFICATIONS: ability to file accurately; numerical aptitude.

STORES OPERATOR: Man to work day shift for the Material Stores and Services group of the Material Control department of Materials Management (J.P. no. 5016).

FUNCTIONS: Fill requisitions and allotment requests; receive material into stores, stock and maintain material on shelves; determine various department needs; perform necessary clerical work; maintain proper inventory balance.

QUALIFICATIONS: Stock or warehouse experience helpful; some accounting helpful, but not necessary; good physical stamina required—must be on feet most of time.



KARL BRAUN DRIVE will close temporarily after 8:30 a.m. Saturday while Facilities men fell the large pine north of the railroad and remove debris. Firewood is free for the sawing and hauling.

Basketball

On January 4, with four weeks of the nine-week basketball season completed, league standings were:

Team	Won	Lost
Plant 3	4	0
Personnel	3	1
Transformers	3	1
Warehouse	3	1
Plant 4	2	2
Shop	2	2
Sunset	1	3
Plant 2	1	3
Plant 1	1	3
Research	0	4

Results of January 2 and 3 games were:

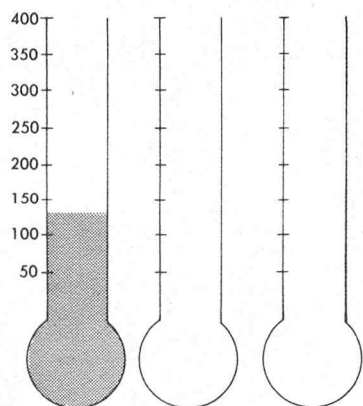
Warehouse—55, Plant 4—33
Transformers—2, Shop—0 (forfeit)
Plant 3—49, Plant 1—31
Personnel—47, Research—35
Sunset—50, Plant 2—44

BLOOD DRAWING

1963 Goal: 1200 pints

Collected January 4: 132 pints

Collected to date: 132 pints



Corpuscle Kids Group I Hemo Goblins Group II Plasmatics Group III
Goal 400 pints Goal 400 pints Goal 400 pints

Next Blood Drawing: March 1 Group II, Hemo Goblins

Bowling

The annual Tektronix bowling tournament is scheduled for the weekends of February 17 and February 24, at Valley Lanes. Herb Webb (IMSE), Tek Bowling club vice-president, announced the price will be \$3.75 for each event (singles, doubles and team), and the tournament will be open to all Tek bowlers, league or otherwise, and their spouses.

February 4 will be the last day to register; entry blanks and prize fund information will be available soon.

Herb also said there will be no Tek-Sawyers tournament this year.

January 1-4 league bowling honors were earned by:

Scopettes: Wilma Stapleton (Plant 1 Assembly) 494; Marcelle Buel (Capacitors Component Engineering) 207.

Tek Late Winter Mixed: Bob Tracy (Plant 3 Test manager) 552; Dennis Angell (Plant 3 Finals) 218. Joyce Bredemeyer (Plant 1 Assembly) 172, 446.

Tek Women's: Jean Mackaben (Plant 3 Assembly) 174, 471.

Tek Men's: Lee Miller (Shop Paint) 572; Roger Tippet (Plant 2 Test) 237. Bowlers who picked up difficult splits and earned diamond drawings were: Marlin Marsh (Electrochemical), 4-6-10; Wally Densmore (Export Shipping), 6-7-10; and Herb England (IMSE), 6-7-

Tekweek

TEK WEEK is published every Friday for Tektronix employees by the Communications department in cooperation with the Printing and Photography departments. Carol Day, editor-writer; Donn Beck, staff-writer; Jane Martin, staff-writer; Graphic Arts group, layout and paste-up. Del. station 74-298; extension 405.

MISC. FOR SALE

WAGON WHEELS: 2, large, \$4 each. 331-2457.

NYLON TUBELESS SUBURBANITES: two 7.50 x 14, Montgomery, nearly new, \$10 each. MI 4-2629.

SHRIMP HEAD POLE: 8½-ft. Shakespeare, \$3. Nov. '56 - Oct. '62 Popular Electronics magazines, make offer. Al Meyers, ext. 582 or MI 4-9798.

WHITEFACE STEER: grainfed, will deliver to slaughterhouse, ½ or whole, 45 cents a lb. dressed. KE 9-8485 after 4.

BOY'S TOPCOAT: size 16. charcoal tweed, new cond., \$15. Betty, ext. 7492 or MI 8-3718.

AKC PEKE: blond w/black mask, especially good w/children, must be gd. home, make offer. Carolee, ext. 204.

CARTOP CARRIER: w/canvas cover, \$10; Cosco playpen, \$8; misc. test equip., priced reasonably. MI 6-1287.

MAN'S SKI EQUIPMENT: 7-ft. Kneissls, size 10 boots, ski pants & parka, gd. cond., \$55. Tom, ext. 7145 or 285-7245.

CAMPER: fits '59-63 Ford, styleside 8-ft. bed, ½-ton pickup, \$250. Larry Siler, ext. 366 or CY 2-2031.

STEREO TAPE RECORDER: playback, turntable, 2 speakers, all-portable, \$210. 244-3626.

TOWER SLIDE PROJECTOR: new, automatic, 7 magazines, \$60. Phil Muller, ext. 462.

ELECTRIC HANDSAW: 6½-in, nearly new, \$20. MI 4-6321.

STEEL KITCHEN CABINET: white, single sink, double drain top, complete w/fixtures, make offer. JE 8-4010.

QUARTERHORSE: brown and white, \$200; padded saddle, like new, \$125. ME 9-1921 after 5 or on weekends.

MAGNUS CHORD ORGAN: \$50. MI 8-4519.

WESTERN-STYLE REVOLVER: 22 cal., double action, 9 shot, w/belt holster, \$75. Ray Dye, ext. 447.

PORTABLE ELECTRIC HEATER: 3000 watt, 220 V, \$22. AT 2-5364.

OIL HEATER: 3 or 4 rm., \$25; kitch. trash burner, \$15. EL 7-3610.

FRONTALINA ACCORDION: 120 bass, gd. cond., \$150. Sandra Paterson, ext. 7697.

WASHER: \$75; small refrig. & elec. range, gd. cond., will deliver, \$75. Merv, ext. 285 S or OL 4-6161.

DINETTE SET: virtue, bronze tone, 5-piece, like new, \$45. CH 6-3137.

HOUSES FOR SALE

1-BDRM: 4 acres, w/unfinished addition containing fam. rm., ½ bath, possible 3-bdrm., \$14,500. MI 6-2292 or CY 2-3402.

3-BDRM: ranch, 2 baths, fp, lge. patio, gd. storage in dble. gar., utility, take over 4½% GI loan, \$14,500. MI 4-7749.

3-BDRM: fam. rm., fp, patio, \$13,500, way below FHA, \$450 down, allowance for redecor. MI 4-5958.

4-BDRM: architect's home, close in, \$21,500, will sell or trade for similar property. CH 4-3901.

3-BDRM: attach. gar., cov. patio, will decorate to suit buyer, \$10,250. Cal, ext. 603 or MI 4-4989.

3-BDRM: 1 2/3 baths, fp, attached dble. gar., patio, \$14,500, \$450 down, trade or lease option. Buz, ext. 310 S or MI 8-3314.

MOBILE HOME: '57 Nashua, 8 x 45, excel. cond., \$2,090. MU 7-3558.

MOBILE HOME: '60 Spacemaster, front kitch., provincial interior, 50 x 10, 2-bdrm., \$4,800. Jo Peters, ext. 7232.

2-BDRM: 6 yrs. old on 5 acres, schools, 10 miles to Tek, \$15,000. KE 9-8554 after 4.

3-BDRM: 2-bath, lge. fam. & din. rm., fp., builtins, garb. disp., dble. gar., \$17,900, Cedar Hills. 12840 S. W. Bowmont.

3-BDRM: 2-bath, fp, dble. gar., ex. lge. patio, fenced-in yard, 4½% GI loan, \$15,000. S.E. Beaverton. Ext. 7234, 7685 or MI 4-6467.

MISC. FOR SALE

CAMERA & LENS: Cannon 35 mm rangefinder with f/1.5, 50 mm & telephoto 135 mm f/4 lens. \$160 or best offer. Patsy, ext. 661.

TWIN BEDS: springs, mattress, \$5; desk, \$5; end tables, \$1 ea. MI 4-5426.

RCBS RELOADING PRESS: Model A-2, with 9 mm Luger dies, 38 cal. bullet swaging die, \$75. Stan, ext. 259 S or CY 2-3809.

SPINET PIANO: w/bench, Wurlitzer limed oak, excel. cond., \$450. Ext. 607 or CY 2-3875 after 6.

CALIFORNIA BUCK: white, 9 months old, \$2.50. MI 4-6792.

CAR TOP BOX: home-made, 15 x 48 x 60 in., includes rack for any car, \$25. Hank, ext. 575 or MI 4-9749.

TWO OUTPUT TUBES: KT66, brand new, \$5.98 pr. John Winkelman, ext. 302.

LEROY ADJUSTABLE SCRIBER: and lettering template, make offer. Madeline, ext. 7583.

POLAROID CAMERA: model 80 w/flash, trade for heavy-duty saber saw, or sell, \$35. Elmer, ext. 7641 or MI 4-5801.

BOY'S BIKE: 24-in., \$10. Marvin Hatfield, EL 7-9615.

ACETYLENE OUTFIT: complete w/2 tanks, \$70; 5-3 amp battery charger, \$4. Lee, ext. 655 or MI 4-2597.

GO-KART: brand new, \$430 retail, will sell for \$350 or best offer, Art Ford, 288-1056 after 6.

STICK-SHIFT SETUP: for 272, 292 or 312 Ford, \$100. MI 6-2381.

SKIS: & safe bindings, \$10; boots, size 7, \$7.50. Dean, ext. 325 or MI 4-9896.

NEW TUBES: 4-65's, 813's, 4x-150A's, also LM-10 frequency generator, 125 kc to 20 megacycles, make offer. Richard Wood, MI 4-8792.

FORD REAR END: '55 or '56, gd. cond., \$20. Joe, ext. 7292 or AL 2-7096.

GARDEN CULTIVATOR: dismantled, 2-wheel, w/6½ hp Toro eng., & implements, \$35. Alice, ext. 672, swing.

WALNUT TABLE: 6 chairs & buffet, \$70; new 39-inch bed, \$65; chrome table set, \$35. 235-7207 after 5:30.

TWIN-CHANNEL AMPLIFIER: Eico, channelmaster turntable, three 8-inch speakers, excel. cond., \$100. Ext. 7315 or MI 6-2724.

DINETTE SET: chrome & formica, table w/four chairs, beige, \$25. Linda Kay Lewis, ext. 672 swing.

Trading Post

RENTALS

ROOM: w/bath, woman, \$35. Mrs. Ramsey, MI 4-5210.

2-BDRM: unfurn. triplex, enclosed gar., water & garb. pd., no pets, \$70 w/child, \$65 w/o child, 2820 S. W. 178th, Aloha. MI 4-1507.

2-BDRM: duplex, new, 11635 S. W. Bowmont, \$125. MI 4-3977 or CA 7-4912.

2-BDRM: in Beav., duplex, builtins, birch kitch., patio, \$95. CH 4-1369.

2-BDRM: \$75 including water. MI 4-3298.

ROOM & BOARD: laundry, gd. food, pleasant home, \$20 week. 232-5789.

4-BDRM: near West Union, lge. yard, fp, attached gar., ptly. furn., \$97.50. MI 4-3953 weekends.

3-BDRM: lease or sale, oil furnace, bsmnt., walk to Beav., avail. now, \$85. MI 4-3174.

3-BDRM: gar., ptly. furn., Aloha area, \$85. MI 4-6525.

2 ROOMS: separate, furn., w/kitch. priv., in Cedar Hills, make offer. MI 4-0320.

2-BDRM: duplex, Hillsboro, unfurn., \$85. Betty, ext. 386 or MI 4-1604.

2-BDRM: duplex, unfurn., range, oil heater, wash. fac., w/d hook-up, gar., on bus line, no pets, \$55. MI 4-6284.

1-BDRM: Sunset apts., range & refrig., unfurn., off-street parking, \$59.50. S.W. Murray & Cornell rd. CA 8-6459.

3-BDRM: small, clean, 1-acre, up to 2 children, elec. heat, range, close to Tek, \$80. 244-7328.

ROOM: nice, in private home, for employed man, Lake Grove, \$35 month. NE 6-1352.

LOST

BOOKS: "Advances in Electronics & Electron Physics," vol. 7; "Machinery's Handbook," number 8129 (on flyleaf). Terry, ext. 388.

CARDIGAN SWEATER: navy blue, Braemer, in IO bldg. June, ext. 7759.

WANTED

CAR RADIO: for '51 Merc. Peggy Wallstrom, page swing or 234-2621 days.

COLEMAN LANTERN: single mantle, reasonable. Frank, ext. 366 S.

FOUR WHEELS: 15-in. Jean, MI 8-5386.

RELIABLE BABYSITTER: in our home in Aloha area, swing shift, 3:30 to 12:30, call between 10 a.m. & 3:30 p.m. Lola, MI 6-1444.

POTTER'S WHEEL: new or used. Nancy, ext. 7410 or MI 4-6201.

BABY CRIB: 1-2 yr. old. MI 6-2089.

ROOMMATE: girl to share my apt. in S. E. Portland. Diana, 775-7329 after 6.

PLAYPEN: in gd. cond. Dick Jones, ext. 7474 or MI 8-5245.

CAR-TOP CARRIER: used, two-bar. Rudy Preiskorn, MI 4-0821.

OPEN LAND: to rent for production of grass hay; prefer not less than 5 acres. MI 4-7146.

FREE

AKC REGISTERED COCKER: home needed for Hula Lady 5, part. color, not spayed, farm home preferred. NE 6-2356 after 5.

CUTE KITTENS: one-half Siamese. Ella Beaver, ext. 7698.

Deadline: ads must be received at the Tek-week office by Friday noon to appear in the following issue; send to delivery station 74-298 or phone extension 405; 1 ad per person per issue; 15-word limit does not include name and phone number.

RIDES WANTED

FROM S.E. 86TH & FLAVEL: to bldg. 19, 7 to 3:30 shift. June, ext. 7423 or PR 5-6165.

FROM S.W. WATSON: Beaverton to bldg. 74, Mon.-Wed.-Fri. morn., 8:30. Marlene Garvey, ext. 331.

FROM 39TH & POWELL: to Sunset, 7 to 3:30. Judy, ext. 300 S or 235-7239.

FROM 7TH & BASELINE: Hillsboro to RT bldg., 7 to 3:30. Juanita Ashford, ext. 447, or MI 8-4649.

CHILD CARE

BABYSITTING: in my home, over 1 yr. old. MI 6-2350.

CHRISTIAN HOME: 2 yrs. & up, in Beav., close to Tek. MI 4-7666.

CHILD CARE: 1 or 2 children, infant or preschooler, in our home, 7655 S. W. 87th. 246-5755.

MOTHER: hourly. MI 4-0803.

RELIABLE MOTHER: weekdays & Sat. in own home, near Bel Aire shopping center. MI 4-5061.

CARS FOR SALE

'55 CHEVROLET: V-8 pwr. pack 2-dr. htdp., perfect white paint, turquoise interior, rebuilt eng., beautiful cond., \$900. Jim, ext. 376 or PR 7-1671.

'48 INTERNATIONAL PICKUP: best offer. MI 8-5176.

'59 GMC PICKUP: 6-cyl., 3-speed, easy load bumper, sportliner camper, \$1100 or best offer. BU 5-6953.

'60 MERCURY MONTEREY: 4-dr. htdp., radio, pwr. steering, only 18,000 miles, like new, \$1680. MI 4-6058.

'56 CHEVROLET: convert., auto., r/h, pwr. brakes & steering, \$400. 775-4614.

'58 ENGLISH FORD: excel. shape, save on gas, \$350. Ralph Seeberger, ext. 447 or KE 9-8025.

'50 CHEVROLET PICKUP: \$375. EL 7-6766.

'55 FORD: V-8, stick, o/d, clean, \$395 or best offer. Clair, ext. 7795 swing or 246-6115 days.

'53 PONTIAC: 2-dr., sedan, \$125. Ralph MI 4-0014.

'60 FORD WAGON: 4-dr., 6-cyl., \$1395; '58 Volvo, 2-dr. sedan, \$795. MI 4-3326.

'56 DODGE: auto. trans., r/h, \$250 or trade for what-have-you. MI 4-8725.

'54 HENRY J: best offer. Floyd Parks, MI 4-7490.

'56 GMC PICKUP: 4-wheel drive, gd. cond., 180 hp., make offer. CY 2-1928 evenings.

'47 MERCURY: coupe, 2 new tires, gd. body, minor repairs, \$125. MI 4-6903 or 1865 S. E. Alice lane.

'62 CHRYSLER NEWPORT: r/h, pwr. steering, \$2625 or highest cash offer. Roy, PR 5-7100.

'59 BSA SPITFIRE: motorcycle, \$595. Doug Pegar, ext. 7474 or OL 6-5900.

'60 AUSTIN 850: Mini-Minor, gd. running cond., autocross winner, \$495. PR 4-7491 after 6.

'60 FORD PICKUP: V-8, ½-ton, c. cab, gem top, hd. 3-speed, tinted glass, r/h, pos. traction overloads, \$1450. ME 9-2362.

'60 FORD PICKUP: V-8, ½-ton, 4-speed trans., positraction, overload springs, r/h, excel. cond., low mileage, \$1500. MI 4-1295 after 6.

Calendar

Gun club rifle match—2:00 Sunday at Hind's warehouse. 22 prone position match, cost: 50 cents per match. Rifles and ammunition available at range; merchandise prizes. NRA small-bore rifle rules apply.

Rock club—7:30 Tuesday at OMSI. **Baseball club—4:00 Wednesday** in Building 70 (Warehouse) lunch room. Organizational meeting and election of 1963 officers.

Bridge club—7:30 Wednesday in Building 45 cafeteria.

Basketball league—3 games Wednesday at Jesuit high school: 6:30, Personnel-Transformers; 7:45, Research-Plant 3; 9:00, Shop-Warehouse. 2 games Thursday at Jesuit high school: 8:00, Plant 4-Plant 2; 9:15, Sunset-Plant 1.

Credit Union annual meeting—2:00 Sunday, January 20 in Building 45 cafeteria. Elections for board of directors and credit committee positions.

Bridge tournament—January 25, 7:30 at St. Bartholomew's Episcopal church. Play in Open and Class B; merchandise prizes.

Would the group that assisted the Guerra family, 1316 S.W. 69 ave., during December (Christmas project), please contact Tekweek, ext. 405?

GREENSBORO, N. C. . . . In Tobacco Land



Rick Ennis **Mary Divers**
Field Engineer Field Secretary



Bill Roberts
Field Maintenance Engineer



Margie Schenk **Bert Saunders**
Field Secretary Field Engineer

The city of Greensboro is located in the northern Piedmont section of North Carolina, and is the second largest city in the state. One of the leading distributing centers of the south, it has a population of 1,360,000 within a 50-mile radius of the city.

Some of the 250 manufacturing firms in Greensboro are world leaders in their products: Cone Mills (textiles), Blue Bell (apparel), Burlington (textiles), Western Electric Co. (electronics), P. Lorillard (cigarettes) and Richardson Merrell (Vicks products).

Teks in Greensboro say the educational picture there is excellent. A complete education — from grammar school through college — may be obtained through attend-

ing one of the city's 44 schools. The Woman's College of the University of North Carolina is the largest resident girls' school in the US and A&T college is the nation's second largest Negro college.

North Carolina, in the past, has been known as a farming state, but that picture is slowly changing since the state government is actively securing varied types of industry for the state. The electronics industry has climbed from a practically non-existent field ten years ago to the fifth largest industry there.

Up until August 1962 all dependents of Tek Greensboro personnel were girls. Rick has three, Bert one, Mary one and

Margie two. The situation was upset when Bill joined the staff; he has two girls and a BOY!

All five Teks at Greensboro utilize their leisure time with sports and hobbies. Bert Saunders is an outdoorsman; he likes golf and hunting. He once brought a 175-pound 6-point deer home.

Bill Roberts is a frustrated bowling enthusiast. He says his average is 140, but goes on to add that most of the time he has seen higher basketball scores.

Rick Ennis has carpenter's blood in his veins. In 1961 he added a complete new room to his home, doing all the work—from bricklaying and roofing to paneling and flooring.

Mary Divers had a music career in mind once; she majored in music at Woman's College of the University of N.C. She also did radio and concert work. But the demanding musical career was abandoned and she now spends most of her time at Tek and with her family.

Margie Schenk almost had herself a sideline business in ceramics. She attended ceramics classes and became so good at the hobby that she sold several articles. Her specialty: Ceramic Santa Claus and Christmas tree.

Greensboro FEs cover miles of

territory. Western Electric Co., manufacturers of the Nike family of missiles, has seven major locations ranging from manufacturing areas to company-sponsored engineering schools.

General Electric Co. now maintains seven manufacturing plants located in Lynchburg and Salem, Va., Hendersonville, Charlotte and Hickory, N.C., and Irmo, S.C. GE's interests in those areas are communications products — two-way radios and microwave systems, heavy industrial control, outdoor lighting, X-ray and component parts.

Other customers help Tek Greensboro round out its wide variety of applications. Those customers deal in such areas as rocket propulsion and testing, electronic components, heavy research in chemistry, textiles mathematics, physics and engineering, 24 TV stations and the military—Charleston naval shipyard, six Air Force bases, various AC&W squadrons, Camp LeJeune and Cherry Point Marine bases.

There are three major medical customer locations: Bowman Gray School of Medicine in Winston-Salem, N.C.; University of North Carolina Medical School in Chapel Hill, N.C.; and Duke University Medical Center in Durham, N.C.

Tek scopes are being used for customers' automated equipment in the manufacture of Ballistics, electric blankets, fiberglass and textile machinery. Greensboro serves such well-known tobacco producers as Liggett & Myers Tobacco Co., P. Lorillard, R. J. Reynolds and American Tobacco Co. With Tektronix scopes in their chemical research they continually find better ways to produce more and better tobacco products.

Greensboro even has customers using scopes for the study of the boll weevil (for extermination purposes) and for the study of the behavior of sheep during pregnancy. Their motto: A SCOPE ON EVERY FARM.

Teks in the News

Don Kepler (Personnel Services manager) was named 1963 chairman of Portland Chamber of Commerce Personnel Management committee. Don is also 1963 chairman of the Scientific Advisory committee of Oregon Selective Service system.

January 7 "Newsweek," in an article about the new 'image' of pool halls, featured the wife of **Jerry McCabe** (Plant 3 Cables & Wire Prep, West manager). **Darlene**, who worked in Plant 1 Unit Wiring until last February, is a billiards instructor at Beaverton's Cue and Cushion.

Jack Day (Central Staff Services) was appointed chairman of the 1963 Gearhart Better Business Relations conference committee.

June Hemenway (Warehouse Prepack) is the grandmother of the first 1963 baby born in Hillsboro's Area II.

Robert W. (Bob) Scott began work Monday as Overseas Support group manager in the International Marketing department. Bob transferred from Customer Service Inventory Control. His extension is 7494.

Dick Millington (F&M QA) interviewed Commodore Gaston

DeGroot, commander of the USS Savannah, as part of Portland Jaycee program, "Think Oregon." The interview will be broadcast Sunday at 10:15 a.m. on KGW-TV, Channel 8.

Bill Bessey (Education & Training) will be one of a three-man panel discussing "Vocational rehabilitation — is it worthwhile?" 1 p.m., January 20, on KGW-TV. Bill is a member of the general advisory committee of the state vocation and rehabilitation agency.

Seattle District Formed

Don Clifford, ex-district manager at Albuquerque, moved to Seattle to head the new Seattle district office—Portland and Seattle were recently named as a district.

Bill Carter left the West Los Angeles field office and is now district manager at Albuquerque. That district includes Denver, Phoenix and Albuquerque offices.

Both Seattle and Albuquerque district offices belong to the Western region, managed by Ed Bauder.

Greensboro Field Office: 1838 Banking st., Greensboro, N.C.

