


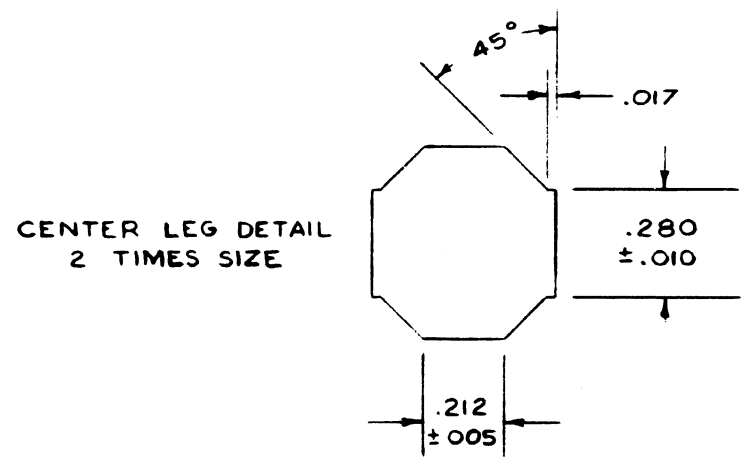
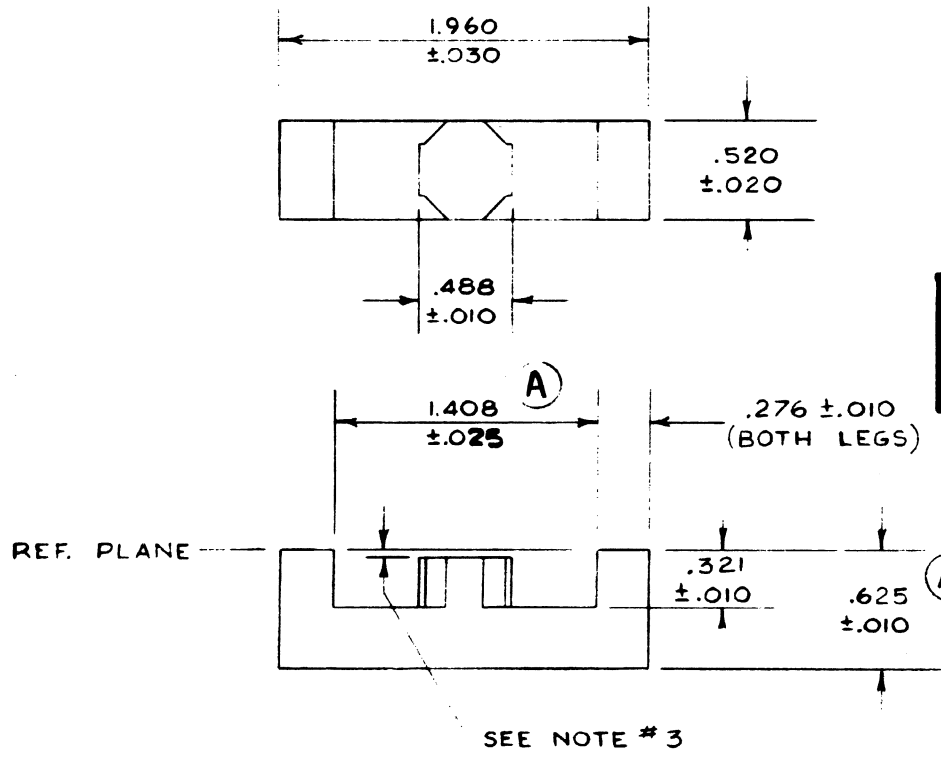
DWG NO. A-7222		PART NO. 276-0545-00		REV C	
REV.	BY	REFER.	DESCRIPTION OF CHANGE	CH. BY	DATE
	RF OK	S7364	INITIATED PART		8-20-63
(A)	RF OK		225 WAS 210 & UPDATE NOTE 3		18 NOV 63
(B)	BW		ALL PN CHANGED FROM 6 TO 9 DIGITS, XXX-0XXX-00 ("X" INDICATES OLD NO).		6-17-68
(C)	BW		ADDS PISL		SRK 4 JUN 80

TEKTRONIX, INC. SAFETY CONTROLLED PART.
 THE DRAWING TYPE DESIGNATION AND APPROVED SOURCES OF SUPPLY FOR THIS ITEM ARE LISTED ON THE PURCHASED ITEM SOURCE LIST (PISL) FOR THIS PART NUMBER.

4. PURCHASED PART
- (A) 3. CENTER LEG TO BE GROUND TO 0.015 ± 0.003 AS MEASURED FROM REFERENCE PLANE.
2. EXCLUDING MATING SURFACES ALL RADII AND FILLETS 0.012 MAX. UNLESS OTHERWISE NOTED.
1. WITHIN SURFACE LIMITS, MATING SURFACES SHALL NOT DEVIATE MORE THAN $+0.001/-0.000$ AS MEASURED FROM REFERENCE PLANE. SEE NOTE THREE FOR EXCEPTION.

NOTES:

TEKTRONIX, INC.  PORTLAND, OREGON, U.S.A.	TITLE CORE, E, FERRITE			
	MATERIAL PER SPEC			
FINISH				
SCALE NONE	BLANK SIZE		TYPE GEN.	
TOLERANCE ANGLES $\pm 2^\circ$ FRACTIONAL $\pm 1/64$ UNLESS OTHERWISE SPECIFIED	DATE 7-18-63	ENGR. GS	DR. BY BB	CH. BY WCR/YNF
PART NO. 276-0545-00		REV C	DWG. NO. A-7222	



DO NOT SCALE DRAWING